



SUPERIOR COURT
State of Delaware

2012 Annual Report Statistical Information

SUPERIOR COURT

Caseload Comparison - Fiscal Years 2011-2012 - Civil Case Filings				
	2011	2012	Change	% Change
New Castle County	10,313	8,988	-1325	-12.8%
Kent County	2,129	1,612	-517	-24.3%
Sussex County	2,643	1,830	-813	-30.8%
State	15,085	12,430	-2655	-17.6%

Caseload Comparison - Fiscal Years 2011-2012 - Civil Case Dispositions				
	2011	2012	Change	% Change
New Castle County	10,488	10,263	-225	-2.1%
Kent County	2,352	2,075	-277	-11.8%
Sussex County	2,761	2,084	-677	-24.5%
State	15,601	14,422	-1179	-7.6%

Source: Prothonotary's Offices, Superior Court; Administrative Office of the Courts

SUPERIOR COURT**Caseload Breakdowns Fiscal Year 2012 - Civil Case Filings**

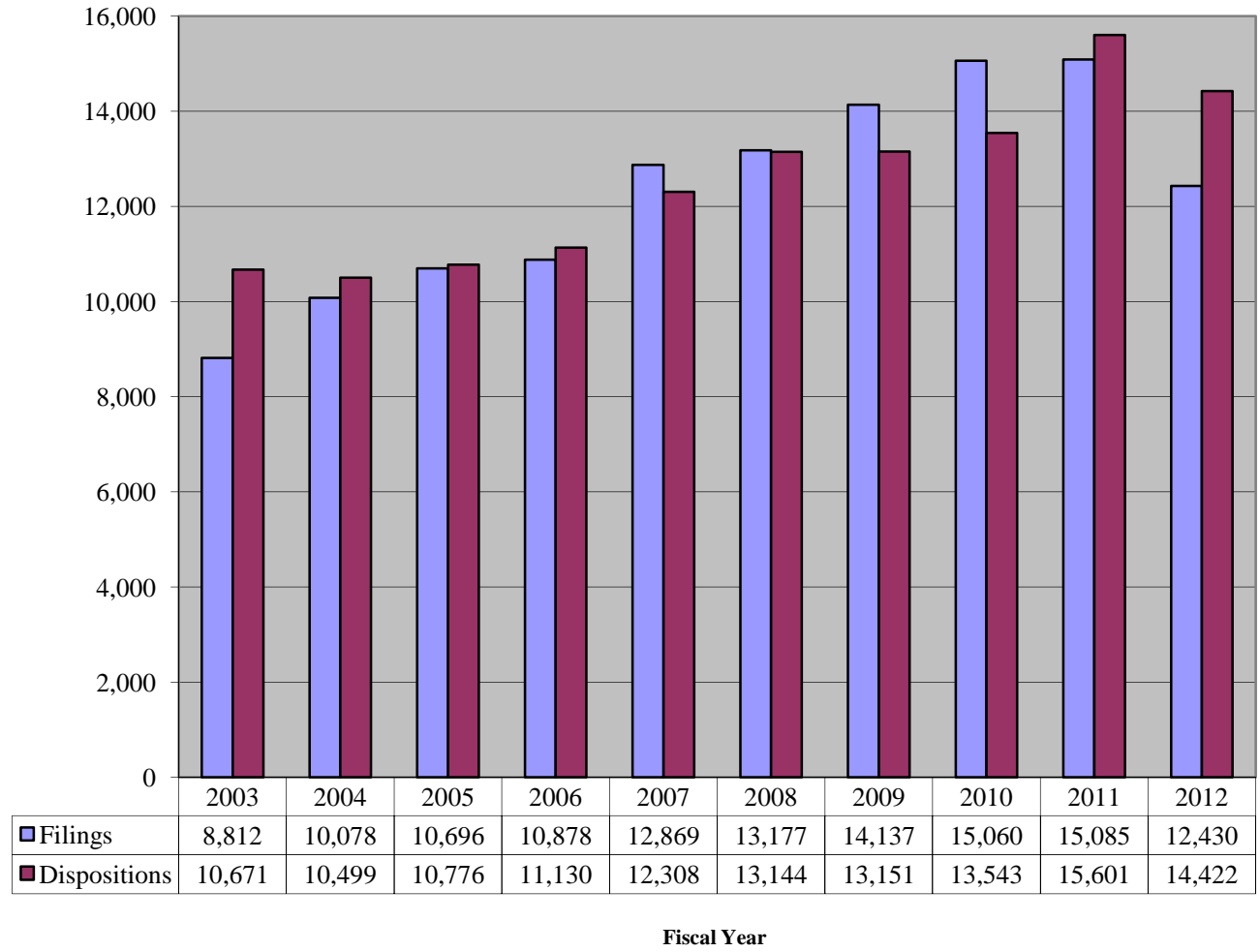
	Mechanic's Liens				Involuntary				Total		
	Complaints		and Mortgages		Appeals		Commitments			Miscellaneous	
New Castle County	3,309	36.8%	1,961	21.8%	161	1.8%	1,259	14.0%	2,298	25.6%	8,988
Kent County	511	31.7%	630	39.1%	60	3.7%	66	4.1%	345	21.4%	1,612
Sussex County	431	23.6%	769	42.0%	60	3.3%	16	0.9%	554	30.3%	1,830
State	4,251	34.2%	3,360	27.0%	281	2.3%	1,341	10.8%	3,197	25.7%	12,430

Caseload Breakdowns Fiscal Year 2012 - Civil Case Dispositions

	Mechanic's Liens				Involuntary				Total		
	Complaints		and Mortgages		Appeals		Commitments			Miscellaneous	
New Castle County	3,990	38.9%	2,559	24.9%	209	2.0%	1,160	11.3%	2,345	22.8%	10,263
Kent County	593	28.6%	1,014	48.9%	74	3.6%	74	3.6%	320	15.4%	2,075
Sussex County	453	21.7%	962	46.2%	84	4.0%	22	1.1%	563	27.0%	2,084
State	5,036	34.9%	4,535	31.4%	367	2.5%	1,256	8.7%	3,228	22.4%	14,422

Source: Prothonotary's Offices, Superior Court; Administrative Office of the Courts

Superior Court Civil 10 Year Caseload Trend



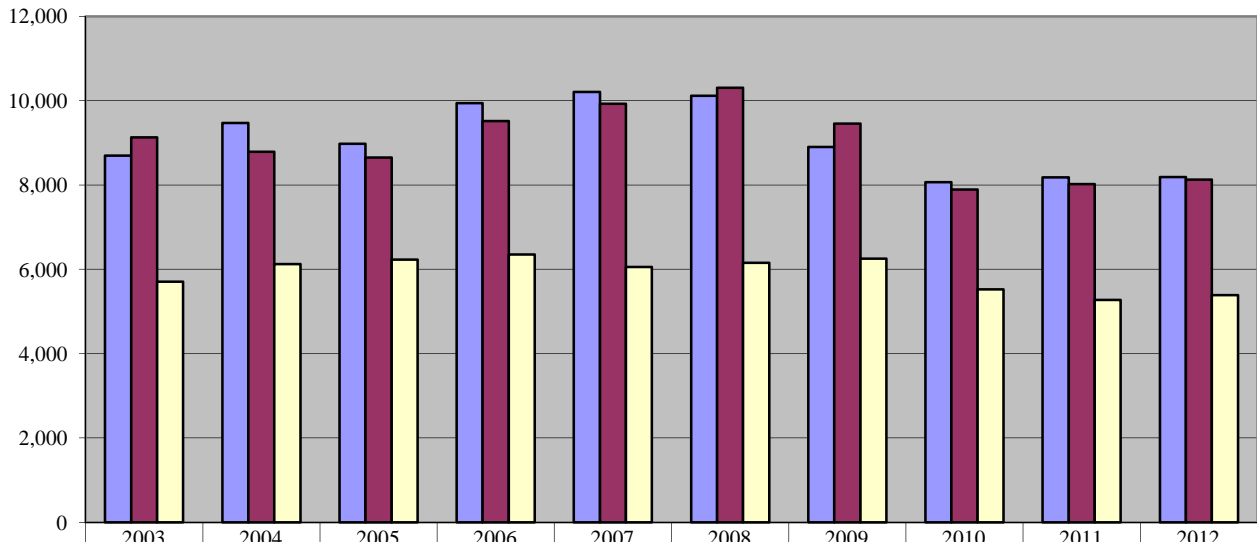
SUPERIOR COURT

Caseload Comparison - Fiscal Years 2011-2012 - Criminal Case Filings				
	2011	2012	Change	% Change
New Castle County	4,244	4,242	-2	0.0%
Kent County	1,811	1,683	-128	-7.1%
Sussex County	2,125	2,261	136	6.4%
State	8,180	8,186	6	0.1%

Caseload Comparison - Fiscal Years 2011-2012 - Criminal Case Dispositions				
	2011	2012	Change	% Change
New Castle County	4,142	4,217	75	1.8%
Kent County	1,858	1,769	-89	-4.8%
Sussex County	2,016	2,137	121	6.0%
State	8,016	8,123	107	1.3%

Source: Court Administrator and Case Scheduling Office, Superior Court; Administrative Office of the Courts

Superior Court Criminal 10-Year Caseload Trend



	2003	2004	2005	2006	2007	2008	2009	2010	2011	2012
Filings	8,697	9,469	8,973	9,936	10,206	10,115	8,898	8,064	8,180	8,186
Dispositions	9,131	8,789	8,651	9,512	9,923	10,306	9,451	7,892	8,016	8,123
VOP Filings	5,706	6,119	6,232	6,349	6,055	6,151	6,255	5,523	5,271	5,384

Fiscal Year

SUPERIOR COURT

Caseload Breakdowns - Fiscal Year 2012 - Criminal Filings									
	Indictment		Rule 9 Warrant		Information		Other*		Total
New Castle County	3,031	71.5%	122	2.9%	1,072	25.3%	17	0.4%	4,242
Kent County	1,360	80.8%	19	1.1%	294	17.5%	10	0.6%	1,683
Sussex County	769	34.0%	178	7.9%	1,314	58.1%	0	0.0%	2,261
State	5,160	63.0%	319	3.9%	2,680	32.7%	27	0.3%	8,186

Caseload Breakdowns - Fiscal Year 2012 - Criminal Dispositions									
	Trial		Guilty Plea**		Nolle Prosequi		Remand/Transfer		
New Castle County	103	2.4%	2,911	69.0%	665	15.8%	1		0.0%
Kent County	33	1.9%	1,148	64.9%	342	19.3%	1		0.1%
Sussex County	18	0.8%	1,655	77.4%	247	11.6%	3		0.1%
State	154	1.9%	5,714	70.4%	1,254	15.4%	5		0.1%

Caseload Breakdowns - Fiscal Year 2012 - Criminal Dispositions (cont.)									
	Dismissal		FOP/Drug Court		Consolidation		Total		
New Castle County	61	1.4%	312	7.4%	164	3.9%			4,217
Kent County	45	2.5%	123	7.0%	76	4.3%			1,768
Sussex County	3	0.1%	32	1.5%	179	8.4%			2,137
State	109	1.3%	467	5.7%	419	5.2%			8,122

* Includes appeals, transfers, reinstatements and severances.

** Includes Probation Before Judgment

FOP = First Offender Program

Source: Court Administrator and Case Scheduling Office, Superior Court; Administrative Office of the Courts

SUPERIOR COURT

Types of Dispositions Fiscal Year 2012 - Criminal Trials - Part One							
	Jury Trial		Non-Jury Trial		Total		
New Castle County	117	89.3%	14	10.7%	131	100.0%	
Kent County	28	84.8%	5	15.2%	33	100.0%	
Sussex County	18	100.0%	0	0.0%	18	100.0%	
State	163	89.6%	19	10.4%	182	100.0%	

	Guilty		Not Guilty*		No Final Disposition**		Total	
New Castle County	69	52.7%	34	26.0%	28	21.4%	131	100.0%
Kent County	17	51.5%	10	30.3%	6	18.2%	33	100.0%
Sussex County	14	77.8%	1	5.6%	3	16.7%	18	100.0%
State	100	54.9%	45	24.7%	37	20.3%	182	100.0%

Types of Dispositions Fiscal Year 2012 - Criminal Trials - Part Two								
Jury Trial								
	Guilty	Guilty LIO	Not Guilty	Pled Guilty At Trial	Nol Pros/ Dismissed at Trial	Mistrial	Hung Jury	Total
New Castle County	50	6	28	4	4	8	17	117
Kent County	11	1	4	2	4	4	2	28
Sussex County	14	0	1	0	0	1	2	18
State	75	7	33	6	8	13	21	163

Non-Jury Trial							
	Guilty	Guilty LIO	Not Guilty	Pled Guilty	Nol Pros/ Dismissed at Trial	Mistrial	Total***
New Castle County	7	1	2	1	0	0	11
Kent County	3	0	2	0	0	0	5
Sussex County	0	0	0	0	0	0	0
State	10	1	4	1	0	0	16

All Trials								
	Guilty	Guilty LIO	Not Guilty	Pled Guilty at Trial	Nol Pros/ Dismissed at Trial	Mistrial	Hung Jury	Total***
New Castle County	57	7	30	5	4	8	17	128
Kent County	14	1	6	2	4	4	2	33
Sussex County	14	0	1	0	0	1	2	18
State	85	8	37	7	8	13	21	179

Types of Dispositions Fiscal Year 2012 - Criminal Nolle Prosequis						
	Nolle Prosequis By Special Condition		Nolle Prosequis By Merit		Total	
New Castle County	265	39.8%	400	60.2%	665	100.0%
Kent County	194	56.7%	148	43.3%	342	100.0%
Sussex County	24	9.7%	223	90.3%	247	100.0%
State	483	38.5%	771	61.5%	1,254	100.0%

* Includes Acquittals, Dismissals at Trial and Nolle Prosequis at Trial

** Hung Juries, Mistrials, and Reserved Decisions

*** Does not include Reserved Decisions

LIO = Lesser Included Offense

Nol Pros = Nolle Prosequi

Source: Court Administrator and Case Scheduling Office, Superior Court; Administrative Office of the Courts

SUPERIOR COURT

Types of Dispositions Fiscal Year 2012 - Criminal Felony Guilty Pleas						
	Pled Guilty Original		Pled Guilty Lesser		Total	
New Castle County	1,690	88.7%	215	11.3%	1,905	100.0%
Kent County	604	83.9%	116	16.1%	720	100.0%
Sussex County	985	90.0%	110	10.0%	1,095	100.0%
State	3,279	88.1%	441	11.9%	3,720	100.0%

Types of Dispositions Fiscal Year 2012 - Criminal Misdemeanor Guilty Pleas						
	Pled Guilty Original		Pled Guilty Lesser*		Total	
New Castle County	614	61.0%	392	39.0%	1,006	100.0%
Kent County	216	50.5%	212	49.5%	428	100.0%
Sussex County	341	63.7%	194	36.3%	535	100.0%
State	1,171	59.5%	798	40.5%	1,969	100.0%

Types of Dispositions Fiscal Year 2012 - Criminal Total Guilty Pleas						
	Pled Guilty Original		Pled Guilty Lesser*		Total	
New Castle County	2,304	79.1%	607	20.9%	2,911	100.0%
Kent County	820	71.4%	328	28.6%	1,148	100.0%
Sussex County	1,326	81.3%	304	18.7%	1,630	100.0%
State	4,450	78.2%	1,239	21.8%	5,689	100.0%

* Includes Probation Before Judgment

Source: Court Administrator and Case Scheduling Office, Superior Court; Administrative Office of the Courts

SUPERIOR COURT

Performance Summary Fiscal Year 2012 - Criminal Cases - Elapsed Time			
	Total Number of Cases Disposed	Average Time from Arrest to Disposition	Average Time from Indictment to Disposition
New Castle County	4,217	120.9 days	79.7 days
Kent County	1,769	123.7 days	66.2 days
Sussex County	2,137	46.3 days	15.8 days
State	8,123	97.0 days	53.9 days

Performance Summary Fiscal Year 2012 - Criminal Cases - Compliance With Speedy Trial Standards							
	Total Number of Cases Disposed	Disposed of within 120 Days of Indictment (90%)		Disposed of within 180 Days of Indictment (98%)		Disposed of within 365 Days of Indictment (100%)	
New Castle County	4,217	3,119	74.0%	3,947	93.6%	4,175	99.0%
Kent County	1,769	1,455	82.2%	1,610	91.0%	1,597	90.3%
Sussex County	2,137	1,784	83.5%	2,044	95.6%	2,136	100.0%
State	8,123	6,358	78.3%	7,601	93.6%	7,908	97.4%

Criminal Cases Performance Explanatory Notes

1. The performance summary charts measure the average time from the date of arrest to the date of disposition as well as the average time from the date of indictment/information to the date of disposition.
2. In measuring the elapsed time for defendants for the purpose of determining the rate of compliance with the speedy trial standards, the following are excluded by the Court:
 - a. For all capiases, the time between the date that the capias is issued and the date that it is executed.
 - b. For all Rule 9 summonses and Rule 9 warrants, the time between the arrest and the indictment/information, if any.
 - c. For all nolle prosequis, the time between the scheduled trial date and the actual filing date of the nolle prosequis.
 - d. For all mental examinations, the time between the date that the examination is ordered and the date of the receipt of the results.
 - e. For all defendants deemed to be incompetent, the period in which the defendant is considered incompetent.

Source: Court Administrator and Case Scheduling Offices, Superior Court; Administrative Office of the Courts

SUPERIOR COURT

Performance Comparison - Fiscal Years 2011-2012 - Criminal Cases				
Average Time From Arrest to Disposition				
	2011	2012	Change	% Change
New Castle County	123.0 days	120.9 days	-2.1 days	-1.7%
Kent County	123.0 days	123.7 days	0.7 days	0.6%
Sussex County	138.1 days	46.3 days	-91.8 days	-66.5%
State	128.0 days	97.0 days	-31.0 days	-24.2%

Performance Comparison - Fiscal Years 2011-2012 - Criminal Cases				
Average Time From Indictment to Disposition				
	2011	2012	Change	% Change
New Castle County	87.7 days	79.7 days	-8.0 days	-9.1%
Kent County	70.4 days	66.2 days	-4.2 days	-6.0%
Sussex County	98.1 days	15.8 days	-82.3 days	-83.9%
State	85.4 days	53.9 days	-31.5 days	-36.9%

Source: Court Administrator and Case Scheduling Offices, Superior Court; Administrative Office of the Courts

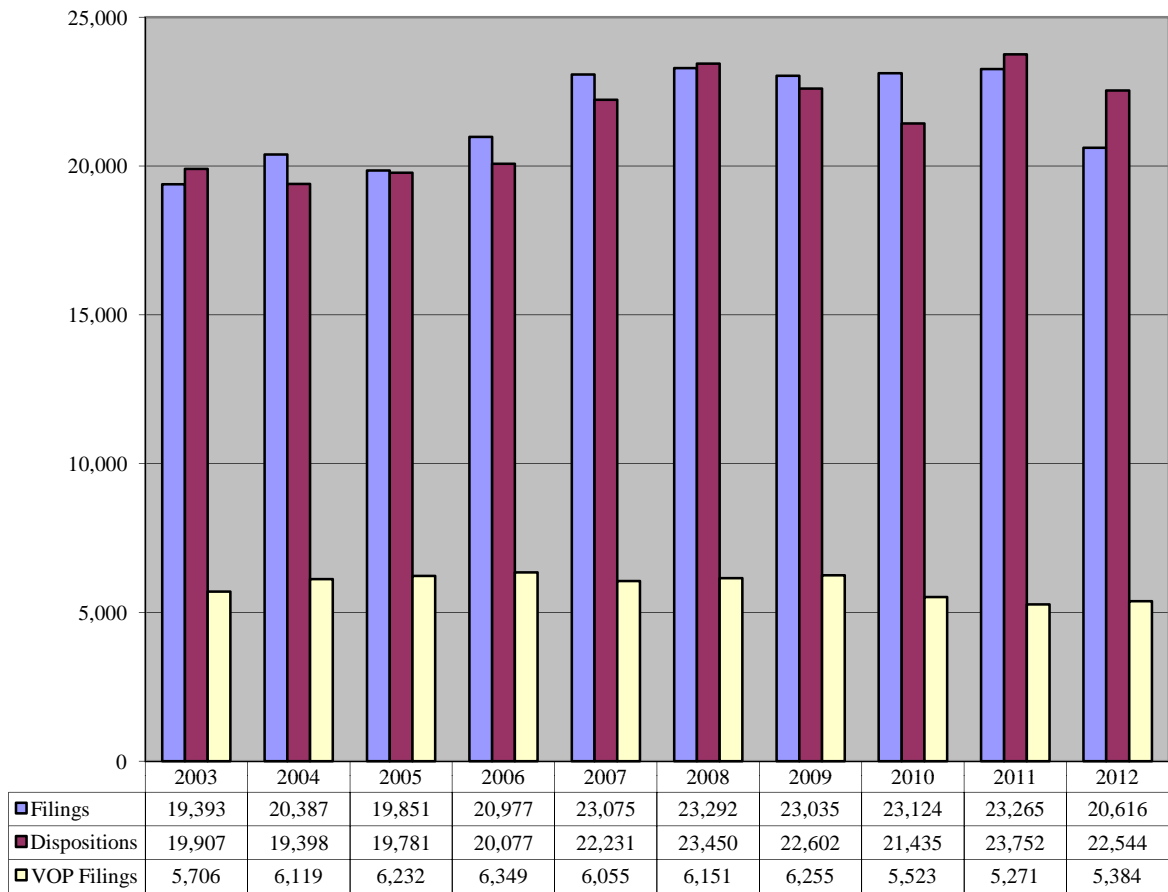
SUPERIOR COURT

Caseload Comparison - Fiscal Years 2011-2012 - Total Case Filings				
	2011	2012	Change	% Change
New Castle County	14,557	13,230	-1327	-9.1%
Kent County	3,940	3,295	-645	-16.4%
Sussex County	4,768	4,091	-677	-14.2%
State	23,265	20,616	-2649	-11.4%

Caseload Comparison - Fiscal Years 2011-2012 - Total Case Dispositions				
	2011	2012	Change	% Change
New Castle County	14,630	14,480	-150	-1.0%
Kent County	4,345	3,843	-502	-11.6%
Sussex County	4,777	4,221	-556	-11.6%
State	23,752	22,544	-1,208	- 5.1%

Source: Court Administrator, Prothonotaries Offices, and Case Scheduling Offices, Superior Court; Administrative Office of the Courts

Superior Court Total 10-Year Caseload Trend



SUPERIOR COURT

Types of Dispositions Fiscal Year 2012 - Civil Complaints																		
Trial Dispositions					Non-Trial Dispositions													
	Judgment for Plaintiff		Judgment for Defendant		Default Judgment for Plaintiff		Other Judgment for Plaintiff		Judgment for Defendant		Voluntary Dismissal		Court Dismissal		Other	Total		
New Castle County	23	0.6%	26	0.7%	163	4.1%	102	2.6%	0	0.0%	2,690	67.4%	907	22.7%	79	2.0%	3,990	
Kent County	7	1.2%	45	7.6%	12	2.0%	0	0.0%	5	0.8%	83	14.0%	436	73.5%	5	0.8%	593	
Sussex County	6	1.3%	7	1.5%	34	7.5%	48	10.6%	10	2.2%	289	63.8%	52	11.5%	7	1.5%	453	
State	36	0.7%	78	1.5%	209	4.2%	150	3.0%	15	0.3%	3,062	60.8%	1,395	27.7%	91	1.8%	5,036	

Types of Dispositions Fiscal Year 2012 - Mechanic's Liens and Mortgages																		
Trial Dispositions					Non-Trial Dispositions													
	Judgment for Plaintiff		Judgment for Defendant		Default Judgment for Plaintiff		Other Judgment for Plaintiff		Judgment for Defendant		Voluntary Dismissal		Court Dismissal		Other	Total		
New Castle County	0	0.0%	0	0.0%	1,499	58.6%	50	2.0%	0	0.0%	666	26.0%	344	13.4%	0	0.0%	2,559	
Kent County	0	0.0%	0	0.0%	573	56.5%	6	0.6%	0	0.0%	251	24.8%	184	18.1%	0	0.0%	1,014	
Sussex County	1	0.1%	1	0.1%	600	62.4%	21	2.2%	5	0.5%	234	24.3%	97	10.1%	3	0.3%	962	
State	1	0.0%	1	0.0%	2,672	58.9%	77	1.7%	5	0.1%	1,151	25.4%	625	13.8%	3	0.1%	4,535	

Types of Dispositions Fiscal Year 2012 - Civil Appeals																		
	Affirmed			Reversed			Remanded			Voluntary Dismissal			Court Dismissal			Other	Total	
New Castle County	82	39.2%		8	3.8%		17	8.1%	29	13.9%		66	31.6%		7	3.3%	209	
Kent County	36	48.6%		3	4.1%		4	5.4%	11	14.9%		18	24.3%		2	2.7%	74	
Sussex County	42	50.0%		9	10.7%		1	1.2%	11	13.1%		21	25.0%		0	0.0%	84	
State	160	43.6%		20	5.4%		22	6.0%	51	13.9%		105	28.6%		9	2.5%	367	

Source: Prothonotary's Offices, Superior Court; Administrative Office of the Courts

SUPERIOR COURT

Performance Breakdowns Fiscal Year 2012 - Civil Complaints - Method of Disposition											
	Trial		Arbitrator's Order		Default Judgment		Voluntary Dismissal		Other		Total
New Castle County	49	1.2%	0	0.0%	163	4.1%	2,689	67.4%	1,089	27.3%	3,990
Kent County	10	1.7%	0	0.0%	41	6.9%	84	14.2%	458	77.2%	593
Sussex County	13	2.9%	0	0.0%	33	7.3%	90	19.8%	319	70.1%	455
State	72	1.4%	0	0.0%	237	4.7%	2,863	56.8%	1,866	37.0%	5,038

Performance Breakdowns Fiscal Year 2012 - Civil Complaints - Elapsed Time										
Average Time From Filing to Disposition										
	Trial		Arbitrator's Order		Default Judgment		Voluntary Dismissal		Other	Total
New Castle County	769.0 days		0 days		146.4 days		689.5 days		614.3 days	647.8 days
Kent County	1,056.2 days		0.0 days		373.0 days		370.2 days		682.9 days	605.1 days
Sussex County	618.7 days		0.0 days		95.9 days		191.3 days		444.6 days	375.9 days
State	814.6 days		0.0 days		205.1 days		417.0 days		580.6 days	542.9 days

Performance Breakdowns Fiscal Year 2012 - Mechanic's Liens and Mortgages - Method of Disposition											
	Trial		Arbitrator's Order		Default Judgment		Voluntary Dismissal		Other		Total
New Castle County	0	0.0%	0	0.0%	1,499	58.6%	666	26.0%	394	15.4%	2,559
Kent County	0	0.0%	0	0.0%	574	56.6%	250	24.7%	190	18.7%	1,014
Sussex County	1	0.1%	0	0.0%	600	62.4%	212	22.0%	149	15.5%	962
State	1	0.0%	0	0.0%	2,673	58.9%	1,128	24.9%	733	16.2%	4,535

Performance Breakdowns Fiscal Year 2012 - Mechanic's Liens and Mortgages - Elapsed Time										
Average Time From Filing to Disposition										
	Trial		Arbitrator's Order		Default Judgment		Voluntary Dismissal		Other	Total
New Castle County	0.0 days		0.0 days		135.1 days		185.0 days		271.1 days	169.0 days
Kent County	0.0 days		0.0 days		157.1 days		369.5 days		812.7 days	332.3 days
Sussex County	837.0 days		0.0 days		131.4 days		160.8 days		321.8 days	168.1 days
State	837.0 days		0.0 days		139.0 days		221.3 days		421.8 days	205.3 days

Source: Prothonotary's Offices, Superior Court; Administrative Office of the Courts

SUPERIOR COURT

Trial Activity Fiscal Year 2012 - Civil Trials						
	Number of Jury Trials	Number of Non-Jury Trials	Number of Special Jury Trials	Total Number of Trials	Trial Time*	Average Trial Time
New Castle County	51	15	0	66	193 days	2.92 days
Kent County	11	0	0	11	37 days	3.36 days
Sussex County	8	15	0	23	45 days	1.96 days
State	70	30	0	100	275 days	2.75 days

Calendar Activity Fiscal Year 2012 - Civil Cases											
	Cases Tried		Cases Settled or Dismissed		Cases Continued for Settlement		Cases Continued Due to Lack of Judge		Cases Continued at Request of Attorney		Total Cases Scheduled
New Castle County	66	3.6%	1,408	77.2%	84	4.6%	4	0.2%	262	14.4%	1,824
Kent County	11	3.3%	224	67.9%	15	4.5%	8	2.4%	72	21.8%	330
Sussex County	23	6.9%	211	63.7%	19	5.7%	1	0.3%	77	23.3%	331
State	100	4.0%	1,843	74.2%	118	4.7%	13	0.5%	411	16.5%	2,485

Performance Summary Fiscal Year 2012 - Civil Cases						
	COMPLAINTS		MECHANIC'S LIENS AND MORTGAGES		APPEALS	
	Number of Dispositions	Average Time from Filing to Disposition	Number of Dispositions	Average Time from Filing to Disposition	Number of Dispositions	Average Time from Filing to Disposition
New Castle County	3,990	647.8 days	2,559	169.0 days	209	309.4 days
Kent County	593	605.1 days	1,014	332.3 days	74	364.4 days
Sussex County	453	375.9 days	962	167.0 days	84	258.3 days
State	5,036	618.3 days	4,535	205.1 days	367	308.8 days

	INVOLUNTARY COMMITMENTS		MISCELLANEOUS		TOTAL	
	Number of Dispositions	Average Time from Filing to Disposition	Number of Dispositions	Average Time from Filing to Disposition	Number of Dispositions	Average Time From Filing to Disposition
New Castle County	1,160	160.5 days	2,345	73.0 days	10,263	335.1 days
Kent County	74	291.6 days	320	82.1 days	2,075	371.4 days
Sussex County	22	435.0 days	563	72.3 days	2,084	193.3 days
State	1,256	173.0 days	3,228	73.7 days	14,422	319.8 days

* Trial time is the total time spent in all trials

Source: Prothonotary's Offices, Superior Court; Administrative Office of the Courts