



**COURT OF COMMON PLEAS**  
**State of Delaware**

**2015 Annual Report Statistical Information**

**COURT OF COMMON PLEAS**

<b>Caseload Summary - Fiscal Years 2014-2015 - Civil Case Filings</b>				
	2014	2015	Change	% Change
New Castle County	5,312	6,169	857	16.1%
Kent County	1,802	2,014	212	11.8%
Sussex County	1,673	2,112	433	25.8%
<b>State</b>	<b>8,787</b>	<b>10,295</b>	<b>1,502</b>	<b>17.1%</b>

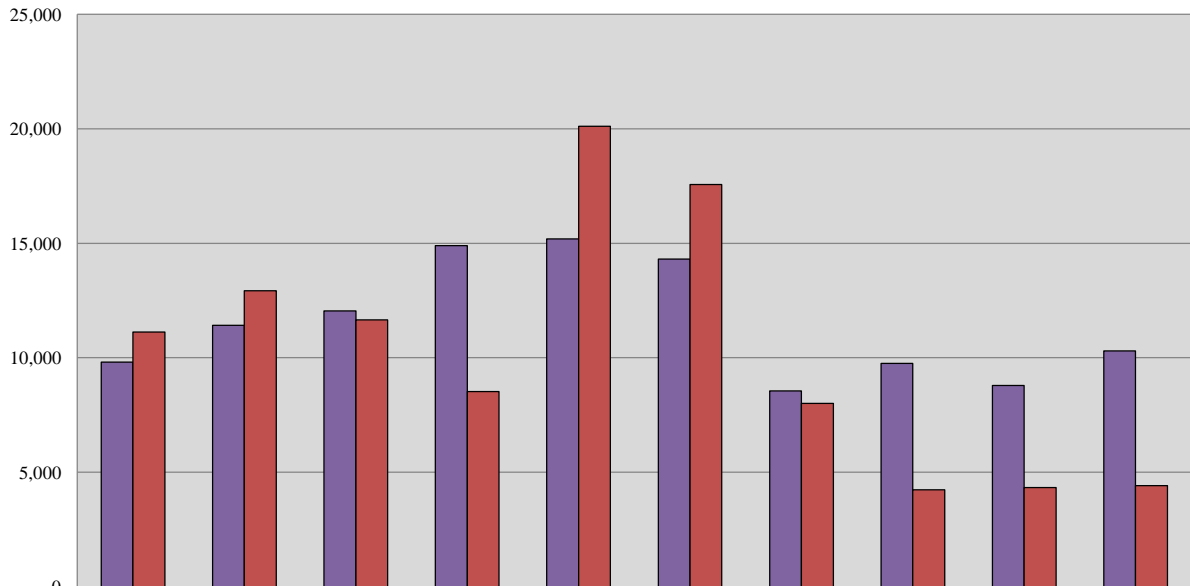
<b>Caseload Summary - Fiscal Years 2014-2015 - Civil Case Dispositions</b>				
	2014	2015	Change	% Change
New Castle County	2,419	2,602	183	7.6%
Kent County	909	748	-161	-17.7%
Sussex County	999	1,065	66	6.6%
<b>State</b>	<b>4,327</b>	<b>4,415</b>	<b>88</b>	<b>2.0%</b>

<b>Caseload Breakdowns - Fiscal Year 2015 - Civil Case Filings</b>						
	Complaints		Civil Judgments, Name Changes & Appeals		Total	
New Castle County	3,987	64.6%	2,182	35.4%	6,169	
Kent County	1,196	59.4%	818	40.6%	2,014	
Sussex County	1,324	62.7%	788	37.3%	2,112	
<b>State</b>	<b>6,507</b>	<b>63.2%</b>	<b>3,788</b>	<b>36.8%</b>	<b>10,295</b>	<b>100%</b>

Source: Court Administrator, Court of Common Pleas; Administrative Office of the Courts.



### Court of Common Pleas 10-Year Civil Caseload Trend



	2006	2007	2008	2009	2010	2011	2012	2013	2014	2015
■ Filings	9,805	11,420	12,045	14,894	15,191	14,314	8,552	9,748	8,793	10,295
■ Dispositions	11,127	12,921	11,657	8,526	20,111	17,573	8,013	4,229	4,327	4,415

Fiscal Year

## COURT OF COMMON PLEAS

### Caseload Summary - Fiscal Years 2014-2015 - Criminal Misdemeanor Case Filings\*

	2014	2015	Change	% Change
New Castle County	53,178	45,885	-7,293	-13.7%
Kent County	29,763	27,824	-1,939	-6.5%
Sussex County	27,130	29,467	2,337	8.6%
<b>State</b>	<b>110,071</b>	<b>103,176</b>	<b>-6,895</b>	<b>-6.3%</b>

### Caseload Summary - Fiscal Years 2014-2015 - Criminal Misdemeanor Case Dispositions

	2014	2015	Change	% Change
New Castle County	44,121	40,192	-3,929	-8.9%
Kent County	22,166	23,084	918	4.1%
Sussex County	22,220	24,090	1,870	8.4%
<b>State</b>	<b>88,507</b>	<b>87,366</b>	<b>-1,141</b>	<b>-1.3%</b>

### Caseload Summary - Fiscal Years 2014-2015 - Criminal Preliminary Hearing Case Filings

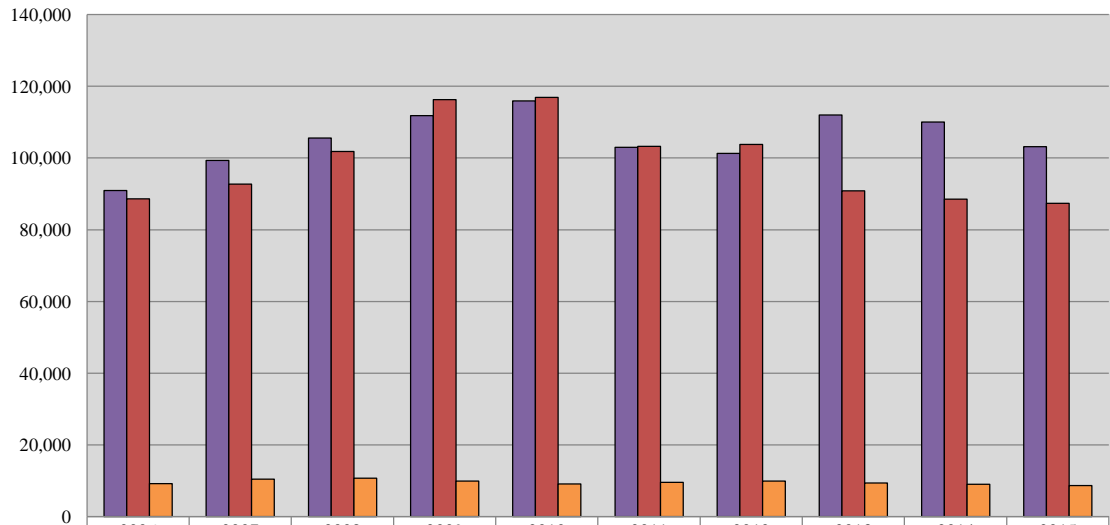
	2014	2015	Change	% Change
New Castle County	4,746	4,389	-357	-7.5%
Kent County	1,972	1,936	-36	-1.8%
Sussex County	2,293	2,296	3	0.1%
<b>State</b>	<b>9,011</b>	<b>8,621</b>	<b>-390</b>	<b>-4.3%</b>

\*Includes Contempt of Court cases.

Source: Court Administrator, Court of Common Pleas; Administrative Office of the Courts.

	2006	2007	2008	2009	2010	2011	2012	2013	2014	2015
<b>Misdemeanor Filings</b>	90,964	99,345	105,607	111,797	115,882	102,939	101,284	112,004	110,071	103,176
<b>Misdemeanor Dispositions</b>	88,577	92,691	101,823	116,278	116,926	103,209	103,802	90,873	88,507	87,366
<b>Preliminary Hearings</b>	9,165	10,413	10,720	9,940	9,066	9,590	9,917	9,398	9,011	8,621

### Court of Common Pleas 10-Year Criminal Caseload Trend



	2006	2007	2008	2009	2010	2011	2012	2013	2014	2015
■ Misdemeanor Filings	90,964	99,345	105,607	111,797	115,882	102,939	101,284	112,004	110,071	103,176
■ Misdemeanor Dispositions	88,577	92,691	101,823	116,278	116,926	103,209	103,802	90,873	88,507	87,366
■ Preliminary Hearings	9,165	10,413	10,720	9,940	9,066	9,590	9,917	9,398	9,011	8,621

Fiscal Year

## COURT OF COMMON PLEAS

### Caseload Summary - Fiscal Years 2014-2015 - Criminal Misdemeanor Case Filings\*

	2014	2015	Change	% Change
New Castle County	53,178	45,885	-7,293	-13.7%
Kent County	29,763	27,824	-1,939	-6.5%
Sussex County	27,130	29,467	2,337	8.6%
<b>State</b>	<b>110,071</b>	<b>103,176</b>	<b>-6,895</b>	<b>-6.3%</b>

### Caseload Summary - Fiscal Years 2014-2015 - Criminal Misdemeanor Case Dispositions

	2014	2015	Change	% Change
New Castle County	44,121	40,192	-3,929	-8.9%
Kent County	22,166	23,084	918	4.1%
Sussex County	22,220	24,090	1,870	8.4%
<b>State</b>	<b>88,507</b>	<b>87,366</b>	<b>-1,141</b>	<b>-1.3%</b>

### Caseload Summary - Fiscal Years 2014-2015 - Criminal Preliminary Hearing Case Filings

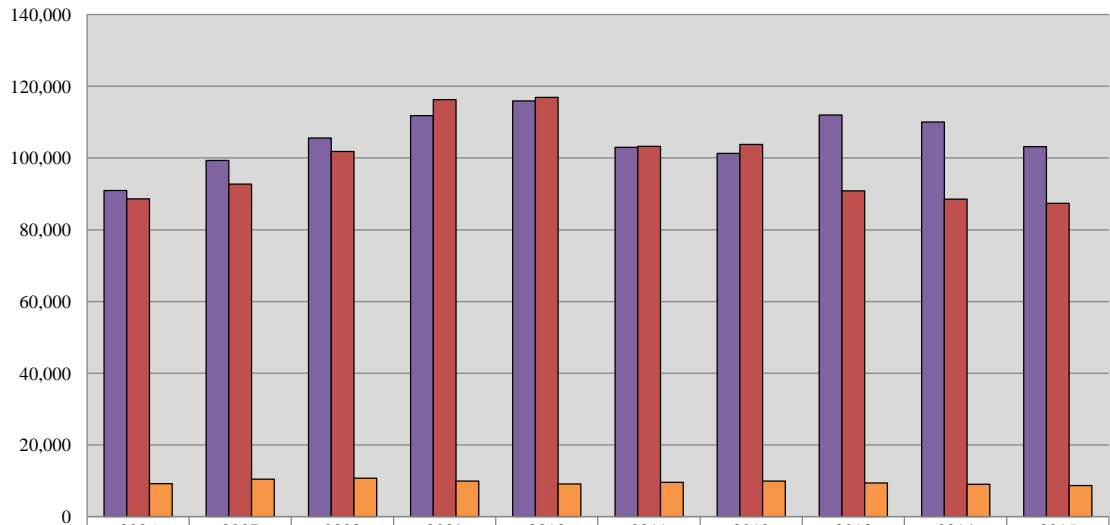
	2014	2015	Change	% Change
New Castle County	4,746	4,389	-357	-7.5%
Kent County	1,972	1,936	-36	-1.8%
Sussex County	2,293	2,296	3	0.1%
<b>State</b>	<b>9,011</b>	<b>8,621</b>	<b>-390</b>	<b>-4.3%</b>

\*Includes Contempt of Court cases.

Source: Court Administrator, Court of Common Pleas; Administrative Office of the Courts.



### Court of Common Pleas 10-Year Criminal Caseload Trend



	2006	2007	2008	2009	2010	2011	2012	2013	2014	2015
Misdemeanor Filings	90,964	99,345	105,607	111,797	115,882	102,939	101,284	112,004	110,071	103,176
Misdemeanor Dispositions	88,577	92,691	101,823	116,278	116,926	103,209	103,802	90,873	88,507	87,366
Preliminary Hearings	9,165	10,413	10,720	9,940	9,066	9,590	9,917	9,398	9,011	8,621

Fiscal Year

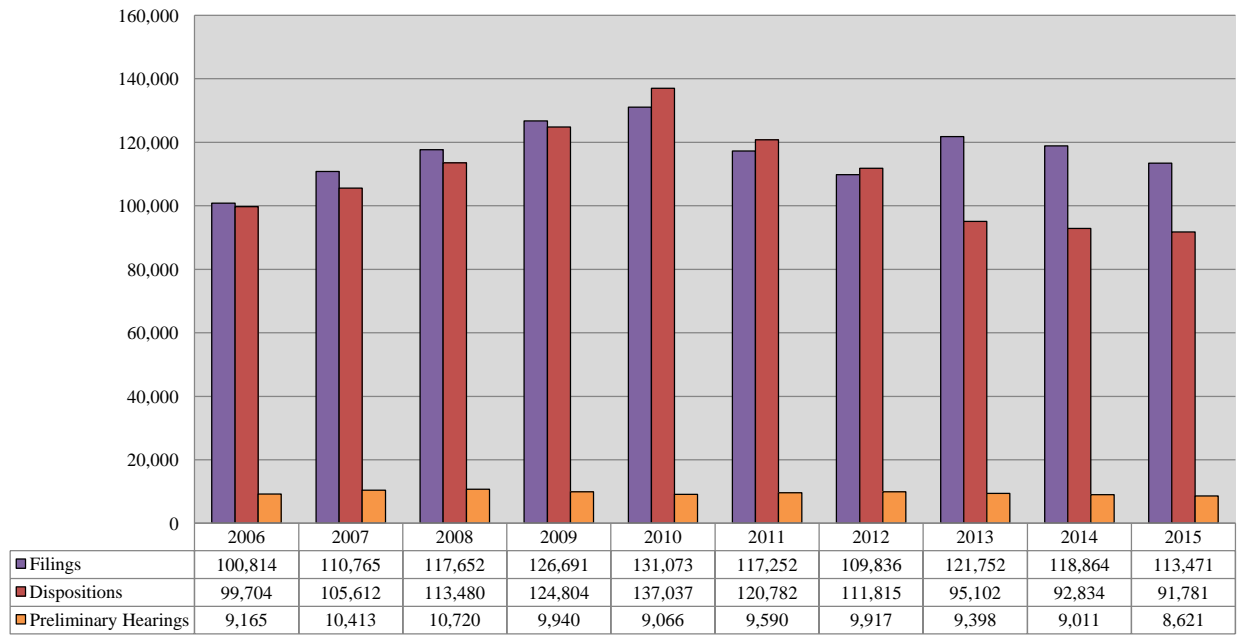
**COURT OF COMMON PLEAS**

<b>Caseload Summary - Fiscal Years 2014-2015 - Total Criminal Misdemeanor and Civil Case Filings</b>				
	2014	2015	Change	% Change
New Castle County	58,490	52,054	-6,436	-11.0%
Kent County	31,565	29,838	-1,727	-5.5%
Sussex County	28,809	31,579	2,770	9.6%
<b>State</b>	<b>118,864</b>	<b>113,471</b>	<b>-5,393</b>	<b>-4.5%</b>

<b>Caseload Summary - Fiscal Years 2014-2015 - Total Criminal Misdemeanor and Civil Case Dispositions</b>				
	2014	2015	Change	% Change
New Castle County	46,540	42,794	-3,746	-8.0%
Kent County	23,075	23,832	757	3.3%
Sussex County	23,219	25,155	1,936	8.3%
<b>State</b>	<b>92,834</b>	<b>91,781</b>	<b>-1,053</b>	<b>-1.1%</b>

Source: Court Administrator, Court of Common Pleas; Administrative Office of the Courts.

### Court of Common Pleas 10-Year Total Caseload Trend (Civil & Criminal)



Fiscal Year