



State of Delaware

2015 Annual Report Statistical Information



SUPREME COURT
State of Delaware

2015 Annual Report Statistical Information

SUPREME COURT

Caseload Comparison - Fiscal Years 2014-2015 - Filings				
	2014	2015	Change	% Change
Criminal Appeals	417	414	-3	-0.7%
Civil Appeals	249	245	-4	-1.6%
Certifications	4	2	-2	-50%
Original Applications	21	26	5	23.8%
Bd. on Prof. Resp.	24	15	-9	-37.5%
Bd. of Bar Exam	0	0	0	0%
Advisory Opinions	0	0	0	0%
Other	1	1	0	0.0%
Total	716	703	-13	-1.8%

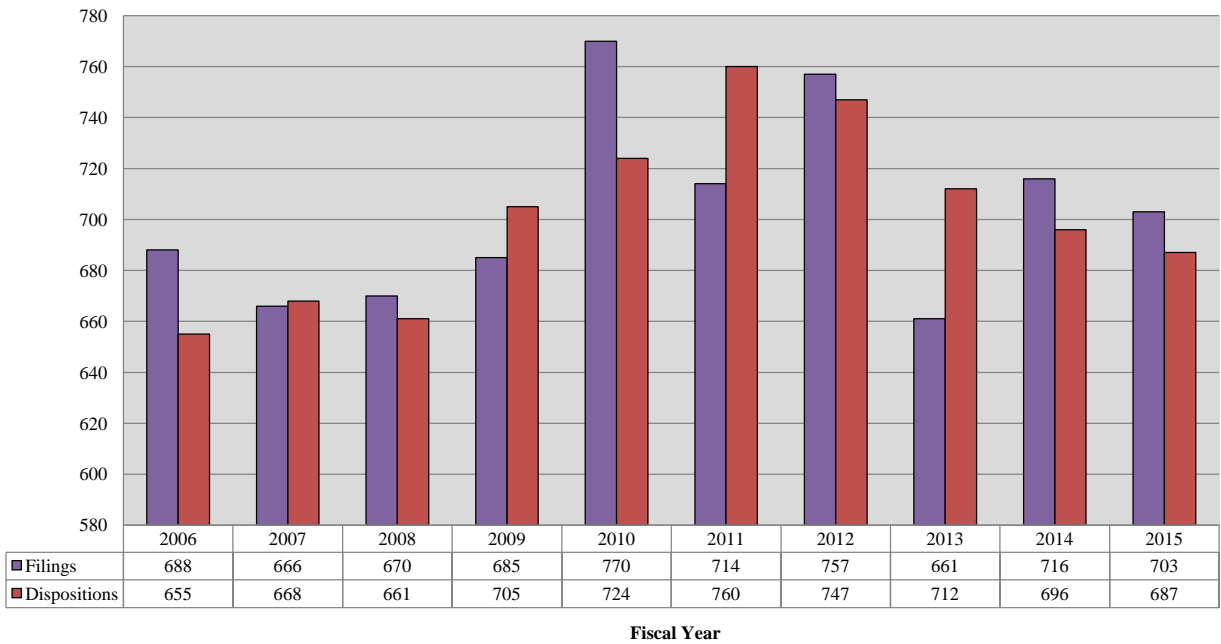
Caseload Comparison - Fiscal Years 2014-2015 - Dispositions				
	2014	2015	Change	% Change
Criminal Appeals	384	396	12	3.1%
Civil Appeals	263	251	-12	-4.6%
Certifications	4	3	-1	-25%
Original Applications	19	18	-1	-5.3%
Bd. on Prof. Resp.	24	13	-11	-46%
Bd. of Bar Exam	0	0	0	0%
Advisory Opinions	0	0	0	0%
Other	2	6	4	200%
Total	696	687	-9	-1.3%

Bd. on Prof. Resp. = Board on Professional Responsibility.

Bd. of Bar Exam. = Board of Bar Examiners.

Source: Court Administrator and Clerk of the Supreme Court; Administrative Office of the Courts.

Supreme Court 10-Year Total Caseload Trend



SUPREME COURT

Caseload Breakdowns - Fiscal Year 2015 - Filings										
	Court of Chancery		Superior Court		Family Court		Non-Court Originated		Total	
Criminal Appeals	0	0%	414	100%	0	0%	0	0%	414	100%
Civil Appeals	65	26.5%	121	49.4%	59	24.1%	0	0%	245	100%
Other*	0	0%	0	0%	0	0%	44	100%	44	100%
Total	65	9.2%	535	76.1%	59	8.4%	44	6.3%	703	100%

Caseload Breakdowns - Fiscal Year 2015- Dispositions										
	Court of Chancery		Superior Court		Family Court		Non-Court Originated		Total	
Criminal Appeals	0	0%	397	100%	0	0%	0	0%	397	100%
Civil Appeals	66	26.4%	127	50.8%	57	22.8%	0	0%	250	100%
Other*	0	0%	0	0%	0	0%	40	100%	40	100%
Total	66	9.6%	524	76.3%	57	8.3%	40	5.8%	687	100%

*Includes Original Applications; Certifications; Advisory Opinions; Appeals from the Board on Professional Responsibility and the Board of Bar Examiners; and Other Filing & Disposition Types.

Source: Court Administrator and Clerk of the Supreme Court; Administrative Office of the Courts.

SUPREME COURT

Types of Dispositions - Fiscal Year 2015										
	Affirmed		Affirmed Part/Reversed Part		Reversed		Remanded		Voluntary Dismissal	
Criminal Appeals	254	64.0%	0	0.0%	12	3.0%	5	1.3%	34	8.6%
Civil Appeals & Other	139	47.9%	4	1.4%	21	7.2%	2	0.7%	43	14.8%
Total	393	57.2%	4	0.6%	33	4.8%	7	1.0%	77	11.2%
	Court Dismissal		Leave to Appeal Denied		Other*				Total	
Criminal Appeals	91	22.9%	0	0.0%	1	0.3%			397	100%
Civil Appeals & Other	51	17.6%	14	4.8%	16	5.5%			290	100%
Total	142	20.7%	14	2.0%	17	2.5%			687	100%

Methods of Dispositions - Fiscal Year 2015						
	Assigned Opinion		Per Curiam Opinion		Written Order	
Criminal Appeals	33	8.3%	0	0%	327	82.6%
Civil Appeals	31	12.4%	0	0%	180	71.7%
Certifications	1	33%	0	0%	2	67%
Original Applications	0	0%	0	0%	17	94%
Bd. on Prof. Resp.	1	8%	1	8%	10	76.9%
Bd. of Bar Exam.	0	0%	0	0%	0	0%
Advisory Opinions	0	0%	0	0%	0	0%
Other	0	0%	0	0%	5	83%
Total	66	9.6%	1	0%	541	78.7%
	Voluntary Dismissal		Other		Total	
Criminal Appeals	36	9.1%	0	0%	396	100%
Civil Appeals	40	15.9%	0	0%	251	100%
Certifications	0	0.0%	0	0%	3	100%
Original Applications	1	5.6%	0	0%	18	100%
Bd. on Prof. Resp.	1	7.7%	0	0%	13	100%
Bd. of Bar Exam.	0	0%	0	0%	0	-
Advisory Opinions	0	0%	0	0%	0	-
Other	1	17%	0	0%	6	100%
Total	79	11.5%	0	0%	687	100%

Bd. on Prof. Resp. = Board on Professional Responsibility.

Bd. of Bar Exam. = Board of Bar Examiners.

Source: Court Administrator and Clerk of the Supreme Court; Administrative Office of the Courts.

SUPREME COURT

Performance Summary - Fiscal Year 2015 - Average Elapsed Time to Disposition					
	Number of Dispositions	Average Time From Filing to Disposition		Average Time From Submission to Disposition*	
Criminal Appeals	396	172.8	days	38.7	days
Civil Appeals	251	187.1	days	27.1	days
Certifications	3	171.3	days	26.0	days
Original Applications	18	50.5	days	24.5	days
BPR	13	62.4	days	5.3	days
BBE	0	-	days	-	days
Advisory Opinions	0	-	days	-	days
Other	6	35.5	days	16.8	days
Total	687	167.2	days	33.3	days

Caseload Comparison - Fiscal Years 2014-2015 - Average Time from Filing to Disposition							
	2014		2015		Change	% Change	
Criminal Appeals	151.6	days	172.8	days	21.2	days	14.0%
Civil Appeals	183.2	days	187.1	days	3.9	days	2.1%
Certifications	174.3	days	171.3	days	-3.0	days	-1.7%
Original Applications	41.7	days	50.5	days	8.8	days	21.1%
BPR	54.6	days	62.4	days	7.8	days	14.3%
BBE		days	-	days	-	days	-
Advisory Opinions		days	-	days	-	days	-
Other	24.0	days	35.5	days	11.5	days	47.9%
Total	168.1	days	167.2	days	-0.9	days	-0.5%

*Average time from date submitted for judicial decision to actual date of disposition. The time for a case that is submitted and disposed in the same day is zero. Not all Supreme Court cases require a judicial decision.

BPR = Board on Professional Responsibility.

BBE = Board of Bar Examiners.

Source: Court Administrator and Clerk of the Supreme Court; Administrative Office of the Courts.

SUPREME COURT

Performance Breakdowns - Fiscal Year 2015 - Elapsed Time by Disposition Type					
	Number of Dispositions	Average Time From Filing to Disposition		Average Time From Submission to Disposition*	
Affirmed	393	208.4	days	45.5	days
Affirmed Part/Reversed Part	4	308.3	days	38.3	days
Reversed	33	313.2	days	39.8	days
Remanded	7	266.7	days	86.7	days
Voluntary Dismissal	77	107.7	days	5.3	days
Court Dismissal	142	70.3	days	14.9	days
Leave to Appeal Denied	14	34.6	days	19.2	days
Other	17	54.3	days	10.0	days
Total	687	167.2	days	33.3	days

Performance Breakdowns - Fiscal Year 2015 - Elapsed Time by Disposition Method					
	Number of Dispositions	Average Time From Filing to Disposition		Average Time From Submission to Disposition*	
Assigned Opinion	66	296.2	days	38.8	days
Per Curiam Opinion	1	183.0	days	16.0	days
Written Order	541	160.3	days	36.7	days
Voluntary Dismissal	79	106.6	days	5.3	days
Other	0	-	days	-	days
Total	687	167.2	days	33.3	days

*Average time from date submitted for judicial decision to actual date of disposition. The time for a case that is submitted and disposed in the same day is zero. Not all Supreme Court cases require a judicial decision.

Source: Court Administrator and Clerk of the Supreme Court; Administrative Office of the Courts.



COURT OF CHANCERY
State of Delaware

2015 Annual Report Statistical Information

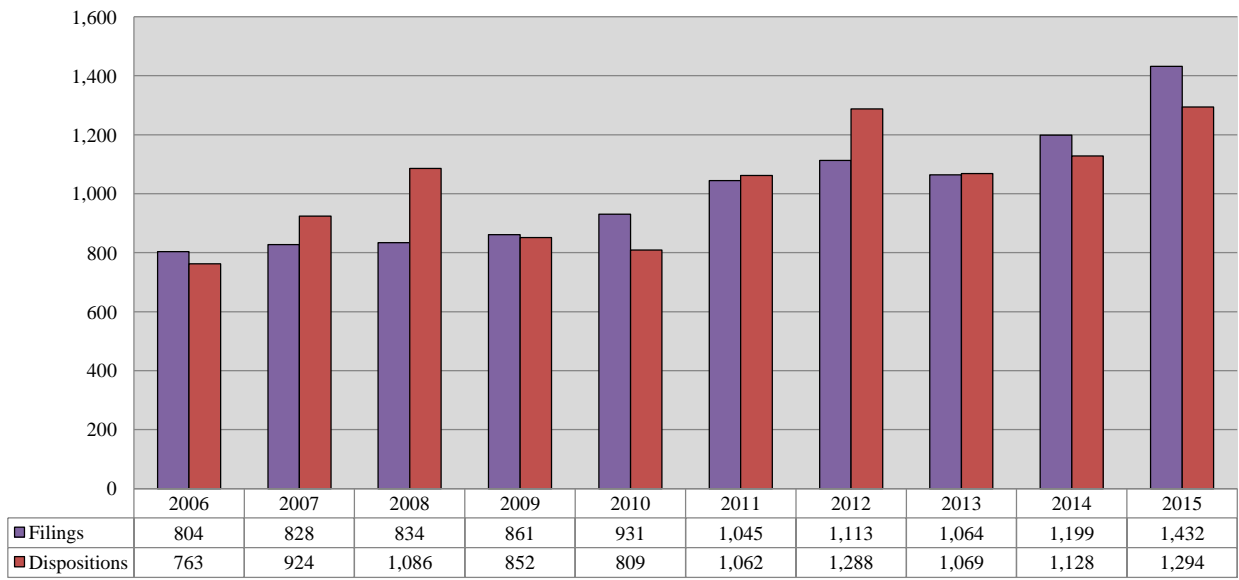
COURT OF CHANCERY

Caseload Comparison - Fiscal Years 2014-2015 - Civil Filings				
	2014	2015	Change	% Change
State	1,199	1,432	233	19.4%

Caseload Comparison - Fiscal Years 2014-2015 - Civil Dispositions				
	2014	2015	Change	% Change
State	1,128	1,294	166	14.7%

Source: Registers in Chancery; Administrative Office of the Courts.

Court of Chancery 10-Year Civil Caseload Trend



Fiscal Year

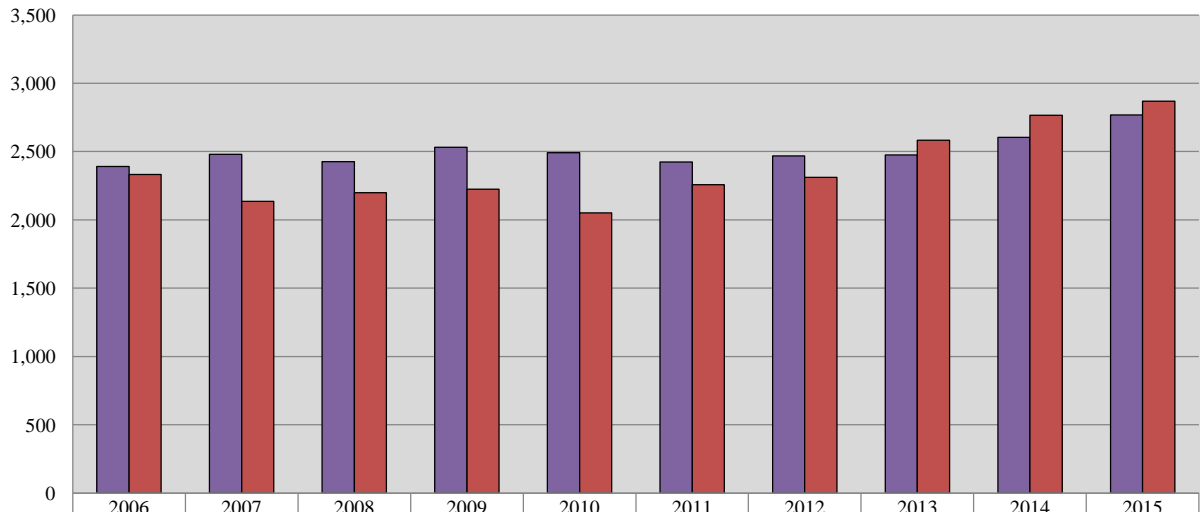
COURT OF CHANCERY

Caseload Comparison - Fiscal Years 2014-2015 - Estates Filings				
	2014	2015	Change	% Change
State	2,605	2,769	164	6.3%

Caseload Comparison - Fiscal Years 2014-2015 - Estates Dispositions				
	2014	2015	Change	% Change
State	2,765	2,870	105	3.8%

Source: Register of Wills; Administrative Office of the Courts.

Court of Chancery 10-Year Estates Caseload Trend



■ Filings	2,390	2,479	2,427	2,531	2,492	2,424	2,469	2,476	2,605	2,769
■ Dispositions	2,333	2,135	2,199	2,225	2,051	2,258	2,312	2,582	2,765	2,870

Fiscal Year

COURT OF CHANCERY

Caseload Comparison - Fiscal Years 2014-2015 - Miscellaneous Matters Filings				
	2014	2015	Change	% Change
State	733	341	-392	-53.5%

Caseload Comparison - Fiscal Years 2014-2015 - Miscellaneous Matters Dispositions				
	2014	2015	Change	% Change
State	1,290	741	-549	-42.6%

Source: Registers of Wills; Administrative Office of the Courts.

COURT OF CHANCERY

Caseload Breakdown - Fiscal Year 2015 - Miscellaneous Matters Filings

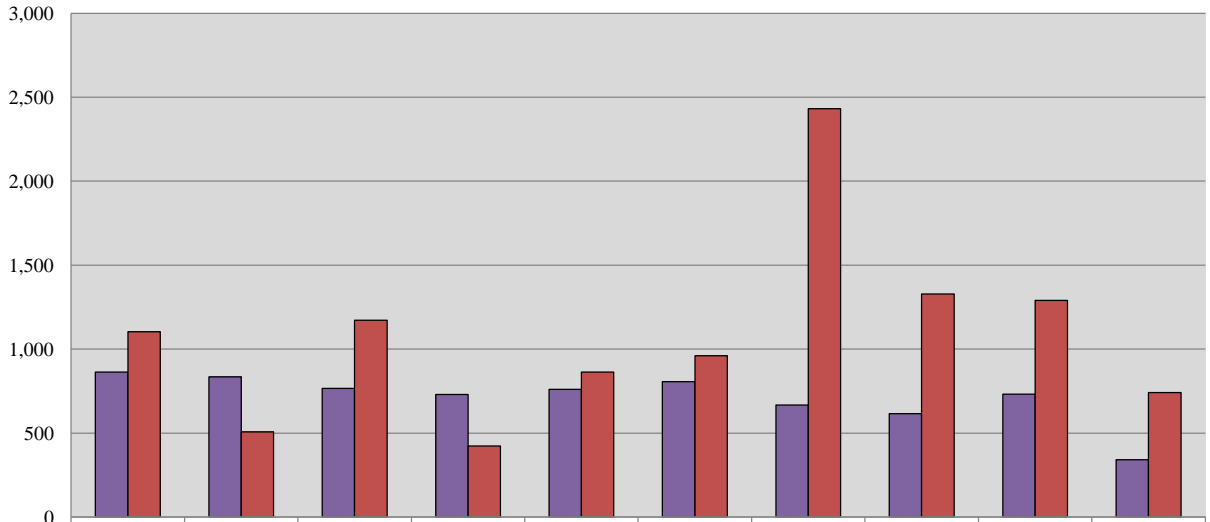
	Guardians for Minors	Guardians for Infirm	Trusts	Other Matters	Total
State	65 19.1%	234 68.6%	4 1.2%	38 11.1%	341 100%

Caseload Breakdown - Fiscal Year 2015 - Miscellaneous Matters Dispositions

	Guardians for Minors	Guardians for Infirm	Trusts	Other Matters	Total
State	270 36.4%	299 40.4%	121 16.3%	51 6.9%	741 100%

Source: Registers in Chancery; Administrative Office of the Courts.

Court of Chancery 10-Year Miscellaneous Caseload Trend



	2006	2007	2008	2009	2010	2011	2012	2013	2014	2015
■ Filings	863	835	766	730	761	807	667	615	733	341
■ Dispositions	1,104	508	1,172	423	864	961	2,432	1,328	1,290	741

Fiscal Year

COURT OF CHANCERY

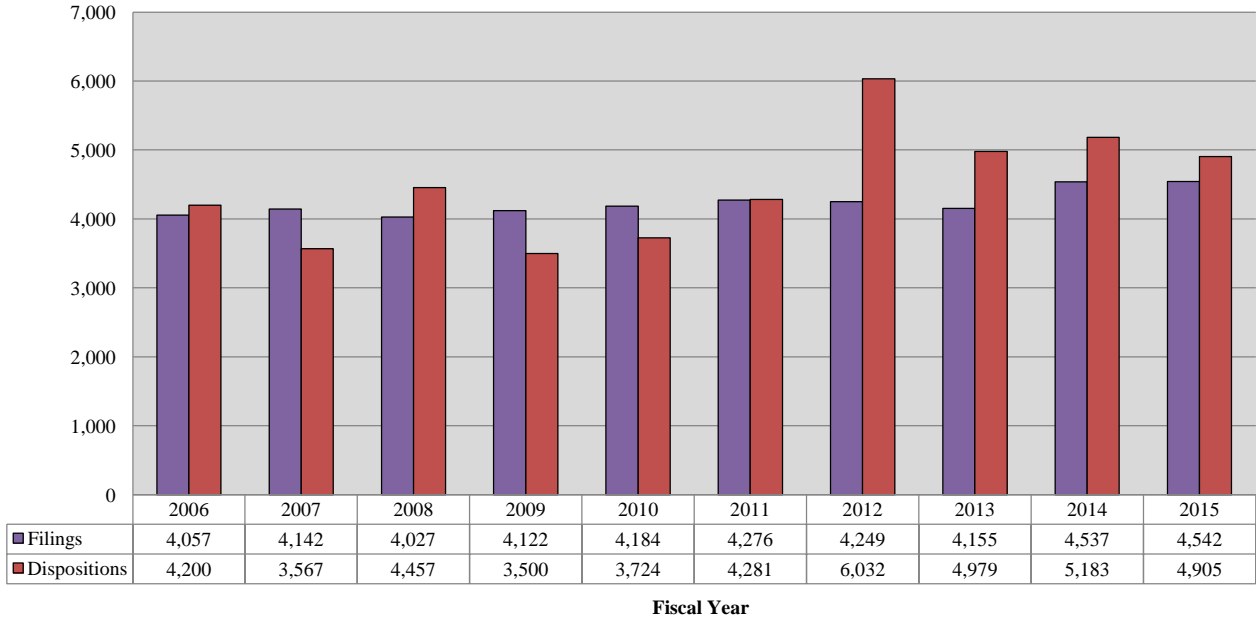
Caseload Comparison - Fiscal Years 2014-2015 - Total Case Filings*				
	2014	2015	Change	% Change
State	4,537	4,542	5	0.1%

Caseload Comparison - Fiscal Years 2014-2015 - Total Case Dispositions*				
	2014	2015	Change	% Change
State	5,183	4,905	-278	-5.4%

*Total includes Civil, Miscellaneous, and Estates.

Source: Registers in Chancery; Registers of Wills; Administrative Office of the Courts.

Court of Chancery 10-Year Total Caseload Trend (Civil, Miscellaneous & Estates)





SUPERIOR COURT
State of Delaware

2015 Annual Report Statistical Information

SUPERIOR COURT

Caseload Comparison - Fiscal Years 2014-2015 - Civil Case Filings				
	2014	2015*	Change	% Change
New Castle County	8,774	8,381	-393	-4.7%
Kent County	1,541	1,553	12	0.8%
Sussex County	1,657	1,564	-93	-5.9%
State	11,972	11,498	-474	-4.1%

Caseload Comparison - Fiscal Years 2014-2015 - Civil Case Dispositions				
	2014	2015	Change	% Change
New Castle County	8,154	8,228	74	0.9%
Kent County	1,430	1,517	87	5.7%
Sussex County	1,582	1,593	11	0.7%
State	11,166	11,338	172	1.5%

* Report incorporates additional data made available since publication of the FY 2015 Annual Report.

Source: Prothonotary's Offices, Superior Court; Administrative Office of the Courts.

SUPERIOR COURT

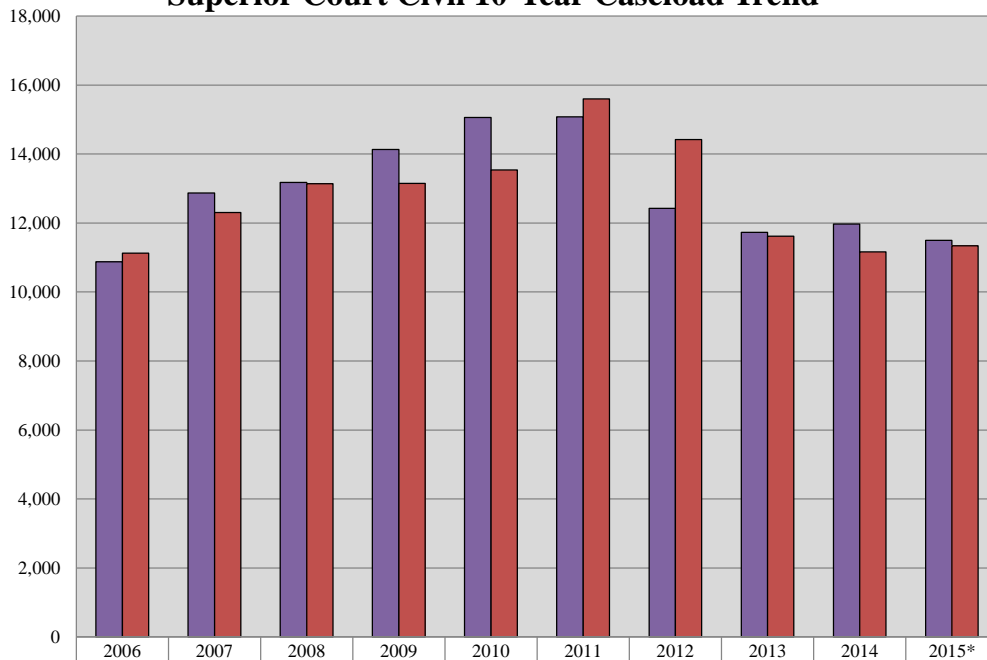
Caseload Breakdowns - Fiscal Year 2015* - Civil Case Filings						
	Complaints		Mechanic's Liens and Mortgages		Appeals	
New Castle County	3,219	38.4%	1,540	18.4%	112	1.3%
Kent County	403	25.9%	591	38.1%	21	1.4%
Sussex County	352	22.5%	627	40.1%	39	2.5%
State	3,974	34.6%	2,758	24.0%	172	1.5%
	Involuntary Commitments		Miscellaneous		Total	
New Castle County	632	7.5%	2,878	34.3%	8,381	100%
Kent County	159	10.2%	379	24.4%	1,553	100%
Sussex County	-	0%	546	34.9%	1,564	100%
State	791	6.9%	3,803	33.1%	11,498	100%

Caseload Breakdowns - Fiscal Year 2015- Civil Case Dispositions						
	Complaints		Mechanic's Liens and Mortgages		Appeals	
New Castle County	3,536	43.0%	1,446	17.6%	119	1.4%
Kent County	445	29.2%	551	36.2%	41	2.7%
Sussex County	364	22.8%	596	37.4%	46	2.9%
State	4,345	38.3%	2,593	22.9%	206	1.8%
	Involuntary Commitments		Miscellaneous		Total	
New Castle County	539	6.6%	2,585	31.4%	8,225	100%
Kent County	133	8.7%	354	23.2%	1,524	100%
Sussex County	6	0.4%	581	36.5%	1,593	100%
State	678	6.0%	3,520	31.0%	11,342	100%

* Report incorporates additional data made available since publication of the FY 2015 Annual Report.

Source: Prothonotary's Offices, Superior Court; Administrative Office of the Courts.

Superior Court Civil 10-Year Caseload Trend



	2006	2007	2008	2009	2010	2011	2012	2013	2014	2015*
Filings	10,878	12,869	13,177	14,137	15,060	15,085	12,430	11,726	11,972	11,498
Dispositions	11,130	12,308	13,144	13,151	13,543	15,601	14,422	11,619	11,166	11,338

Fiscal Year

* Report incorporates additional data made available since publication of the FY 2015 Annual Report.

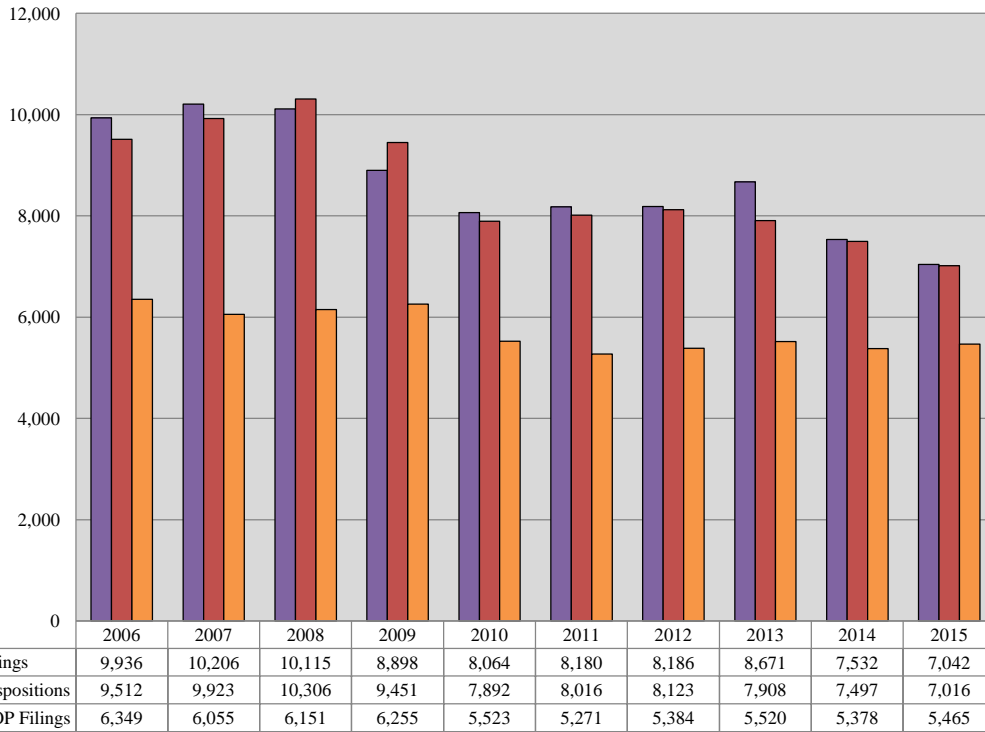
SUPERIOR COURT

Caseload Comparison - Fiscal Years 2014-2015 - Criminal Case Filings				
	2014	2015	Change	% Change
New Castle County	4,051	3,677	-374	-10.2%
Kent County	1,551	1,410	-141	-10.0%
Sussex County	1,930	1,955	25	1.3%
State	7,532	7,042	-490	-7.0%

Caseload Comparison - Fiscal Years 2014-2015 - Criminal Case Dispositions				
	2014	2015	Change	% Change
New Castle County	3,941	3,831	-110	-2.9%
Kent County	1,666	1,446	-220	-15.2%
Sussex County	1,890	1,739	-151	-8.7%
State	7,497	7,016	-481	-6.9%

Source: Court Administrator and Case Scheduling Office, Superior Court;
Administrative Office of the Courts.

Superior Court Criminal 10-Year Caseload Trend



Fiscal Year

VOP = Violation of Probation.

SUPERIOR COURT

Caseload Breakdowns- Fiscal Year 2015 - Criminal Filings									
	Indictment		Rule 9 Warrant		Information		Other*		Total
New Castle County	2,434	66.2%	214	5.8%	1,002	27.3%	27	0.7%	3,677
Kent County	1,119	79.3%	41	2.9%	245	17.4%	6	0.4%	1,411
Sussex County	698	35.7%	257	13.1%	1,000	51.2%	0	0%	1,955
State	4,251	60.4%	512	7.3%	2,247	31.9%	33	0.5%	7,043

Caseload Breakdowns- Fiscal Year 2015 - Criminal Dispositions										
	Trial		Guilty Plea**		Nolle Prosequi		Remand/Transfer		Order/Reserved Decision	
New Castle County	150	3.9%	2,629	69.0%	493	12.9%	1	0.0%	3	0.1%
Kent County	26	1.8%	943	65.6%	250	17.4%	33	2.3%	N/A	N/A
Sussex County	24	1.4%	1,369	78.7%	318	18.3%	2	0.1%	N/A	N/A
State	200	2.9%	4,941	70.7%	1,061	15.2%	36	0.5%	3	0.0%
	Dismissal		FOP/Drug Court		Consolidation		Total		Order on Reserved Decision	
New Castle County	19	0.5%	353	9.3%	163	4.3%	3,811	100%	cases were added in 2015 for New Castle County Only. Kent and Sussex counties will be added in 2016.	
Kent County	52	3.6%	85	5.9%	48	3.3%	1,437	100%		
Sussex County	4	0.2%	21	1.2%	1	0.1%	1,739	100%		
State	75	1.1%	459	6.6%	212	3.0%	6,987	100%		

*Includes appeals, transfers, reinstatements, and severances.

**Includes Probation Before Judgment.

FOP = First Offender Program.

Source: Court Administrator and Case Scheduling Office, Superior Court; Administrative Office of the Courts.

SUPERIOR COURT

Types of Dispositions - Fiscal Year 2015 - Criminal Trials - Part One							
	Jury Trial		Non-Jury Trial		Total		
New Castle County	147	85.5%	25	14.5%	172	100%	
Kent County	23	88.5%	3	11.5%	26	100%	
Sussex County	24	100%	0	11.5%	24	100%	
State	194	87.4%	28	12.6%	222	100%	

	Guilty		Not Guilty*		No Final Disposition**		Total	
New Castle County	115	66.9%	35	20.3%	22	12.8%	172	100%
Kent County	20	76.9%	6	23.1%	0	0%	26	100%
Sussex County	16	66.7%	6	25.0%	2	8.3%	24	100%
State	151	68.0%	47	21.2%	24	10.8%	222	100%

*Includes Acquittals, Dismissals at Trial, and Nolle Prosequis at Trial.

**Includes Hung Juries, Mistrials, and Reserved Decisions.

Source: Court Administrator and Case Scheduling Office, Superior Court; Administrative Office of the Courts.

SUPERIOR COURT

Types of Dispositions - Fiscal Year 2015 - Criminal Trials - Part Two									
Jury Trial									
	Guilty	Guilty LIO	Not Guilty	Pled Guilty at Trial	Nol Pros/Dismissed at Trial	Mistrial	Hung Jury	Total	
New Castle County	78	12	29	7	1	4	16	147	
Kent County	18	0	4	0	1	0	0	23	
Sussex County	14	1	4	1	2	2	0	24	
State	110	13	37	8	4	6	16	194	
Non-Jury Trial									
	Guilty	Guilty LIO	Not Guilty	Pled Guilty at Trial	Nol Pros/Dismissed at Trial	Mistrial	Reserved Decision	Total*	
New Castle County	15	3	5	0	0	0	3	26	
Kent County	2	0	1	0	0	0	0	3	
Sussex County	0	0	0	0	0	0	0	0	
State	17	3	6	0	0	0	3	29	
All Trials									
	Guilty	Guilty LIO	Not Guilty	Pled Guilty at Trial	Nol Pros/Dismissed at Trial	Mistrial	Hung Jury	Reserved Decision	Total*
New Castle County	93	15	34	7	1	4	16	3	173
Kent County	20	0	5	0	1	0	0	0	26
Sussex County	14	1	4	1	2	2	0	0	24
State	127	16	43	8	4	6	16	3	223

Types of Dispositions Fiscal Year 2015 - Criminal Nolle Prosequis									
	Nolle Prosequis By Special Condition		Nolle Prosequis By Merit		NPL		Total		
New Castle County	124	25.2%	337	68.4%	32	0.1	493	100%	
Kent County	164	65.6%	86	34.4%	N/A	N/A	250	100%	
Sussex County	36	11.3%	282	88.7%	N/A	N/A	318	100%	
State	324	30.5%	705	66.4%	32	3.0%	1,061	100%	

*Does not include Reserved Decisions.

LIO = Lesser Included Offense.

Nol Pros = Nolle Prosequi.

Source: Court Administrator and Case Scheduling Office, Superior Court; Administrative Office of the Courts.

SUPERIOR COURT

Types of Dispositions Fiscal Year 2015 - Criminal Felony Guilty Pleas						
	Pled Guilty Original		Pled Guilty Lesser		Total	
New Castle County	1,415	85.7%	237	14.3%	1,652	100%
Kent County	496	86.7%	76	13.3%	572	100%
Sussex County	588	77.4%	172	22.6%	760	100%
State	2,499	83.7%	485	16.3%	2,984	100%

Types of Dispositions Fiscal Year 2015 - Criminal Misdemeanor Guilty Pleas						
	Pled Guilty Original		Pled Guilty Lesser*		Total	
New Castle County	610	62.4%	367	37.6%	977	100%
Kent County	190	51.2%	181	48.8%	371	100%
Sussex County	398	65.4%	211	34.6%	609	100%
State	1,198	61.2%	759	38.8%	1,957	100%

Types of Dispositions Fiscal Year 2015 - Criminal Total Guilty Pleas						
	Pled Guilty Original		Pled Guilty Lesser*		Total	
New Castle County	2,025	77.0%	604	23.0%	2,629	100%
Kent County	686	72.7%	257	27.3%	943	100%
Sussex County	986	72.0%	383	28.0%	1,369	100%
State	3,697	74.8%	1,244	25.2%	4,941	100%

*Includes Probation Before Judgment.

Source: Court Administrator and Case Scheduling Office, Superior Court; Administrative Office of the Courts.

SUPERIOR COURT

Performance Comparison - Fiscal Years 2014-2015 - Criminal Cases - Average Time from Arrest to Disposition				
	2014 (in days)	2015 (in days)	Change (in days)	% Change
New Castle County	158.7	165.1	6.4	3.9%
Kent County	187.7	181.5	-6.2	-3.4%
Sussex County	171.6	173.4	1.8	1.0%
State	168.4	170.5	2.1	1.2%

Performance Comparison - Fiscal Years 2014-2015 - Criminal Cases - Average Time from Indictment to Disposition				
	2014 (in days)	2015 (in days)	Change (in days)	% Change
New Castle County	92.7	101.2	8.5	8.4%
Kent County	128.2	114.2	-14.0	-12.3%
Sussex County	113.9	107.2	-6.7	-6.3%
State	105.9	105.4	-0.5	-0.5%

Source: Court Administrator and Case Scheduling Office, Superior Court;
Administrative Office of the Courts.

SUPERIOR COURT

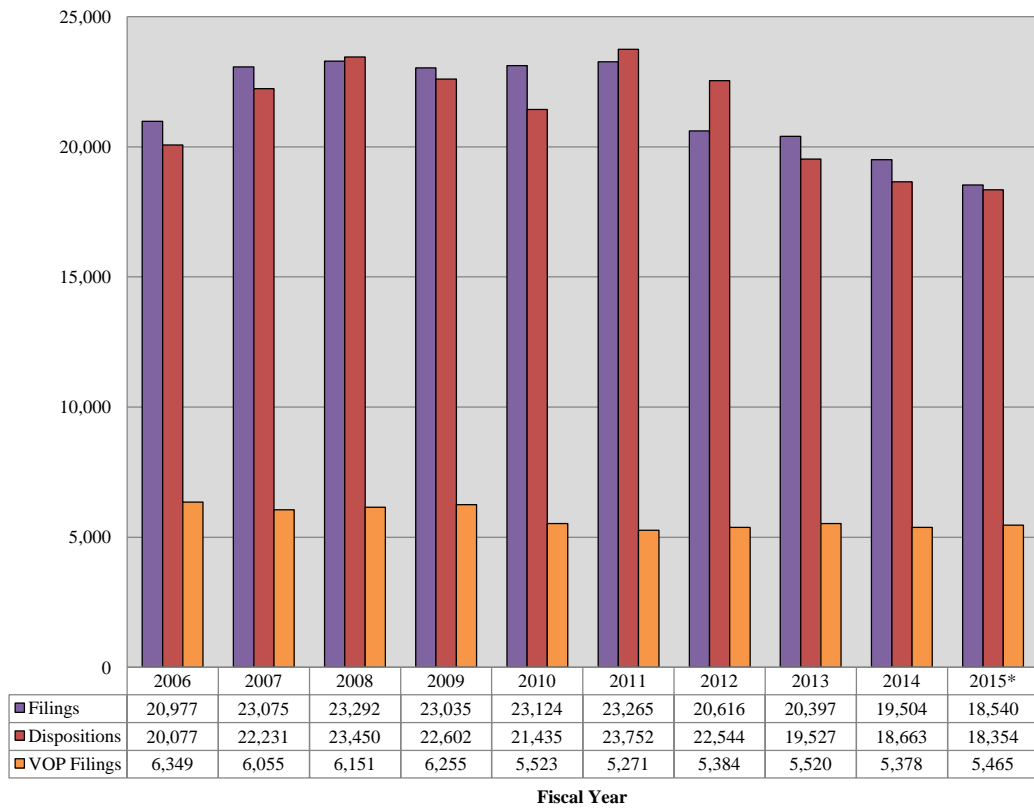
Caseload Comparison - Fiscal Years 2014-2015* - Total Case Filings				
	2014	2015	Change	% Change
New Castle County	12,825	12,058	-767	-6.4%
Kent County	3,092	2,963	-129	-4.4%
Sussex County	3,587	3,519	-68	-1.9%
State	19,504	18,540	-964	-5.2%

Caseload Comparison - Fiscal Years 2014-2015 - Total Case Dispositions				
	2014	2015	Change	% Change
New Castle County	12,095	12,059	-36	-0.3%
Kent County	3,096	2,963	-133	-4.5%
Sussex County	3,472	3,332	-140	-4.2%
State	18,663	18,354	-309	-1.7%

* Report incorporates additional data made available since publication of the FY 2015 Annual Report.

Source: Court Administrator, Prothonotary's Offices, and Case Scheduling Office, Superior Court; Administrative Office of the Courts.

Superior Court Total 10-Year Caseload Trend



* Report incorporates additional data made available since publication of the FY 2015 Annual Report.



FAMILY COURT
State of Delaware

2015 Annual Report Statistical Information

FAMILY COURT

Caseload Comparison - Fiscal Years 2014-2015 - Adult Criminal Case Filings				
	2014	2015	Change	% Change
New Castle County	2,531	2,231	-300	-11.9%
Kent County	731	708	-23	-3.2%
Sussex County	655	669	14	2.1%
State	3,917	3,608	-309	-7.9%

Caseload Comparison - Fiscal Years 2014-2015 - Adult Criminal Case Dispositions				
	2014	2015	Change	% Change
New Castle County	2,343	2,307	-36	-1.5%
Kent County	655	702	47	7.2%
Sussex County	660	627	-33	-5.0%
State	3,658	3,636	-22	-0.6%

Source: Court Administrator, Family Court; Administrative Office of the Courts.

FAMILY COURT

Caseload Comparison - Fiscal Years 2014-2015 - Adult Criminal Filings

	VOP	PFA Contempt	All Other Charges	TOTAL
NCC	273 12.2%	205 9.2%	1753 78.6%	2231 100.0%
Kent	75 10.6%	79 11.2%	554 78.2%	708 100.0%
Sussex	93 13.9%	63 9.4%	513 76.7%	669 100.0%
Statewide	441 12.2%	347 9.6%	2820 78.2%	3608 100.0%

Caseload Comparison - Fiscal Years 2014-2015 - Adult Criminal Dispositions

	VOP	PFA Contempt	All Other Charges	TOTAL
NCC	293 12.7%	196 8.5%	1818 78.8%	2307 100.0%
Kent	74 10.5%	87 12.4%	541 77.1%	702 100.0%
Sussex	87 13.9%	60 9.6%	480 76.6%	627 100.0%
Statewide	454 12.5%	343 9.4%	2839 78.1%	3636 100.0%

*VOP- Violation of Probation.

Source: Court Administrator, Family Court;
Administrative Office of the Courts.

FAMILY COURT

Caseload Comparison - Fiscal Years 2014-2015 - Civil Case Filings				
	2014	2015	Change	% Change
New Castle County	19,110	19,688	578	3.0%
Kent County	7,792	8,283	491	6.3%
Sussex County	8,321	10,103	1,782	21.4%
State	35,223	38,074	2,851	8.1%

Caseload Comparison - Fiscal Years 2014-2015 - Civil Case Dispositions				
	2014	2015	Change	% Change
New Castle County	19,674	19,465	-209	-1.1%
Kent County	7,972	7,866	-106	-1.3%
Sussex County	8,918	9,598	680	7.6%
State	36,564	36,929	365	1.0%

Source: Court Administrator, Family Court; Administrative Office of the Courts.

FAMILY COURT

Caseload Breakdown - Fiscal Year 2015 - Civil Case Filings								
	Child Support/New Non-support		Child Support/Modifications		Child Support/Arrearages		Child Support/Verified Notice of Income Attachment	
New Castle County	4,022	20.4%	1,476	7.5%	2,715	13.8%	7	0.0%
Kent County	1,501	18.1%	708	8.5%	1,415	17.1%	3	0.0%
Sussex County	7,188	17.7%	656	6.5%	2,477	24.5%	1	0.0%
State	7,311	19.2%	2,840	7.5%	6,607	17.4%	11	0.0%
	Child Support/Determination of Parentage		Child Support/Revocation		Child Support/Registration of Foreign Order		Child Support/Notice of Admin. Adjustment	
New Castle County	264	1.3%	909	4.6%	215	1.1%	771	3.9%
Kent County	67	0.8%	381	4.6%	110	1.3%	404	4.9%
Sussex County	81	1.1%	334	3.3%	109	1.1%	1,072	10.6%
State	412	1.1%	1,624	4.3%	434	1.1%	2,247	5.9%
	Child Support/Other Support		Custody		Dependency/Neglect		Visitation	
New Castle County	19	0.1%	2,076	10.5%	169	0.9%	390	2.0%
Kent County	19	0.2%	813	9.8%	78	0.9%	128	1.5%
Sussex County	31	0.3%	835	8.3%	67	0.7%	140	1.4%
State	69	0.2%	3,724	9.8%	314	0.8%	658	1.7%
	Termination of Parental Rights		Civil Dissolution		Guardianship		Spousal Support	
New Castle County	101	0.5%	2	0.0%	1,030	5.2%	92	0.5%
Kent County	32	0.4%	0	0.0%	418	5.0%	32	0.4%
Sussex County	37	0.4%	-	0.0%	518	5.1%	11	0.1%
State	170	0.4%	2	0.0%	1,966	5.2%	135	0.4%
	Expungements (Juv .& Adult)		Imperiling Family Relationships		Protection from Abuse		Divorce/Annulment	
New Castle County	412	2.1%	27	0.1%	2,157	11.0%	1,928	9.8%
Kent County	139	1.7%	2	0.0%	941	11.4%	734	8.9%
Sussex County	174	1.7%	2	0.0%	713	7.1%	818	8.1%
State	725	1.9%	31	0.1%	3,811	10.0%	3,480	9.1%
	Rules to Show Cause/Other Civil Contempt		Minor to Marry		Miscellaneous Civil		Adoption	
New Castle County	557	2.8%	1	0.0%	247	1.3%	101	0.5%
Kent County	188	2.3%	1	0.0%	135	1.6%	34	0.4%
Sussex County	150	1.5%	-	0.0%	51	0.5%	38	0.4%
State	895	2.4%	2	0.0%	433	1.1%	173	0.5%
	Total							
New Castle County	19,688	100%						
Kent County	8,283	100%						
Sussex County	10,103	100%						
State	38,074	100%						

Source: Court Administrator, Family Court; Administrative Office of the Courts.

FAMILY COURT

Caseload Comparison - Fiscal Years 2014-2015 - Juvenile Delinquency Case Filings				
	2014	2015	Change	% Change
New Castle County	2,885	2,725	-160	-5.6%
Kent County	1,122	1,107	-15	-1.3%
Sussex County	1,096	1,167	71	6.5%
State	5,103	4,999	-104	-2.0%

Caseload Comparison - Fiscal Years 2014-2015 - Juvenile Delinquency Case Dispositions				
	2014	2015	Change	% Change
New Castle County	2,900	2,938	38	1.3%
Kent County	1,249	1,235	-14	-1.1%
Sussex County	1,145	1,146	1	0.1%
State	5,294	5,319	25	0.5%

Source: Court Administrator, Family Court; Administrative Office of the Courts.

FAMILY COURT

Caseload Breakdowns - Fiscal Year 2015 - Juvenile Delinquency Case Filings						
	Felony		Misdemeanor		Traffic	
New Castle County	563	20.7%	1,750	64.2%	127	4.7%
Kent County	174	15.7%	763	68.9%	81	7.3%
Sussex County	203	17.4%	752	64.4%	125	10.7%
State	940	18.8%	3,265	65.3%	333	6.7%
	VOP				Total	
New Castle County	285	10.5%			2,725	100%
Kent County	89	8.0%			1,107	100%
Sussex County	87	7.5%			1,167	100%
State	461	9.2%			4,999	100%

Caseload Breakdowns - Fiscal Year 2015 - Juvenile Delinquency Case Dispositions						
	Felony		Misdemeanor		Traffic	
New Castle County	511	17.4%	1,987	67.6%	161	5.5%
Kent County	147	11.9%	916	74.2%	82	6.6%
Sussex County	177	15.4%	769	67.1%	124	10.8%
State	835	15.7%	3,672	69.0%	367	6.9%
	VOP				Total	
New Castle County	279	9.5%			2,938	100%
Kent County	90	7.3%			1,235	100%
Sussex County	76	6.6%			1,146	100%
State	445	8.4%			5,319	100%

VOP = Violations of Probation.

Source: Court Administrator, Family Court; Administrative Office of the Courts.

FAMILY COURT

Caseload Comparison - Fiscal Years 2014-2015 - Mediation Hearings Scheduled				
	2014	2015	Change	% Change
New Castle County	6,692	6,622	-70	-1.1%
Kent County	2,428	2,750	322	13.3%
Sussex County	3,402	3,226	-176	-5.2%
State	12,522	12,598	76	0.6%

Caseload Comparison - Fiscal Years 2014-2015 - Mediation Dispositions				
	2014	2015	Change	% Change
New Castle County	4,256	4,040	-216	-5.1%
Kent County	1,510	1,676	166	11.0%
Sussex County	2,128	2,013	-115	-5.4%
State	7,894	7,729	-165	-2.1%

Mediation Explanatory Notes Fiscal Year 2015

1. Mediation is the process prior to adjudication in which a trained mediator attempts to assist the parties in reaching an agreement. If the parties are unable to reach an agreement, the matter is scheduled to be heard before a commissioner or judge.
2. Custody, support, visitation, paternity, guardianship, imperiling family relations, and rule to show cause filings are scheduled for mediation unless bypass mediation rules apply as indicated in 13 Del. C. § 711A and 13 Del. C. § 728A; Family Court Procedures OCI-914 and OCI-902.

Note: Mediation data was reported as Arbitration data in some previous fiscal years.

Source: Court Administrator, Family Court; Administrative Office of the Courts.

FAMILY COURT

Caseload Comparison - Fiscal Years 2014-2015 - Total Case Filings				
	2014	2015	Change	% Change
New Castle County	24,526	24,644	118	0.5%
Kent County	9,645	10,098	453	4.7%
Sussex County	10,072	11,939	1,867	18.5%
State	44,243	46,681	2,438	5.5%

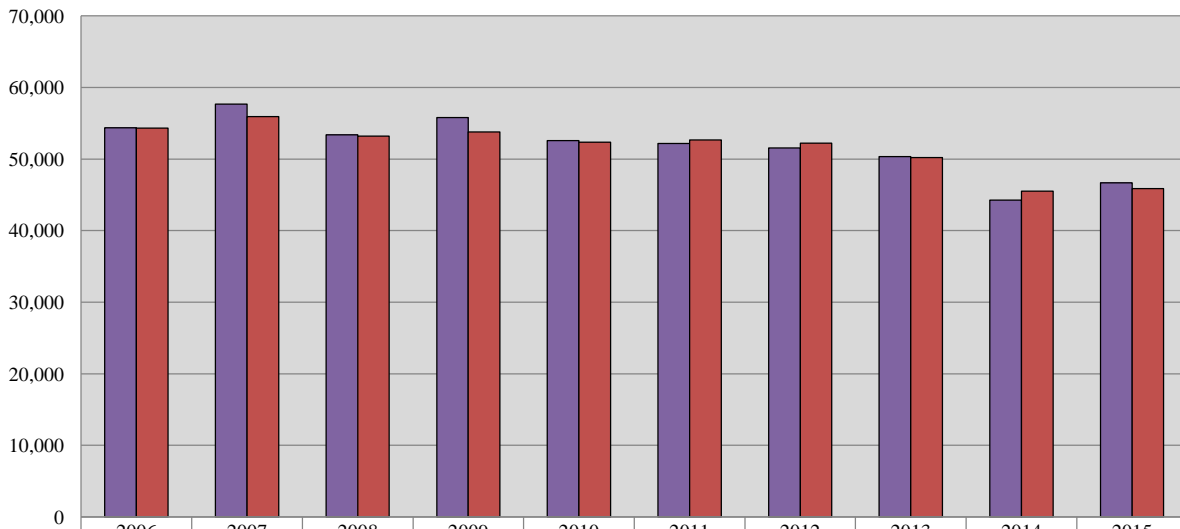
Caseload Comparison - Fiscal Years 2014-2015 - Total Case Dispositions				
	2014	2015	Change	% Change
New Castle County	24,917	24,710	-207	-0.8%
Kent County	9,876	9,803	-73	-0.7%
Sussex County	10,723	11,371	648	6.0%
State	45,516	45,884	368	0.8%

Total Caseload Explanatory Notes - Fiscal Year 2015

1. A civil filing is defined as one petition or one single civil incident filed with Family Court. In a divorce matter, although the petition may contain multiple ancillary matters to the divorce, it is counted as one filing.
2. A criminal or delinquency filing is defined as one incident filed against one individual or defendant. A single criminal or juvenile delinquency filing may be comprised of a single charge, or of multiple charges relating to a single incident.
3. Automatic Expungements/Pardons resulting in Automatic Juvenile Expungements are counted as filings in this report due to the amount of staff effort to process them. Although there is not a disposition from a Hearing Officer for Automatic Expungements, the directive letter from SBI is acted upon by our staff. Therefore, the resolution of these types of filings are added to the same month they are received in the Dispositions section of this report.

Source: Court Administrator, Family Court; Administrative Office of the Courts.

Family Court 10-Year Total Caseload Trend



	2006	2007	2008	2009	2010	2011	2012	2013	2014	2015
■ Filings	54361	57672	53,366	55,797	52,580	52,189	51,568	50,364	44,243	46,681
■ Dispositions	54313	55920	53,211	53,772	52,353	52,661	52,213	50,191	45,516	45,884

Fiscal Year

Note: The number of filings for Fiscal Year 2009 was amended.



COURT OF COMMON PLEAS
State of Delaware

2015 Annual Report Statistical Information

COURT OF COMMON PLEAS

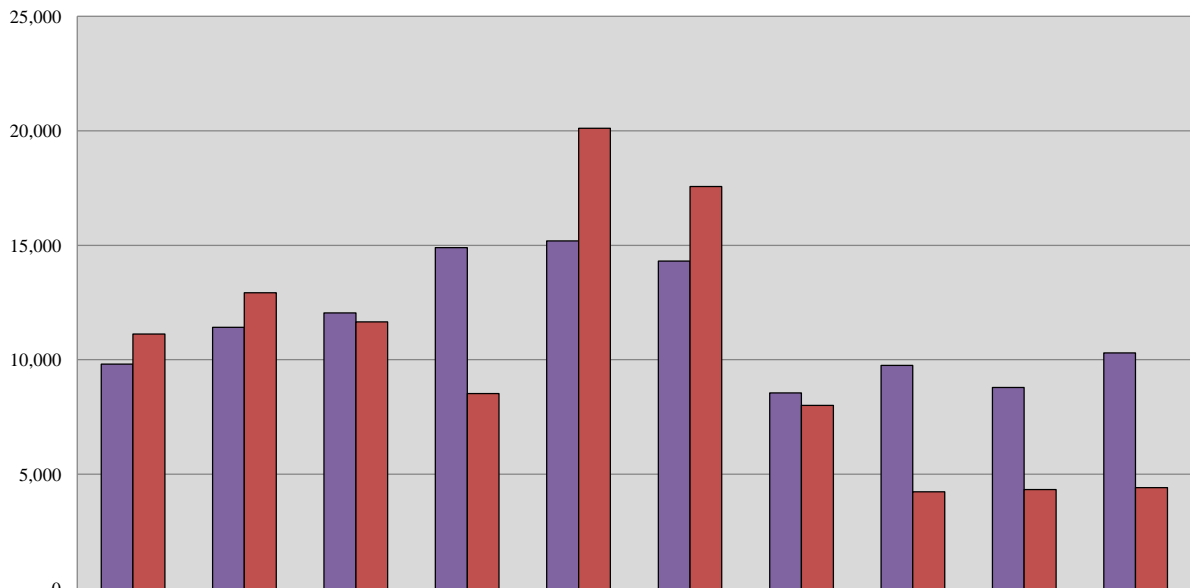
Caseload Summary - Fiscal Years 2014-2015 - Civil Case Filings				
	2014	2015	Change	% Change
New Castle County	5,312	6,169	857	16.1%
Kent County	1,802	2,014	212	11.8%
Sussex County	1,673	2,112	433	25.8%
State	8,787	10,295	1,502	17.1%

Caseload Summary - Fiscal Years 2014-2015 - Civil Case Dispositions				
	2014	2015	Change	% Change
New Castle County	2,419	2,602	183	7.6%
Kent County	909	748	-161	-17.7%
Sussex County	999	1,065	66	6.6%
State	4,327	4,415	88	2.0%

Caseload Breakdowns - Fiscal Year 2015 - Civil Case Filings						
	Complaints		Civil Judgments, Name Changes & Appeals		Total	
New Castle County	3,987	64.6%	2,182	35.4%	6,169	
Kent County	1,196	59.4%	818	40.6%	2,014	
Sussex County	1,324	62.7%	788	37.3%	2,112	
State	6,507	63.2%	3,788	36.8%	10,295	100%

Source: Court Administrator, Court of Common Pleas; Administrative Office of the Courts.

Court of Common Pleas 10-Year Civil Caseload Trend



	2006	2007	2008	2009	2010	2011	2012	2013	2014	2015
■ Filings	9,805	11,420	12,045	14,894	15,191	14,314	8,552	9,748	8,793	10,295
■ Dispositions	11,127	12,921	11,657	8,526	20,111	17,573	8,013	4,229	4,327	4,415

Fiscal Year

COURT OF COMMON PLEAS

Caseload Summary - Fiscal Years 2014-2015 - Criminal Misdemeanor Case Filings*

	2014	2015	Change	% Change
New Castle County	53,178	45,885	-7,293	-13.7%
Kent County	29,763	27,824	-1,939	-6.5%
Sussex County	27,130	29,467	2,337	8.6%
State	110,071	103,176	-6,895	-6.3%

Caseload Summary - Fiscal Years 2014-2015 - Criminal Misdemeanor Case Dispositions

	2014	2015	Change	% Change
New Castle County	44,121	40,192	-3,929	-8.9%
Kent County	22,166	23,084	918	4.1%
Sussex County	22,220	24,090	1,870	8.4%
State	88,507	87,366	-1,141	-1.3%

Caseload Summary - Fiscal Years 2014-2015 - Criminal Preliminary Hearing Case Filings

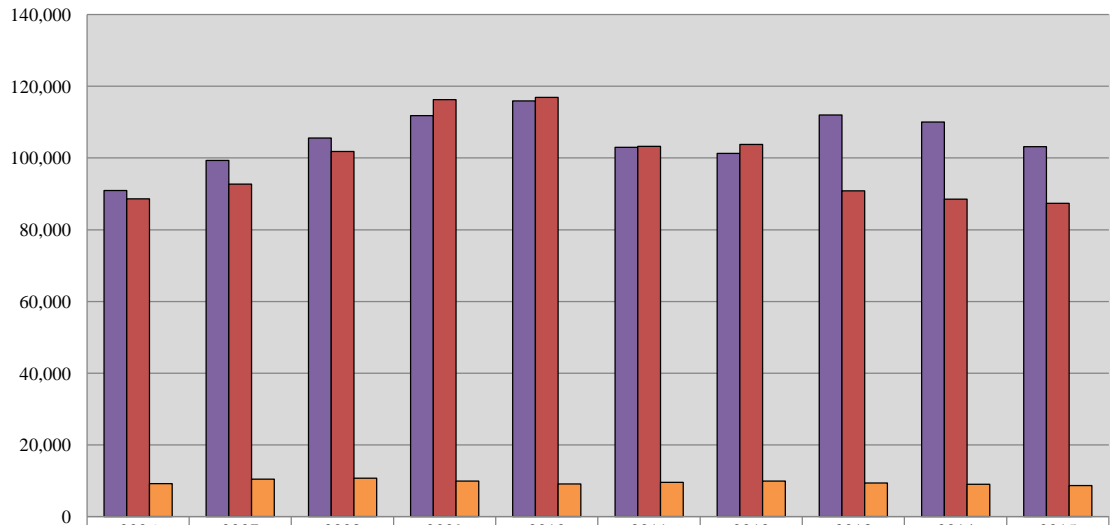
	2014	2015	Change	% Change
New Castle County	4,746	4,389	-357	-7.5%
Kent County	1,972	1,936	-36	-1.8%
Sussex County	2,293	2,296	3	0.1%
State	9,011	8,621	-390	-4.3%

*Includes Contempt of Court cases.

Source: Court Administrator, Court of Common Pleas; Administrative Office of the Courts.

	2006	2007	2008	2009	2010	2011	2012	2013	2014	2015
Misdemeanor Filings	90,964	99,345	105,607	111,797	115,882	102,939	101,284	112,004	110,071	103,176
Misdemeanor Dispositions	88,577	92,691	101,823	116,278	116,926	103,209	103,802	90,873	88,507	87,366
Preliminary Hearings	9,165	10,413	10,720	9,940	9,066	9,590	9,917	9,398	9,011	8,621

Court of Common Pleas 10-Year Criminal Caseload Trend



	2006	2007	2008	2009	2010	2011	2012	2013	2014	2015
■ Misdemeanor Filings	90,964	99,345	105,607	111,797	115,882	102,939	101,284	112,004	110,071	103,176
■ Misdemeanor Dispositions	88,577	92,691	101,823	116,278	116,926	103,209	103,802	90,873	88,507	87,366
■ Preliminary Hearings	9,165	10,413	10,720	9,940	9,066	9,590	9,917	9,398	9,011	8,621

Fiscal Year

COURT OF COMMON PLEAS

Caseload Summary - Fiscal Years 2014-2015 - Criminal Misdemeanor Case Filings*

	2014	2015	Change	% Change
New Castle County	53,178	45,885	-7,293	-13.7%
Kent County	29,763	27,824	-1,939	-6.5%
Sussex County	27,130	29,467	2,337	8.6%
State	110,071	103,176	-6,895	-6.3%

Caseload Summary - Fiscal Years 2014-2015 - Criminal Misdemeanor Case Dispositions

	2014	2015	Change	% Change
New Castle County	44,121	40,192	-3,929	-8.9%
Kent County	22,166	23,084	918	4.1%
Sussex County	22,220	24,090	1,870	8.4%
State	88,507	87,366	-1,141	-1.3%

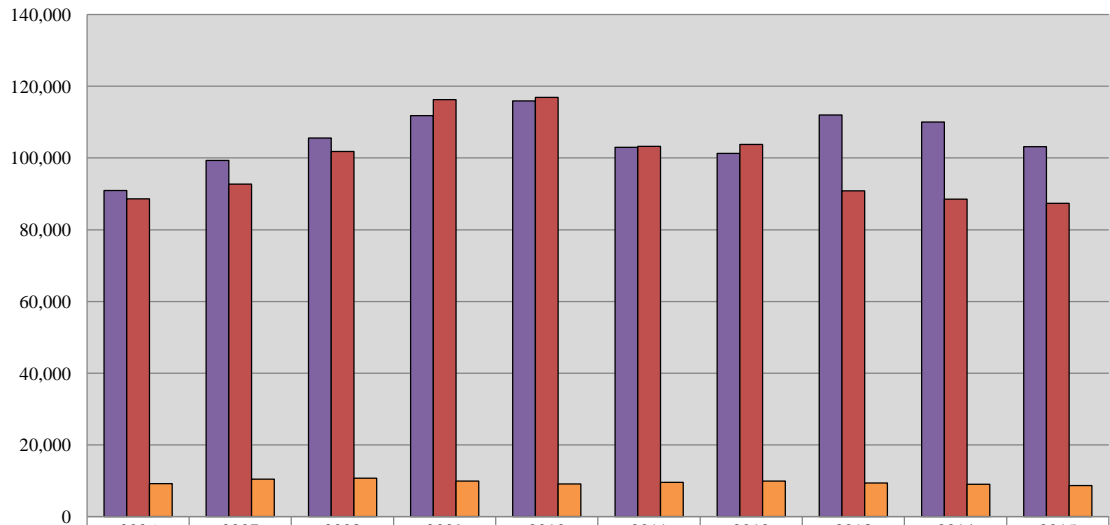
Caseload Summary - Fiscal Years 2014-2015 - Criminal Preliminary Hearing Case Filings

	2014	2015	Change	% Change
New Castle County	4,746	4,389	-357	-7.5%
Kent County	1,972	1,936	-36	-1.8%
Sussex County	2,293	2,296	3	0.1%
State	9,011	8,621	-390	-4.3%

*Includes Contempt of Court cases.

Source: Court Administrator, Court of Common Pleas; Administrative Office of the Courts.

Court of Common Pleas 10-Year Criminal Caseload Trend



	2006	2007	2008	2009	2010	2011	2012	2013	2014	2015
■ Misdemeanor Filings	90,964	99,345	105,607	111,797	115,882	102,939	101,284	112,004	110,071	103,176
■ Misdemeanor Dispositions	88,577	92,691	101,823	116,278	116,926	103,209	103,802	90,873	88,507	87,366
■ Preliminary Hearings	9,165	10,413	10,720	9,940	9,066	9,590	9,917	9,398	9,011	8,621

Fiscal Year

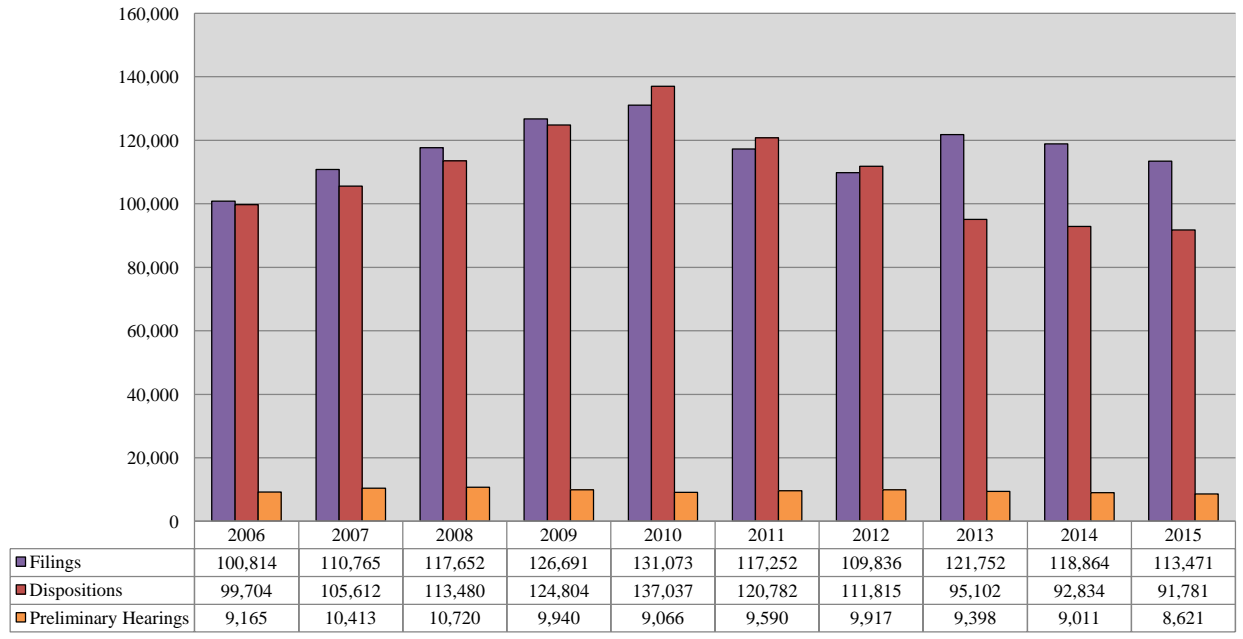
COURT OF COMMON PLEAS

Caseload Summary - Fiscal Years 2014-2015 - Total Criminal Misdemeanor and Civil Case Filings				
	2014	2015	Change	% Change
New Castle County	58,490	52,054	-6,436	-11.0%
Kent County	31,565	29,838	-1,727	-5.5%
Sussex County	28,809	31,579	2,770	9.6%
State	118,864	113,471	-5,393	-4.5%

Caseload Summary - Fiscal Years 2014-2015 - Total Criminal Misdemeanor and Civil Case Dispositions				
	2014	2015	Change	% Change
New Castle County	46,540	42,794	-3,746	-8.0%
Kent County	23,075	23,832	757	3.3%
Sussex County	23,219	25,155	1,936	8.3%
State	92,834	91,781	-1,053	-1.1%

Source: Court Administrator, Court of Common Pleas; Administrative Office of the Courts.

Court of Common Pleas 10-Year Total Caseload Trend (Civil & Criminal)



Fiscal Year



JUSTICE OF THE PEACE COURT
State of Delaware

2015 Annual Report Statistical Information

JUSTICE OF THE PEACE COURT

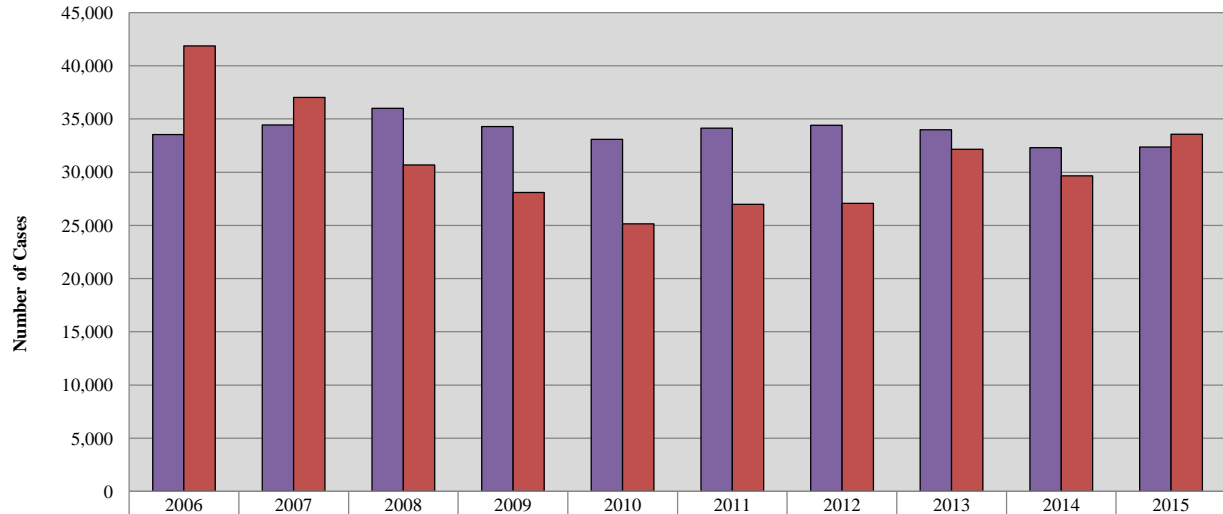
Caseload Summary - Fiscal Year 2015 - Civil Cases		
	Filings	Dispositions
New Castle County		
Court 9	2,034	2,200
Court 13	15,511	18,514
Kent County		
Court 16	7,666	6,725
Sussex County		
Court 17	7,170	6,139
State	32,381	33,578

Caseload Comparison - Fiscal Years 2014-2015 - Civil Case Filings				
	2014	2015	Change	% Change
New Castle County				
Court 9	1,591	2,034	443	27.8%
Court 13	16,560	15,511	-1,049	-6.3%
Kent County				
Court 16	7,433	7,666	233	3.1%
Sussex County				
Court 17	6,737	7,170	433	6.4%
State	32,321	32,381	60	0.2%

Caseload Comparison - Fiscal Years 2014-2015 - Civil Case Dispositions				
	2014	2015	Change	% Change
New Castle County				
Court 9	1,345	2,200	855	63.6%
Court 13	14,408	18,514	4,106	28.5%
Kent County				
Court 16	8,032	6,725	-1,307	-16.3%
Sussex County				
Court 17	5,872	6,139	267	4.5%
State	29,657	33,578	3,921	13.2%

Source: Chief Magistrate's Office, Justice of the Peace Court; Administrative Office of the Courts.

JP Court 10-Year Civil Caseload Trend



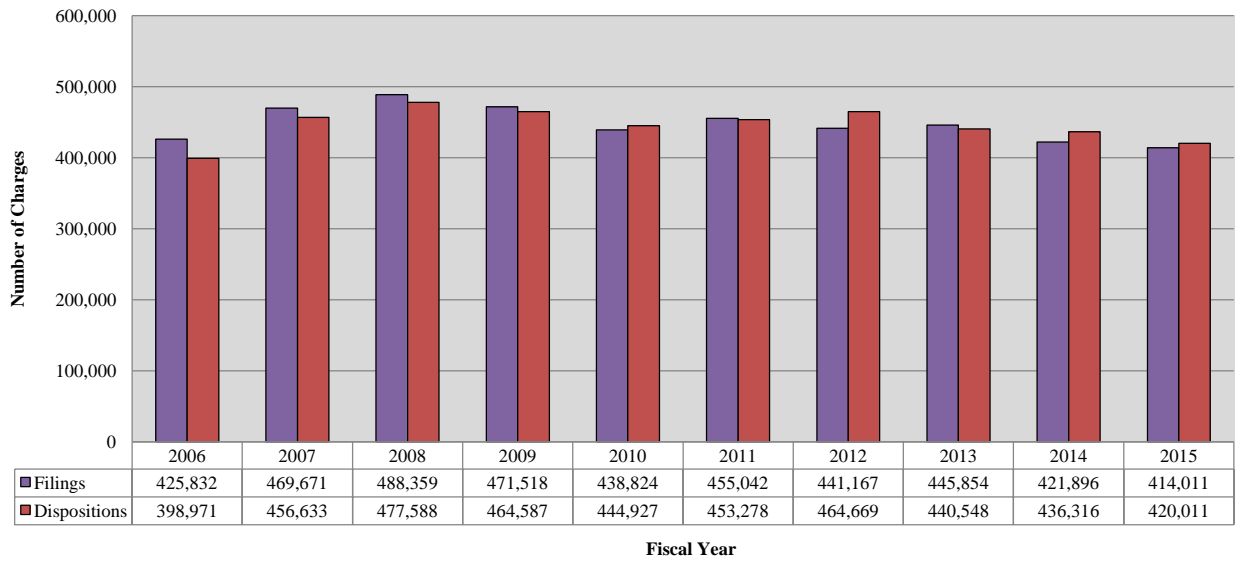
■ Filings	33,552	34,453	36,016	34,297	33,088	34,127	34,416	33,981	32,321	32,381
■ Dispositions	41,877	37,033	30,690	28,108	25,134	26,983	27,071	32,144	29,657	33,578

Fiscal Year

Caseload Breakdowns - Fiscal Year 2015 - Civil Case Filings							
	Complaints		Landlord/Tenant		Total		
New Castle County							
Court 9	1,582	77.8%	452	22.2%	2,034	100%	
Court 13	3,827	24.7%	11,684	75.3%	15,511	100%	
Kent County							
Court 16	4,037	52.7%	3,629	47.3%	7,666	100%	
Sussex County							
Court 17	3,784	52.8%	3,386	47.2%	7,170	100%	
State	13,230	40.9%	19,151	59.1%	32,381	100%	

Source: Chief Magistrate's Office, Justice of the Peace Court; Administrative Office of the Courts.

JP Court 10-Year Criminal and Traffic Caseload Trend*



*Criminal filings and disposition information is by charge.

JUSTICE OF THE PEACE COURT

Caseload Breakdowns - Fiscal Year 2015 - Criminal and Traffic Filings (Defendants)										
	Title 7 - Fish/Game		Title 11 - Criminal		Title 21 - Traffic		Miscellaneous		Total	
New Castle County										
Court 9	122	3.5%	226	6.4%	3,026	85.8%	151	4.3%	3,525	100%
Court 10	99	3.3%	119	3.9%	1,338	44.2%	1,472	48.6%	3,028	100%
Court 11	82	0.2%	8,072	20.7%	28,265	72.5%	2,555	6.6%	38,974	100%
Court 20	53	0.7%	2,541	32.2%	4,087	51.7%	1,221	15.5%	7,902	100%
Kent County										
Court 6	29	0.5%	259	4.7%	5,016	91.8%	159	2.9%	5,463	100%
Court 7	153	0.8%	4,140	20.9%	13,943	70.4%	1,560	7.9%	19,796	100%
Court 8	2	0.1%	106	4.1%	2,373	91.6%	110	4.2%	2,591	100%
Sussex County										
Court 1	95	2.7%	147	4.1%	2,927	81.9%	407	11.4%	3,576	100%
Court 2	120	0.8%	8,663	55.0%	5,381	34.2%	1,585	10.1%	15,749	100%
Court 3	315	2.8%	3,174	28.5%	6,166	55.4%	1,465	13.2%	11,120	100%
Court 4	10	0.1%	399	5.0%	7,287	91.5%	271	3.4%	7,967	100%
Court 14	0	0%	68	4.0%	1,557	91.4%	79	4.6%	1,704	100%
State w/o VAC	1,080	0.9%	27,914	23.0%	81,366	67.0%	11,035	9.1%	121,395	100%
VAC	1,393	1.1%	0	0%	127,249	98.5%	585	0.5%	129,227	100%
State with VAC	2,473	1.0%	27,914	11.1%	208,615	83.2%	11,620	4.6%	250,622	100%

VAC = Voluntary Assessment Center.

Source: Chief Magistrate's Office, Justice of the Peace Court; Administrative Office of the Courts.

JUSTICE OF THE PEACE COURT

Caseload Breakdowns - Fiscal Year 2015 - Criminal and Traffic Filings (Charges)										
	Title 7 - Fish/Game		Title 11 - Criminal		Title 21 - Traffic		Miscellaneous		Total	
New Castle County										
Court 9	204	3.1%	380	5.7%	5,743	86.7%	300	4.5%	6,627	100%
Court 10	107	2.8%	153	4.0%	1,905	49.8%	1,663	43.4%	3,828	100%
Court 11	167	0.2%	17,546	20.2%	63,460	73.2%	5,486	6.3%	86,659	100%
Court 20	64	0.4%	5,105	30.8%	9,059	54.6%	2,371	14.3%	16,599	100%
Kent County										
Court 6	58	0.5%	412	3.7%	10,452	93.0%	316	2.8%	11,238	100%
Court 7	188	0.4%	10,506	24.2%	29,276	67.5%	3,383	7.8%	43,353	100%
Court 8	4	0.1%	174	3.3%	4,929	93.7%	155	2.9%	5,262	100%
Sussex County										
Court 1	133	2.0%	232	3.6%	5,599	86.3%	525	8.1%	6,489	100%
Court 2	203	0.5%	23,156	55.8%	12,700	30.6%	5,458	13.1%	41,517	100%
Court 3	636	2.0%	11,663	37.2%	14,958	47.8%	4,060	13.0%	31,317	100%
Court 4	17	0.1%	893	5.2%	15,766	91.6%	536	3.1%	17,212	100%
Court 14	1	0.0%	155	3.6%	4,027	92.9%	151	3.5%	4,334	100%
State w/o VAC	1,782	0.6%	70,375	25.6%	177,874	64.8%	24,404	8.9%	274,435	100%
VAC	1,667	1.2%	0	0%	137,277	98.4%	632	0.5%	139,576	100%
State with VAC	3,449	0.8%	70,375	17.0%	315,151	76.1%	25,036	6.0%	414,011	100%

VAC = Voluntary Assessment Center.

Source: Chief Magistrate's Office, Justice of the Peace Court; Administrative Office of the Courts.

JUSTICE OF THE PEACE COURT

Caseload Comparison - Fiscal Years 2014-2015 - Criminal and Traffic Filings (Defendants)				
	2014	2015	Change	% Change
New Castle County				
Court 9	3,674	3,525	-149	-4.1%
Court 10	3,352	3,028	-324	-9.7%
Court 11	40,780	38,974	-1,806	-4.4%
Court 20	10,007	7,902	-2,105	-21.0%
Kent County				
Court 6	4,951	5,463	512	10.3%
Court 7	20,146	19,796	-350	-1.7%
Court 8	2,905	2,591	-314	-10.8%
Sussex County				
Court 1	3,370	3,576	206	6.1%
Court 2	15,778	15,749	-29	-0.2%
Court 3	10,508	11,120	612	5.8%
Court 4	8,177	7,967	-210	-2.6%
Court 14	1,740	1,704	-36	-2.1%
State Without VAC	125,388	121,395	-3,993	-3.2%
VAC	125,753	129,227	3,474	2.8%
State with VAC	251,141	250,622	-519	-0.2%

VAC = Voluntary Assessment Center.

Source: Chief Magistrate's Office, Justice of the Peace Court; Administrative Office of the Courts.

JUSTICE OF THE PEACE COURT

Caseload Comparison - Fiscal Years 2014-2015 - Criminal and Traffic Filings (Charges)				
	2014	2015	Change	% Change
New Castle County				
Court 9	6,869	6,627	-242	-3.5%
Court 10	4,150	3,828	-322	-7.8%
Court 11	92,247	86,659	-5,588	-6.1%
Court 20	20,880	16,599	-4,281	-20.5%
Kent County				
Court 6	10,400	11,238	838	8.1%
Court 7	43,532	43,353	-179	-0.4%
Court 8	6,009	5,262	-747	-12.4%
Sussex County				
Court 1	6,422	6,489	67	1.0%
Court 2	41,693	41,517	-176	-0.4%
Court 3	30,569	31,317	748	2.4%
Court 4	17,707	17,212	-495	-2.8%
Court 14	4,549	4,334	-215	-4.7%
State Without VAC	285,027	274,435	-10,592	-3.7%
VAC	136,869	139,576	2,707	2.0%
State with VAC	421,896	414,011	-7,885	-1.9%

VAC = Voluntary Assessment Center.

Source: Chief Magistrate's Office, Justice of the Peace Court; Administrative Office of the Courts.

JUSTICE OF THE PEACE COURT

Court Rankings - Fiscal Years 2014-2015 - Total Cases Filed* (Charges)				
2014 Rank w/o VAC	2015 Rank w/o VAC	2015 Total Filings		2015 % of Total w/o VAC
1	1	Court 11	86,659	28.2%
2	2	Court 7	43,353	14.1%
3	3	Court 2	41,517	13.5%
4	4	Court 3	31,317	10.2%
6	5	Court 4	17,212	5.6%
5	6	Court 20	16,599	5.4%
7	7	Court 13	15,511	5.1%
8	8	Court 6	11,238	3.7%
9	9	Court 9	8,661	2.8%
10	10	Court 16	7,666	2.5%
11	11	Court 17	7,170	2.3%
12	12	Court 1	6,489	2.1%
13	13	Court 8	5,262	1.7%
14	14	Court 14	4,334	1.4%
15	15	Court 10	3,828	1.2%
2015 State w/o VAC			306,816	100%
2015 VAC			139,576	
2015 State w/ VAC			446,392	

*Includes civil, criminal, and traffic filings.

VAC = Voluntary Assessment Center.

Source: Chief Magistrate's Office, Justice of the Peace Court; Administrative Office of the Courts.

Court Rankings - Fiscal Years 2014-2015 - Total Case Filings (Defendants)				
2014 Rank w/o VAC	2015 Rank w/o VAC	2015 Total Filings		2015 % of Total w/o VAC
	1	Court 11	38,974	25.3%
	2	Court 7	19,796	12.9%
	3	Court 2	15,749	10.2%
	4	Court 13	15,511	10.1%
	5	Court 3	11,120	7.2%
	6	Court 4	7,967	5.2%
	7	Court 20	7,902	5.1%
	8	Court 16	7,666	5.0%
	9	Court 17	7,170	4.7%
	10	Court 9	5,559	3.6%
	11	Court 6	5,463	3.6%
	12	Court 1	3,576	2.3%
	13	Court 10	3,028	2.0%
	14	Court 8	2,591	2.0%
	15	Court 14	1,704	0.6%
2015 State w/o VAC			153,776	100%
2015 VAC			129,227	
2015 State w/ VAC			283,003	

VAC = Voluntary Assessment Center.

Source: Chief Magistrate's Office, Justice of the Peace Court; Administrative Office of the Courts.

JUSTICE OF THE PEACE COURT

Caseload Comparison - Fiscal Years 2014-2015 - Total Cases Filed (Charges)				
	2014	2015	Change	% Change
Criminal & Traffic	421,896	414,011	-7,885	-1.9%
Civil	32,321	32,381	60	0.2%
Total	454,217	446,392	-7,825	-1.7%

Caseload Comparison - Fiscal Years 2014-2015 - Total Cases Disposed (Charges)				
	2014	2015	Change	% Change
Criminal & Traffic	436,316	420,011	-16,305	-3.7%
Civil	29,657	33,578	3,921	13.2%
Total	465,973	453,589	-12,384	-2.7%

Source: Chief Magistrate's Office, Justice of the Peace Court; Administrative Office of the Courts.

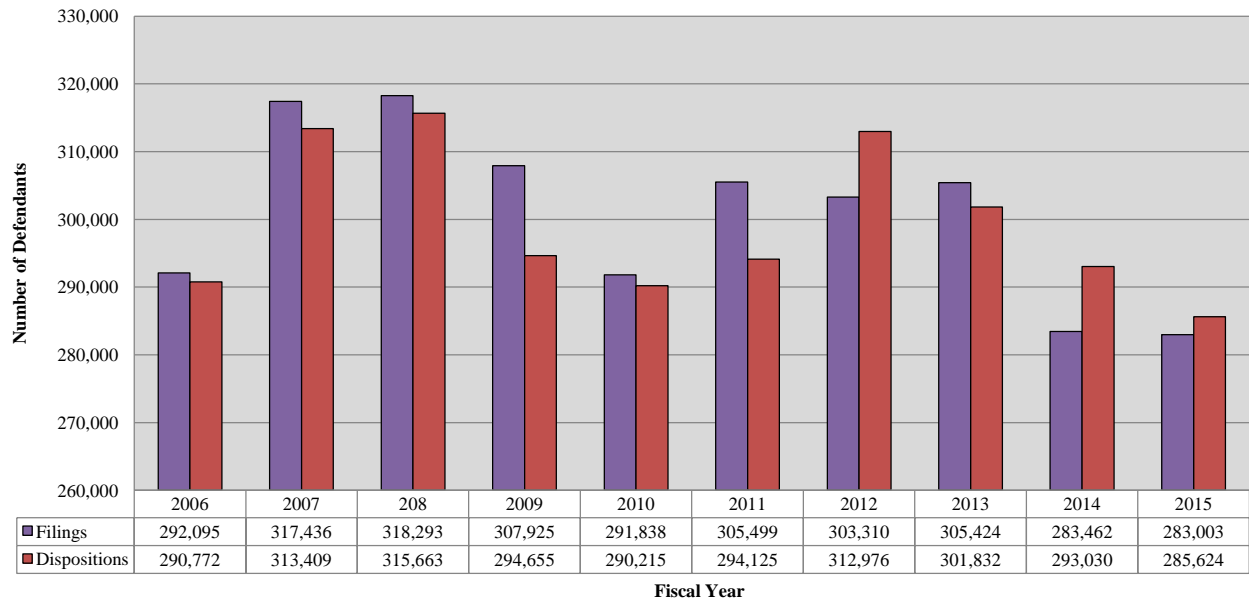
JUSTICE OF THE PEACE COURT

Caseload Comparison - Fiscal Years 2014-2015 - Total Case Filings (Defendants)				
	2014	2015	Change	% Change
Criminal & Traffic	271,443	250,622	-20,821	-7.7%
Civil	33,981	32,381	-1,600	-4.7%
Total	305,424	283,003	-22,421	-7.3%

Caseload Comparison - Fiscal Years 2014-2015 - Total Cases Dispositions (Defendants)				
	2014	2015	Change	% Change
Criminal & Traffic	269,688	252,046	-17,642	-6.5%
Civil	32,144	33,578	1,434	4.5%
Total	301,832	285,624	-16,208	-5.4%

Source: Chief Magistrate's Office, Justice of the Peace Court; Administrative Office of the Courts.

JP Court 10-Year Total Caseload Trend* (Civil, Criminal & Traffic)



*Criminal filings and disposition information is by defendant.



ALDERMAN'S COURTS
State of Delaware

2015 Annual Report Statistical Information

ALDERMAN'S COURTS*

Caseload Comparison - Fiscal Years 2014-2015 - Total Filings				
	2014	2015	Change	% Change
New Castle County				
Newark	14,113	12,515	-1,598	-11.3%
Newport	6,409	6,843	434	6.8%
Sussex County				
Bethany Beach	2,204	1,761	-443	-20.1%
Dewey Beach	553	520	-33	-6.0%
Laurel	3,933	3,210	-723	-18.4%
Rehoboth Beach	1,855	2,102	247	13.3%
State	29,067	26,951	-2,116	-7.3%

Caseload Comparison - Fiscal Years 2014-2015 - Total Dispositions				
	2014	2015	Change	% Change
New Castle County				
Newark	16,821	13,631	-3,190	-19.0%
Newport	6,409	6,843	434	6.8%
Sussex County				
Bethany Beach	2,204	1,761	-443	-20.1%
Dewey Beach	739	866	127	17.2%
Laurel	3,830	3,073	-757	-19.8%
Rehoboth Beach	1,670	2,227	557	33.4%
State	31,673	28,401	-3,272	-10.3%

The unit of count for criminal and traffic cases is the charge. For example, a defendant with three charges disposed of is counted as three dispositions.

*Alderman's Courts are not part of the Delaware court system. They are independent entities within their respective Municipalities. However, cases may be transferred or appealed to a State court.

Source: Alderman's Courts; Administrative Office of the Courts.