



SUPERIOR COURT
State of Delaware

2013 Annual Report Statistical Information

SUPERIOR COURT

Caseload Comparison - Fiscal Years 2012-2013 - Civil Case Filings				
	2012	2013	Change	% Change
New Castle County	8,988	8,737	-251	-2.9%
Kent County	1,612	1,378	-234	-17.0%
Sussex County	1,830	1,611	-219	-13.6%
State	12,430	11,726	-704	-6.0%

Caseload Comparison - Fiscal Years 2012-2013 - Civil Case Dispositions				
	2012	2013	Change	% Change
New Castle County	10,263	8,438	-1,825	-21.6%
Kent County	2,075	1,348	-727	-53.9%
Sussex County	2,084	1,833	-251	-13.7%
State	14,422	11,619	-2,803	-24.1%

Source: Prothonotary's Offices, Superior Court; Administrative Office of the Courts.

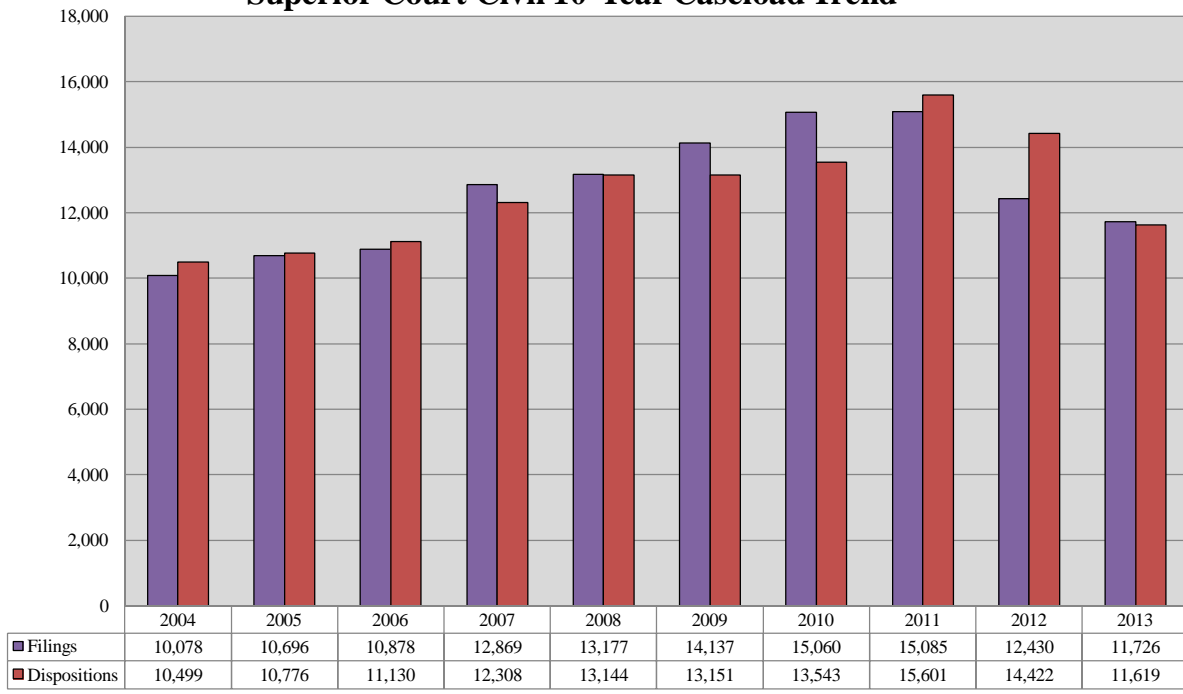
SUPERIOR COURT

Caseload Breakdowns - Fiscal Year 2013 - Civil Case Filings						
	Complaints		Mechanic's Liens and Mortgages		Appeals	
New Castle County	3,664	41.9%	1,134	13.0%	152	1.7%
Kent County	502	36.4%	408	29.6%	40	2.9%
Sussex County	366	22.7%	548	34.0%	50	3.1%
State	4,532	38.6%	2,090	17.8%	242	2.1%
	Involuntary Commitments		Miscellaneous		Total	
New Castle County	1,513	17.3%	2,274	26.0%	8,737	100%
Kent County	109	7.9%	319	23.1%	1,378	100%
Sussex County	12	0.7%	635	39.4%	1,611	100%
State	1,634	13.9%	3,228	27.5%	11,726	100%

Caseload Breakdowns - Fiscal Year 2013 - Civil Case Dispositions						
	Complaints		Mechanic's Liens and Mortgages		Appeals	
New Castle County	3,250	38.5%	1,276	15.1%	152	1.8%
Kent County	502	37.2%	384	28.5%	43	3.2%
Sussex County	435	23.7%	634	34.6%	75	4.1%
State	4,187	36.0%	2,294	19.7%	270	2.3%
	Involuntary Commitments		Miscellaneous		Total	
New Castle County	1,496	17.7%	2,264	26.8%	8,438	100%
Kent County	102	7.6%	317	23.5%	1,348	100%
Sussex County	43	2.3%	646	35.2%	1,833	100%
State	1,641	14.1%	3,227	27.8%	11,619	100%

Source: Prothonotary's Offices, Superior Court; Administrative Office of the Courts.

Superior Court Civil 10-Year Caseload Trend



Fiscal Year

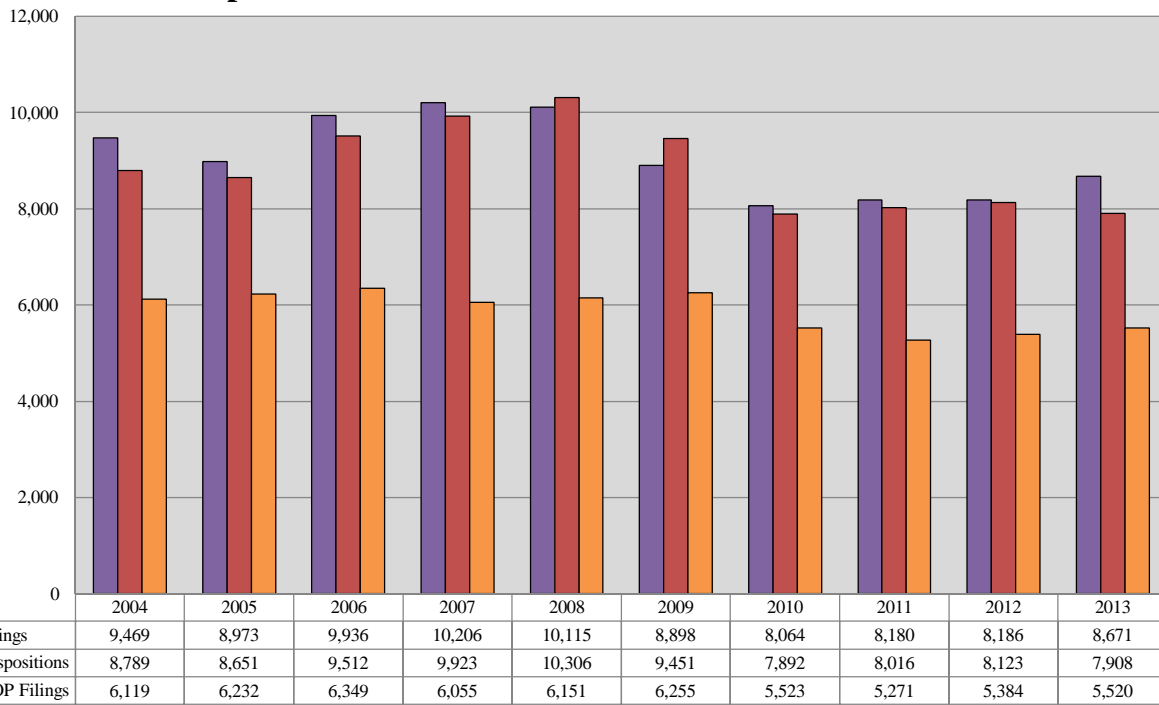
SUPERIOR COURT

Caseload Comparison - Fiscal Years 2012-2013 - Criminal Case Filings				
	2012	2013	Change	% Change
New Castle County	4,242	4,411	169	3.8%
Kent County	1,683	1,760	77	4.4%
Sussex County	2,261	2,500	239	9.6%
State	8,186	8,671	485	5.6%

Caseload Comparison - Fiscal Years 2012-2013 - Criminal Case Dispositions				
	2012	2013	Change	% Change
New Castle County	4,217	4,104	-113	-2.8%
Kent County	1,769	1,652	-117	-7.1%
Sussex County	2,137	2,152	15	0.7%
State	8,123	7,908	-215	-2.7%

Source: Court Administrator and Case Scheduling Office, Superior Court; Administrative Office of the Courts.

Superior Court Criminal 10-Year Caseload Trend



Fiscal Year

VOP = Violation of Probation.

SUPERIOR COURT

Caseload Breakdowns- Fiscal Year 2013 - Criminal Filings

	Indictment		Rule 9 Warrant		Information		Other*		Total
New Castle County	3,182	72.1%	178	4.0%	1,014	23.0%	37	0.8%	4,411
Kent County	1,361	77.3%	21	1.2%	360	20.5%	18	1.0%	1,760
Sussex County	951	38.0%	229	9.2%	1,320	52.8%	0	0%	2,500
State	5,494	63.4%	428	4.9%	2,694	31.1%	55	0.6%	8,671

Caseload Breakdowns- Fiscal Year 2013 - Criminal Dispositions

	Trial		Guilty Plea**		Nolle Prosequi		Remand/Transfer	
New Castle County	124	3.0%	2,876	70.1%	510	12.4%	1	0.0%
Kent County	26	1.6%	1,104	66.8%	255	15.4%	5	0.3%
Sussex County	15	0.7%	1,662	77.2%	268	12.5%	2	0.1%
State	165	2.1%	5,642	71.3%	1,033	13.1%	8	0.1%

	Dismissal		FOP/Drug Court		Consolidation		Total	
New Castle County	67	1.6%	354	8.6%	172	4.2%	4,104	100%
Kent County	37	2.2%	134	8.1%	91	5.5%	1,652	100%
Sussex County	27	1.3%	25	1.2%	153	7.1%	2,152	100%
State	131	1.7%	513	6.5%	416	5.3%	7,908	100%

*Includes appeals, transfers, reinstatements, and severances.

**Includes Probation Before Judgment.

FOP = First Offender Program.

Source: Court Administrator and Case Scheduling Office, Superior Court;
Administrative Office of the Courts.

SUPERIOR COURT

Types of Dispositions - Fiscal Year 2013 - Criminal Trials - Part One							
	Jury Trial		Non-Jury Trial		Total		
New Castle County	134	85.4%	23	14.6%	157	100%	
Kent County	18	94.7%	1	5.3%	19	100%	
Sussex County	14	93.3%	1	6.7%	15	100%	
State	166	86.9%	25	13.1%	191	100%	

	Guilty		Not Guilty*		No Final Disposition**		Total	
New Castle County	94	59.9%	30	19.1%	33	21.0%	157	100%
Kent County	14	73.7%	4	21.1%	1	5.3%	19	100%
Sussex County	12	80.0%	2	13.3%	1	6.7%	15	100%
State	120	62.8%	36	18.8%	35	18.3%	191	100%

*Includes Acquittals, Dismissals at Trial, and Nolle Prosequis at Trial.

**Includes Hung Juries, Mistrials, and Reserved Decisions.

Source: Court Administrator and Case Scheduling Office, Superior Court; Administrative Office of the Courts.

SUPERIOR COURT

Types of Dispositions - Fiscal Year 2013 - Criminal Trials - Part Two

Jury Trial								
	Guilty	Guilty LIO	Not Guilty	Pled Guilty at Trial	Nol Pros/Dismissed at Trial	Mistrial	Hung Jury	Total
New Castle County	51	13	29	11	0	10	20	134
Kent County	10	1	4	2	0	0	1	18
Sussex County	9	2	2	0	0	1	0	14
State	70	16	35	13	0	11	21	166

Non-Jury Trial								
	Guilty	Guilty LIO	Not Guilty	Pled Guilty at Trial	Nol Pros/Dismissed at Trial	Mistrial		Total*
New Castle County	19	0	1	0	0	0		20
Kent County	1	0	0	0	0	0		1
Sussex County	1	0	0	0	0	0		1
State	21	0	1	0	0	0		22

All Trials								
	Guilty	Guilty LIO	Not Guilty	Pled Guilty at Trial	Nol Pros/Dismissed at Trial	Mistrial	Hung Jury	Total*
New Castle County	70	13	30	11	0	10	20	154
Kent County	11	1	4	2	0	0	1	19
Sussex County	10	2	2	0	0	1	0	15
State	91	16	36	13	0	11	21	188

Types of Dispositions Fiscal Year 2013 - Criminal Nolle Prosequis

	Nolle Prosequis By Special Condition		Nolle Prosequis By Merit		Total	
New Castle County	161	31.6%	349	68.4%	510	100%
Kent County	192	75.3%	63	24.7%	255	100%
Sussex County	35	13.1%	233	86.9%	268	100%
State	388	37.6%	645	62.4%	1033	100%

*Does not include Reserved Decisions.

LIO = Lesser Included Offense.

Nol Pros = Nolle Prosequi.

Source: Court Administrator and Case Scheduling Office, Superior Court; Administrative Office of the Courts.

SUPERIOR COURT

Types of Dispositions Fiscal Year 2013 - Criminal Felony Guilty Pleas						
	Pled Guilty Original		Pled Guilty Lesser		Total	
New Castle County	1,569	87.9%	216	12.1%	1,785	100%
Kent County	557	80.7%	133	19.3%	690	100%
Sussex County	826	83.0%	169	17.0%	995	100%
State	2,952	85.1%	518	14.9%	3,470	100%

Types of Dispositions Fiscal Year 2013 - Criminal Misdemeanor Guilty Pleas						
	Pled Guilty Original		Pled Guilty Lesser*		Total	
New Castle County	706	64.7%	385	35.3%	1,091	100%
Kent County	220	53.1%	194	46.9%	414	100%
Sussex County	476	71.4%	191	28.6%	667	100%
State	1,402	64.5%	770	35.5%	2,172	100%

Types of Dispositions Fiscal Year 2013 - Criminal Total Guilty Pleas						
	Pled Guilty Original		Pled Guilty Lesser*		Total	
New Castle County	2,275	79.1%	601	20.9%	2,876	100%
Kent County	777	70.4%	327	29.6%	1,104	100%
Sussex County	1,302	78.3%	360	21.7%	1,662	100%
State	4,354	77.2%	1,288	22.8%	5,642	100%

*Includes Probation Before Judgment.

Source: Court Administrator and Case Scheduling Office, Superior Court;
Administrative Office of the Courts.

SUPERIOR COURT

Performance Summary Fiscal Year 2013 - Criminal Cases - Elapsed Time			
	Total Number of Cases Disposed	Average Time from Arrest to Disposition	Average Time from Indictment to Disposition
New Castle County	4,104	131.2 days	83.8 days
Kent County	1,652	143.3 days	84.3 days
Sussex County	2,152	167.2 days	123.5 days
State	7,908	143.5 days	94.7 days

Performance Summary Fiscal Year 2013 - Criminal Cases - Compliance with Speedy Trial Standards							
	Total Number of Cases Disposed	Disposed of within 120 Days of Indictment (90%)		Disposed of within 180 Days of Indictment (98%)		Disposed of within 365 Days of Indictment (100%)	
New Castle County	4,104	2,948	71.8%	3,744	91.2%	4,082	99.5%
Kent County	1,652	1,280	77.5%	1,465	88.7%	1,606	97.2%
Sussex County	2,152	1,644	76.4%	1,960	91.1%	2,152	100%
State	7,908	5,872	74.3%	7,169	90.7%	7,840	99.1%

Criminal Cases Performance Explanatory Notes - Fiscal Year 2013

1. The performance summary charts measure the average time from the date of arrest to the date of disposition as well as the average time from the date of indictment/information to the date of disposition.
2. In measuring the elapsed time for defendants for the purpose of determining the rate of compliance with the speedy trial standards, the following are excluded by the Court:
 - a) For all capiases, the time between the date that the capias is issued and the date that it is executed.
 - b) For all Rule 9 summonses and Rule 9 warrants, the time between the arrest and the indictment/information, if any.
 - c) For all nolle prosequis, the time between the scheduled trial date and the actual filing of the nolle prosequis.
 - d) For all mental examinations, the time between the date that the examination is ordered and the date of the receipt of the results.
 - e) For all defendants deemed to be incompetent, the period in which the defendant is considered incompetent.

Source: Court Administrator and Case Scheduling Office, Superior Court; Administrative Office of the Courts.

SUPERIOR COURT

Performance Comparison - Fiscal Years 2012-2013 - Criminal Cases - Average Time from Arrest to Disposition				
	2012 (in days)	2013 (in days)	Change (in days)	% Change
New Castle County	120.9	131.2	10.3	7.9%
Kent County	123.7	143.3	19.6	13.7%
Sussex County	46.3	167.2	120.9	72.3%
State	97.0	143.5	46.5	32.4%

Performance Comparison - Fiscal Years 2012-2013 - Criminal Cases - Average Time from Indictment to Disposition				
	2012 (in days)	2013 (in days)	Change (in days)	% Change
New Castle County	79.7	83.8	4.1	4.9%
Kent County	66.2	84.3	18.1	21.5%
Sussex County	15.8	123.5	107.7	87.2%
State	53.9	94.7	40.8	43.1%

Source: Court Administrator and Case Scheduling Office, Superior Court; Administrative Office of the Courts.

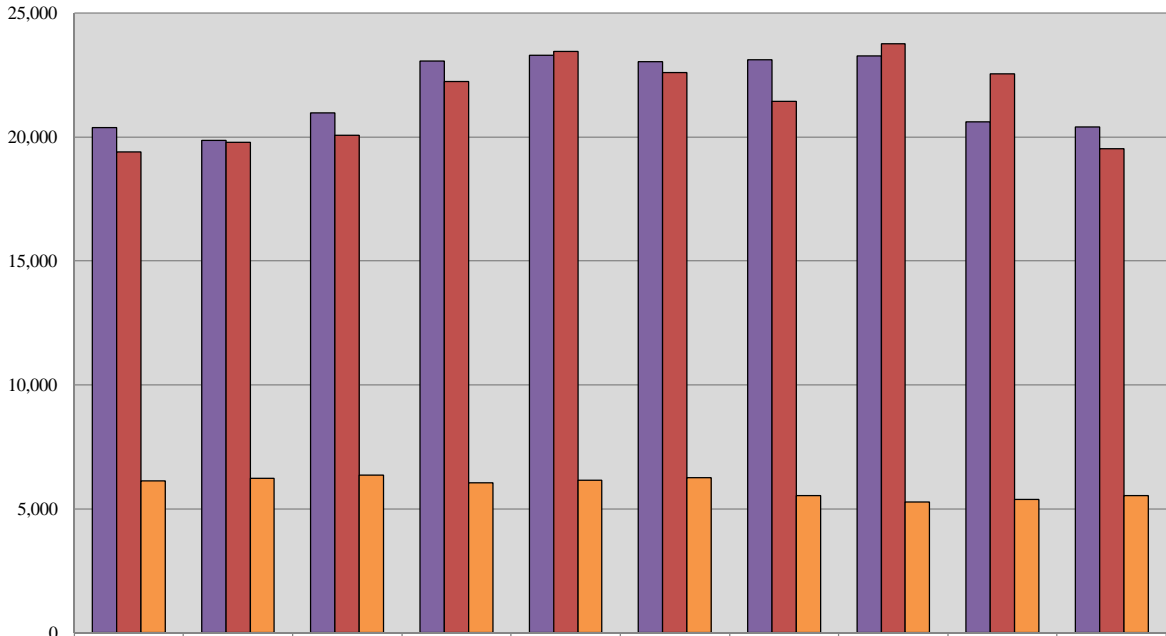
SUPERIOR COURT

Caseload Comparison - Fiscal Years 2012 - 2013 - Total Case Filings				
	2012	2013	Change	% Change
New Castle County	13,230	13,148	-82	-0.6%
Kent County	3,295	3,138	-157	-5.0%
Sussex County	4,091	4,111	20	0.5%
State	20,616	20,397	-219	-1.1%

Caseload Comparison - Fiscal Years 2012 - 2013 - Total Case Dispositions				
	2012	2013	Change	% Change
New Castle County	14,480	12,542	-1,938	-15.5%
Kent County	3,843	3,000	-843	-28.1%
Sussex County	4,221	3,985	-236	-5.9%
State	22,544	19,527	-3,017	-15.5%

Source: Court Administrator, Prothonotary's Offices, and Case Scheduling Office, Superior Court; Administrative Office of the Courts.

Superior Court Total 10-Year Caseload Trend



	2004	2005	2006	2007	2008	2009	2010	2011	2012	2013
Filings	20,387	19,851	20,977	23,075	23,292	23,035	23,124	23,265	20,616	20,397
Dispositions	19,398	19,781	20,077	22,231	23,450	22,602	21,435	23,752	22,544	19,527
VOP Filings	6,119	6,232	6,349	6,055	6,151	6,255	5,523	5,271	5,384	5,520

Fiscal Year