



COURT OF CHANCERY
State of Delaware

2015 Annual Report Statistical Information

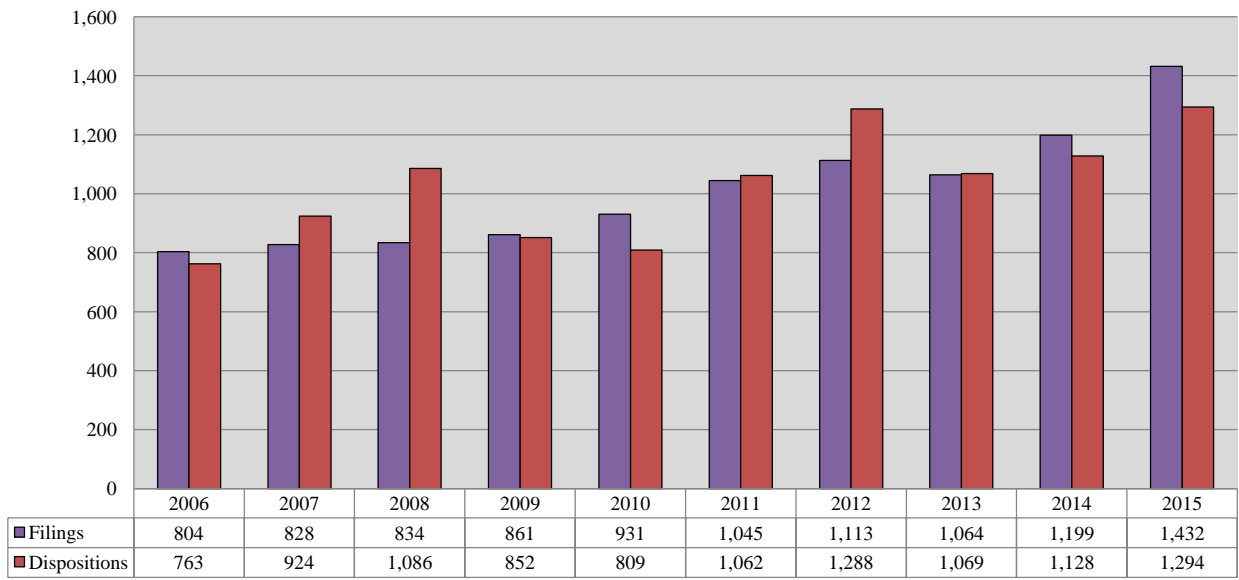
COURT OF CHANCERY

Caseload Comparison - Fiscal Years 2014-2015 - Civil Filings				
	2014	2015	Change	% Change
State	1,199	1,432	233	19.4%

Caseload Comparison - Fiscal Years 2014-2015 - Civil Dispositions				
	2014	2015	Change	% Change
State	1,128	1,294	166	14.7%

Source: Registers in Chancery; Administrative Office of the Courts.

Court of Chancery 10-Year Civil Caseload Trend



Fiscal Year

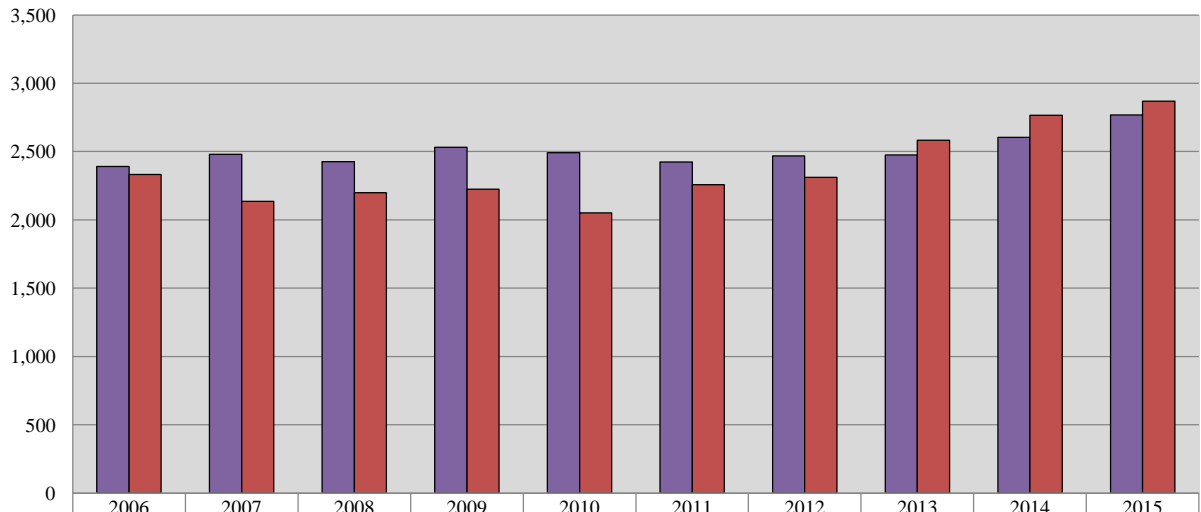
COURT OF CHANCERY

Caseload Comparison - Fiscal Years 2014-2015 - Estates Filings				
	2014	2015	Change	% Change
State	2,605	2,769	164	6.3%

Caseload Comparison - Fiscal Years 2014-2015 - Estates Dispositions				
	2014	2015	Change	% Change
State	2,765	2,870	105	3.8%

Source: Register of Wills; Administrative Office of the Courts.

Court of Chancery 10-Year Estates Caseload Trend



■ Filings	2,390	2,479	2,427	2,531	2,492	2,424	2,469	2,476	2,605	2,769
■ Dispositions	2,333	2,135	2,199	2,225	2,051	2,258	2,312	2,582	2,765	2,870

Fiscal Year

COURT OF CHANCERY

Caseload Comparison - Fiscal Years 2014-2015 - Miscellaneous Matters Filings				
	2014	2015	Change	% Change
State	733	341	-392	-53.5%

Caseload Comparison - Fiscal Years 2014-2015 - Miscellaneous Matters Dispositions				
	2014	2015	Change	% Change
State	1,290	741	-549	-42.6%

Source: Registers of Wills; Administrative Office of the Courts.

COURT OF CHANCERY

Caseload Breakdown - Fiscal Year 2015 - Miscellaneous Matters Filings

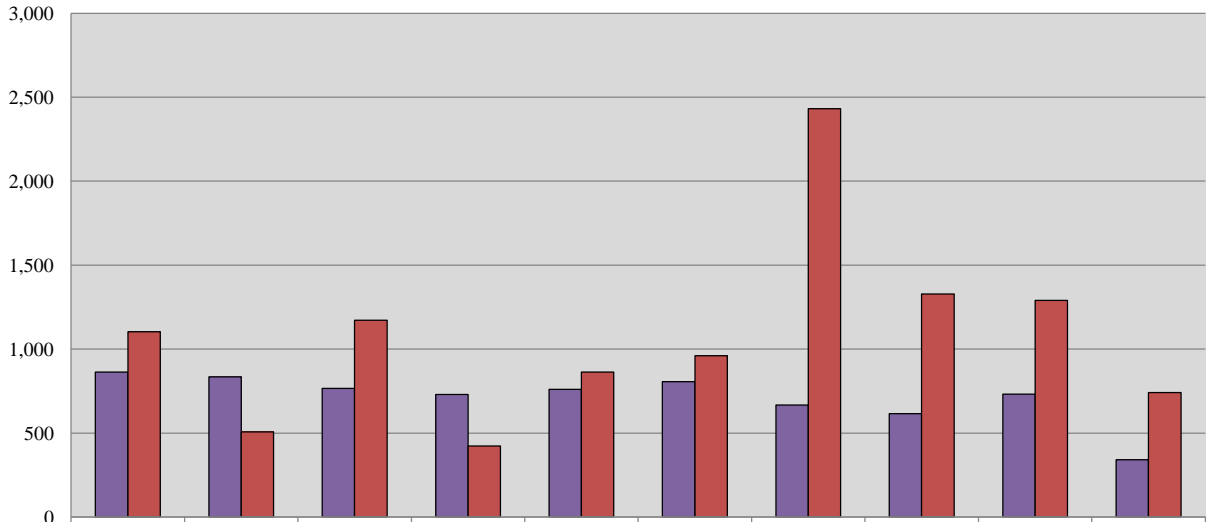
	Guardians for Minors	Guardians for Infirm	Trusts	Other Matters	Total
State	65 19.1%	234 68.6%	4 1.2%	38 11.1%	341 100%

Caseload Breakdown - Fiscal Year 2015 - Miscellaneous Matters Dispositions

	Guardians for Minors	Guardians for Infirm	Trusts	Other Matters	Total
State	270 36.4%	299 40.4%	121 16.3%	51 6.9%	741 100%

Source: Registers in Chancery; Administrative Office of the Courts.

Court of Chancery 10-Year Miscellaneous Caseload Trend



	2006	2007	2008	2009	2010	2011	2012	2013	2014	2015
■ Filings	863	835	766	730	761	807	667	615	733	341
■ Dispositions	1,104	508	1,172	423	864	961	2,432	1,328	1,290	741

Fiscal Year

COURT OF CHANCERY

Caseload Comparison - Fiscal Years 2014-2015 - Total Case Filings*				
	2014	2015	Change	% Change
State	4,537	4,542	5	0.1%

Caseload Comparison - Fiscal Years 2014-2015 - Total Case Dispositions*				
	2014	2015	Change	% Change
State	5,183	4,905	-278	-5.4%

*Total includes Civil, Miscellaneous, and Estates.

Source: Registers in Chancery; Registers of Wills; Administrative Office of the Courts.

Court of Chancery 10-Year Total Caseload Trend (Civil, Miscellaneous & Estates)

