



State of Delaware

2016 Annual Report Statistical Information



SUPREME COURT
State of Delaware

2016 Annual Report Statistical Information

SUPREME COURT

Caseload Comparison - Fiscal Years 2015-2016 - Filings				
	2015	2016	Change	% Change
Criminal Appeals	414	412	-2	-0.5%
Civil Appeals	245	253	8	3.3%
Certifications	2	4	2	100%
Original Applications	26	23	-3	-11.5%
Bd. on Prof. Resp.	15	14	-1	-6.7%
Bd. of Bar Exam	0	0	0	0%
Advisory Opinions	0	0	0	0%
Other	1	1	0	0.0%
Total	703	707	4	0.6%

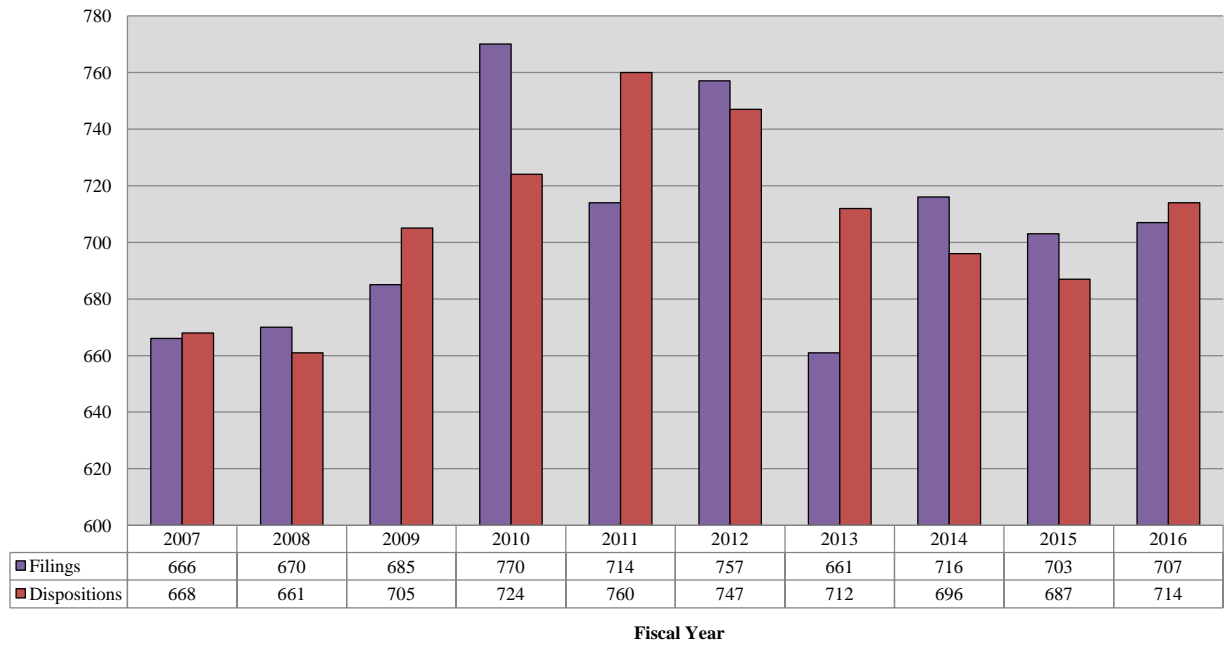
Caseload Comparison - Fiscal Years 2015-2016 - Dispositions				
	2015	2016	Change	% Change
Criminal Appeals	396	436	40	10.1%
Civil Appeals	251	232	-19	-7.6%
Certifications	3	3	0	0%
Original Applications	18	26	8	44.4%
Bd. on Prof. Resp.	13	16	3	23%
Bd. of Bar Exam	0	0	0	0%
Advisory Opinions	0	0	0	0%
Other	6	1	-5	-83%
Total	687	714	27	3.9%

Bd. on Prof. Resp. = Board on Professional Responsibility.

Bd. of Bar Exam. = Board of Bar Examiners.

Source: Court Administrator and Clerk of the Supreme Court; Administrative Office of the Courts.

Supreme Court 10-Year Total Caseload Trend



SUPREME COURT

Caseload Breakdowns - Fiscal Year 2016 - Filings										
	Court of Chancery		Superior Court		Family Court		Non-Court Originated		Total	
Criminal Appeals	0	0%	412	100%	0	0%	0	0%	412	100%
Civil Appeals	64	25.3%	132	52.2%	57	22.5%	0	0%	253	100%
Other*	0	0%	0	0%	0	0%	42	100%	42	100%
Total	64	9.1%	544	76.9%	57	8.1%	42	5.9%	707	100%

Caseload Breakdowns - Fiscal Year 2016- Dispositions										
	Court of Chancery		Superior Court		Family Court		Non-Court Originated		Total	
Criminal Appeals	0	0%	436	100%	0	0%	0	0%	436	100%
Civil Appeals	62	26.7%	119	51.3%	51	22.0%	0	0%	232	100%
Other*	0	0%	0	0%	0	0%	46	100%	46	100%
Total	62	8.7%	555	77.7%	51	7.1%	46	6.4%	714	100%

*Includes Original Applications; Certifications; Advisory Opinions; Appeals from the Board on Professional Responsibility and the Board of Bar Examiners; and Other Filing & Disposition Types.

Source: Court Administrator and Clerk of the Supreme Court; Administrative Office of the Courts.

SUPREME COURT

Types of Dispositions - Fiscal Year 2016										
	Affirmed		Affirmed Part/Reversed Part		Reversed		Remanded		Voluntary Dismissal	
Criminal Appeals	288	66.1%	2	0.5%	9	2.1%	7	1.6%	32	7.3%
Civil Appeals & Other	141	50.7%	2	0.7%	10	3.6%	1	0.4%	35	12.6%
Total	429	60.1%	4	0.6%	19	2.7%	8	1.1%	67	9.4%
	Court Dismissal		Leave to Appeal Denied		Other*				Total	
Criminal Appeals	98	22.5%	0	0.0%	0	0.0%			436	100%
Civil Appeals & Other	53	19.1%	15	5.4%	21	7.6%			278	100%
Total	151	21.1%	15	2.1%	21	2.9%			714	100%

Methods of Dispositions - Fiscal Year 2016						
	Assigned Opinion		Per Curiam Opinion		Written Order	
Criminal Appeals	26	6.0%	0	0%	378	86.7%
Civil Appeals	27	11.6%	0	0%	171	73.7%
Certifications	3	100%	0	0%	0	0%
Original Applications	2	8%	0	0%	23	88%
Bd. on Prof. Resp.	0	0%	2	13%	14	87.5%
Bd. of Bar Exam.	0	0%	0	0%	0	0%
Advisory Opinions	0	0%	0	0%	0	0%
Other	0	0%	0	0%	1	100%
Total	58	8.1%	2	0%	587	82.2%
	Voluntary Dismissal		Other		Total	
Criminal Appeals	32	7.3%	0	0%	436	100%
Civil Appeals	34	14.7%	0	0%	232	100%
Certifications	0	0.0%	0	0%	3	100%
Original Applications	1	3.8%	0	0%	26	100%
Bd. on Prof. Resp.	0	0.0%	0	0%	16	100%
Bd. of Bar Exam.	0	0%	0	0%	0	-
Advisory Opinions	0	0%	0	0%	0	-
Other	0	0%	0	0%	1	100%
Total	67	9.4%	0	0%	714	100%

Bd. on Prof. Resp. = Board on Professional Responsibility.

Bd. of Bar Exam. = Board of Bar Examiners.

Source: Court Administrator and Clerk of the Supreme Court; Administrative Office of the Courts.

SUPREME COURT

Performance Summary - Fiscal Year 2016 - Average Elapsed Time to Disposition					
	Number of Dispositions	Average Time From Filing to Disposition		Average Time From Submission to Disposition*	
Criminal Appeals	436	177.0	days	34.2	days
Civil Appeals	232	178.8	days	25.7	days
Certifications	3	138.7	days	13.3	days
Original Applications	26	68.9	days	30.7	days
BPR	16	29.8	days	7.6	days
BBE	0	-	days	-	days
Advisory Opinions	0	-	days	-	days
Other	1	21.0	days	9.0	days
Total	714	167.4	days	29.7	days

Caseload Comparison - Fiscal Years 2015-2016 - Average Time from Filing to Disposition							
	2015		2016		Change	% Change	
Criminal Appeals	172.8	days	177.0	days	4.2	days	2.5%
Civil Appeals	187.1	days	178.8	days	-8.3	days	-4.4%
Certifications	171.3	days	138.7	days	-32.6	days	-19.1%
Original Applications	50.5	days	68.9	days	18.4	days	36.5%
BPR	62.4	days	29.8	days	-32.6	days	-52.2%
BBE		days	-	days	-	days	-
Advisory Opinions		days	-	days	-	days	-
Other	35.5	days	21.0	days	-14.5	days	-40.8%
Total	167.2	days	167.4	days	0.2	days	0.1%

*Average time from date submitted for judicial decision to actual date of disposition. The time for a case that is submitted and disposed in the same day is zero. Not all Supreme Court cases require a judicial decision.

BPR = Board on Professional Responsibility.

BBE = Board of Bar Examiners.

Source: Court Administrator and Clerk of the Supreme Court; Administrative Office of the Courts.

SUPREME COURT

Performance Breakdowns - Fiscal Year 2016 - Elapsed Time by Disposition Type					
	Number of Dispositions	Average Time From Filing to Disposition		Average Time From Submission to Disposition*	
Affirmed	429	215.4	days	37.7	days
Affirmed Part/Reversed Part	4	299.0	days	48.5	days
Reversed	19	302.7	days	43.3	days
Remanded	8	184.5	days	43.5	days
Voluntary Dismissal	67	78.2	days	0.1	days
Court Dismissal	151	78.7	days	21.6	days
Leave to Appeal Denied	15	22.5	days	13.2	days
Other	21	58.9	days	10.0	days
Total	714	167.4	days	29.7	days

Performance Breakdowns - Fiscal Year 2016 - Elapsed Time by Disposition Method					
	Number of Dispositions	Average Time From Filing to Disposition		Average Time From Submission to Disposition*	
Assigned Opinion	58	276.5	days	31.7	days
Per Curiam Opinion	2	78.5	days	27.5	days
Written Order	587	167.1	days	32.9	days
Voluntary Dismissal	67	78.2	days	0.1	days
Other	0	-	days	-	days
Total	714	167.4	days	29.7	days

*Average time from date submitted for judicial decision to actual date of disposition. The time for a case that is submitted and disposed in the same day is zero. Not all Supreme Court cases require a judicial decision.

Source: Court Administrator and Clerk of the Supreme Court; Administrative Office of the Courts.



COURT OF CHANCERY
State of Delaware

2016 Annual Report Statistical Information

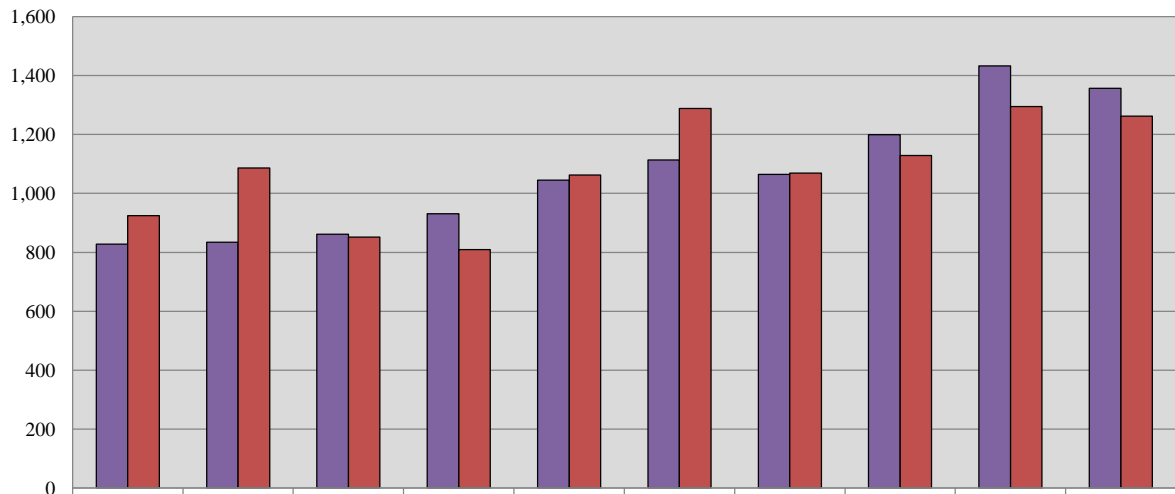
COURT OF CHANCERY

Caseload Comparison - Fiscal Years 2015-2016 - Civil Filings				
	2015	2016	Change	% Change
State	1,432	1,356	-76	-5.3%

Caseload Comparison - Fiscal Years 2015-2016 - Civil Dispositions				
	2015	2016	Change	% Change
State	1,294	1,262	-32	-2.5%

Source: Registers in Chancery; Administrative Office of the Courts.

Court of Chancery 10-Year Civil Caseload Trend



■ Filings	828	834	861	931	1,045	1,113	1,064	1,199	1,432	1,356
■ Dispositions	924	1,086	852	809	1,062	1,288	1,069	1,128	1,294	1,262

Fiscal Year

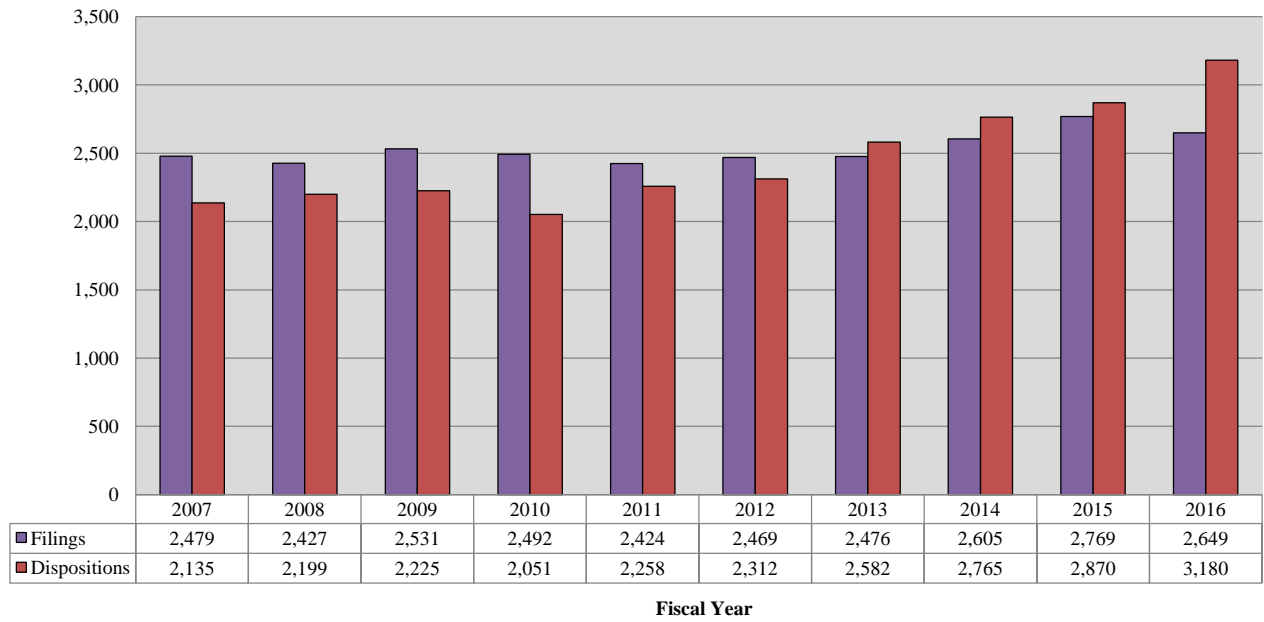
COURT OF CHANCERY

Caseload Comparison - Fiscal Years 2015-2016 - Estates Filings				
	2015	2016	Change	% Change
State	2,769	2,649	-120	-4.3%

Caseload Comparison - Fiscal Years 2015-2016 - Estates Dispositions				
	2015	2016	Change	% Change
State	2,870	3,180	310	10.8%

Source: Register of Wills; Administrative Office of the Courts.

Court of Chancery 10-Year Estates Caseload Trend



COURT OF CHANCERY

Caseload Comparison - Fiscal Years 2015-2016 - Miscellaneous Matters Filings				
	2015	2016	Change	% Change
State	341	250	-91	-26.7%

Caseload Comparison - Fiscal Years 2015-2016 - Miscellaneous Matters Dispositions				
	2015	2016	Change	% Change
State	741	628	-113	-15.2%

Source: Registers of Wills; Administrative Office of the Courts.

COURT OF CHANCERY

Caseload Breakdown - Fiscal Year 2016 - Miscellaneous Matters Filings

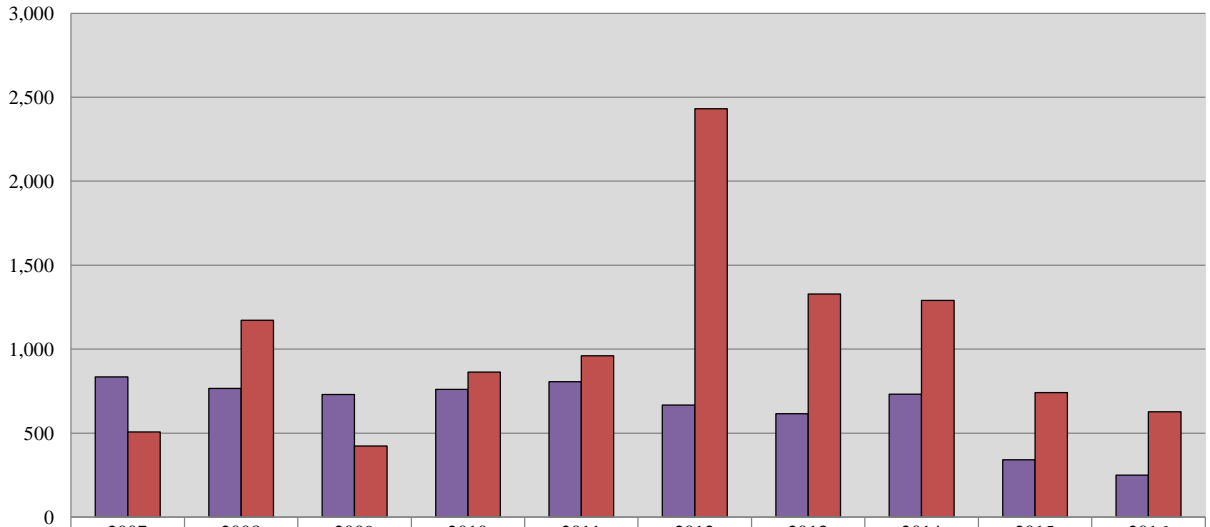
	Guardians for Minors		Guardians for Infirm		Trusts		Other Matters		Total	
State	30	12.0%	218	87.2%	2	0.8%	0	0.0%	250	100%

Caseload Breakdown - Fiscal Year 2016 - Miscellaneous Matters Dispositions

	Guardians for Minors		Guardians for Infirm		Trusts		Other Matters		Total	
State	305	48.6%	188	29.9%	85	13.5%	50	8.0%	628	100%

Source: Registers in Chancery; Administrative Office of the Courts.

Court of Chancery 10-Year Miscellaneous Caseload Trend



	2007	2008	2009	2010	2011	2012	2013	2014	2015	2016
■ Filings	835	766	730	761	807	667	615	733	341	250
■ Dispositions	508	1,172	423	864	961	2,432	1,328	1,290	741	628

Fiscal Year

COURT OF CHANCERY

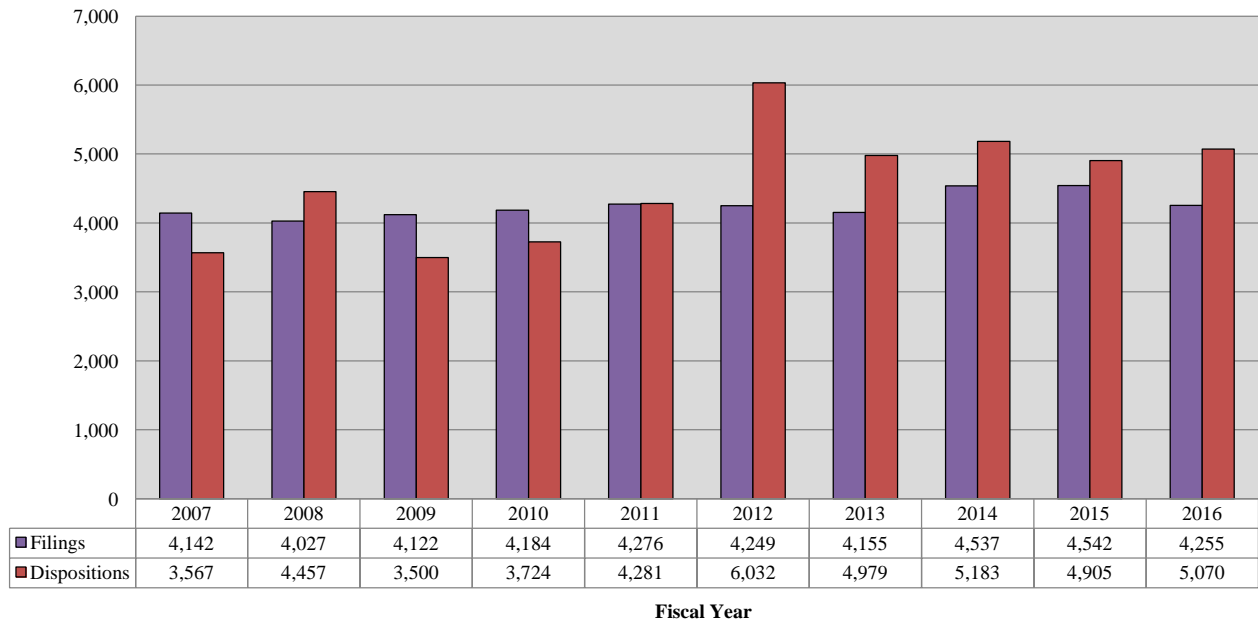
Caseload Comparison - Fiscal Years 2015-2016 - Total Case Filings*				
	2015	2016	Change	% Change
State	4,542	4,255	-287	-6.3%

Caseload Comparison - Fiscal Years 2015-2016 - Total Case Dispositions*				
	2015	2016	Change	% Change
State	4,905	5,070	165	3.4%

*Total includes Civil, Miscellaneous, and Estates.

Source: Registers in Chancery; Registers of Wills; Administrative Office of the Courts.

Court of Chancery 10-Year Total Caseload Trend (Civil, Miscellaneous & Estates)





SUPERIOR COURT
State of Delaware

2016 Annual Report Statistical Information

SUPERIOR COURT

Caseload Comparison - Fiscal Years 2015-2016 - Criminal Case Filings				
	2015	2016	Change	% Change
New Castle County	3,677	3,272	-405	-12.4%
Kent County	1,410	1,143	-267	-23.4%
Sussex County	1,955	1,987	32	1.6%
State	7,042	6,402	-640	-10.0%

Caseload Comparison - Fiscal Years 2015-2016 - Criminal Case Dispositions				
	2015	2016	Change	% Change
New Castle County	3,831	3,304	-527	-16.0%
Kent County	1,446	1,185	-261	-22.0%
Sussex County	1,739	1,763	24	1.4%
State	7,016	6,252	-764	-12.2%

Source: Court Administrator and Case Scheduling Office, Superior Court;
Administrative Office of the Courts.

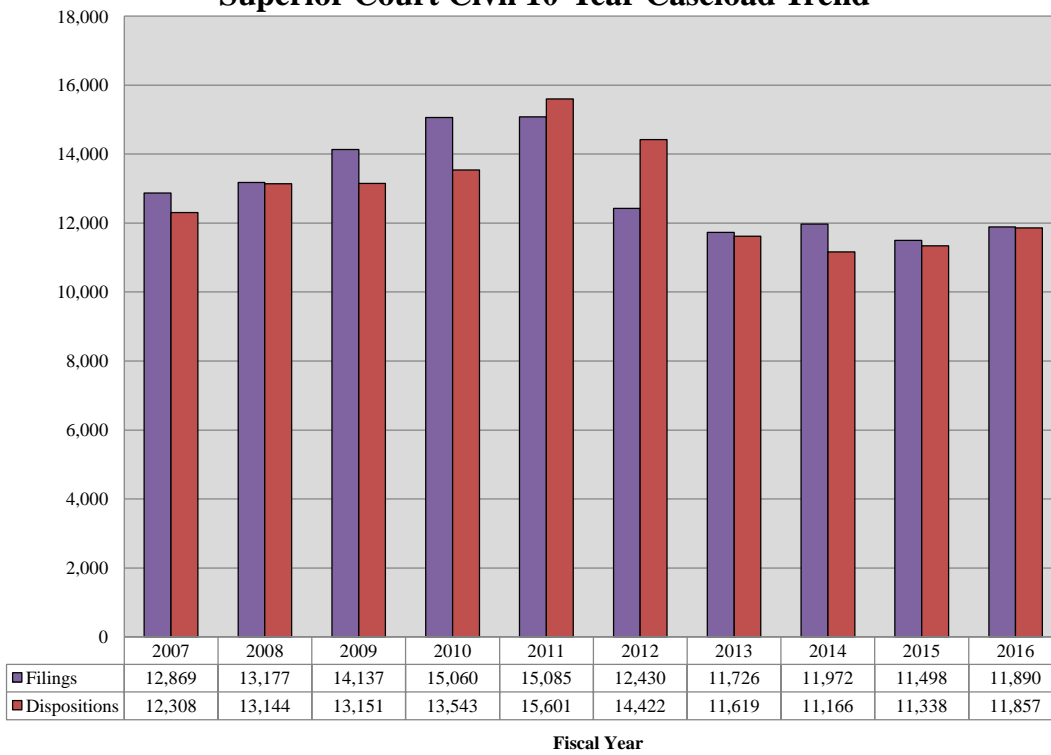
SUPERIOR COURT

Caseload Breakdowns - Fiscal Year 2016 - Civil Case Filings						
	Complaints		Mechanic's Liens and Mortgages		Appeals	
New Castle County	3,279	36.8%	1,647	18.5%	106	1.2%
Kent County	373	25.6%	586	40.2%	39	2.7%
Sussex County	387	25.3%	625	40.9%	28	1.8%
State	4,039	34.0%	2,858	24.0%	173	1.5%
	Involuntary Commitments		Miscellaneous		Total	
New Castle County	513	5.8%	3,362	37.7%	8,907	100%
Kent County	128	8.8%	330	22.7%	1,456	100%
Sussex County	0	0%	487	31.9%	1,527	100%
State	641	5.4%	4,179	35.1%	11,890	100%

Caseload Breakdowns - Fiscal Year 2016- Civil Case Dispositions						
	Complaints		Mechanic's Liens and Mortgages		Appeals	
New Castle County	3,229	36.6%	1,604	18.2%	107	1.2%
Kent County	436	28.7%	637	41.9%	27	1.8%
Sussex County	392	25.8%	617	40.6%	31	2.0%
State	4,057	34.2%	2,858	24.1%	165	1.4%
	Involuntary Commitments		Miscellaneous		Total	
New Castle County	239	2.7%	3,640	41.3%	8,819	100%
Kent County	116	7.6%	303	19.9%	1,519	100%
Sussex County	3	0.2%	476	31.3%	1,519	100%
State	358	3.0%	4,419	37.3%	11,857	100%

Source: Prothonotary's Offices, Superior Court; Administrative Office of the Courts.

Superior Court Civil 10-Year Caseload Trend



* Report incorporates additional data made available since publication of the FY 2015 Annual Report.

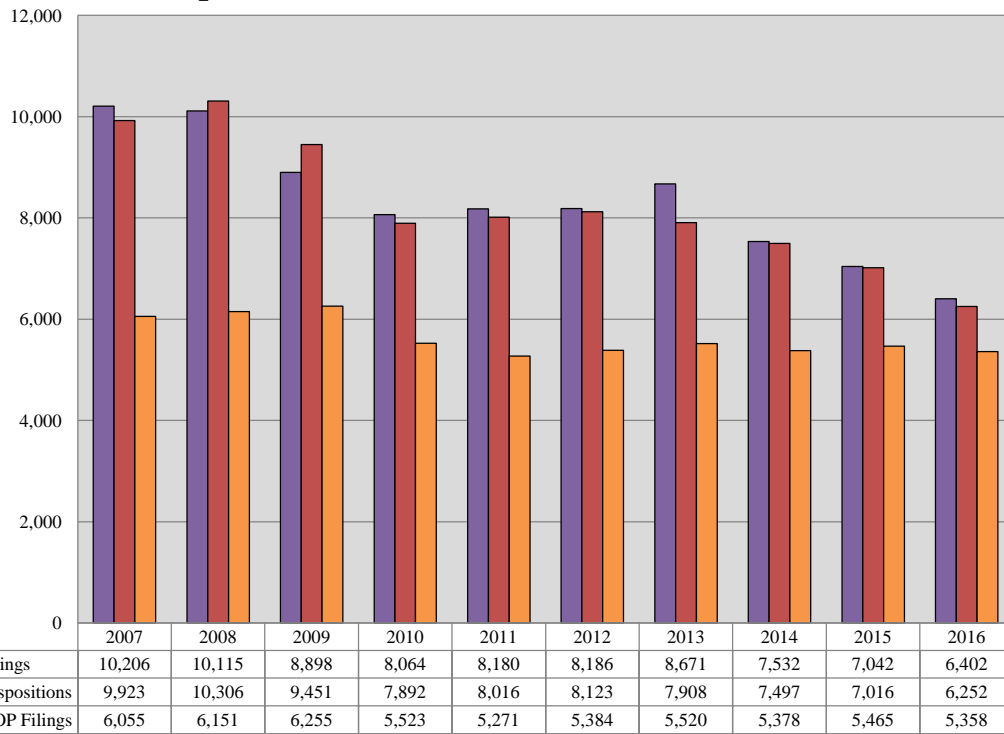
SUPERIOR COURT

Caseload Comparison - Fiscal Years 2015-2016 - Civil Case Filings				
	2015	2016	Change	% Change
New Castle County	8,381	8,907	526	5.9%
Kent County	1,553	1,456	-97	-6.7%
Sussex County	1,564	1,527	-37	-2.4%
State	11,498	11,890	392	3.3%

Caseload Comparison - Fiscal Years 2015-2016 - Civil Case Dispositions				
	2015	2016	Change	% Change
New Castle County	8,228	8,819	591	6.7%
Kent County	1,517	1,519	2	0.1%
Sussex County	1,593	1,519	-74	-4.9%
State	11,338	11,857	519	4.4%

Source: Prothonotary's Offices, Superior Court; Administrative Office of the Courts.

Superior Court Criminal 10-Year Caseload Trend



Fiscal Year

VOP = Violation of Probation.

SUPERIOR COURT

Caseload Breakdowns- Fiscal Year 2016 - Criminal Filings									
	Indictment		Rule 9 Warrant		Information		Other*		Total
New Castle County	2,240	68.5%	224	6.8%	773	23.6%	35	1.1%	3,272
Kent County	801	70.1%	41	3.6%	300	26.2%	1	0.1%	1,143
Sussex County	752	37.8%	204	10.3%	1,031	51.9%	0	0%	1,987
State	3,793	59.2%	469	7.3%	2,104	32.9%	36	0.6%	6,402

Caseload Breakdowns- Fiscal Year 2016 - Criminal Dispositions										
	Trial		Guilty Plea**		Nolle Prosequi		Remand/Transfer		Order/Reserved Decision	
New Castle County	139	4.2%	2,317	70.1%	450	13.6%	5	0.2%	0	0%
Kent County	21	1.8%	825	69.7%	209	17.7%	0	0%	0	0%
Sussex County	20	1.1%	1,469	83.3%	237	13.4%	3	0.2%	0	N/A
State	180	2.9%	4,611	73.8%	896	14.3%	8	0.1%	-	0%
	Dismissal		FOP/Drug Court		Consolidation		Total			
New Castle County	15	0.5%	207	6.3%	171	5.2%	3,304	100%		
Kent County	29	2.4%	71	6.0%	29	2.4%	1,184	100%		
Sussex County	3	0.2%	28	1.6%	3	0.2%	1,763	100%		
State	47	0.8%	306	4.9%	203	3.2%	6,251	100%		

*Includes appeals, transfers, reinstatements, and severances.

**Includes Probation Before Judgment.

FOP = First Offender Program.

Source: Court Administrator and Case Scheduling Office, Superior Court; Administrative Office of the Courts.

SUPERIOR COURT

Types of Dispositions - Fiscal Year 2016 - Criminal Trials - Part One							
	Jury Trial		Non-Jury Trial		Total		
New Castle County	140	87.0%	21	13.0%	161	100%	
Kent County	17	81.0%	4	19.0%	21	100%	
Sussex County	20	100%	0	19.0%	20	100%	
State	177	87.6%	25	12.4%	202	100%	

	Guilty		Not Guilty*		No Final Disposition**		Total	
New Castle County	114	70.8%	25	15.5%	22	13.7%	161	100%
Kent County	14	66.7%	7	33.3%	0	0%	21	100%
Sussex County	15	75.0%	2	10.0%	3	15.0%	20	100%
State	143	70.8%	34	16.8%	25	12.4%	202	100%

*Includes Acquittals, Dismissals at Trial, and Nolle Prosequis at Trial.

**Includes Hung Juries, Mistrials, and Reserved Decisions.

Source: Court Administrator and Case Scheduling Office, Superior Court; Administrative Office of the Courts.

SUPERIOR COURT

Types of Dispositions - Fiscal Year 2016 - Criminal Trials - Part Two									
Jury Trial									
	Guilty	Guilty LIO	Not Guilty	Pled Guilty at Trial	Nol Pros/Dismissed at Trial	Mistrial	Hung Jury	Total	
New Castle County	82	10	23	3	1	6	15	140	
Kent County	9	0	4	3	1	0	0	17	
Sussex County	12	0	0	3	2	0	3	20	
State	103	10	27	9	4	6	18	177	
Non-Jury Trial									
	Guilty	Guilty LIO	Not Guilty	Pled Guilty at Trial	Nol Pros/Dismissed at Trial	Mistrial	Reserved Decision	Total*	
New Castle County	18	0	1	1	0	0	1	21	
Kent County	2	0	2	0	0	0	0	4	
Sussex County	0	0	0	0	0	0	0	0	
State	20	0	3	1	0	0	1	25	
All Trials									
	Guilty	Guilty LIO	Not Guilty	Pled Guilty at Trial	Nol Pros/Dismissed at Trial	Mistrial	Hung Jury	Reserved Decision	Total
New Castle County	100	10	24	4	1	6	15	1	161
Kent County	11	0	6	3	1	0	0	0	21
Sussex County	12	0	0	3	2	0	3	0	20
State	123	10	30	10	4	6	18	1	202

Types of Dispositions Fiscal Year 2016 - Criminal Nolle Prosequis									
	Nolle Prosequis By Special Condition		Nolle Prosequis By Merit		NPL		Total		
New Castle County	159	35.3%	269	59.8%	22	4.9%	450	100%	
Kent County	153	73.2%	56	26.8%	0	0%	209	100%	
Sussex County	18	7.6%	219	92.4%	0	0%	237	100%	
State	330	36.8%	544	60.7%	22	2.5%	896	100%	

LIO = Lesser Included Offense.

Nol Pros = Nolle Prosequi.

SUPERIOR COURT

Types of Dispositions Fiscal Year 2016 - Criminal Felony Guilty Pleas						
	Pled Guilty Original		Pled Guilty Lesser		Total	
New Castle County	1,298	85.1%	227	14.9%	1,525	100%
Kent County	462	86.0%	75	14.0%	537	100%
Sussex County	674	85.2%	117	14.8%	791	100%
State	2,434	85.3%	419	14.7%	2,853	100%

Types of Dispositions Fiscal Year 2016- Criminal Misdemeanor Guilty Pleas						
	Pled Guilty Original		Pled Guilty Lesser*		Total	
New Castle County	516	65.2%	276	34.8%	792	100%
Kent County	152	52.8%	136	47.2%	288	100%
Sussex County	374	55.2%	304	44.8%	678	100%
State	1,042	59.3%	716	40.7%	1,758	100%

Types of Dispositions Fiscal Year 2016 - Criminal Total Guilty Pleas						
	Pled Guilty Original		Pled Guilty Lesser*		Total	
New Castle County	1,814	78.3%	503	21.7%	2,317	100%
Kent County	614	74.4%	211	25.6%	825	100%
Sussex County	1,048	71.3%	421	28.7%	1,469	100%
State	3,476	75.4%	1,135	24.6%	4,611	100%

*Includes Probation Before Judgment.

Source: Court Administrator and Case Scheduling Office, Superior Court;
Administrative Office of the Courts.

SUPERIOR COURT

Performance Summary Fiscal Year 2016 - Criminal Cases - Elapsed Time			
	Total Number of Cases Disposed	Average Time from Arrest to Disposition	Average Time from Indictment to Disposition
New Castle County	3,304	166.2 days	97.7 days
Kent County	1,185	193.9 days	129.6 days
Sussex County	1,763	154.2 days	104.3 days
State	6,252	168.1 days	105.6 days

Performance Summary Fiscal Year 2016 - Criminal Cases - Compliance with Speedy Trial Standards							
	Total Number of Cases Disposed	Disposed of within 120 Days of Indictment (90%)		Disposed of within 180 Days of Indictment (98%)		Disposed of within 365 Days of Indictment (100%)	
New Castle County	3,304	2,148	65.0%	2,856	86.4%	3,242	98.1%
Kent County	1,185	747	63.0%	898	75.8%	1,090	92.0%
Sussex County	1,763	1,220	69.2%	127	7.2%	1,688	95.7%
State	6,252	4,115	65.8%	3,881	62.1%	6,020	96.3%

Criminal Cases Performance Explanatory Notes - Fiscal Year 2016

1. The performance summary charts measure the average time from the date of arrest to the date of disposition as well as the average time from the date of indictment/information to the date of disposition.
2. In measuring the elapsed time for defendants for the purpose of determining the rate of compliance with the speedy trial standards, the following are excluded by the Court:
 - a) For all capiases, the time between the date that the capias is issued and the date that it is executed.
 - b) For all Rule 9 summonses and Rule 9 warrants, the time between the arrest and the indictment/information, if any.
 - c) For all mental examinations, the time between the date that the examination is ordered and the date of the receipt of the results.
 - d) For all defendants deemed to be incompetent, the period in which the defendant is considered incompetent.

Source: Court Administrator and Case Scheduling Office, Superior Court; Administrative Office of the Courts.

SUPERIOR COURT

Performance Comparison - Fiscal Years 2015-2016 - Criminal Cases - Average Time from Arrest to Disposition

	2015 (in days)	2016 (in days)	Change (in days)	% Change
New Castle County	165.1	166.2	1.1	0.7%
Kent County	181.5	193.9	12.4	6.4%
Sussex County	173.4	154.2	-19.2	-12.4%
State	170.5	168.1	-2.4	-1.4%

Performance Comparison - Fiscal Years 2015-2015 - Criminal Cases - Average Time from Indictment to Disposition

	2015 (in days)	2016 (in days)	Change (in days)	% Change
New Castle County	101.2	97.7	-3.5	-3.6%
Kent County	114.2	129.6	15.4	11.9%
Sussex County	107.2	104.3	-2.9	-2.8%
State	105.4	105.6	0.2	0.2%

Source: Court Administrator and Case Scheduling Office, Superior Court; Administrative Office of the Courts.

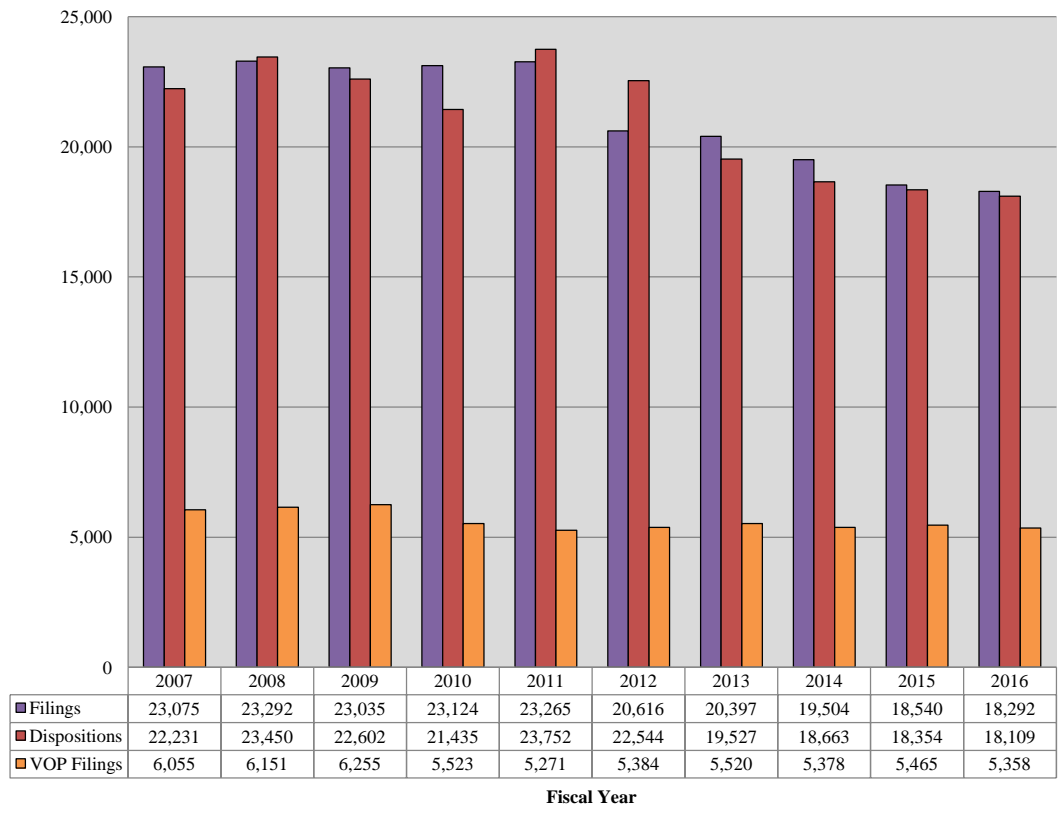
SUPERIOR COURT

Caseload Comparison - Fiscal Years 2015-2016 - Total Case Filings				
	2015	2016	Change	% Change
New Castle County	12,058	12,179	121	1.0%
Kent County	2,963	2,599	-364	-14.0%
Sussex County	3,519	3,514	-5	-0.1%
State	18,540	18,292	-248	-1.4%

Caseload Comparison - Fiscal Years 2015-2016 - Total Case Dispositions				
	2015	2016	Change	% Change
New Castle County	12,059	12,123	64	0.5%
Kent County	2,963	2,704	-259	-9.6%
Sussex County	3,332	3,282	-50	-1.5%
State	18,354	18,109	-245	-1.4%

Source: Court Administrator, Prothonotary's Offices, and Case Scheduling Office, Superior Court; Administrative Office of the Courts.

Superior Court Total 10-Year Caseload Trend





FAMILY COURT
State of Delaware

2016 Annual Report Statistical Information

FAMILY COURT

Caseload Comparison - Fiscal Years 2015-2016 - Adult Criminal Case Filings				
	2015	2016	Change	% Change
New Castle County	2,231	2,290	59	2.6%
Kent County	708	769	61	8.6%
Sussex County	669	628	-41	-6.1%
State	3,608	3,687	79	2.2%

Caseload Comparison - Fiscal Years 2015-2016 - Adult Criminal Case Dispositions				
	2015	2016	Change	% Change
New Castle County	2,307	2,162	-145	-6.3%
Kent County	702	725	23	3.3%
Sussex County	627	617	-10	-1.6%
State	3,636	3,504	-132	-3.6%

Source: Court Administrator, Family Court; Administrative Office of the Courts.

FAMILY COURT

Caseload Comparison - Fiscal Years 2015-2016 - Civil Case Filings				
	2015	2016	Change	% Change
New Castle County	19,688	22,185	2,497	12.7%
Kent County	8,283	8,317	34	0.4%
Sussex County	10,103	9,795	-308	-3.0%
State	38,074	40,297	2,223	5.8%

Caseload Comparison - Fiscal Years 2015-2016 - Civil Case Dispositions				
	2015	2016	Change	% Change
New Castle County	19,465	21,271	1,806	9.3%
Kent County	7,866	8,437	571	7.3%
Sussex County	9,598	9,750	152	1.6%
State	36,929	39,458	2,529	6.8%

Source: Court Administrator, Family Court; Administrative Office of the Courts.

FAMILY COURT

Caseload Breakdown - Fiscal Year 2016 - Civil Case Filings								
	Child Support/New Non-support		Child Support/Modifications		Child Support/Arrearages		Child Support/Verified Notice of Income Attachment	
New Castle County	4,295	19.4%	1,611	7.3%	3,753	16.9%	13	0.1%
Kent County	1,447	17.4%	571	6.9%	1,289	15.5%	5	0.1%
Sussex County	1,698	17.3%	614	6.3%	2,351	24.0%	0	0.0%
State	7,440	18.5%	2,796	6.9%	7,393	18.3%	18	0.0%
	Child Support/Determination of Parentage		Child Support/Revocation		Child Support/Registration of Foreign Order		Child Support/Notice of Admin. Adjustment	
New Castle County	323	1.5%	937	4.2%	217	1.0%	1,494	6.7%
Kent County	43	0.5%	357	4.3%	73	0.9%	539	6.5%
Sussex County	73	0.7%	337	3.4%	89	0.9%	1,221	12.5%
State	439	1.1%	1,631	4.0%	379	0.9%	3,254	8.1%
	Child Support/Other Support		Custody		Dependency/Neglect		Visitation	
New Castle County	15	0.1%	2,039	9.2%	225	1.0%	368	1.7%
Kent County	8	0.1%	797	9.6%	93	1.1%	142	1.7%
Sussex County	33	0.3%	801	8.2%	73	0.7%	115	1.2%
State	56	0.1%	3,637	9.0%	391	1.0%	625	1.6%
	Termination of Parental Rights		Civil Dissolution		Guardianship		Spousal Support	
New Castle County	134	0.6%	0	0.0%	1,070	4.8%	68	0.3%
Kent County	24	0.3%	0	0.0%	450	5.4%	17	0.2%
Sussex County	51	0.5%	0	0.0%	467	4.8%	9	0.1%
State	209	0.5%	0	0.0%	1,987	4.9%	94	0.2%
	Expungements (Juv. & Adult)		Imperiling Family Relationships		Protection from Abuse		Divorce/Annulment	
New Castle County	444	2.0%	29	0.1%	2,368	10.7%	1,911	8.6%
Kent County	160	1.9%	2	0.0%	1,086	13.1%	755	9.1%
Sussex County	174	1.8%	0	0.0%	697	7.1%	753	7.7%
State	778	1.9%	31	0.1%	4,151	10.3%	3,419	8.5%
	Rules to Show Cause/Other Civil Contempt		Minor to Marry		Miscellaneous Civil		Adoption	
New Castle County	516	2.3%	2	0.0%	231	1.0%	122	0.5%
Kent County	184	2.2%	0	0.0%	248	3.0%	27	0.3%
Sussex County	127	1.3%	3	0.0%	57	0.6%	52	0.5%
State	827	2.1%	5	0.0%	536	1.3%	201	0.5%
	Total							
New Castle County	22,185	100%						
Kent County	8,317	100%						
Sussex County	9,795	100%						
State	40,297	100%						

Source: Court Administrator, Family Court; Administrative Office of the Courts.

FAMILY COURT

Caseload Breakdown - Fiscal Year 2016 - Civil Case Dispositions								
	Child Support/New Non-support		Child Support/Modifications		Child Support/Arrearages		Child Support/Verified Notice of Income Attachment	
New Castle County	4,164	19.6%	1,381	6.5%	3,164	14.9%	11	0.1%
Kent County	1,566	18.6%	592	7.0%	1,260	14.9%	5	0.1%
Sussex County	1,694	17.4%	571	5.9%	2,346	24.1%	0	0.0%
State	7,424	18.8%	2,544	6.4%	6,770	17.2%	16	0.0%
	Child Support/Determination of Parentage		Child Support/Revocation		Child Support/Registration of Foreign Order		Child Support/Notice of Admin. Adjustment	
New Castle County	299	1.4%	870	4.1%	232	1.1%	1,490	7.0%
Kent County	53	0.6%	361	4.3%	74	0.9%	533	6.3%
Sussex County	67	0.7%	322	3.3%	87	0.9%	1,223	12.5%
State	419	1.1%	1,553	3.9%	393	1.0%	3,246	8.2%
	Child Support/Other Support		Custody		Dependency/Neglect		Visitation	
New Castle County	15	0.1%	1,965	9.2%	210	1.0%	388	1.8%
Kent County	8	0.1%	818	9.7%	84	1.0%	140	1.7%
Sussex County	32	0.3%	801	8.2%	57	0.6%	145	1.5%
State	55	0.1%	3,584	9.1%	351	0.9%	673	1.7%
	Termination of Parental Rights		Civil Dissolution		Guardianship		Spousal Support	
New Castle County	137	0.6%	0	0.0%	1,025	4.8%	79	0.4%
Kent County	35	0.4%	0	0.0%	488	5.8%	27	0.3%
Sussex County	43	0.4%	0	0.0%	476	4.9%	9	0.1%
State	215	0.5%	0	0.0%	1,989	5.0%	115	0.3%
	Expungements (Juv .& Adult)		Imperiling Family Relationships		Protection from Abuse		Divorce/Annulment	
New Castle County	433	2.0%	28	0.1%	2,385	11.2%	2,162	10.2%
Kent County	136	1.6%	5	0.1%	1,062	12.6%	754	8.9%
Sussex County	157	1.6%	1	0.0%	710	7.3%	780	8.0%
State	726	1.8%	34	0.1%	4,157	10.5%	3,696	9.4%
	Rules to Show Cause/Other Civil Contempt		Minor to Marry		Miscellaneous Civil		Adoption	
New Castle County	539	2.5%	2	0.0%	208	1.0%	84	0.4%
Kent County	202	2.4%	0	0.0%	216	2.6%	18	0.2%
Sussex County	139	1.4%	2	0.0%	56	0.6%	32	0.3%
State	880	2.2%	4	0.0%	480	1.2%	134	0.3%
	Total							
New Castle County	21,271	100%						
Kent County	8,437	100%						
Sussex County	9,750	100%						
State	39,458	100%						

Source: Court Administrator, Family Court; Administrative Office of the Courts.

FAMILY COURT

Caseload Comparison - Fiscal Years 2015-2016 - Juvenile Delinquency Case Filings				
	2015	2016	Change	% Change
New Castle County	2,725	2,906	181	6.6%
Kent County	1,107	1,176	69	6.2%
Sussex County	1,167	1,027	-140	-12.0%
State	4,999	5,109	110	2.2%

Caseload Comparison - Fiscal Years 2015-2016 - Juvenile Delinquency Case Dispositions				
	2015	2016	Change	% Change
New Castle County	2,938	2,907	-31	-1.1%
Kent County	1,235	1,114	-121	-9.8%
Sussex County	1,146	1,084	-62	-5.4%
State	5,319	5,105	-214	-4.0%

Source: Court Administrator, Family Court; Administrative Office of the Courts.

FAMILY COURT

Caseload Breakdowns - Fiscal Year 2016 - Juvenile Delinquency Case Filings						
	Felony		Misdemeanor		Traffic	
New Castle County	620	21.3%	1,786	61.5%	216	7.4%
Kent County	203	17.3%	734	62.4%	113	9.6%
Sussex County	183	17.8%	613	59.7%	138	13.4%
State	1006	19.7%	3,133	61.3%	467	9.1%
	VOP				Total	
New Castle County	284	9.8%			2,906	100%
Kent County	126	10.7%			1,176	100%
Sussex County	93	9.1%			1,027	100%
State	503	9.8%			5,109	100%

Caseload Breakdowns - Fiscal Year 2016 - Juvenile Delinquency Case Dispositions						
	Felony		Misdemeanor		Traffic	
New Castle County	548	18.9%	1,911	65.7%	185	6.4%
Kent County	176	15.8%	733	65.8%	101	9.1%
Sussex County	141	13.0%	706	65.1%	151	13.9%
State	865	16.9%	3,350	65.6%	437	8.6%
	VOP				Total	
New Castle County	263	9.0%			2,907	100%
Kent County	104	9.3%			1,114	100%
Sussex County	86	7.9%			1,084	100%
State	453	8.9%			5,105	100%

VOP = Violations of Probation.

Source: Court Administrator, Family Court; Administrative Office of the Courts.

FAMILY COURT

Caseload Comparison - Fiscal Years 2015-2016 - Mediation Hearings Scheduled				
	2015	2016	Change	% Change
New Castle County	6,622	5,981	-641	-9.7%
Kent County	2,750	2,677	-73	-2.7%
Sussex County	3,226	3,132	-94	-2.9%
State	12,598	11,790	-808	-6.4%

Caseload Comparison - Fiscal Years 2015-2016 - Mediation Dispositions				
	2015	2016	Change	% Change
New Castle County	4,040	3,632	-408	-10.1%
Kent County	1,676	1,600	-76	-4.5%
Sussex County	2,013	2,006	-7	-0.4%
State	7,729	7,238	-491	-6.4%

Source: Court Administrator, Family Court; Administrative Office of the Courts.

FAMILY COURT

Caseload Comparison - Fiscal Years 2015-2016 - Total Case Filings				
	2015	2016	Change	% Change
New Castle County	24,644	27,381	2,737	11.1%
Kent County	10,098	10,262	164	1.6%
Sussex County	11,939	11,450	-489	-4.1%
State	46,681	49,093	2,412	5.2%

Caseload Comparison - Fiscal Years 2015-2016 - Total Case Dispositions				
	2015	2016	Change	% Change
New Castle County	24,710	26,340	1,630	6.6%
Kent County	9,803	10,276	473	4.8%
Sussex County	11,371	11,451	80	0.7%
State	45,884	48,067	2,183	4.8%

FY2016 Notes:

*A civil filing is defined as one petition or one single civil incident filed with the Family Court. In a divorce matter, although the petition may contain multiple ancillary matters to the divorce, it is counted as only one filing.

*A criminal or delinquency filing is defined as one incident filed against one individual or defendant. A single criminal or juvenile delinquency filing may be comprised of a single or of multiple charges relating to a single incident.

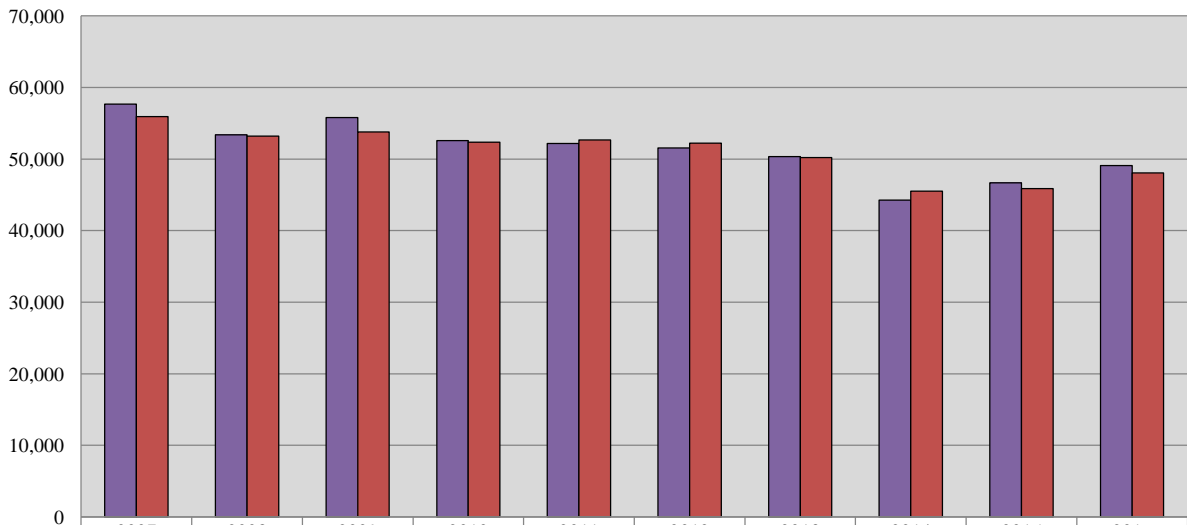
*Mediation is the process prior to adjudication in which a trained mediator attempts to assist the parties in reaching an agreement. If the parties are unable to reach an agreement, the matter is scheduled to be heard before a Commissioner or Judge.

*Custody, support, visitation, paternity, guardianship, imperiling family relations, and rule to show cause filings are scheduled for mediation unless bypass mediation rules apply as indicated in 13 Del. C. § 711A and 13 Del. C. § 728A; Family Court Procedures OCI-914 and OCI-902.

*Automatic Expungements/Pardons resulting in Automatic Juvenile Expungements are counted as filings in this report due to the amount of staff effort to process them. Although there is not a disposition from a Hearing Officer for Automatic Expungements, the directive letter from SBI is acted upon by our staff. Therefore, the resolution of these types of filings are added to the same month they are received in the Disposition sections of this report.

Source: Court Administrator, Family Court; Administrative Office of the Courts.

Family Court 10-Year Total Caseload Trend



	2007	2008	2009	2010	2011	2012	2013	2014	2015	2016
■ Filings	57672	53366	55797	52580	52189	51568	50364	44243	46681	49093
■ Dispositions	55920	53211	53772	52353	52661	52213	50191	45516	45884	48067

Fiscal Year

Note: The number of filings for Fiscal Year 2009 was amended.



COURT OF COMMON PLEAS
State of Delaware

2016 Annual Report Statistical Information

COURT OF COMMON PLEAS

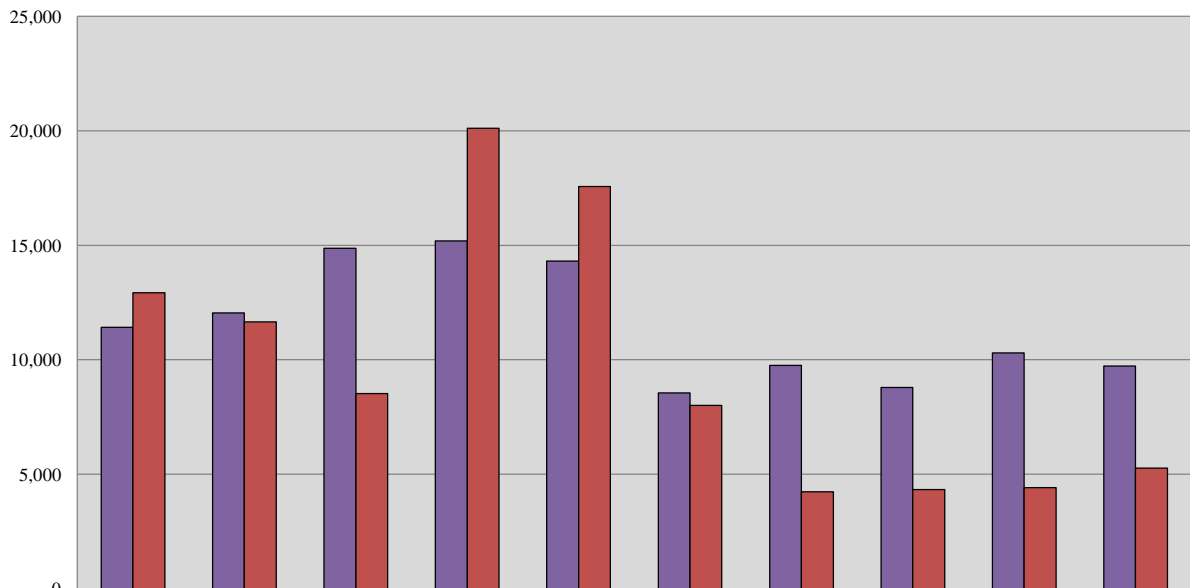
Caseload Summary - Fiscal Years 2015-2016 - Civil Case Filings				
	2015	2016	Change	% Change
New Castle County	6,169	5,727	-442	-7.2%
Kent County	2,014	1,887	-127	-6.3%
Sussex County	2,112	2,108	-4	-0.2%
State	10,295	9,722	-573	-5.6%

Caseload Summary - Fiscal Years 2015-2016 - Civil Case Dispositions				
	2015	2016	Change	% Change
New Castle County	2,602	2,952	350	13.5%
Kent County	748	1,014	266	35.6%
Sussex County	1,065	1,300	235	22.1%
State	4,415	5,266	851	19.3%

Caseload Breakdowns - Fiscal Year 2016 - Civil Case Filings						
	Complaints		Civil Judgments, Name Changes & Appeals		Total	
New Castle County	3,516	64.6%	2,211	35.4%	5,727	100%
Kent County	1,096	59.4%	791	40.6%	1,887	100%
Sussex County	1,252	62.7%	856	37.3%	2,108	100%
State	5,864	60.3%	3,858	39.7%	9,722	100%

Source: Court Administrator, Court of Common Pleas; Administrative Office of the Courts.

Court of Common Pleas 10-Year Civil Caseload Trend



	2007	2008	2009	2010	2011	2012	2013	2014	2015	2016
■ Filings	11,420	12,045	14,874	15,191	14,314	8,552	9,748	8,793	10,295	9,722
■ Dispositions	12,921	11,657	8,526	20,111	17,573	8,013	4,229	4,327	4,415	5,266

Fiscal Year

COURT OF COMMON PLEAS

Caseload Summary - Fiscal Years 2015-2016 - Criminal Misdemeanor Case Filings*

	2015	2016	Change	% Change
New Castle County	45,885	48,014	2,129	4.6%
Kent County	27,824	25,984	-1,840	-6.6%
Sussex County	29,467	29,827	360	1.2%
State	103,176	103,825	649	0.6%

Caseload Summary - Fiscal Years 2015-2016 - Criminal Misdemeanor Case Dispositions

	2015	2016	Change	% Change
New Castle County	40,192	37,970	-2,222	-5.5%
Kent County	23,084	18,244	-4,840	-21.0%
Sussex County	24,090	21,459	-2,631	-10.9%
State	87,366	77,673	-9,693	-11.1%

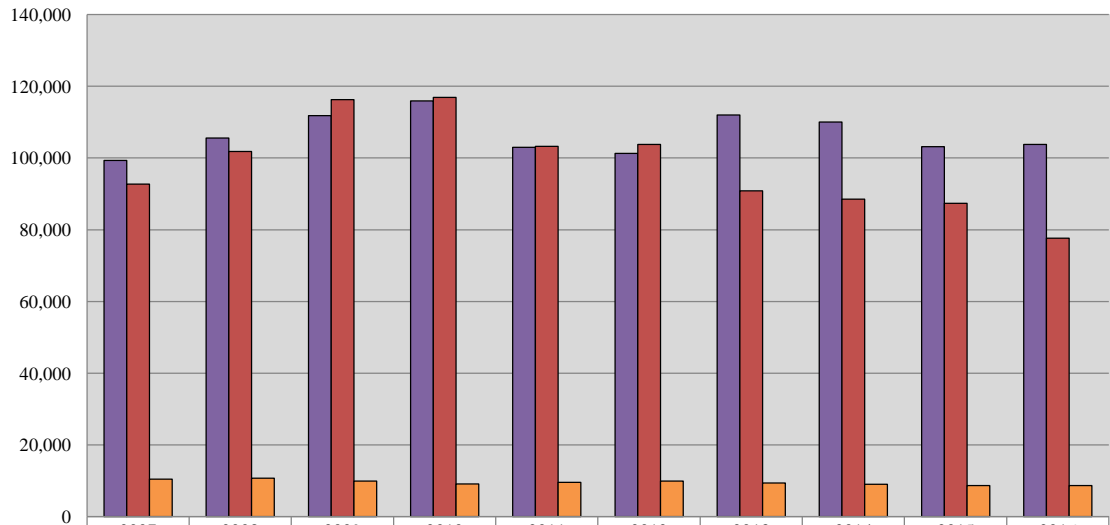
Caseload Summary - Fiscal Years 2015-2016 - Criminal Preliminary Hearing Case Filings

	2015	2016	Change	% Change
New Castle County	4,389	4,404	15	0.3%
Kent County	1,936	1,976	40	2.1%
Sussex County	2,296	2,309	13	0.6%
State	8,621	8,689	68	0.8%

*Includes Contempt of Court cases.

Source: Court Administrator, Court of Common Pleas; Administrative Office of the Courts.

Court of Common Pleas 10-Year Criminal Caseload Trend



	2007	2008	2009	2010	2011	2012	2013	2014	2015	2016
■ Misdemeanor Filings	99,345	105,607	111,797	115,882	102,939	101,284	112,004	110,071	103,176	103,825
■ Misdemeanor Dispositions	92,691	101,823	116,278	116,926	103,209	103,802	90,873	88,507	87,366	77,673
■ Preliminary Hearings	10,413	10,720	9,940	9,066	9,590	9,917	9,398	9,011	8,621	8,689

Fiscal Year

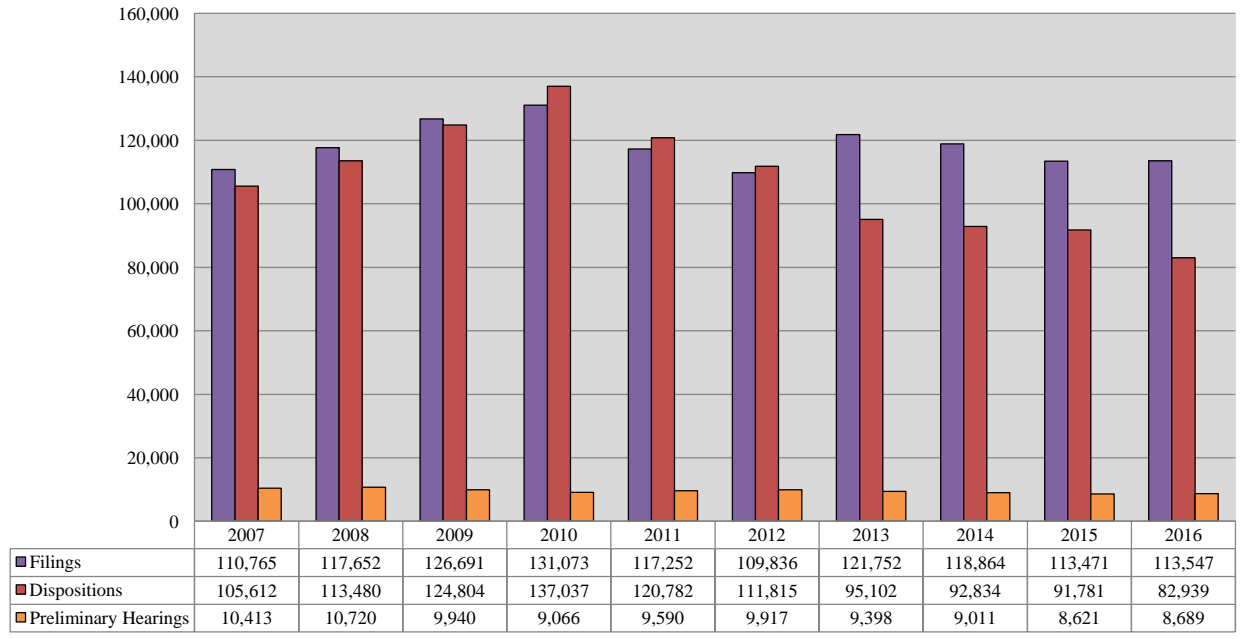
COURT OF COMMON PLEAS

Caseload Summary - Fiscal Years 2015-2016 - Total Criminal Misdemeanor and Civil Case Filings				
	2015	2016	Change	% Change
New Castle County	52,054	53,741	1,687	3.2%
Kent County	29,838	27,871	-1,967	-6.6%
Sussex County	31,579	31,935	356	1.1%
State	113,471	113,547	76	0.1%

Caseload Summary - Fiscal Years 2015-2016 - Total Criminal Misdemeanor and Civil Case Dispositions				
	2015	2016	Change	% Change
New Castle County	42,794	40,922	-1,872	-4.4%
Kent County	23,832	19,258	-4,574	-19.2%
Sussex County	25,155	22,759	-2,396	-9.5%
State	91,781	82,939	-8,842	-9.6%

Source: Court Administrator, Court of Common Pleas; Administrative Office of the Courts.

Court of Common Pleas 10-Year Total Caseload Trend (Civil & Criminal)



Fiscal Year



JUSTICE OF THE PEACE COURT
State of Delaware

2016 Annual Report Statistical Information

JUSTICE OF THE PEACE COURT

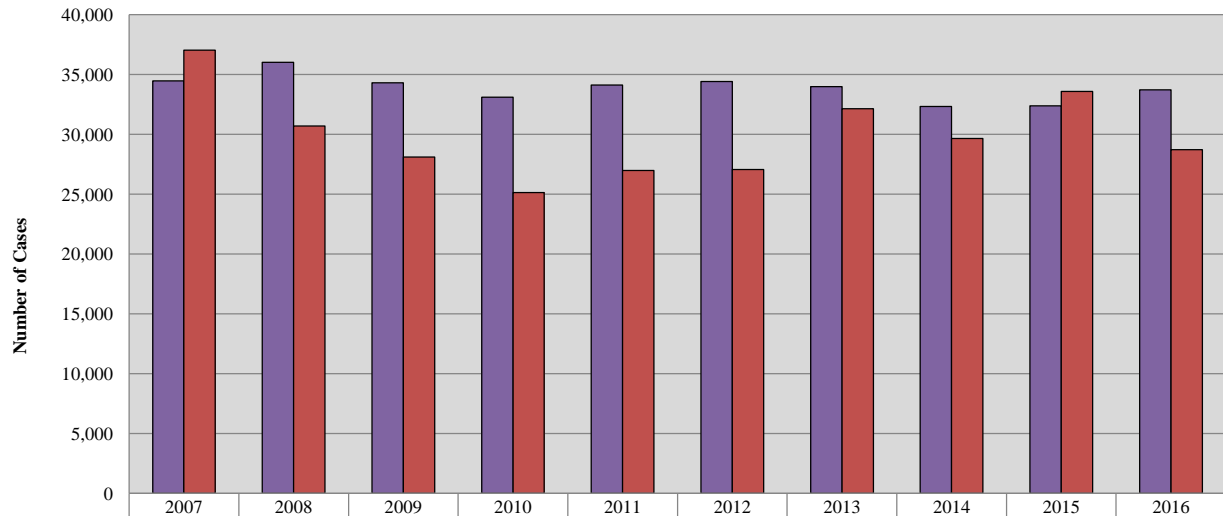
Caseload Summary - Fiscal Year 2016 - Civil Cases		
	Filings	Dispositions
New Castle County		
Court 9	2,073	1,789
Court 13	15,886	14,227
Kent County		
Court 16	8,201	6,652
Sussex County		
Court 17	7,566	6,041
State	33,726	28,709

Caseload Comparison - Fiscal Years 2015-2016 - Civil Case Filings				
	2015	2016	Change	% Change
New Castle County				
Court 9	2,034	2,073	39	1.9%
Court 13	15,511	15,886	375	2.4%
Kent County				
Court 16	7,666	8,201	535	7.0%
Sussex County				
Court 17	7,170	7,566	396	5.5%
State	32,381	33,726	1,345	4.2%

Caseload Comparison - Fiscal Years 2015-2016 - Civil Case Dispositions				
	2015	2016	Change	% Change
New Castle County				
Court 9	2,200	1,789	-411	-18.7%
Court 13	18,514	14,227	-4,287	-23.2%
Kent County				
Court 16	6,725	6,652	-73	-1.1%
Sussex County				
Court 17	6,139	6,041	-98	-1.6%
State	33,578	28,709	-4,869	-14.5%

Source: Chief Magistrate's Office, Justice of the Peace Court; Administrative Office of the Courts.

JP Court 10-Year Civil Caseload Trend



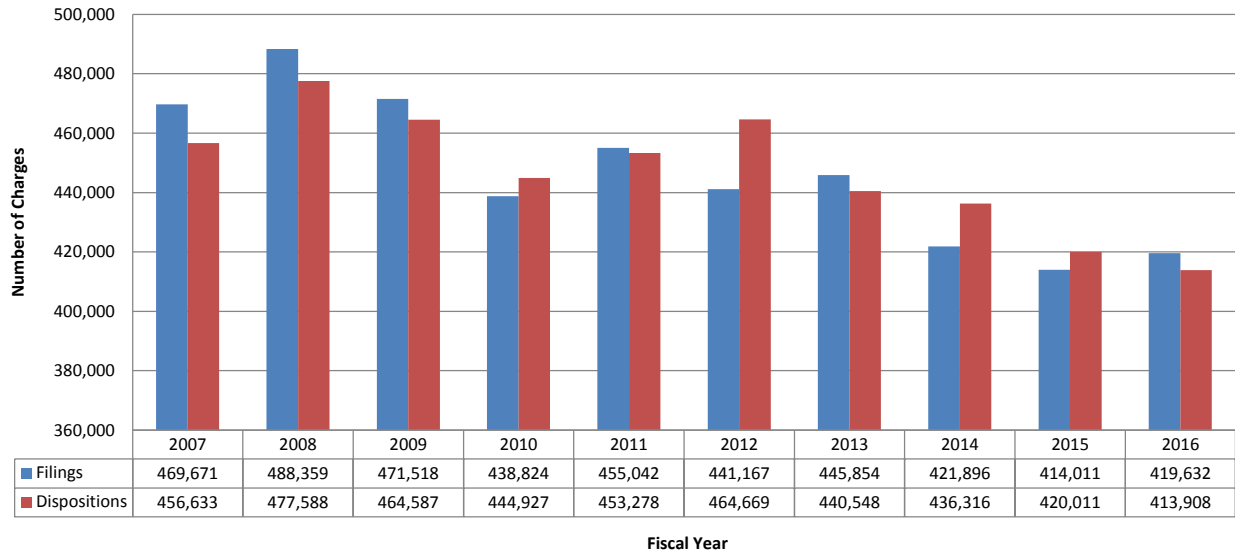
	2007	2008	2009	2010	2011	2012	2013	2014	2015	2016
■ Filings	34,453	36,016	34,297	33,088	34,127	34,416	33,981	32,321	32,381	33,726
■ Dispositions	37,033	30,690	28,108	25,134	26,983	27,071	32,144	29,657	33,578	28,709

Fiscal Year

Caseload Breakdowns - Fiscal Year 2016 - Civil Case Filings							
	Complaints		Landlord/Tenant		Total		
New Castle County							
Court 9	1,689	81.5%	384	18.5%	2,073	100%	
Court 13	4,686	29.5%	11,200	70.5%	15,886	100%	
Kent County							
Court 16	4,589	56.0%	3,612	44.0%	8,201	100%	
Sussex County							
Court 17	4,550	60.1%	3,016	39.9%	7,566	100%	
State	15,514	46.0%	18,212	54.0%	33,726	100%	

Source: Chief Magistrate's Office, Justice of the Peace Court; Administrative Office of the Courts.

JP Court 10-Year Criminal and Traffic Caseload Trend*



*Criminal filings and disposition information is by charge.

JUSTICE OF THE PEACE COURT

Caseload Breakdowns - Fiscal Year 2016 - Criminal and Traffic Filings (Defendants)										
	Title 7 - Fish/Game		Title 11 - Criminal		Title 21 - Traffic		Miscellaneous		Total	
New Castle County										
Court 9	87	2.0%	259	5.9%	3,886	88.8%	145	3.3%	4,377	100%
Court 10	93	1.8%	221	4.2%	3,215	61.4%	1,704	32.6%	5,233	100%
Court 11	82	0.2%	8,458	22.5%	26,972	71.6%	2,154	5.7%	37,666	100%
Court 20	21	0.3%	2,637	33.8%	4,301	55.1%	852	10.9%	7,811	100%
Kent County										
Court 6	14	0.2%	222	3.9%	5,344	93.8%	115	2.0%	5,695	100%
Court 7	131	0.7%	4,167	21.8%	13,465	70.4%	1,363	7.1%	19,126	100%
Court 8	0	0%	110	3.7%	2,800	93.7%	77	2.6%	2,987	100%
Sussex County										
Court 1	44	1.4%	134	4.3%	2,601	82.9%	357	11.4%	3,136	100%
Court 2	86	0.5%	9,093	58.0%	4,975	31.7%	1,523	9.7%	15,677	100%
Court 3	377	3.5%	3,065	28.7%	6,074	57.0%	1,147	10.8%	10,663	100%
Court 4	10	0.1%	396	5.5%	6,606	91.8%	184	2.6%	7,196	100%
Court 14	1	0.1%	51	2.8%	1,717	93.1%	75	4.1%	1,844	100%
State w/o VAC	946	0.8%	28,813	23.7%	81,956	67.5%	9,696	8.0%	121,411	100%
VAC	1,312	1.0%	0	0%	132,723	97.8%	1,669	1.2%	135,704	100%
State with VAC	2,258	0.9%	28,813	11.2%	214,679	83.5%	11,365	4.4%	257,115	100%

VAC = Voluntary Assessment Center.

Source: Chief Magistrate's Office, Justice of the Peace Court; Administrative Office of the Courts.

JUSTICE OF THE PEACE COURT

Caseload Breakdowns - Fiscal Year 2016 - Criminal and Traffic Filings (Charges)

	Title 7 - Fish/Game		Title 11 - Criminal		Title 21 - Traffic		Miscellaneous		Total	
New Castle County										
Court 9	216	2.7%	412	5.1%	7,204	89.6%	211	2.6%	8,043	100%
Court 10	110	1.3%	300	3.6%	5,940	71.0%	2,018	24.1%	8,368	100%
Court 11	165	0.2%	18,484	22.0%	60,515	71.9%	5,041	6.0%	84,205	100%
Court 20	32	0.2%	5,325	32.4%	9,312	56.7%	1,741	10.6%	16,410	100%
Kent County										
Court 6	26	0.2%	425	3.8%	10,491	94.2%	199	1.8%	11,141	100%
Court 7	404	1.0%	9,620	23.3%	28,436	69.0%	2,759	6.7%	41,219	100%
Court 8	0	0%	143	2.5%	5,386	95.3%	123	2.2%	5,652	100%
Sussex County										
Court 1	63	1.0%	174	2.9%	5,395	88.6%	457	7.5%	6,089	100%
Court 2	135	0.3%	24,970	60.4%	11,380	27.5%	4,865	11.8%	41,350	100%
Court 3	1,178	3.9%	11,487	37.6%	14,700	48.1%	3,178	10.4%	30,543	100%
Court 4	12	0.1%	631	4.1%	14,171	93.2%	394	2.6%	15,208	100%
Court 14	4	0.1%	103	2.1%	4,577	94.4%	165	3.4%	4,849	100%
State w/o VAC	2,345	0.9%	72,074	26.4%	177,507	65.0%	21,151	7.7%	273,077	100%
VAC	1,552	1.1%	0	0%	142,817	97.4%	2,186	1.5%	146,555	100%
State with VAC	3,897	0.9%	72,074	17.2%	320,324	76.3%	23,337	5.6%	419,632	100%

VAC = Voluntary Assessment Center.

Source: Chief Magistrate's Office, Justice of the Peace Court; Administrative Office of the Courts.

JUSTICE OF THE PEACE COURT

Caseload Comparison - Fiscal Years 2015-2016 - Criminal and Traffic Filings (Defendants)				
	2015	2016	Change	% Change
New Castle County				
Court 9	3,525	4,377	852	24.2%
Court 10	3,028	5,233	2,205	72.8%
Court 11	38,974	37,666	-1,308	-3.4%
Court 20	7,902	7,811	-91	-1.2%
Kent County				
Court 6	5,463	5,695	232	4.2%
Court 7	19,796	19,126	-670	-3.4%
Court 8	2,591	2,987	396	15.3%
Sussex County				
Court 1	3,576	3,136	-440	-12.3%
Court 2	15,749	15,677	-72	-0.5%
Court 3	11,120	10,663	-457	-4.1%
Court 4	7,967	7,196	-771	-9.7%
Court 14	1,704	1,844	140	8.2%
State Without VAC	121,395	121,411	16	0.0%
VAC	129,227	135,704	6,477	5.0%
State with VAC	250,622	257,115	6,493	2.6%

VAC = Voluntary Assessment Center.

Source: Chief Magistrate's Office, Justice of the Peace Court; Administrative Office of the Courts.

JUSTICE OF THE PEACE COURT

Caseload Comparison - Fiscal Years 2015-2016 - Criminal and Traffic Filings (Charges)

	2015	2016	Change	% Change
New Castle County				
Court 9	6,627	8,043	1,416	21.4%
Court 10	3,828	8,368	4,540	118.6%
Court 11	86,659	84,205	-2,454	-2.8%
Court 20	16,599	16,410	-189	-1.1%
Kent County				
Court 6	11,238	11,141	-97	-0.9%
Court 7	43,353	41,219	-2,134	-4.9%
Court 8	5,262	5,652	390	7.4%
Sussex County				
Court 1	6,489	6,089	-400	-6.2%
Court 2	41,517	41,350	-167	-0.4%
Court 3	31,317	30,543	-774	-2.5%
Court 4	17,212	15,208	-2,004	-11.6%
Court 14	4,334	4,849	515	11.9%
State Without VAC	274,435	273,077	-1,358	-0.5%
VAC	139,576	146,555	6,979	5.0%
State with VAC	414,011	419,632	5,621	1.4%

VAC = Voluntary Assessment Center.

Source: Chief Magistrate's Office, Justice of the Peace Court; Administrative Office of the Courts.

JUSTICE OF THE PEACE COURT

Court Rankings - Fiscal Years 2015-2016 - Total Cases Filed* (Charges)				
2015 Rank w/o VAC	2016 Rank w/o VAC		2016 Total Filings	2016 % of Total w/o VAC
1	1	Court 11	84,205	27.4%
3	2	Court 2	41,350	13.5%
2	3	Court 7	41,219	13.4%
4	4	Court 3	30,543	10.0%
6	5	Court 20	16,410	5.3%
7	6	Court 13	15,886	5.2%
5	7	Court 4	15,208	5.0%
8	8	Court 6	11,141	3.6%
9	9	Court 9	10,116	3.3%
15	10	Court 10	8,368	2.7%
10	11	Court 16	8,201	2.7%
11	12	Court 17	7,566	2.5%
12	13	Court 1	6,089	2.0%
13	14	Court 8	5,652	1.8%
14	15	Court 14	4,849	1.6%
2016 State w/o VAC			306,803	100%
2016 VAC			146,555	
2016 State w/ VAC			453,358	

*Includes civil, criminal, and traffic filings.

VAC = Voluntary Assessment Center.

Source: Chief Magistrate's Office, Justice of the Peace Court; Administrative Office of the Courts.

JUSTICE OF THE PEACE COURT

Court Rankings - Fiscal Years 2015-2016 - Total Case Filings (Defendants)				
2015 Rank w/o VAC	2016 Rank w/o VAC		2015 Total Filings	2015 % of Total w/o VAC
1	1	Court 11	37,666	24.3%
2	2	Court 7	19,126	12.3%
4	3	Court 13	15,886	10.2%
3	4	Court 2	15,677	10.1%
5	5	Court 3	10,663	6.9%
8	6	Court 16	8,201	5.3%
7	7	Court 20	7,811	5.0%
9	8	Court 17	7,566	4.9%
6	9	Court 4	7,196	4.6%
10	10	Court 9	6,450	4.2%
11	11	Court 6	5,695	3.7%
10	12	Court 10	5,233	3.4%
12	13	Court 1	3,136	2.0%
14	14	Court 8	2,987	2.2%
15	15	Court 14	1,844	0.6%
2016 State w/o VAC			155,137	100%
2016 VAC			135,704	
2016 State w/ VAC			290,841	

VAC = Voluntary Assessment Center.

Source: Chief Magistrate's Office, Justice of the Peace Court; Administrative Office of the Courts.

JUSTICE OF THE PEACE COURT

Caseload Comparison - Fiscal Years 2015-2016 - Total Cases Filed (Charges)				
	2015	2015	Change	% Change
Criminal & Traffic	414,011	419,632	5,621	1.4%
Civil	32,381	33,726	1,345	4.2%
Total	446,392	453,358	6,966	1.6%

Caseload Comparison - Fiscal Years 2015-2016 - Total Cases Disposed (Charges)				
	2015	2016	Change	% Change
Criminal & Traffic	420,011	413,908	-6,103	-1.5%
Civil	33,578	28,709	-4,869	-14.5%
Total	453,589	442,617	-10,972	-2.4%

Source: Chief Magistrate's Office, Justice of the Peace Court; Administrative Office of the Courts.

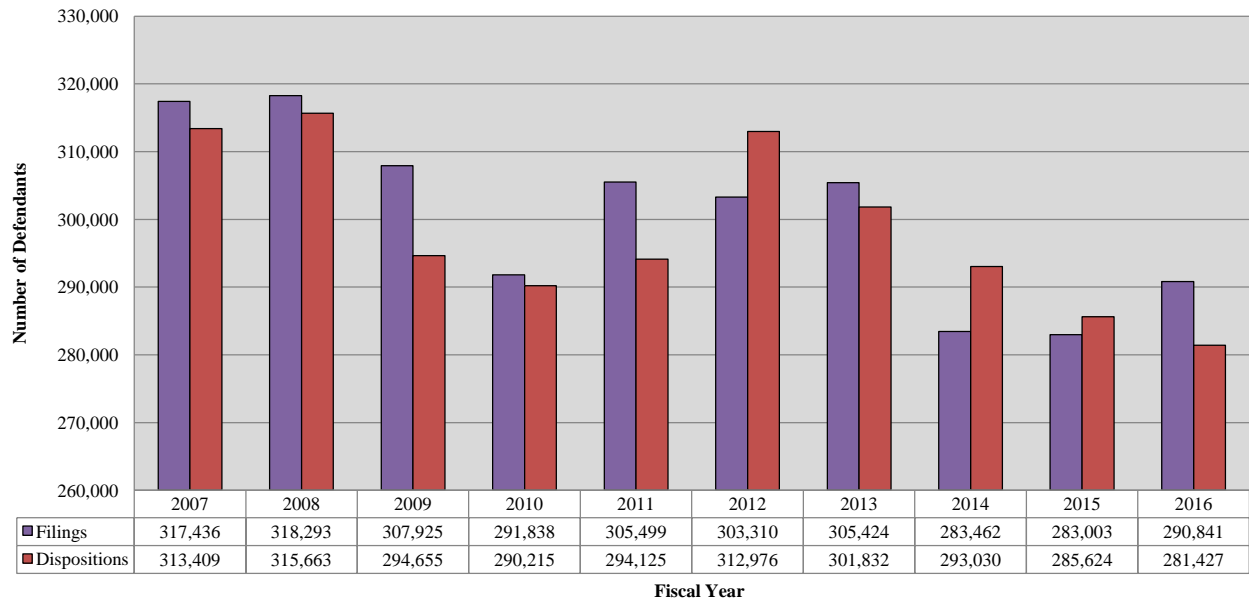
JUSTICE OF THE PEACE COURT

Caseload Comparison - Fiscal Years 2015-2016 - Total Case Filings (Defendants)				
	2015	2016	Change	% Change
Criminal & Traffic	271,443	257,115	-14,328	-5.3%
Civil	33,981	33,726	-255	-0.8%
Total	305,424	290,841	-14,583	-4.8%

Caseload Comparison - Fiscal Years 2015-2016 - Total Cases Dispositions (Defendants)				
	2015	2016	Change	% Change
Criminal & Traffic	269,688	252,718	-16,970	-6.3%
Civil	32,144	28,709	-3,435	-10.7%
Total	301,832	281,427	-20,405	-6.8%

Source: Chief Magistrate's Office, Justice of the Peace Court; Administrative Office of the Courts.

**JP Court 10-Year Total Caseload Trend*
(Civil, Criminal & Traffic)**



*Criminal filings and disposition information is by defendant.



ALDERMAN'S COURTS
State of Delaware

2016 Annual Report Statistical Information

ALDERMAN'S COURTS*

Caseload Comparison - Fiscal Years 2015-2016 - Total Filings				
	2015	2016	Change	% Change
New Castle County				
Newark	12,515	11,571	-944	-7.5%
Newport	6,843	7,426	583	8.5%
Sussex County				
Bethany Beach	1,761	2,634	873	49.6%
Dewey Beach	520	545	25	4.8%
Laurel	3,210	3,637	427	13.3%
Rehoboth Beach	2,102	1,825	-277	-13.2%
State	26,951	27,638	687	2.5%

Caseload Comparison - Fiscal Years 2015-2016 - Total Dispositions				
	2015	2016	Change	% Change
New Castle County				
Newark	13,631	12,138	-1,493	-11.0%
Newport	6,843	7,426	583	8.5%
Sussex County				
Bethany Beach	1,761	2,634	873	49.6%
Dewey Beach	866	787	-79	-9.1%
Laurel	3,073	3,291	218	7.1%
Rehoboth Beach	2,227	2,506	279	12.5%
State	28,401	28,782	381	1.3%

The unit of count for criminal and traffic cases is the charge. For example, a defendant with three charges disposed of is counted as three dispositions.

*Alderman's Courts are not part of the Delaware court system. They are independent entities within their respective Municipalities. However, cases may be transferred or appealed to a State court.

Source: Alderman's Courts; Administrative Office of the Courts.