

# Delaware Courts Wireless Access FAQs

---

Prepared by Judicial Information Center Helpdesk, 302-323-5369

[Is wireless Internet access available in the State of Delaware Courthouses?](#)

[How do I connect my laptop to State-Guest-Net?](#)

[What if my internet browser on my laptop gets an error and does not open to the Terms and Conditions of Use acceptance page?](#)

[How do I connect my Android Smartphone to State-Guest-Net?](#)

[How do I connect my iPad or iPhone to State-Guest-Net?](#)


[What about State-Net wireless access?](#)

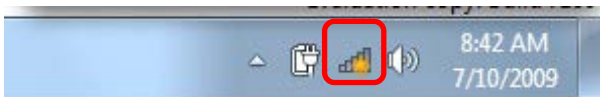
## Is wireless Internet access available in the State of Delaware Courthouses?

State-Guest-Net is a free wireless access point available for public use in the New Castle County Courthouse, Kent County Courthouse, Sussex County Courthouse, and Family Court Kent and Sussex Courthouses.

[Back to the Top](#)

## How do I connect my laptop to State-Guest-Net?

1. **Open** "Connect to a Network" by **Clicking** the wireless icon (  ) in the system taskbar.



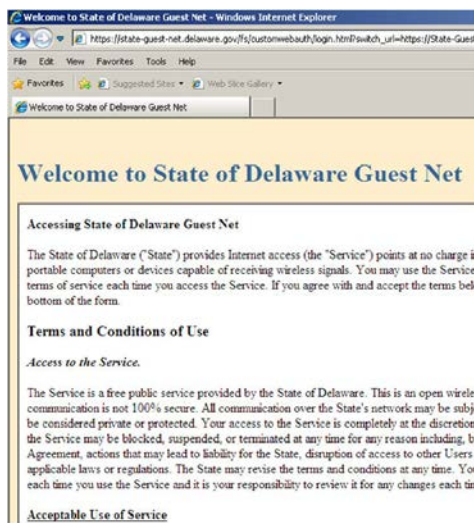
2. The utility will display any available wireless networks in your area.



3. In the list of available wireless networks, **Click on “State-Guest-Net”**, and then **Click “Connect.”**

Note: You will not actually be connected until you accept the disclaimer and the only way for the disclaimer to appear is by opening an Internet browser.

4. **Open Internet Explorer** to read and accept the **Terms and Conditions of Use**.



5. After you have read the **Terms and Conditions of Use**, **Click “Accept.”**



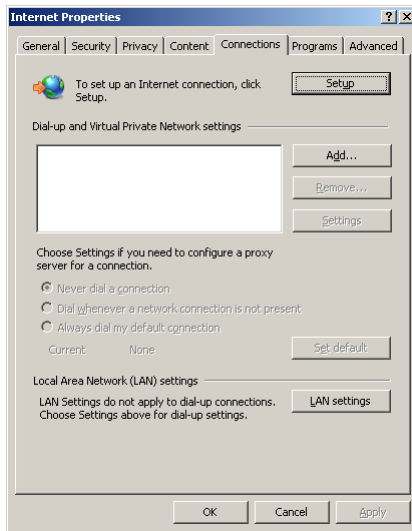
6. Once you have accepted the disclaimer you will have wireless access.

[Back to the Top](#)

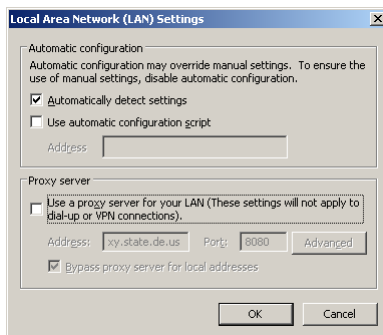
## What if my internet browser on my laptop gets an error and does not open to the Terms and Conditions of Use acceptance page?

*Note:* You may have a preconfigured proxy server on your laptop. Follow these steps to configure your Internet options, disable a proxy server and enable automatic configuration.

1. Close all Internet Explorer windows.
2. **Click on the Start button, Open the Control Panel, Internet Options. Click on the “Connections Tab”, Click on “Lan settings” at the bottom.**



3. **Check “Automatically detect settings” and Uncheck “Use a proxy server for your LAN”.**



4. Reopen Internet Explorer and follow instructions to read and accept the Terms and Conditions of Use.

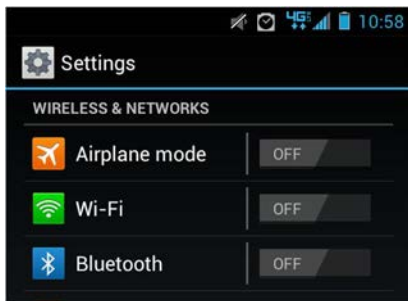
[Back to the Top](#)

## How do I connect my Android Smartphone to State-Guest-Net?

1. **Tap** the “Settings icon” to open your Smartphone Settings. 

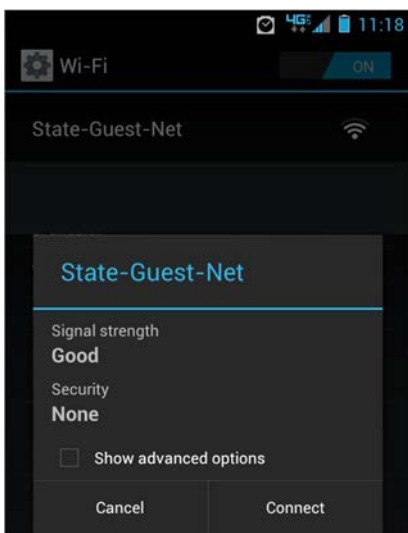


2. If Wi-Fi is **OFF**, **Slide** the Wi-Fi switch to the **ON** position.

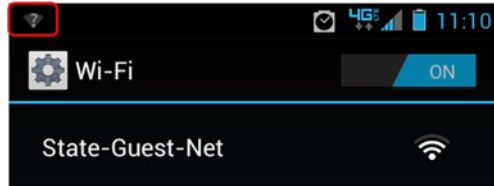


The device scans for available Wi-Fi networks and displays the names of those it finds. Secured networks are indicated with a Lock icon. *Note:* State-Guest-Net is unsecured.

3. **Tap** the “State-Guest-Net” network name, **Click Connect**.



4. You are now connected to **State-Guest-Net** but will still need to read and accept the **Terms and Conditions of Use** before you have internet access:
  - a. You may see a question mark symbol at the top left of your Android phone. **Touch** the “?” and slide downward to reveal the acceptance screen,



- b. **OR** open an Internet browser.



5. Read and Accept the **Terms and Conditions of Use**. You are now connected to State-Guest-Net.

[Back to the Top](#)

## How do I connect my iPad or iPhone to State-Guest-Net?

1. From the iPad/iPhone main screen, **Tap Settings**.
2. **Tap Wi-Fi**

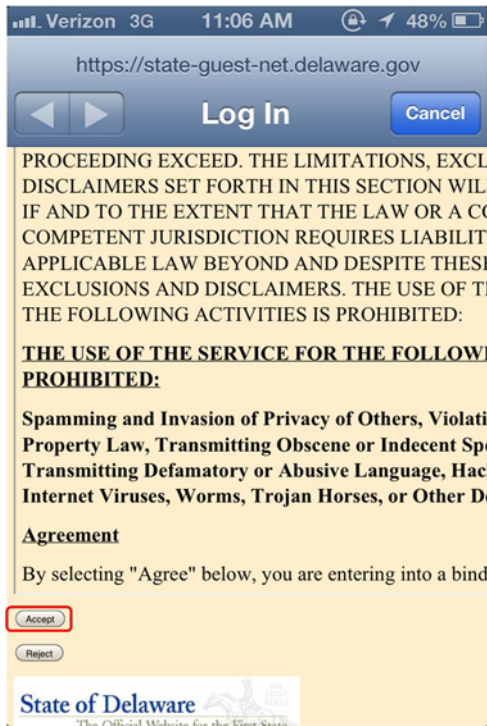




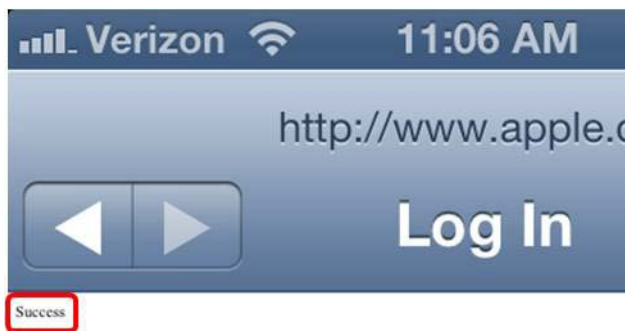
3. If Wi-Fi is **OFF**, turn it on by **Tapping** the **ON/OFF** icon.
4. Available Wi-Fi networks appear under "Choose a Network..."



5. **Tap** on the left side of "State-Guest-Net" Wi-Fi network to join. *Note:* Tapping on the right will bring up the network settings screen for "State-Guest-Net" which is not needed.
6. Once connected a Log In screen will appear. Read the **Terms and Conditions of Use** and **Tap** on **Accept**.



7. You have successfully connected to "State-Guest-Net". You will see a very small "Success" message.



[Back to the Top](#)

## What about State-Net wireless access?

State-Net is available only for those devices previously defined to the State's network and for individuals with email addresses ending in "state.de.us".

[Back to the Top](#)