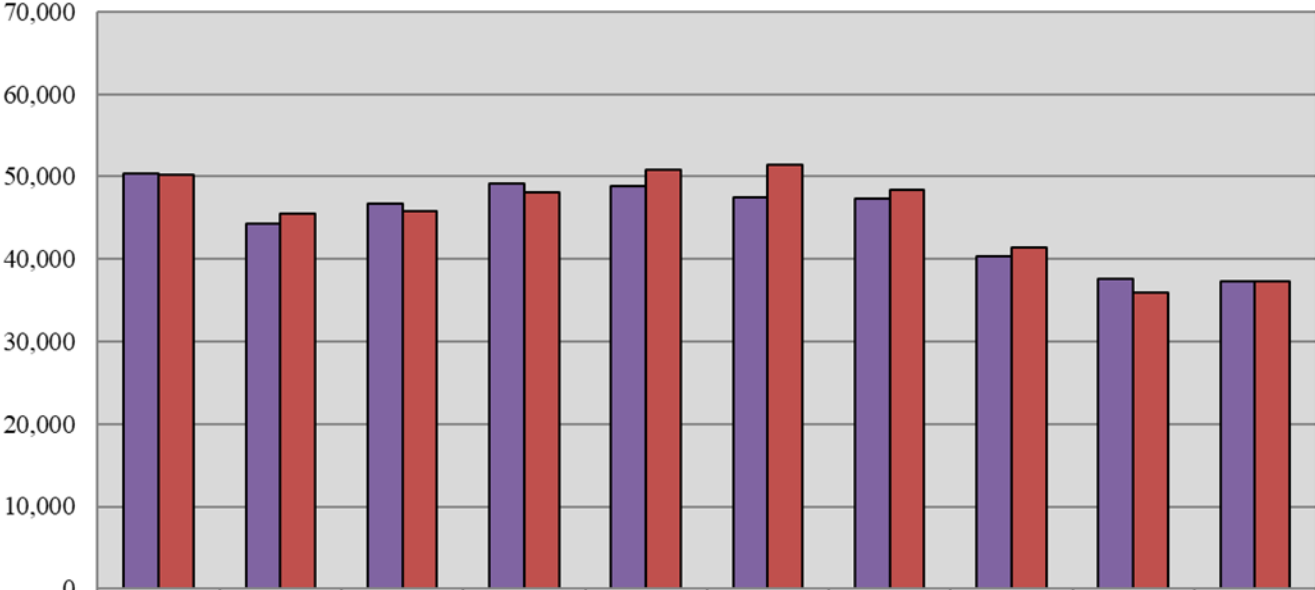


Family Court 10-Year Total Caseload Trend



	2013	2014	2015	2016	2017	2018	2019	2020	2021	2022
■ Filings	50,364	44,243	46,681	49,093	48,834	47,469	47,383	40,331	37,567	37,259
■ Dispositions	50,191	45,516	45,884	48,067	50,869	51,400	48,462	41,371	35,901	37,295

Fiscal Year