

COURT OF CHANCERY
State of Delaware

2022 Annual Report Statistical Information

COURT OF CHANCERY

Caseload Comparison - Fiscal Years 2021-2022 - Civil Filings

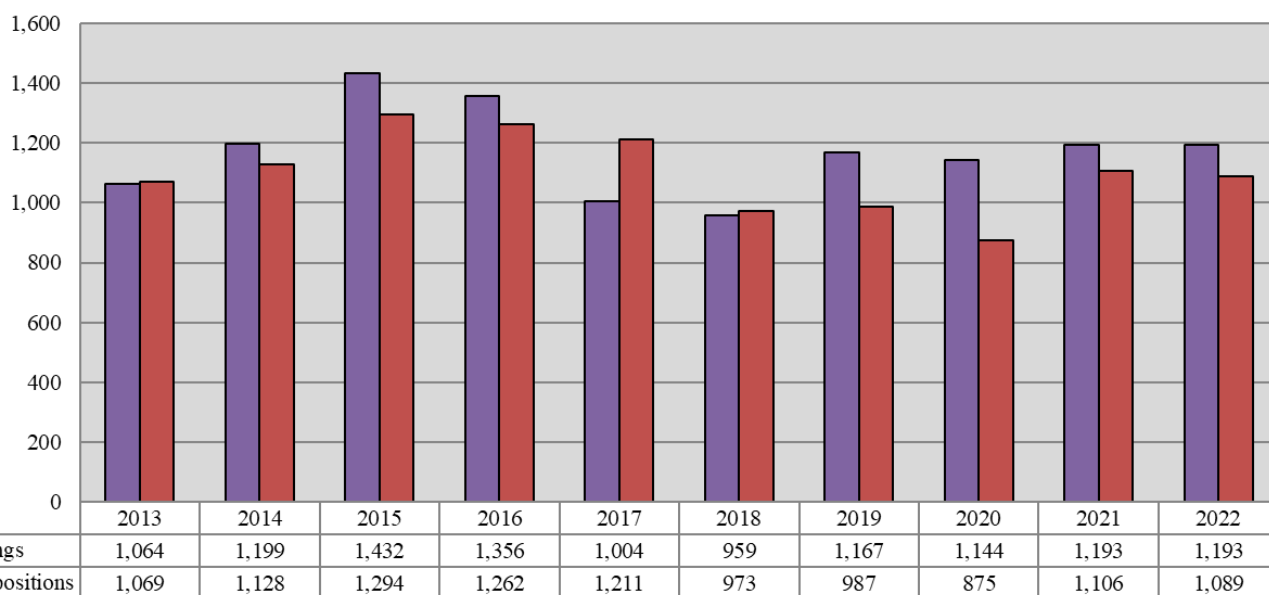
	2021	2022	Change	% Change
State	1,193	1,193 *	0	0.0%

*Filings include reactivated cases.

Caseload Comparison - Fiscal Years 2021-2022 - Civil Dispositions

	2021	2022	Change	% Change
State	1,106	1,089	-17	-1.5%

Court of Chancery 10-Year Civil Caseload Trend



Fiscal Year

COURT OF CHANCERY

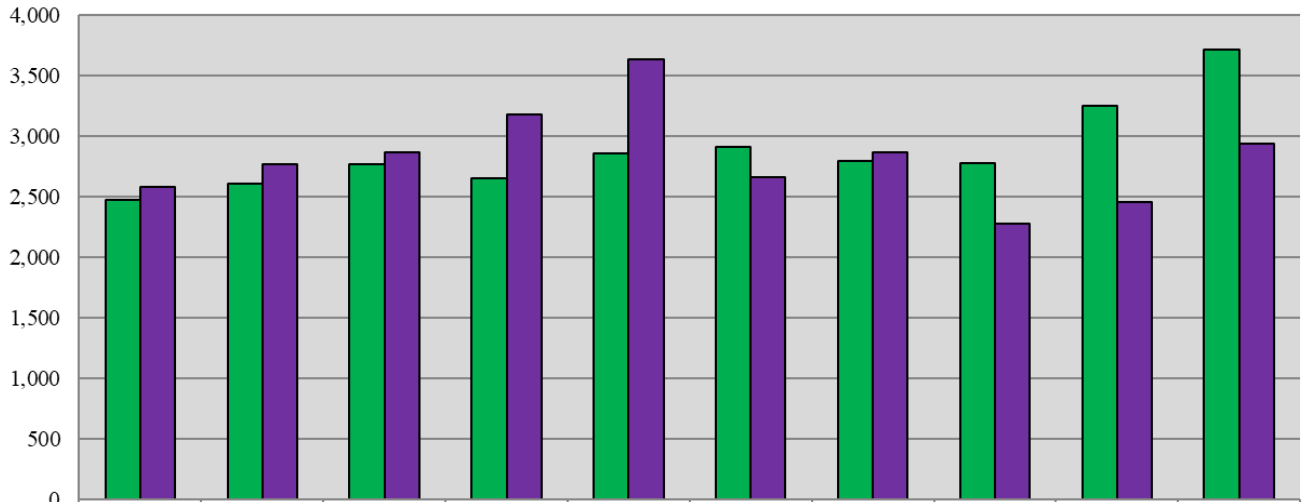
Caseload Comparison - Fiscal Years 2021-2022 - Estates Filings

	2021	2022	Change	% Change
State	3,250	3,717	467	14.4%

Caseload Comparison - Fiscal Years 2021-2022 - Estates Dispositions

	2021	2022	Change	% Change
State	2,451	2,940	489	20.0%

Court of Chancery 10-Year Estates Caseload Trend



Caseload Comparison - Fiscal Years 2021-2022 - Miscellaneous Matters Filings

	2021	2022	Change	% Change
State	329	326	-3	-0.9%

Caseload Comparison - Fiscal Years 2021-2022 - Miscellaneous Matters Dispositions

	2021	2022	Change	% Change
State	408	383	-25	-6.1%

Caseload Breakdown - Fiscal Year 2022 - Miscellaneous Matters Filings

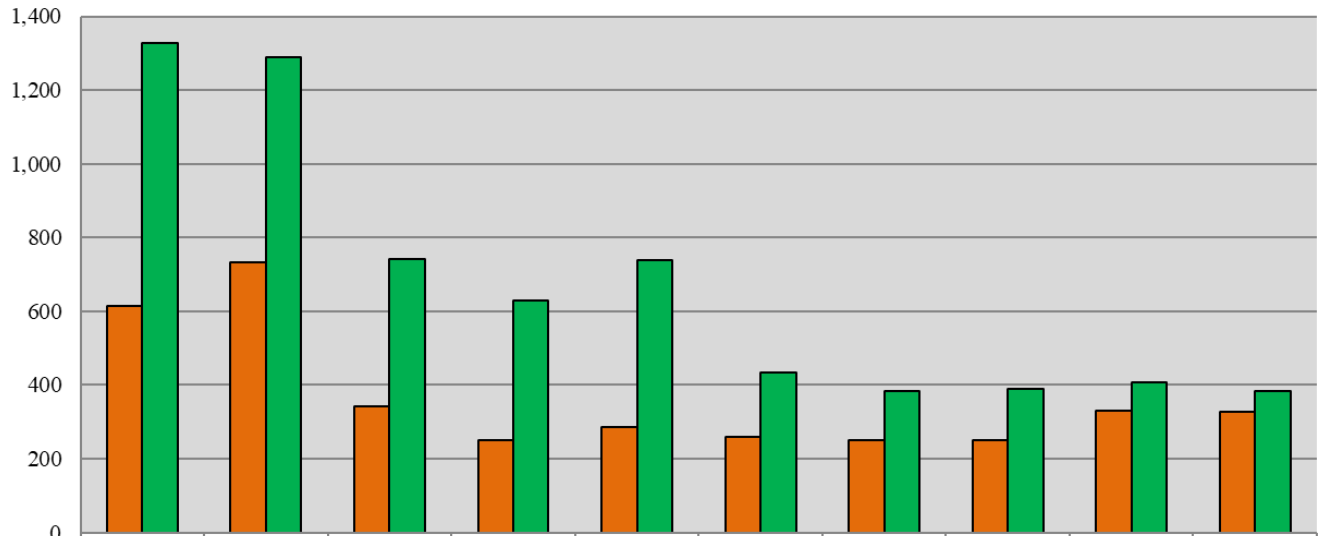
	Guardians for Minors		Guardians for Infirm		Trusts		Other Matters		Total	
State	32	9.8%	291	89.3%	0	0.0%	3	0.9%	326	100%

Caseload Breakdown - Fiscal Year 2022 - Miscellaneous Matters Dispositions

	Guardians for Minors		Guardians for Infirm		Trusts		Other Matters		Total	
State	148	38.6%	216	56.4%	17	4.4%	2	0.5%	383	100%

Source: Register in Chancery; Administrative Office of the Courts.

Court of Chancery 10-Year Miscellaneous Caseload Trend



■ Filings	615	733	341	250	286	259	252	251	329	326
■ Dispositions	1,328	1,290	741	628	740	433	385	389	408	383

Fiscal Year

COURT OF CHANCERY

Caseload Comparison - Fiscal Years 2021-2022 - Total Case Filings*

	2021	2022	Change	% Change
State	4,772	5,236	464	9.7%

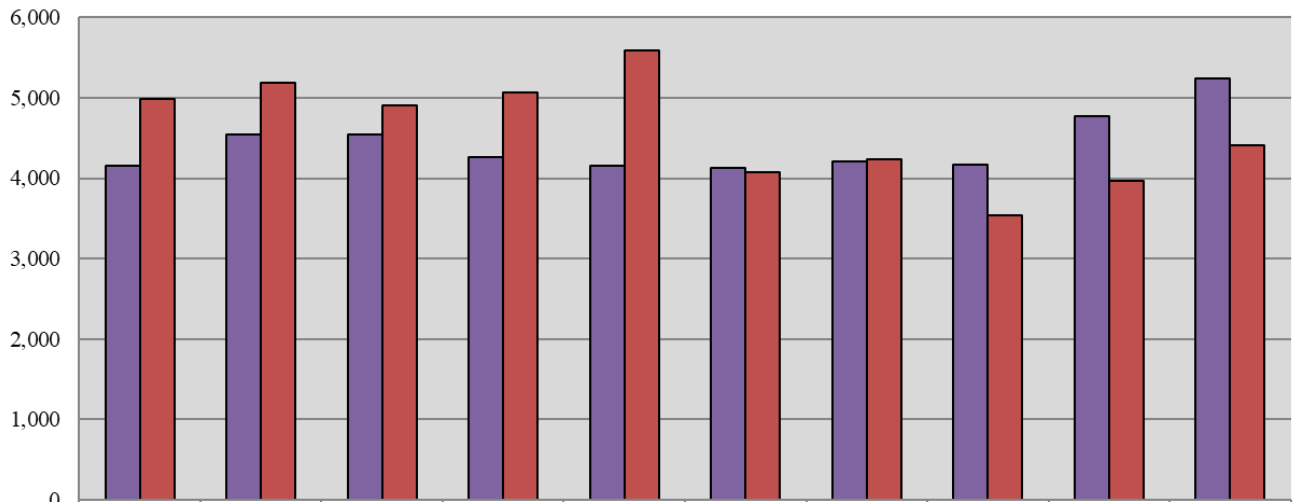
Caseload Comparison - Fiscal Years 2021-2022 - Total Case Dispositions*

	2021	2022	Change	% Change
State	3,965	4,412	447	11.3%

*Total includes Civil, Miscellaneous, and Estates.

Source: Registers in Chancery; Registers of Wills; Administrative Office of the Courts.

Court of Chancery 10-Year Total Caseload Trend (Civil, Miscellaneous & Estates)



	2013	2014	2015	2016	2017	2018	2019	2020	2021	2022
■ Filings	4,155	4,537	4,542	4,255	4,149	4,131	4,211	4,169	4,772	5,236
■ Dispositions	4,979	5,183	4,905	5,070	5,584	4,069	4,240	3,539	3,965	4,412

Fiscal Year