

COURT OF COMMON PLEAS  
State of Delaware

2022 Annual Report Statistical Information

## COURT OF COMMON PLEAS

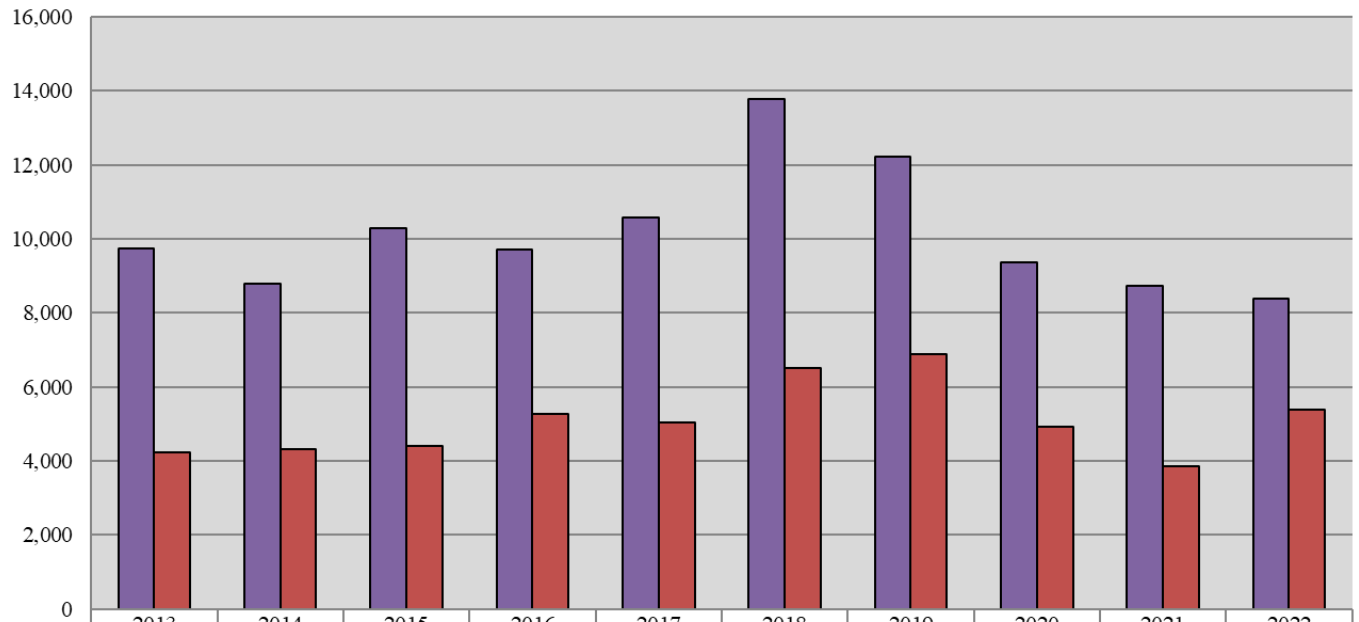
<b>Caseload Summary - Fiscal Years 2021-2022 - Civil Case Filings</b>				
	2021	2022	Change	% Change
New Castle County	5,337	4,990	-347	-6.5%
Kent County	1,794	1,629	-165	-9.2%
Sussex County	1,605	1,753	148	9.2%
<b>State</b>	<b>8,736</b>	<b>8,372</b>	<b>-364</b>	<b>-4.2%</b>

<b>Caseload Summary - Fiscal Years 2021-2022 - Civil Case Dispositions</b>				
	2021	2022	Change	% Change
New Castle County	2,274	3,261	987	43.4%
Kent County	822	1,014	192	23.4%
Sussex County	763	1,097	334	43.8%
<b>State</b>	<b>3,859</b>	<b>5,372</b>	<b>1,513</b>	<b>39.2%</b>

<b>Caseload Breakdowns - Fiscal Year 2022- Civil Case Filings</b>						
	Complaints		Civil Judgments, Name Changes & Appeals		Total	
New Castle County	2,881	57.7%	2,109	42.3%	4,990	100%
Kent County	952	58.4%	677	41.6%	1,629	100%
Sussex County	1,003	57.2%	750	42.8%	1,753	100%
<b>State</b>	<b>4,836</b>	<b>57.8%</b>	<b>3,536</b>	<b>42.2%</b>	<b>8,372</b>	<b>100%</b>

Percentages may not total 100 due to rounding.

## Court of Common Pleas 10-Year Civil Caseload Trend



	2013	2014	2015	2016	2017	2018	2019	2020	2021	2022
■ Filings	9,748	8,793	10,295	9,722	10,575	13,788	12,233	9,357	8,736	8,372
■ Dispositions	4,229	4,327	4,415	5,266	5,034	6,508	6,896	4,928	3,859	5,372

**Fiscal Year**

# COURT OF COMMON PLEAS

## Caseload Summary - Fiscal Years 2021-2022 - Criminal Misdemeanor Case Filings

	2021	2022	Change	% Change
New Castle County	29,434	34,152	4,718	16.0%
Kent County	16,665	20,913	4,248	25.5%
Sussex County	20,638	26,741	6,103	29.6%
<b>State</b>	<b>66,737</b>	<b>81,806</b>	<b>15,069</b>	<b>22.6%</b>

## Caseload Summary - Fiscal Years 2021-2022 - Criminal Misdemeanor Case Dispositions

	2021	2022	Change	% Change
New Castle County	21,400	19,180	-2,220	-10.4%
Kent County	9,999	14,405	4,406	44.1%
Sussex County	14,897	20,141	5,244	35.2%
<b>State</b>	<b>46,296</b>	<b>53,726</b>	<b>7,430</b>	<b>16.0%</b>

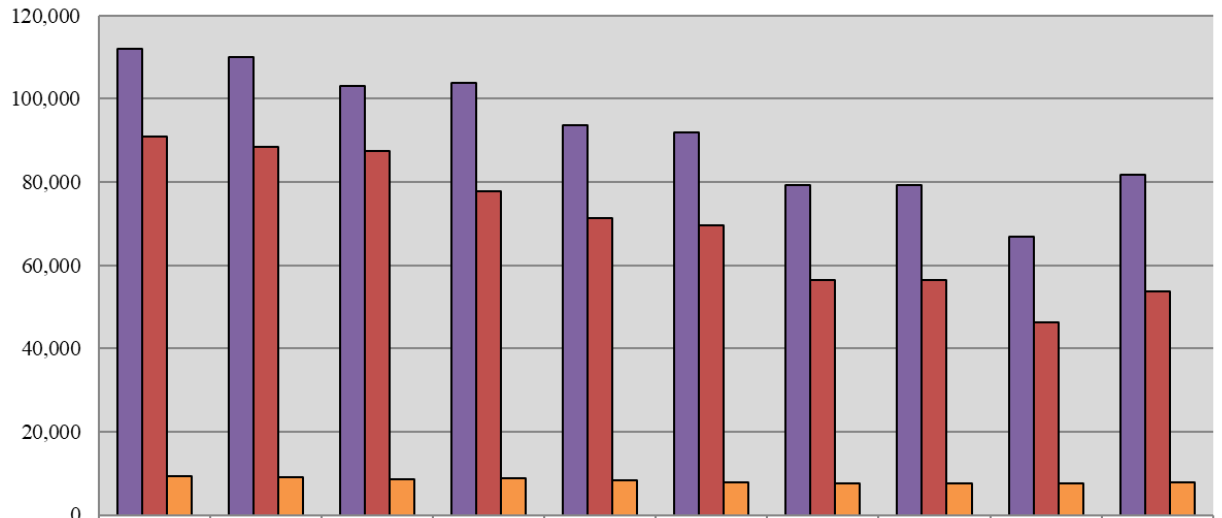
## Caseload Summary - Fiscal Years 2021-2022 - Criminal Preliminary Hearing Case Filings

	2021	2022	Change	% Change
New Castle County	4,039	4,043	4	0.1%
Kent County	1,616	1,813	197	12.2%
Sussex County	1,866	1,889	23	1.2%
<b>State</b>	<b>7,521</b>	<b>7,745</b>	<b>224</b>	<b>3.0%</b>

\*Includes Contempt of Court Cases.

Source: Court Administrator, Court of Common Pleas; Administrative Office of the Courts.

## Court of Common Pleas 10-Year Criminal Caseload Trend



	2013	2014	2015	2016	2017	2018	2019	2020	2021	2022
■ Misdemeanor Filings	112,004	110,071	103,176	103,825	93,630	92,008	79,162	79,162	66,737	81,806
■ Misdemeanor Dispositions	90,873	88,507	87,366	77,673	71,401	69,504	56,322	56,322	46,296	53,726
■ Preliminary Hearings	9,398	9,011	8,621	8,689	8,402	7,798	7,520	7,520	7,521	7,745

**Fiscal Year**

## COURT OF COMMON PLEAS

### Caseload Summary - Fiscal Years 2021-2022 - Total Criminal Misdemeanor and Civil Case Filings

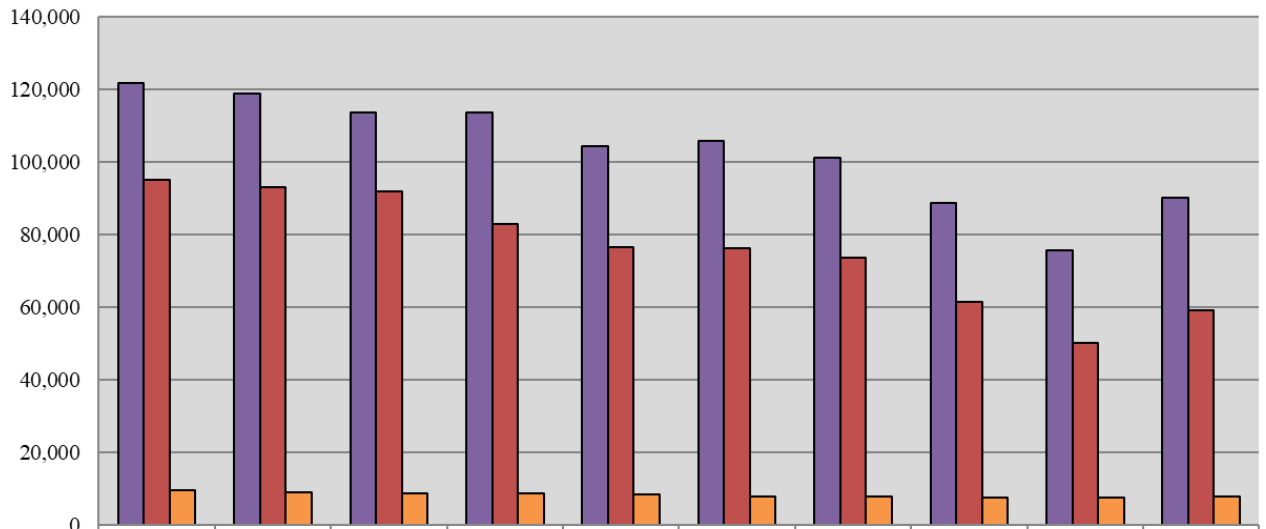
	2021	2022	Change	% Change
New Castle County	34,771	39,142	4,371	12.6%
Kent County	18,459	22,542	4,083	22.1%
Sussex County	22,243	28,494	6,251	28.1%
<b>State</b>	<b>75,473</b>	<b>90,178</b>	<b>14,705</b>	<b>19.5%</b>

### Caseload Summary - Fiscal Years 2021-2022 - Total Criminal Misdemeanor and Civil Case Dispositions

	2021	2022	Change	% Change
New Castle County	23,674	22,441	-1,233	-5.2%
Kent County	10,821	15,419	4,598	42.5%
Sussex County	15,660	21,238	5,578	35.6%
<b>State</b>	<b>50,155</b>	<b>59,098</b>	<b>8,943</b>	<b>17.8%</b>

Source: Court Administrator, Court of Common Pleas; Administrative Office of the Courts.

### Court of Common Pleas 10-Year Total Caseload Trend (Civil & Criminal)



	2013	2014	2015	2016	2017	2018	2019	2020	2021	2022
■ Filings	121,752	118,864	113,471	113,547	104,205	105,796	100,995	88,519	75,473	90,178
■ Dispositions	95,102	92,834	91,781	82,939	76,435	76,012	73,535	61,250	50,155	59,098
■ Preliminary Hearings	9,398	9,011	8,621	8,689	8,402	7,798	7,739	7,520	7,521	7,745

Fiscal Year