

SUPERIOR COURT
State of Delaware

2021 Annual Report Statistical Information

SUPERIOR COURT

Caseload Comparison - Fiscal Years 2020-2021 - Civil Case Filings				
	2020	2021	Change	% Change
New Castle County	7,586	6,563	-1,023	-13.5%
Kent County	1,372	947	-425	-31.0%
Sussex County	1,159	898	-261	-22.5%
State	10,117	8,408	-1,709	-16.9%

Caseload Comparison - Fiscal Years 2020-2021 - Civil Case Dispositions				
	2020	2021	Change	% Change
New Castle County	8,587	6,831	-1,756	-20.4%
Kent County	1,353	1,024	-329	-24.3%
Sussex County	1,083	876	-207	-19.1%
State	11,023	8,731	-2,292	-20.8%

The Percentage Change Formula has been updated from previous years.

Source: Prothonotary's Offices, Superior Court; Administrative Office of the Courts.

Caseload Breakdowns - Fiscal Year 2021 - Civil Case Filings						
	Complaints		Mechanic's Liens and Mortgages		Appeals	
New Castle County	3,098	47.2%	227	3.5%	73	1.1%
Kent County	383	40.4%	87	9.2%	27	2.9%
Sussex County	377	42.0%	121	13.5%	20	2.2%
State	3,858	45.9%	435	5.2%	120	1.4%
	Involuntary Commitments		Miscellaneous		Total	
New Castle County	555	8.5%	2,610	39.8%	6,563	100%
Kent County	120	12.7%	330	34.8%	947	100%
Sussex County	83	9.2%	297	33.1%	898	100%
State	758	9.0%	3,237	38.5%	8,408	100%

Percentages may not total 100 due to rounding.

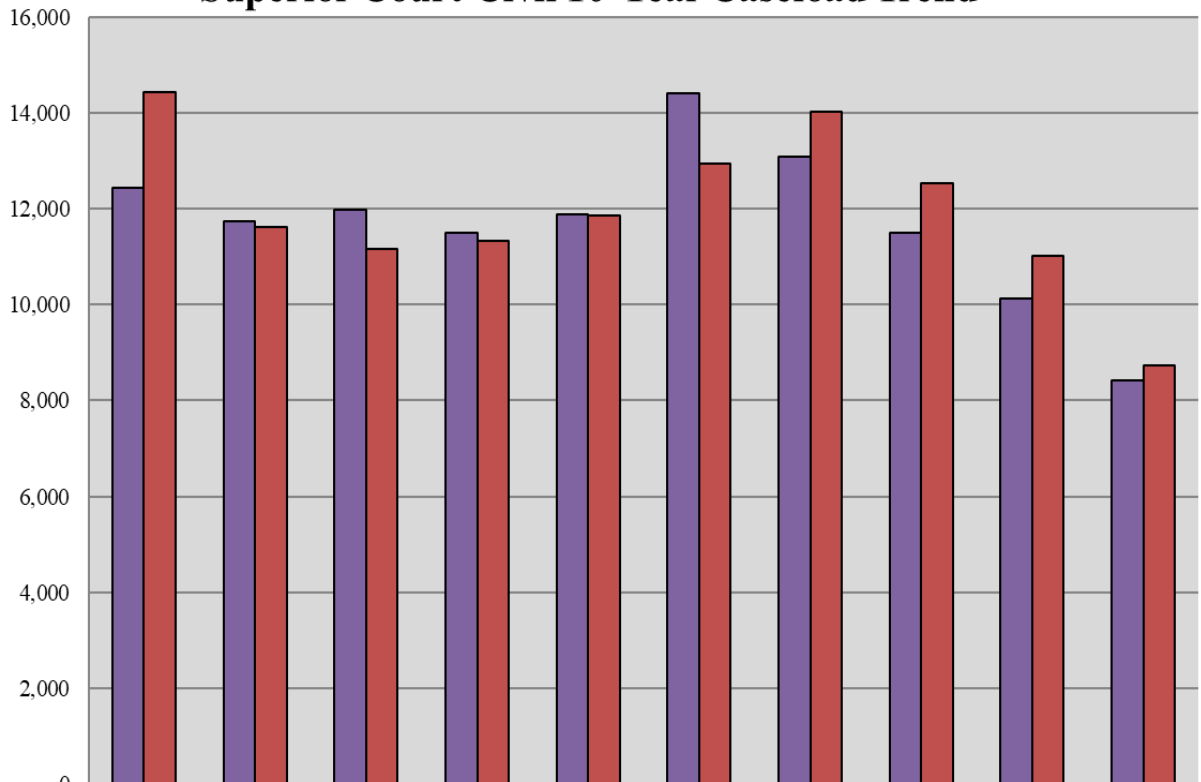
Caseload Breakdowns - Fiscal Year 2021 - Civil Case Dispositions

	Complaints		Mechanic's Liens and Mortgages		Appeals	
New Castle County	3,382	49.5%	495	7.2%	80	1.2%
Kent County	414	40.4%	175	17.1%	9	0.9%
Sussex County	337	38.5%	182	20.8%	15	1.7%
State	4,133	47.3%	852	9.8%	104	1.2%
	Involuntary Commitments		Miscellaneous		Total	
New Castle County	415	6.1%	2,459	36.0%	6,831	100%
Kent County	106	10.4%	320	31.3%	1,024	100%
Sussex County	57	6.5%	285	32.5%	876	100%
State	578	6.6%	3,064	35.1%	8,731	100%

Percentages may not total 100 due to rounding.

Source: Prothonotary's Offices, Superior Court; Administrative Office of the Courts.

Superior Court Civil 10-Year Caseload Trend



	2012	2013	2014	2015	2016	2017	2018	2019	2020	2021
■ Filings	12,430	11,726	11,972	11,498	11,890	14,394	13,076	11,492	10,117	8,408
■ Dispositions	14,422	11,619	11,166	11,338	11,857	12,934	14,026	12,522	11,023	8,731

Fiscal Year

* Report incorporates additional data made available since publication of the FY 2015 Annual Report.

Caseload Comparison - Fiscal Years 2020-2021 - Criminal Case Filings

	2020	2021	Change	% Change
New Castle County	1,678	2,242	564	33.6%
Kent County	841	780	-61	-7.3%
Sussex County	1,739	1,363	-376	-21.6%
State	4,258	4,385	127	3.0%

Caseload Comparison - Fiscal Years 2020-2021 - Criminal Case Dispositions

	2020	2021	Change	% Change
New Castle County	1,624	1,048	-576	-35.5%
Kent County	662	383	-279	-42.1%
Sussex County	1,525	1,202	-323	-21.2%
State	3,811	2,633	-1,178	-30.9%

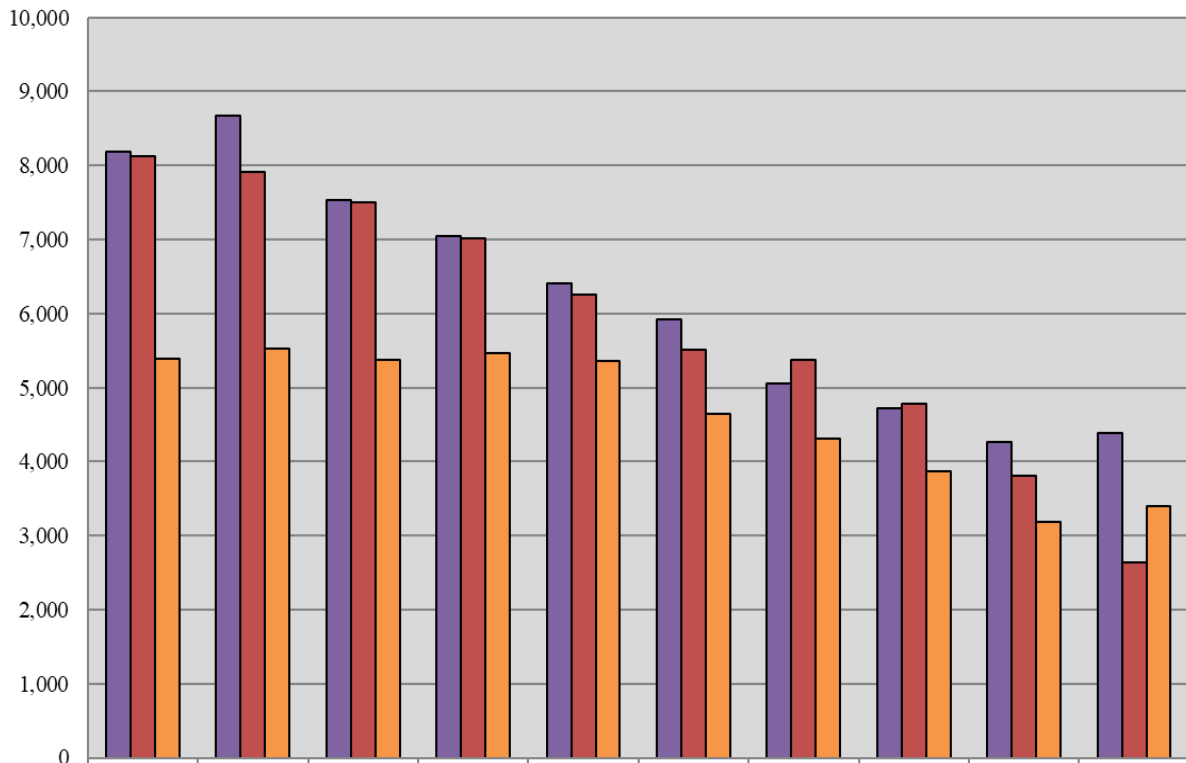
Source: Court Administrator and Case Scheduling Office, Superior Court; Administrative Office of the Courts.

Caseload Breakdowns- Fiscal Year 2021 - Criminal Filings

	Indictment		Rule 9 Warrant		Information		Other*		Total
New Castle County	1,533	68.4%	143	6.4%	546	24.4%	20	0.9%	2,242
Kent County	692	88.7%	47	6.0%	36	4.6%	5	0.6%	780
Sussex County	483	35.4%	175	12.8%	701	51.4%	4	0.3%	1,363
State	2,708	61.8%	365	8.3%	1,283	29.3%	29	0.7%	4,385

Percentages may not total 100 due to rounding.

Superior Court Criminal 10-Year Caseload Trend



	2012	2013	2014	2015	2016	2017	2018	2019	2020	2021
■ Filings	8,186	8,671	7,532	7,042	6,402	5,921	5,056	4,719	4,258	4,385
■ Dispositions	8,123	7,908	7,497	7,016	6,252	5,513	5,379	4,776	3,811	2,633
■ VOP Filings	5,384	5,520	5,378	5,465	5,358	4,639	4,307	3,865	3,179	3,402

Fiscal Year

VOP = Violation of Probation

Caseload Breakdowns- Fiscal Year 2021 - Criminal Dispositions										
	Trial		Guilty Plea**		Nolle Prosequi		Remand/Transfer		Order/Reserved Decision	
New Castle County	7	0.7%	771	73.9%	261	25.0%	5	0.5%	0	0%
Kent County	2	0.5%	253	66.2%	115	30.1%	1	0.3%	0	0%
Sussex County	1	0.1%	1,074	89.4%	99	8.2%	9	0.7%	0	N/A
State	10	0.4%	2,098	79.9%	475	18.1%	15	0.6%	-	0%
	Dismissal		Drug Court		Consolidation		Total			
New Castle County	-	0%	-	0%	-	0%	1,044	100%		
Kent County	1	0.3%	10	2.6%	-	0%	382	100%		
Sussex County	6	0.5%	12	1.0%	-	0%	1,201	100%		
State	7	0.3%	22	0.8%	-	0%	2,627	100%		

Percentages may not total 100 due to rounding.

*Includes appeals, reinstatements, guilty pleas withdrawn, granted motions for new trial and severances.

**Includes Probation Before Judgment & Guilty by Mentally Ill.

FOP = First Offender Program.

Source: Court Administrator and Case Scheduling Office, Superior Court; Administrative Office of the Courts.

Types of Dispositions - Fiscal Year 2021 - Criminal Trials - Part One							
	Jury Trial		Non-Jury Trial		Total		
New Castle County	7	100.0%	0	0%	7	100%	
Kent County	2	100.0%	0	0%	2	100%	
Sussex County	1	100.0%	0	0%	1	100%	
State	10	100.0%	0	0%	10	100%	
	Guilty		Not Guilty*		No Final Disposition**		Total
New Castle County	5	71.4%	1	14.3%	1	14.3%	7 100%
Kent County	1	50.0%	1	50.0%	0	0%	2 100%
Sussex County	1	100.0%	0	0%	0	0%	1 100%
State	7	70.0%	2	20.0%	1	10.0%	10 100%

Percentages may not total 100 due to rounding.

*Includes Acquittals, Dismissals at Trial, and Nolle Prosequis at Trial.

**Includes Hung Juries, Mistrials, and Reserved Decisions.

Source: Court Administrator and Case Scheduling Office, Superior Court; Administrative Office of the Courts.

Types of Dispositions - Fiscal Year 2021 - Criminal Trials - Part Two

Jury Trial								
	Guilty	Guilty LIO	Not Guilty	Pled Guilty at Trial	Nol Pros/Dismissed at Trial	Mistrial	Hung Jury	Total
New Castle County	5	0	1	0	0	1	0	7
Kent County	1	0	1	0	0	0	0	2
Sussex County	1	0	0	0	0	0	0	1
State	7	0	2	0	0	1	0	10

Non-Jury Trial								
	Guilty	Guilty LIO	Not Guilty	Pled Guilty at Trial	Nol Pros/Dismissed at Trial	Mistrial	Reserved Decision	Total*
New Castle County	0	0	0	0	0	0	0	0
Kent County	0	0	0	0	0	0	0	0
Sussex County	0	0	0	0	0	0	0	0
State	0	0	0	0	0	0	0	0

All Trials									
	Guilty	Guilty LIO	Not Guilty	Pled Guilty at Trial	Nol Pros/Dismissed at Trial	Mistrial	Hung Jury	Reserved Decision	Total
New Castle County	5	0	1	0	0	1	0	0	7
Kent County	1	0	1	0	0	0	0	0	2
Sussex County	1	0	0	0	0	0	0	0	1
State	7	0	2	0	0	1	0	0	10

Types of Dispositions Fiscal Year 2021 - Criminal Nolle Prosequis

	Nolle Prosequis By Special Condition		Nolle Prosequis By Merit		NPL		Total	
New Castle County	148	56.7%	106	40.6%	7	2.7%	261	100%
Kent County	72	62.6%	43	37.4%	0	0%	115	100%
Sussex County	10	10.1%	89	89.9%	0	0%	99	100%
State	230	48.4%	238	50.1%	7	1.5%	475	100%

Percentages may not total 100 due to rounding.

NPL = Nolle Prosequi entered at time of Sentencing

Source: Court Administrator and Case Scheduling Office, Superior Court; Administrative Office of the Courts.

Types of Dispositions Fiscal Year 2021 - Criminal Felony Guilty Pleas

	Pled Guilty Original		Pled Guilty Lesser		Total	
New Castle County	409	77.2%	121	22.8%	530	100%
Kent County	169	85.4%	29	14.6%	198	100%
Sussex County	436	86.2%	70	13.8%	506	100%
State	1,014	82.2%	220	17.8%	1,234	100%

Types of Dispositions Fiscal Year 2021- Criminal Misdemeanor Guilty Pleas

	Pled Guilty Original		Pled Guilty Lesser*		Total	
New Castle County	178	73.9%	63	26.1%	241	100%
Kent County	18	32.7%	37	67.3%	55	100%
Sussex County	386	68.0%	182	32.0%	568	100%
State	582	67.4%	282	32.6%	864	100%

Types of Dispositions Fiscal Year 2021 - Criminal Total Guilty Pleas

	Pled Guilty Original		Pled Guilty Lesser*		Total	
New Castle County	587	76.1%	184	23.9%	771	100%
Kent County	187	73.9%	66	26.1%	253	100%
Sussex County	822	76.5%	252	23.5%	1,074	100%
State	1,596	76.1%	502	23.9%	2,098	100%

Percentages may not total 100 due to rounding.

*Includes Probation Before Judgment.

Source: Court Administrator and Case Scheduling Office, Superior Court; Administrative Office of the Courts.

Performance Summary Fiscal Year 2021 - Criminal Cases - Elapsed Time

	Total Number of Cases Disposed	Average Time from Arrest to Disposition	Average Time from Indictment to Disposition
New Castle County	1,044	369.3 days	237.1 days
Kent County	382	303.3 days	195.9 days
Sussex County	1,201	294.3 days	221.0 days
State	2,627	325.4 days	223.7 days

Performance Summary Fiscal Year 2021 - Criminal Cases - Compliance with Speedy Trial Standards

	Total Number of Cases Disposed	Disposed of within 120 Days of Indictment (90%)		Disposed of within 180 Days of Indictment (98%)		Disposed of within 365 Days of Indictment (100%)	
New Castle County	1,044	581	55.7%	63	6.0%	206	19.7%
Kent County	382	154	40.3%	197	51.6%	347	90.8%
Sussex County	1,201	298	24.8%	409	34.1%	741	61.7%
State	2,627	1,033	39.3%	669	25.5%	1,294	49.3%

Percentages may not total 100 due to rounding.

Criminal Cases Performance Explanatory Notes - Fiscal Year 2021

1. The performance summary charts measure the average time from the date of arrest to the date of disposition as well as the average time from the date of indictment/information to the date of disposition.
2. In measuring the elapsed time for defendants for the purpose of determining the rate of compliance with the speedy trial standards, the following are excluded by the Court:
 - a) For all capiases, the time between the date that the capias is issued and the date that it is executed.
 - b) For all Rule 9 summonses and Rule 9 warrants, the time between the arrest and the indictment/information, if any.
 - c) For all mental examinations, the time between the date that the examination is ordered and the date of the receipt of the results.
 - d) For all defendants deemed to be incompetent, the period in which the defendant is considered incompetent.

Source: Court Administrator and Case Scheduling Office, Superior Court; Administrative Office of the Courts.

**Performance Comparison - Fiscal Years 2020-2021 - Criminal Cases -
Average Time from Arrest to Disposition**

	2020 (in days)	2021 (in days)	Change (in days)	% Change
New Castle County	352.1	369.3	17.2	4.9%
Kent County	203.4	303.3	99.9	49.1%
Sussex County	145.1	294.3	149.2	102.8%
State	243.4	325.4	82.0	33.7%

**Performance Comparison - Fiscal Years 2020-2021 - Criminal Cases -
Average Time from Indictment to Disposition**

	2020 (in days)	2021 (in days)	Change (in days)	% Change
New Castle County	279.0	237.1	-41.9	-15.0%
Kent County	129.5	195.9	66.4	51.3%
Sussex County	106.0	221.0	115.0	108.5%
State	183.8	223.7	39.9	21.7%

Source: Court Administrator and Case Scheduling Office, Superior Court; Administrative Office of the Courts.

Caseload Comparison - Fiscal Years 2020-2021 - Total Case Filings

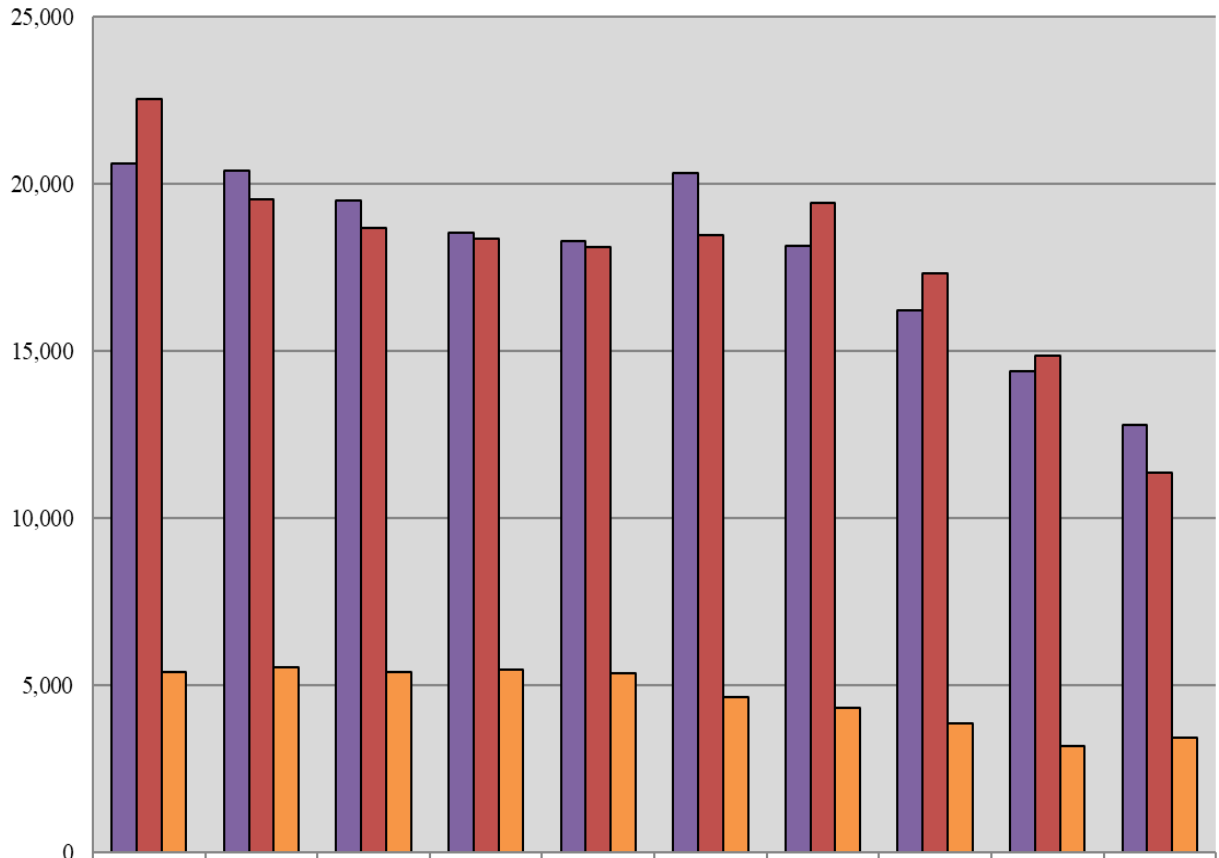
	2020	2021	Change	% Change
New Castle County	9,264	8,805	-459	-5.0%
Kent County	2,213	1,727	-486	-22.0%
Sussex County	2,898	2,261	-637	-22.0%
State	14,375	12,793	-1582	-11.0%

Caseload Comparison - Fiscal Years 2020-2021 - Total Case Dispositions

	2020	2021	Change	% Change
New Castle County	10,211	7,879	-2,332	-22.8%
Kent County	2,015	1,407	-608	-30.2%
Sussex County	2,608	2,078	-530	-20.3%
State	14,834	11,364	-3,470	-23.4%

Source: Court Administrator, Prothonotary's Offices, and Case Scheduling Office, Superior Court; Administrative Office of the Courts.

Superior Court Total 10-Year Caseload Trend



	2012	2013	2014	2015	2016	2017	2018	2019	2020	2021
■ Filings	20,616	20,397	19,504	18,540	18,292	20,315	18,132	16,211	14,375	12,793
■ Dispositions	22,544	19,527	18,663	18,354	18,109	18,447	19,405	17,298	14,834	11,364
■ VOP Filings	5,384	5,520	5,378	5,465	5,358	4,639	4,307	3,865	3,179	3,402

Fiscal Year