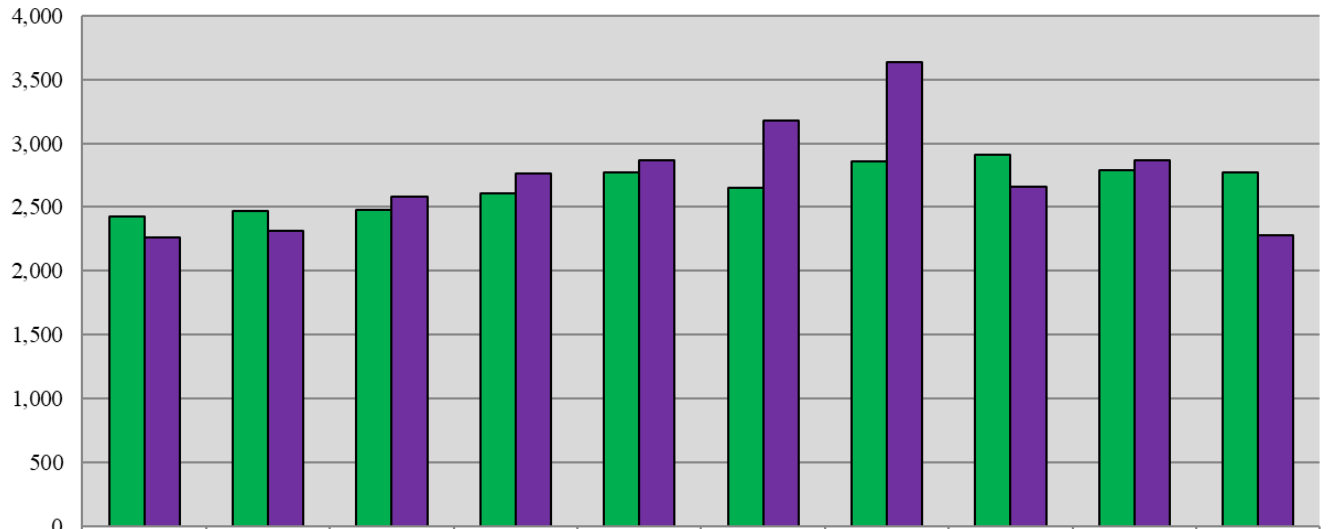


Court of Chancery 10-Year Estates Caseload Trend



	2011	2012	2013	2014	2015	2016	2017	2018	2019	2020
Filings	2,424	2,469	2,476	2,605	2,769	2,649	2,859	2,913	2,792	2,774
Dispositions	2,258	2,312	2,582	2,765	2,870	3,180	3,633	2,663	2,868	2,275

Fiscal Year