

SUPERIOR COURT
State of Delaware

2018 Annual Report Statistical Information

SUPERIOR COURT

Caseload Comparison - Fiscal Years 2017-2018 - Civil Case Filings				
	2017	2018	Change	% Change
New Castle County	11,555	9,964	-1,591	-16.0%
Kent County	1,338	1,635	297	18.2%
Sussex County	1,501	1,477	-24	-1.6%
State	14,394	13,076	-1318	-10.1%

Caseload Comparison - Fiscal Years 2017-2018 - Civil Case Dispositions				
	2017	2018	Change	% Change
New Castle County	9,905	11,150	1,245	11.2%
Kent County	1,488	1,395	-93	-6.7%
Sussex County	1,541	1,481	-60	-4.1%
State	12,934	14,026	1,092	7.8%

Source: Prothonotary's Offices, Superior Court; Administrative Office of the Courts.

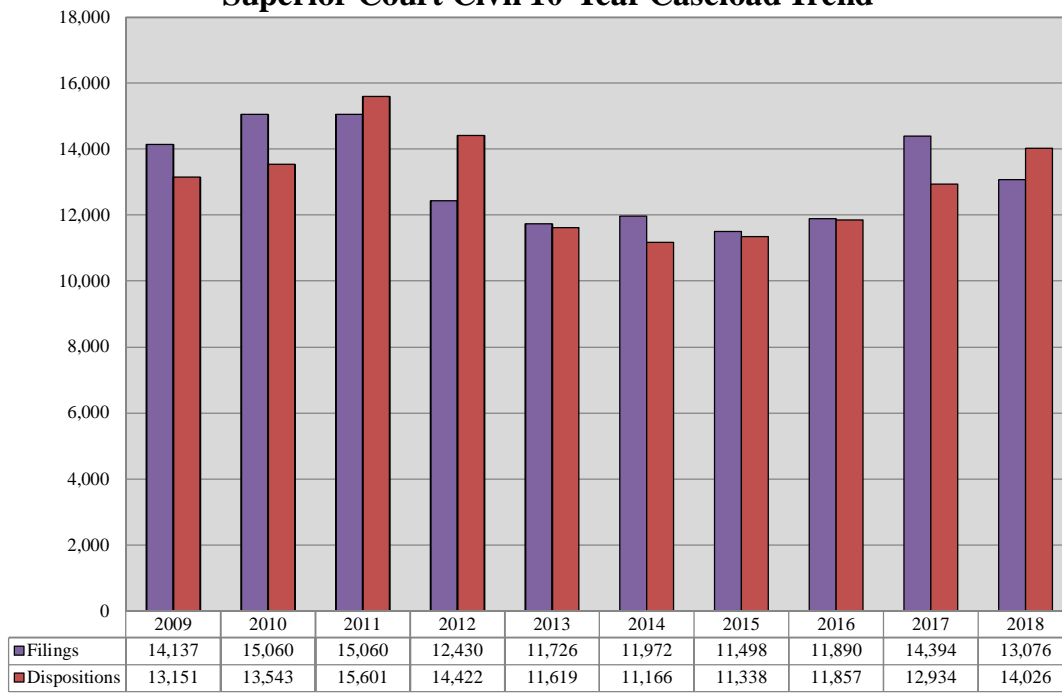
SUPERIOR COURT

Caseload Breakdowns - Fiscal Year 2018 - Civil Case Filings						
	Complaints		Mechanic's Liens and Mortgages		Appeals	
New Castle County	3,807	38.2%	1,669	16.8%	75	0.8%
Kent County	542	33.1%	591	36.1%	35	2.1%
Sussex County	341	23.1%	606	41.0%	28	1.9%
State	4,690	35.9%	2,866	21.9%	138	1.1%
	Involuntary Commitments		Miscellaneous		Total	
New Castle County	352	3.5%	4,061	40.8%	9,964	100%
Kent County	82	5.0%	385	23.5%	1,635	100%
Sussex County	4	0.3%	498	33.7%	1,477	100%
State	438	3.3%	4,944	37.8%	13,076	100%

Caseload Breakdowns - Fiscal Year 2018- Civil Case Dispositions						
	Complaints		Mechanic's Liens and Mortgages		Appeals	
New Castle County	4,218	100.0%	-	0%	-	0%
Kent County	387	100.0%	-	0%	-	0%
Sussex County	344	99.4%	-	0%	-	0%
State	4,949	100.0%	-	0%	-	0%
	Involuntary Commitments		Miscellaneous		Total	
New Castle County	-	0%	-	0%	4,218	100%
Kent County	-	0%	-	0%	387	100%
Sussex County	2	0.6%	-	0%	346	100%
State	2	0.0%	-	0%	4,951	100%

Source: Prothonotary's Offices, Superior Court; Administrative Office of the Courts.

Superior Court Civil 10-Year Caseload Trend



Fiscal Year

* Report incorporates additional data made available since publication of the FY 2015 Annual Report.

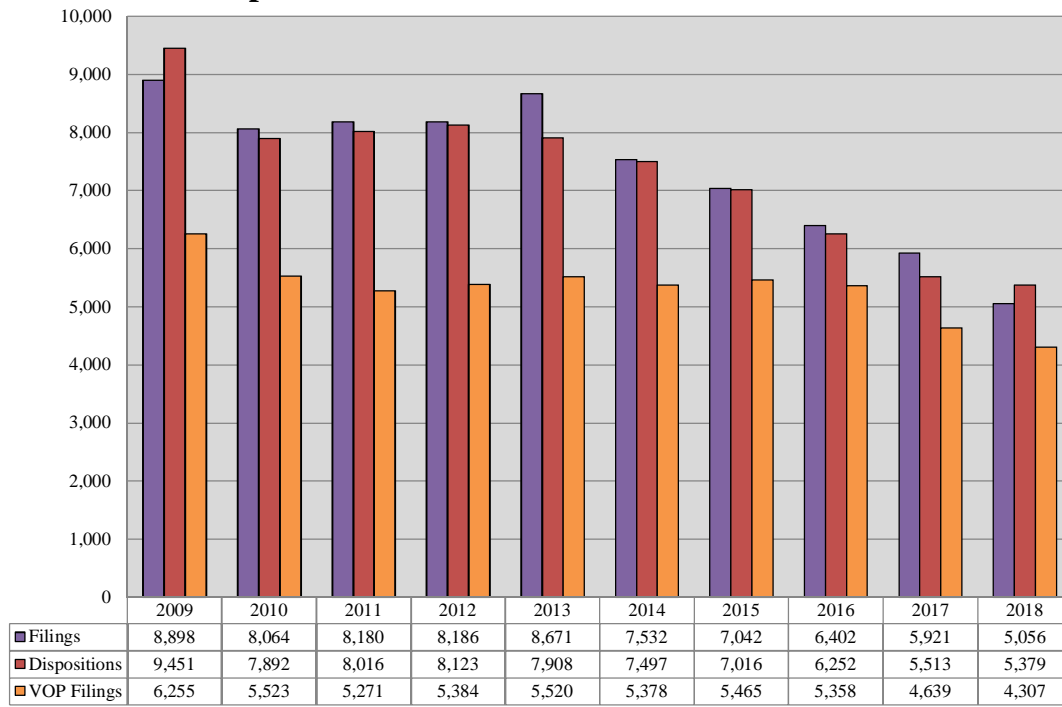
SUPERIOR COURT

Caseload Comparison - Fiscal Years 2017-2018 - Criminal Case Filings				
	2017	2018	Change	% Change
New Castle County	2,851	2,658	-193	-7.3%
Kent County	1,201	1,023	-178	-17.4%
Sussex County	1,869	1,375	-494	-35.9%
State	5,921	5,056	-865	-17.1%

Caseload Comparison - Fiscal Years 2017-2018 - Criminal Case Dispositions				
	2017	2018	Change	% Change
New Castle County	2,566	2,665	99	3.7%
Kent County	1,126	1,095	-31	-2.8%
Sussex County	1,821	1,619	-202	-12.5%
State	5,513	5,379	-134	-2.5%

Source: Court Administrator and Case Scheduling Office, Superior Court;
Administrative Office of the Courts.

Superior Court Criminal 10-Year Caseload Trend



Fiscal Year

VOP = Violation of Probation.

SUPERIOR COURT

Caseload Breakdowns- Fiscal Year 2018 - Criminal Filings									
	Indictment		Rule 9 Warrant		Information		Other*		Total
New Castle County	1,734	65.2%	282	10.6%	583	21.9%	59	2.2%	2,658
Kent County	764	74.7%	16	1.6%	240	23.5%	3	0.3%	1,023
Sussex County	384	27.9%	176	12.8%	803	58.4%	12	0.9%	1,375
State	2,882	57.0%	474	9.4%	1,626	32.2%	74	1.5%	5,056

Caseload Breakdowns- Fiscal Year 2018 - Criminal Dispositions											
	Trial		Guilty Plea**		Nolle Prosequi		Remand/Transfer		Order/Reserved Decision		
New Castle County	157	5.9%	2,015	76.1%	449	16.9%	20	0.8%	0	0%	
Kent County	32	13.1%	17	7.0%	152	62.3%	4	1.6%	0	0%	
Sussex County	17	1.1%	1,411	87.2%	159	9.8%	1	0.1%	0	N/A	
State	206	4.6%	3,443	76.3%	760	16.8%	25	0.6%	-	0%	
	Dismissal		FOP/Drug Court		Consolidation		Total				
New Castle County	8	0.3%	-	0%	-	0%	2,649	100%			
Kent County	23	9.4%	15	6.1%	1	0.4%	244	100%			
Sussex County	16	1.0%	15	0.9%	-	0%	1,619	100%			
State	47	1.0%	30	0.7%	1	0.0%	4,512	100%			

*Includes appeals, transfers, reinstatements, and severances.

**Includes Probation Before Judgment.

FOP = First Offender Program.

Source: Court Administrator and Case Scheduling Office, Superior Court;
Administrative Office of the Courts.

SUPERIOR COURT

Types of Dispositions - Fiscal Year 2018 - Criminal Trials - Part One							
	Jury Trial		Non-Jury Trial		Total		
New Castle County	143	86.7%	22	13.3%	165	100%	
Kent County	21	65.6%	11	34.4%	32	100%	
Sussex County	15	88%	2	34.4%	17	100%	
State	179	83.6%	35	16.4%	214	100%	
	Guilty		Not Guilty*		No Final Disposition**		Total
New Castle County	119	72.1%	35	21.2%	11	6.7%	165 100%
Kent County	22	68.8%	7	21.9%	3	9.4%	32 100%
Sussex County	12	70.6%	1	5.9%	4	23.5%	17 100%
State	153	71.5%	43	20.1%	18	8.4%	214 100%

*Includes Acquittals, Dismissals at Trial, and Nolle Prosequis at Trial.

**Includes Hung Juries, Mistrials, and Reserved Decisions.

Source: Court Administrator and Case Scheduling Office, Superior Court;
Administrative Office of the Courts.

SUPERIOR COURT

Types of Dispositions - Fiscal Year 2018 - Criminal Trials - Part Two

Jury Trial								
	Guilty	Guilty LIO	Not Guilty	Pled Guilty at Trial	Nol Pros/Dismissed at Trial	Mistrial	Hung Jury	Total
New Castle County	91	7	30	1	3	4	7	143
Kent County	11	3	3	1	0	1	2	21
Sussex County	10	0	0	0	1	1	3	15
State	112	10	33	2	4	6	12	179

Non-Jury Trial								
	Guilty	Guilty LIO	Not Guilty	Pled Guilty at Trial	Nol Pros/Dismissed at Trial	Mistrial	Reserved Decision	Total*
New Castle County	19	1	2	0	0	0	0	22
Kent County	6	0	4	1	0	0	0	11
Sussex County	2	0	0	0	0	0	0	2
State	27	1	6	1	0	0	0	35

All Trials									
	Guilty	Guilty LIO	Not Guilty	Pled Guilty at Trial	Nol Pros/Dismissed at Trial	Mistrial	Hung Jury	Reserved Decision	Total
New Castle County	110	8	32	1	3	4	7	0	165
Kent County	17	3	7	2	0	1	2	0	32
Sussex County	12	0	0	0	1	1	3	0	17
State	139	11	39	3	4	6	12	0	214

Types of Dispositions Fiscal Year 2018 - Criminal Nolle Prosequis									
	Nolle Prosequis By Special Condition		Nolle Prosequis By Merit		NPL		Total		
New Castle County	208	46.3%	179	39.9%	62	13.8%	449	100%	
Kent County	120	78.9%	32	21.1%	0	0%	152	100%	
Sussex County	22	13.8%	137	86.2%	0	0%	159	100%	
State	350	46.1%	348	45.8%	62	8.2%	760	100%	

LIO = Lesser Included Offense.

Nol Pros = Nolle Prosequi.

Source: Court Administrator and Case Scheduling Office, Superior Court;
Administrative Office of the Courts.

SUPERIOR COURT

Types of Dispositions Fiscal Year 2018 - Criminal Felony Guilty Pleas						
	Pled Guilty Original		Pled Guilty Lesser		Total	
New Castle County	1,272	85.9%	209	14.1%	1,481	100%
Kent County	524	85.6%	88	14.4%	612	100%
Sussex County	858	87.6%	121	12.4%	979	100%
State	2,654	86.4%	418	13.6%	3,072	100%

Types of Dispositions Fiscal Year 2018- Criminal Misdemeanor Guilty Pleas						
	Pled Guilty Original		Pled Guilty Lesser*		Total	
New Castle County	288	53.9%	246	46.1%	534	100%
Kent County	113	47.3%	126	52.7%	239	100%
Sussex County	278	64.4%	154	35.6%	432	100%
State	679	56.3%	526	43.7%	1,205	100%

Types of Dispositions Fiscal Year 2018 - Criminal Total Guilty Pleas						
	Pled Guilty Original		Pled Guilty Lesser*		Total	
New Castle County	1,560	77.4%	455	22.6%	2,015	100%
Kent County	637	74.9%	214	25.1%	851	100%
Sussex County	1,136	80.5%	275	19.5%	1,411	100%
State	3,333	77.9%	944	22.1%	4,277	100%

*Includes Probation Before Judgment.

Source: Court Administrator and Case Scheduling Office, Superior Court;
Administrative Office of the Courts.

SUPERIOR COURT

Performance Summary Fiscal Year 2018 - Criminal Cases - Elapsed Time

	Total Number of Cases Disposed	Average Time from Arrest to Disposition	Average Time from Indictment to Disposition
New Castle County	2,665	180.0 days	108.3 days
Kent County	1,095	182.8 days	113.6 days
Sussex County	1,619	135.5 days	127.8 days
State	5,379	167.2 days	115.3 days

Performance Summary Fiscal Year 2018 - Criminal Cases - Compliance with Speedy Trial Standards

	Total Number of Cases Disposed	Disposed of within 120 Days of Indictment (90%)		Disposed of within 180 Days of Indictment (98%)		Disposed of within 365 Days of Indictment (100%)	
New Castle County	2,665	1,594	59.8%	2,253	84.5%	2,602	97.6%
Kent County	1,095	600	54.8%	846	77.3%	1,055	96.3%
Sussex County	1,619	919	56.8%	1,173	72.5%	1,357	83.8%
State	5,379	3,113	57.9%	4,272	79.4%	5,014	93.2%

Criminal Cases Performance Explanatory Notes - Fiscal Year 2018

1. The performance summary charts measure the average time from the date of arrest to the date of disposition as well as the average time from the date of indictment/information to the date of disposition.
2. In measuring the elapsed time for defendants for the purpose of determining the rate of compliance with the speedy trial standards, the following are excluded by the Court:
 - a) For all capiases, the time between the date that the capias is issued and the date that it is executed.
 - b) For all Rule 9 summonses and Rule 9 warrants, the time between the arrest and the indictment/information, if any.
 - c) For all mental examinations, the time between the date that the examination is ordered and the date of the receipt of the results.
 - d) For all defendants deemed to be incompetent, the period in which the defendant is considered incompetent.

Source: Court Administrator and Case Scheduling Office, Superior Court; Administrative Office of the Courts.

SUPERIOR COURT

Performance Comparison - Fiscal Years 2017-2018 - Criminal Cases - Average Time from Arrest to Disposition

	2017 (in days)	2018 (in days)	Change (in days)	% Change
New Castle County	182.4	180.0	-2.4	-1.3%
Kent County	201.8	182.8	-19.1	-10.4%
Sussex County	168.4	135.5	-32.9	-24.3%
State	181.7	167.2	-14.6	-8.7%

Performance Comparison - Fiscal Years 2017-2018 - Criminal Cases - Average Time from Indictment to Disposition

	2017 (in days)	2018 (in days)	Change (in days)	% Change
New Castle County	110.7	108.3	-2.4	-2.2%
Kent County	130.3	113.6	-16.7	-14.7%
Sussex County	121.6	127.8	6.2	4.9%
State	118.31	115.3	-3.1	-2.6%

Source: Court Administrator and Case Scheduling Office, Superior Court;
Administrative Office of the Courts.

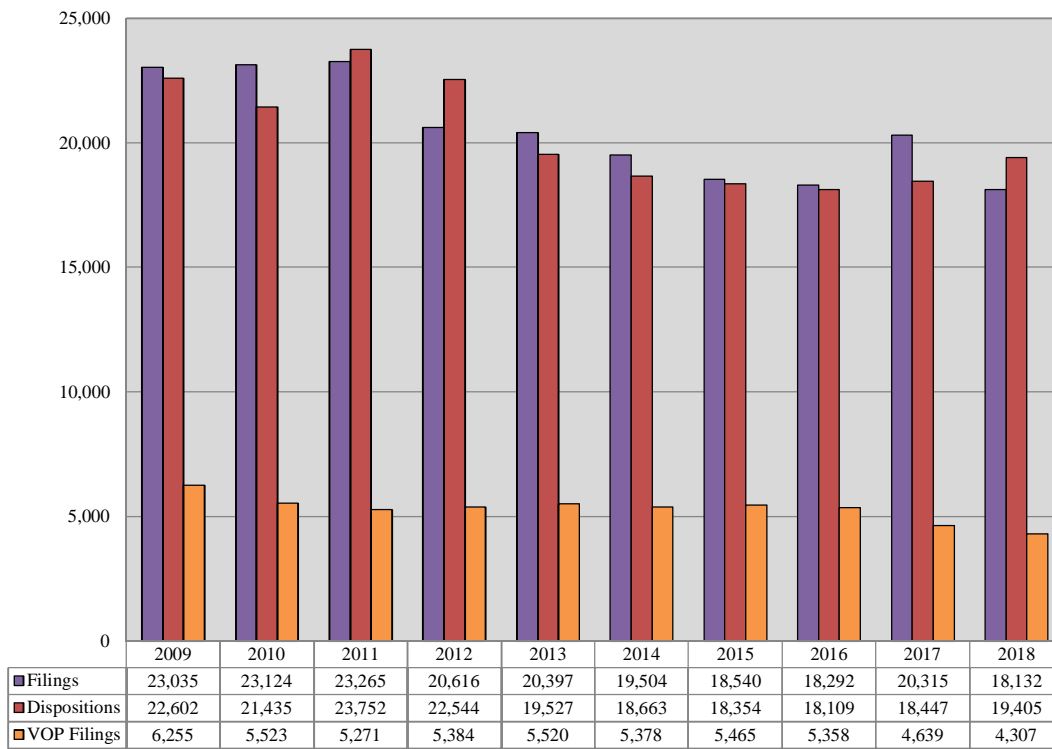
SUPERIOR COURT

Caseload Comparison - Fiscal Years 2017-2018 - Total Case Filings				
	2017	2018	Change	% Change
New Castle County	14,406	12,622	-1,784	-14.1%
Kent County	2,539	2,658	119	4.5%
Sussex County	3,370	2,852	-518	-18.2%
State	20,315	18,132	-2183	-12.0%

Caseload Comparison - Fiscal Years 2017-2018 - Total Case Dispositions				
	2017	2018	Change	% Change
New Castle County	12,471	13,815	1,344	9.7%
Kent County	2,614	2,490	-124	-5.0%
Sussex County	3,362	3,100	-262	-8.5%
State	18,447	19,405	958	4.9%

Source: Court Administrator, Prothonotary's Offices, and Case Scheduling Office, Superior Court; Administrative Office of the Courts.

Superior Court Total 10-Year Caseload Trend



Fiscal Year