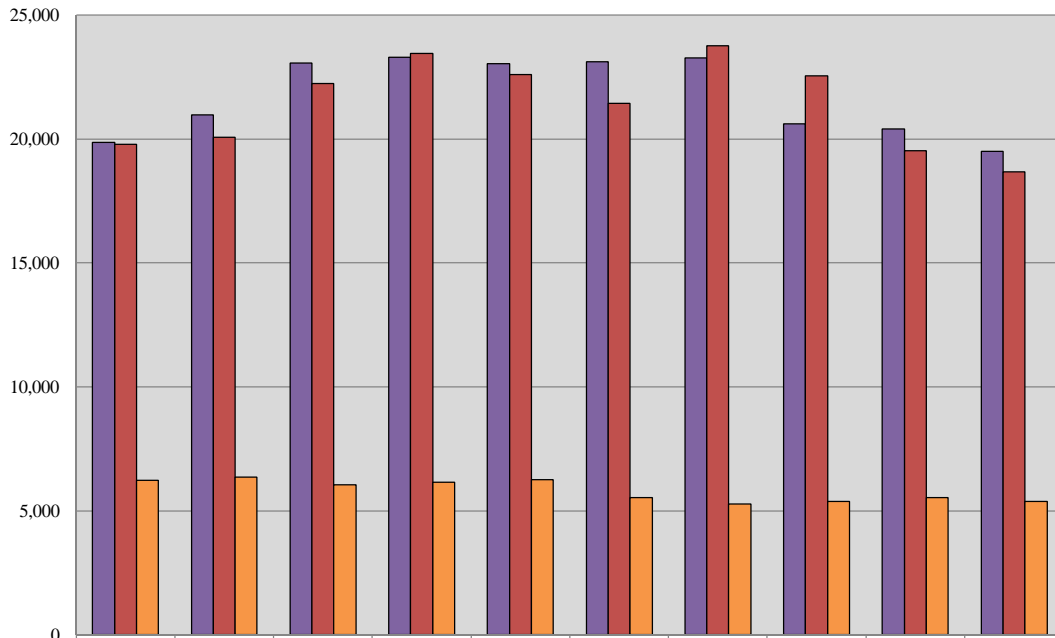


Superior Court Total 10-Year Caseload Trend



	2005	2006	2007	2008	2009	2010	2011	2012	2013	2014
■ Filings	19,851	20,977	23,075	23,292	23,035	23,124	23,265	20,616	20,397	19,504
■ Dispositions	19,781	20,077	22,231	23,450	22,602	21,435	23,752	22,544	19,527	18,663
■ VOP Filings	6,232	6,349	6,055	6,151	6,255	5,523	5,271	5,384	5,520	5,378

Fiscal Year