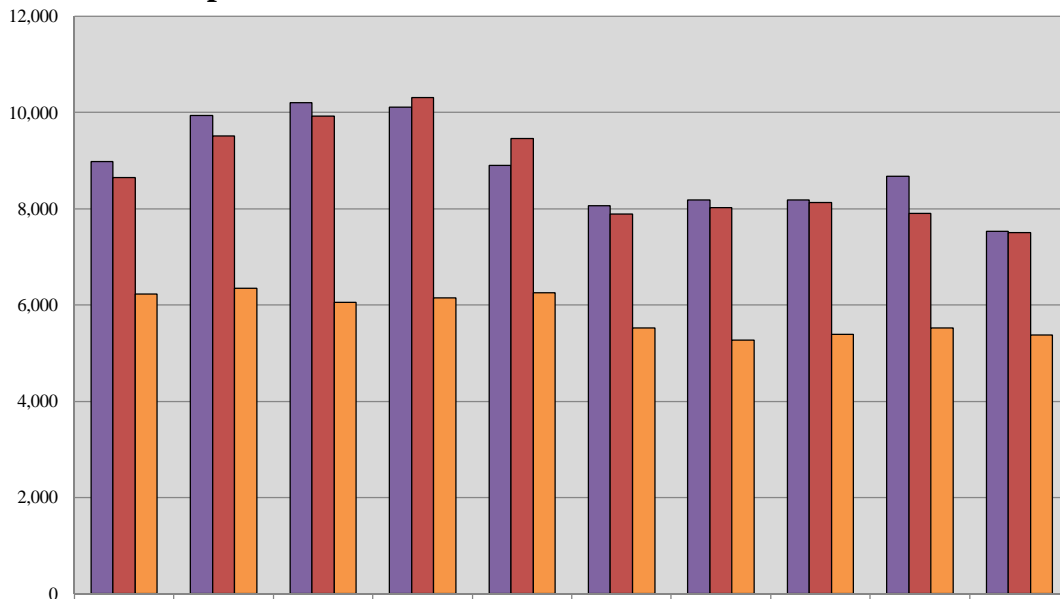


Superior Court Criminal 10-Year Caseload Trend



	2005	2006	2007	2008	2009	2010	2011	2012	2013	2014
■ Filings	8,973	9,936	10,206	10,115	8,898	8,064	8,180	8,186	8,671	7,532
■ Dispositions	8,651	9,512	9,923	10,306	9,451	7,892	8,016	8,123	7,908	7,497
■ VOP Filings	6,232	6,349	6,055	6,151	6,255	5,523	5,271	5,384	5,520	5,378

Fiscal Year

VOP = Violation of Probation.