



**COURT OF CHANCERY**  
**State of Delaware**

**2014 Annual Report Statistical Information**

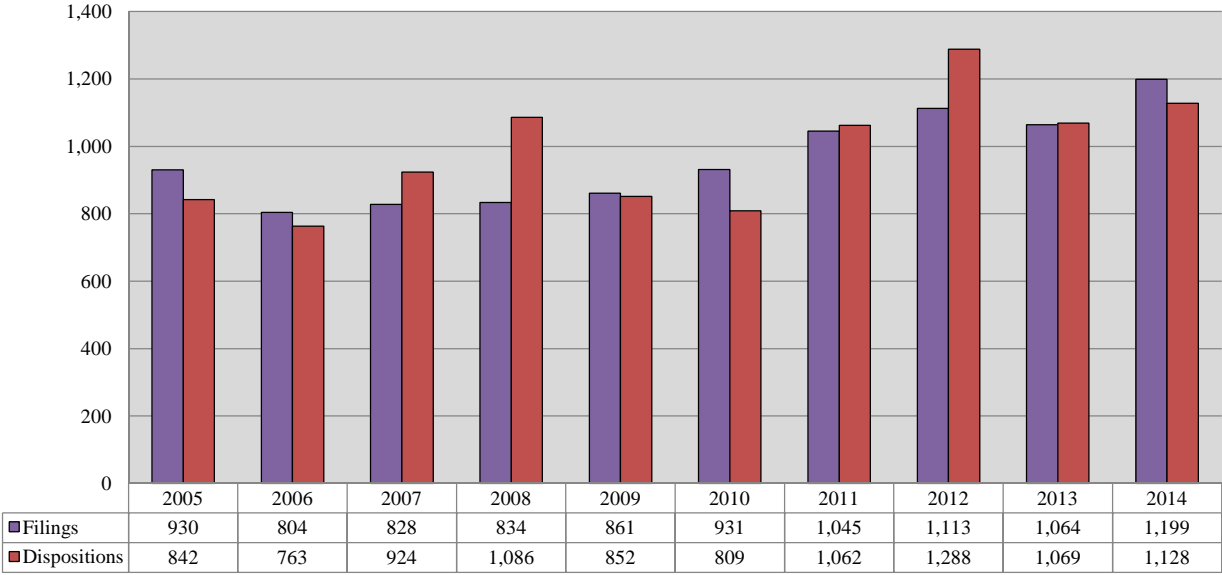
## **COURT OF CHANCERY**

<b>Caseload Comparison - Fiscal Years 2013-2014 - Civil Filings</b>				
	2013	2014	Change	% Change
<b>State</b>	<b>1,064</b>	<b>1,199</b>	<b>135</b>	<b>12.7%</b>

<b>Caseload Comparison - Fiscal Years 2013-2014 - Civil Dispositions</b>				
	2013	2014	Change	% Change
<b>State</b>	<b>1,069</b>	<b>1,128</b>	<b>59</b>	<b>5.5%</b>

Source: Registers in Chancery; Administrative Office of the Courts.

**Court of Chancery 10-Year Civil Caseload Trend**



**Fiscal Year**

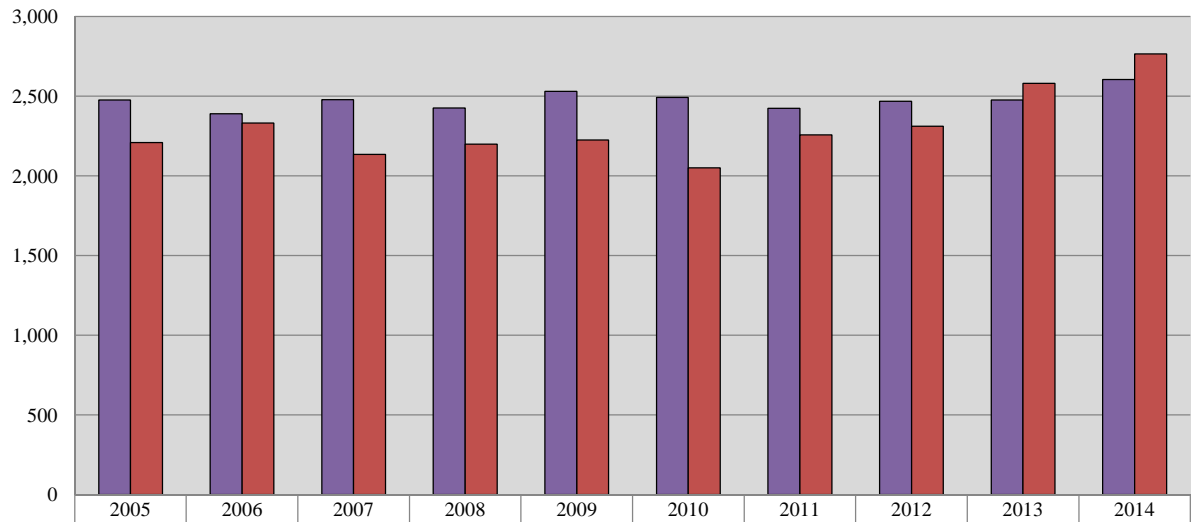
## **COURT OF CHANCERY**

<b>Caseload Comparison - Fiscal Years 2013-2014 - Estates Filings</b>				
	2013	2014	Change	% Change
<b>State</b>	<b>2,476</b>	<b>2,605</b>	<b>129</b>	<b>5.2%</b>

<b>Caseload Comparison - Fiscal Years 2013-2014 - Estates Dispositions</b>				
	2013	2014	Change	% Change
<b>State</b>	<b>2,582</b>	<b>2,765</b>	<b>183</b>	<b>7.1%</b>

Source: Register of Wills; Administrative Office of the Courts.

## Court of Chancery 10-Year Estates Caseload Trend



	2005	2006	2007	2008	2009	2010	2011	2012	2013	2014
Filings	2,476	2,390	2,479	2,427	2,531	2,492	2,424	2,469	2,476	2,605
Dispositions	2,210	2,333	2,135	2,199	2,225	2,051	2,258	2,312	2,582	2,765

**Fiscal Year**

**COURT OF CHANCERY**

<b>Caseload Comparison - Fiscal Years 2013-2014 - Miscellaneous Matters Filings</b>				
	2013	2014	Change	% Change
<b>State</b>	<b>615</b>	<b>733</b>	<b>118</b>	<b>19.2%</b>

<b>Caseload Comparison - Fiscal Years 2013-2014 - Miscellaneous Matters Dispositions</b>				
	2013	2014	Change	% Change
<b>State</b>	<b>1,328</b>	<b>1,290</b>	<b>-38</b>	<b>-2.9%</b>

Source: Registers of Wills; Administrative Office of the Courts.

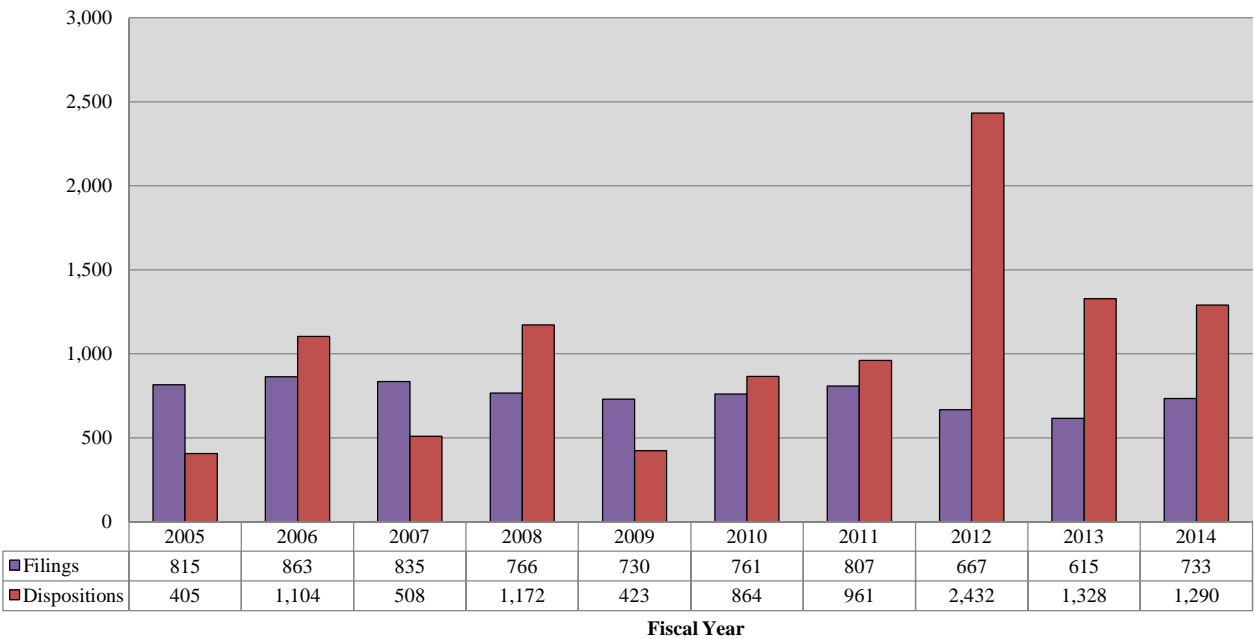
## COURT OF CHANCERY

Caseload Breakdown - Fiscal Year 2014 - Miscellaneous Matters Filings									
	Guardians for Minors		Guardians for Infirm		Trusts		Other Matters		Total
State	438	59.8%	234	31.9%	5	0.7%	56	7.6%	733 100%

Caseload Breakdown - Fiscal Year 2014 - Miscellaneous Matters Dispositions									
	Guardians for Minors		Guardians for Infirm		Trusts		Other Matters		Total
State	713	55.3%	444	34.4%	72	5.6%	61	4.7%	1,290 100%

Source: Registers in Chancery; Administrative Office of the Courts.

**Court of Chancery 10-Year Miscellaneous Caseload Trend**





## **COURT OF CHANCERY**

<b>Caseload Comparison - Fiscal Years 2013-2014 - Total Case Filings*</b>				
	2013	2014	Change	% Change
<b>State</b>	<b>4,155</b>	<b>4,537</b>	<b>382</b>	<b>9.2%</b>

<b>Caseload Comparison - Fiscal Years 2013-2014 - Total Case Dispositions*</b>				
	2013	2014	Change	% Change
<b>State</b>	<b>4,979</b>	<b>5,183</b>	<b>204</b>	<b>4.1%</b>

\*Total includes Civil, Miscellaneous, and Estates.

Source: Registers in Chancery; Registers of Wills; Administrative Office of the Courts.

### Court of Chancery 10-Year Total Caseload Trend (Civil, Miscellaneous & Estates)

