



COURT OF CHANCERY
State of Delaware

2012 Annual Report Statistical Information

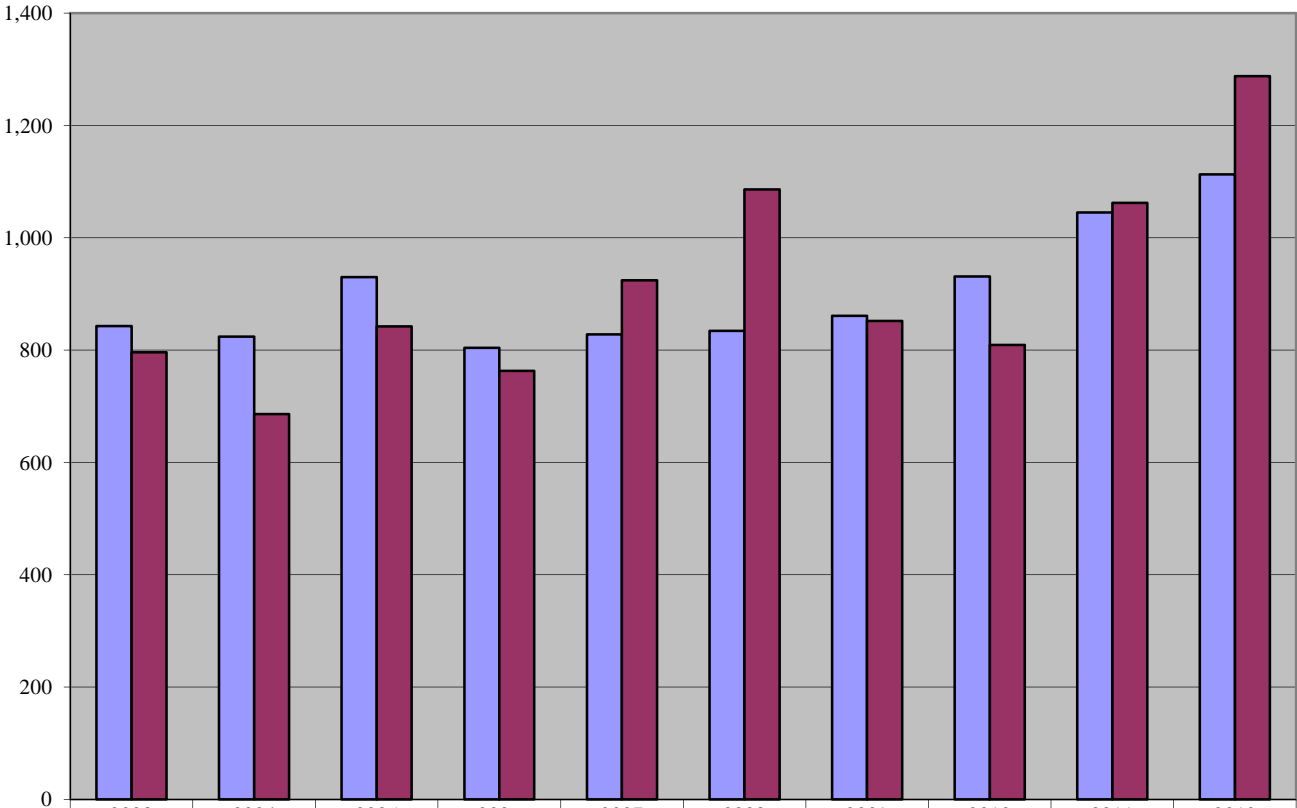
COURT OF CHANCERY

Caseload Comparison - Fiscal Years 2011-2012 - Civil Filings				
	2011	2012	Change	% Change
Statewide	1,045	1,113	68	6.5%

Caseload Comparison - Fiscal Years 2011-2012 - Civil Dispositions				
	2011	2012	Change	% Change
Statewide	1,062	1,288	226	21.3%

Source: Registers in Chancery; Administrative Office of the Courts

Court of Chancery 10-Year Civil Caseload Trend



■ Filings	843	824	930	804	828	834	861	931	1,045	1,113
■ Dispositions	796	686	842	763	924	1,086	852	809	1,062	1,288

Fiscal Year

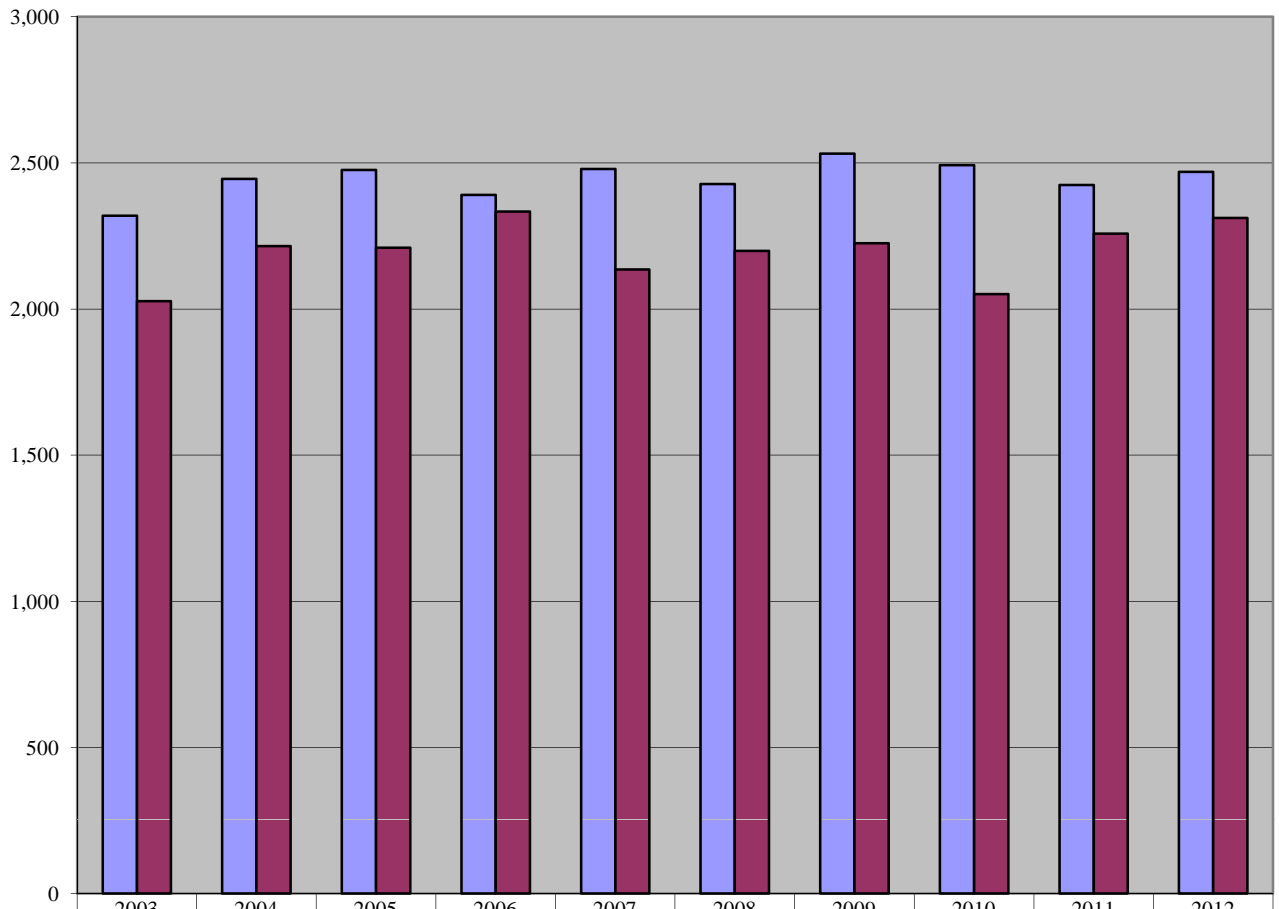
COURT OF CHANCERY

Caseload Comparison - Fiscal Years 2011-2012 - Estates Filings				
	2011	2012	Change	% Change
Statewide	2,424	2,469	45	1.9%

Caseload Comparison - Fiscal Years 2011-2012 - Estates Dispositions				
	2011	2012	Change	% Change
Statewide	2,258	2,312	54	2.4%

Source: Registers of Wills; Administrative Office of the Courts

Court of Chancery 10-Year Estates Caseload Trend



	2003	2004	2005	2006	2007	2008	2009	2010	2011	2012
■ Filings	2,319	2,445	2,476	2,390	2,479	2,427	2,531	2,492	2,424	2,469
■ Dispositions	2,027	2,215	2,210	2,333	2,135	2,199	2,225	2,051	2,258	2,312

Fiscal Year

COURT OF CHANCERY

Caseload Summary Fiscal Years 2011-2012- Miscellaneous Matters Filings				
	2011	2012	Change	% Change
Statewide	807	667	-140	-17.3%

Caseload Summary Fiscal Years 2011-2012- Miscellaneous Matters Dispositions				
	2011	2012	Change	% Change
Statewide	961	2,432	1,471	153.1%

Source: Registers in Chancery; Administrative Office of the Courts

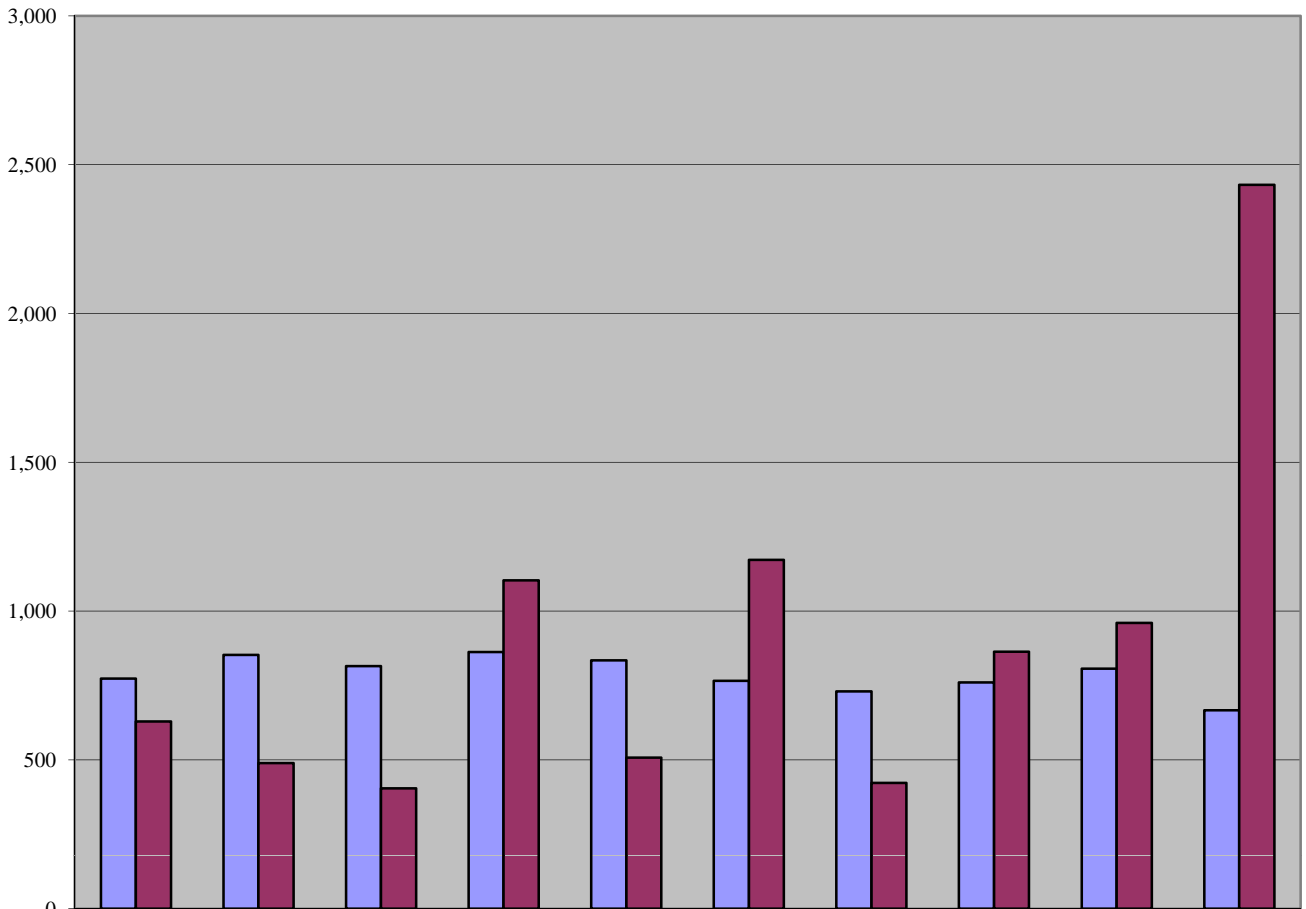
COURT OF CHANCERY

Caseload Breakdown Fiscal Year 2012 - Miscellaneous Matters Filings										
	Guardians for Minors		Guardians for Infirm		Trusts		Other Matters		Totals	
Statewide	197	29.5%	285	42.7%	8	1.2%	177	26.5%	667	100.0%

Caseload Breakdown Fiscal Year 2012 - Miscellaneous Matters Dispositions										
	Guardians for Minors		Guardians for Infirm		Trusts		Other Matters		Totals	
Statewide	274	11.3%	243	10.0%	53	2.2%	1862	76.6%	2,432	100.0%

Source: Registers in Chancery; Administrative Office of the Courts

Court of Chancery 10-Year Miscellaneous Caseload Trend



	2003	2004	2005	2006	2007	2008	2009	2010	2011	2012
■ Filings	773	853	815	863	835	766	730	761	807	667
■ Dispositions	629	490	405	1,104	508	1,172	423	864	961	2,432

Fiscal Year

COURT OF CHANCERY

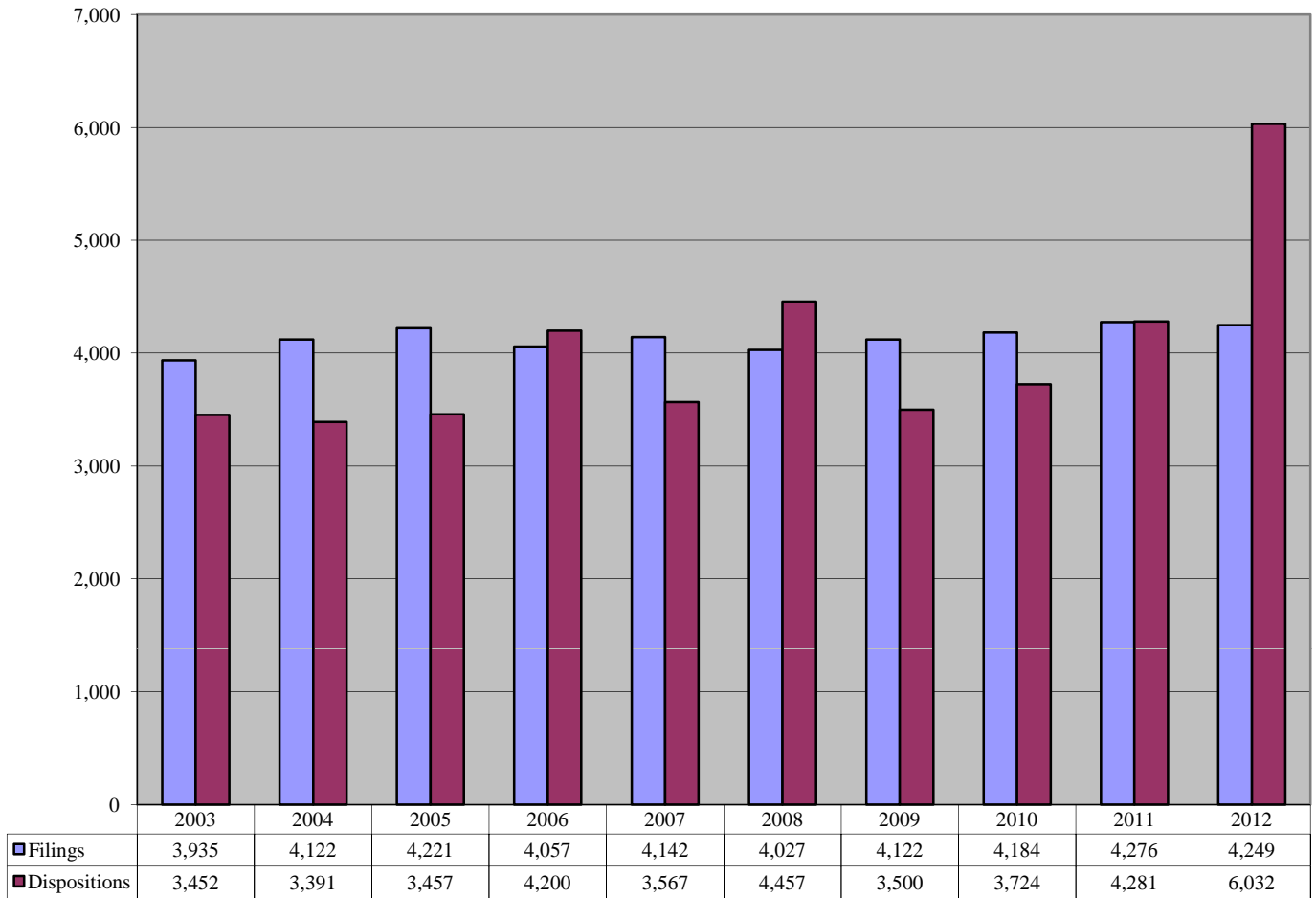
Caseload Comparison - Fiscal Years 2011-2012 - Total Case Filings*				
	2011	2012	Change	% Change
Statewide	4,276	4,249	-27	-0.6%

Caseload Comparison - Fiscal Years 2011-2012 - Total Case Dispositions*				
	2011	2012	Change	% Change
Statewide	4,281	6,032	1751	40.9%

* Total includes Civil, Miscellaneous, and Estates

Source: Registers in Chancery; Registers of Wills; Administrative Office of the Courts

Court of Chancery 10-Year Total Caseload Trend (Civil, Miscellaneous, & Estates)



Fiscal Year