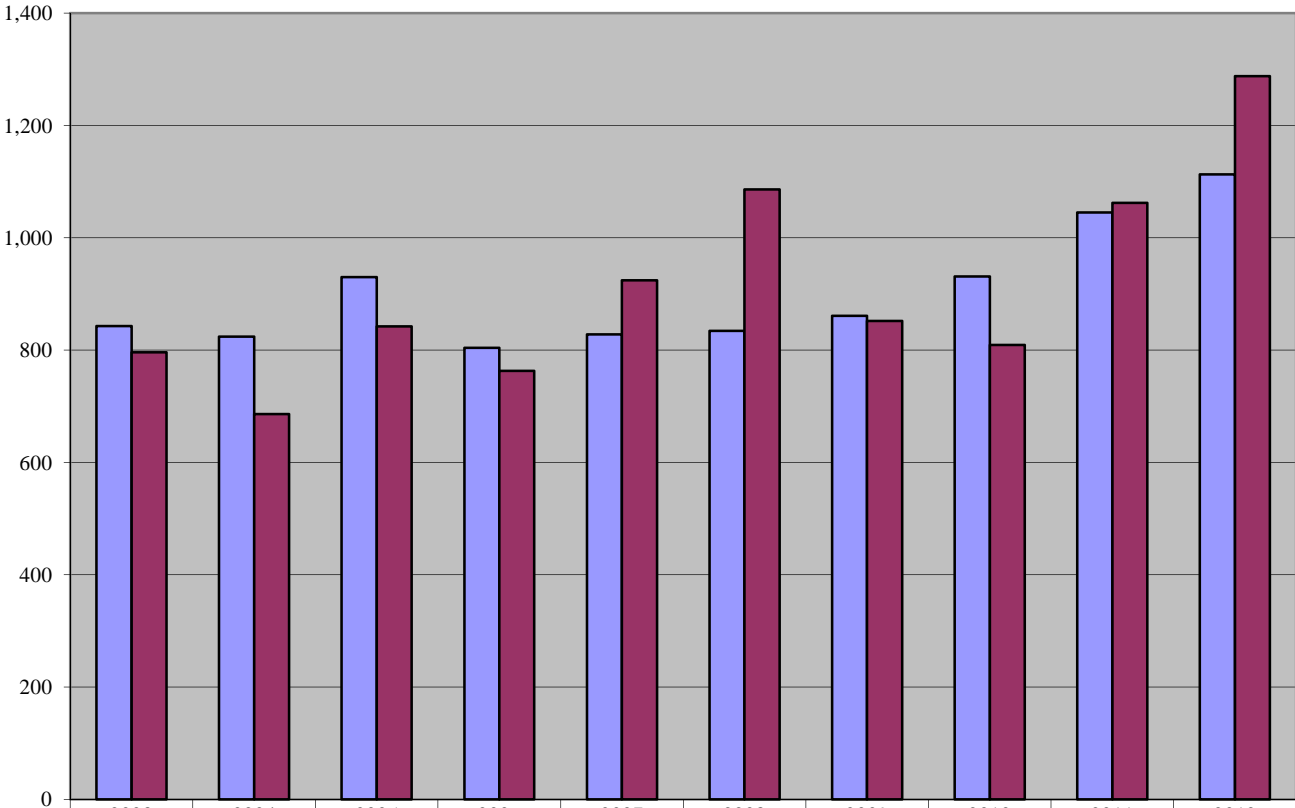


### Court of Chancery 10-Year Civil Caseload Trend



	2003	2004	2005	2006	2007	2008	2009	2010	2011	2012
<span style="color: blue;">■</span> Filings	843	824	930	804	828	834	861	931	1,045	1,113
<span style="color: maroon;">■</span> Dispositions	796	686	842	763	924	1,086	852	809	1,062	1,288

**Fiscal Year**