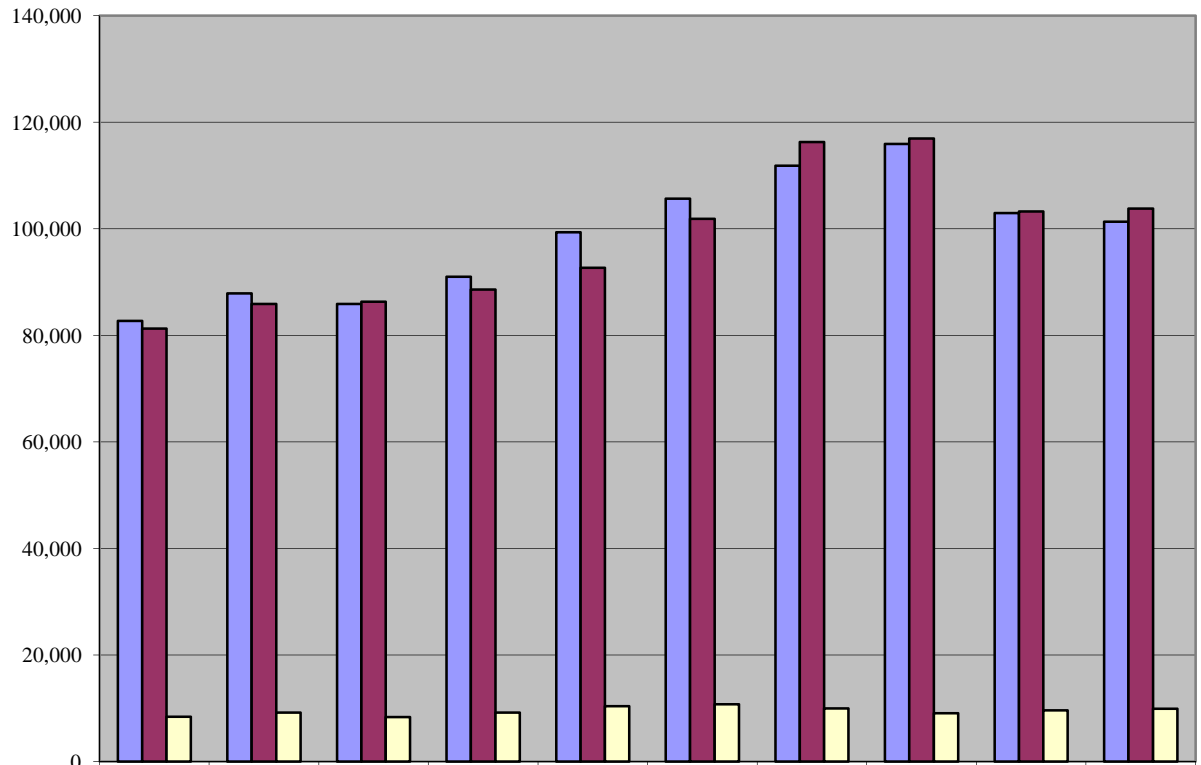


**Court of Common Pleas 10-Year Criminal Caseload Trend**



	2003	2004	2005	2006	2007	2008	2009	2010	2011	2012
Misdemeanor Filings	82,719	87,836	85,867	90,964	99,345	105,607	111,797	115,882	102,939	101,284
Misdemeanor Dispositions	81,257	85,893	86,319	88,577	92,691	101,823	116,278	116,926	103,209	103,802
Preliminary Hearings	8,386	9,189	8,329	9,165	10,413	10,720	9,940	9,066	9,590	9,917

**Fiscal Year**