



SUPERIOR COURT
State of Delaware

2011 Annual Report Statistical Information

SUPERIOR COURT

Caseload Breakdowns Fiscal Year 2011 - Civil Case Filings											
	Mechanic's Liens				Involuntary						
	Complaints		and Mortgages		Appeals		Commitments		Miscellaneous		Total
New Castle County	3,378	32.8%	3,511	34.0%	176	1.7%	1,221	11.8%	2,027	19.7%	10,313
Kent County	548	25.7%	1,061	49.8%	69	3.2%	138	6.5%	313	14.7%	2,129
Sussex County	438	16.6%	1,473	55.7%	86	3.3%	34	1.3%	612	23.2%	2,643
State	4,364	28.9%	6,045	40.1%	331	2.2%	1,393	9.2%	2,952	19.6%	15,085

Caseload Breakdowns Fiscal Year 2011 - Civil Case Dispositions											
	Mechanic's Liens				Involuntary						
	Complaints		and Mortgages		Appeals		Commitments		Miscellaneous		Total
New Castle County	3,234	30.8%	4,004	38.2%	163	1.6%	1,141	10.9%	1,946	18.6%	10,488
Kent County	611	24.6%	1,297	52.2%	68	2.7%	139	5.6%	372	15.0%	2,487
Sussex County	455	16.5%	1,584	57.4%	61	2.2%	53	1.9%	608	22.0%	2,761
State	4,300	27.3%	6,885	43.8%	292	1.9%	1,333	8.5%	2,926	18.6%	15,736

Source: Prothonotary's Offices, Superior Court; Administrative Office of the Courts

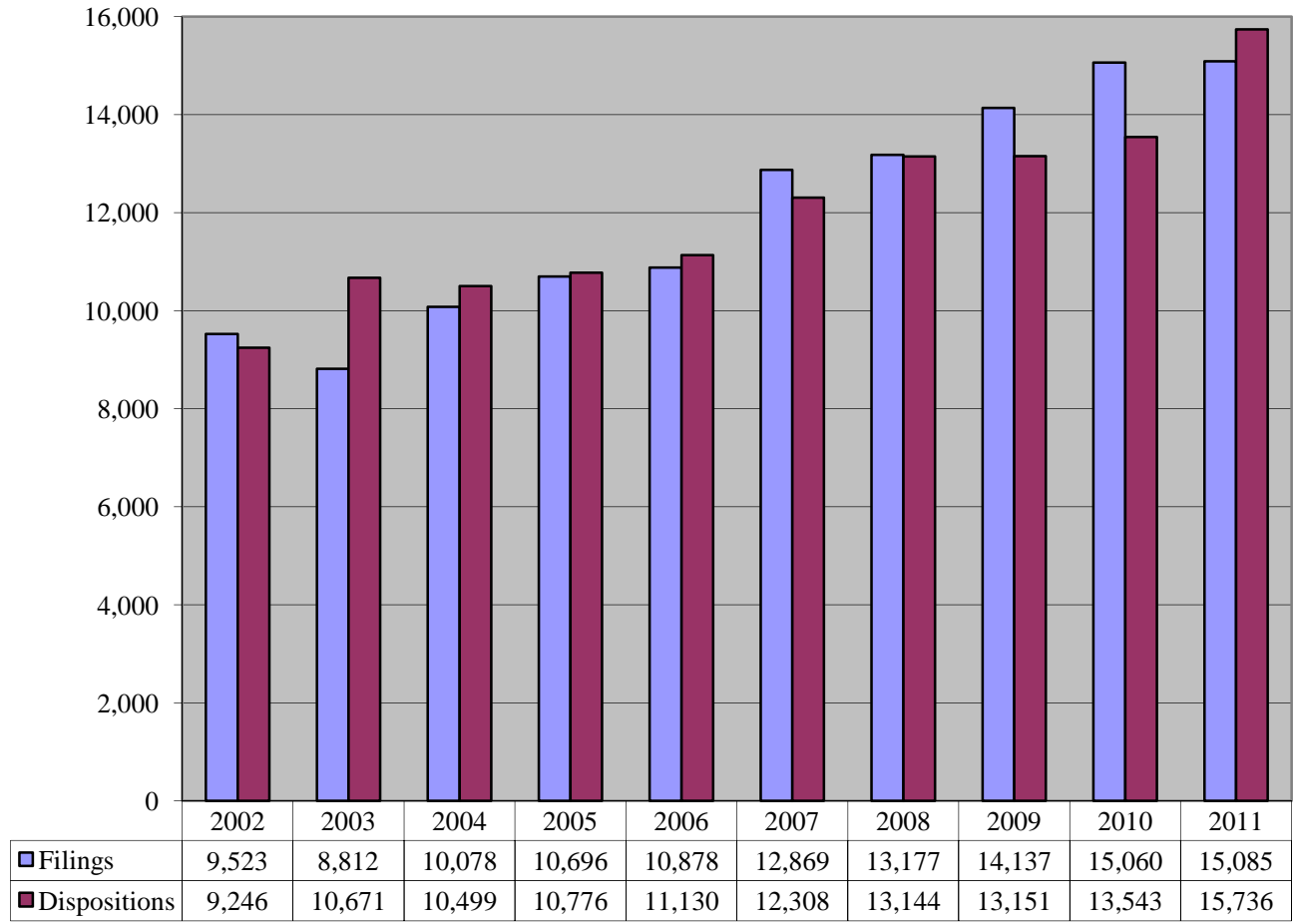
SUPERIOR COURT

Caseload Comparison - Fiscal Years 2010-2011 - Civil Case Filings				
	2010	2011	Change	% Change
New Castle County	10,176	10,313	137	1.3%
Kent County	2,380	2,129	-251	-10.5%
Sussex County	2,504	2,643	139	5.6%
State	15,060	15,085	25	0.2%

Caseload Comparison - Fiscal Years 2010-2011 - Civil Case Dispositions				
	2010	2011	Change	% Change
New Castle County	9,498	10,488	990	10.4%
Kent County	1,940	2,487	547	28.2%
Sussex County	2,105	2,761	656	31.2%
State	13,543	15,736	2193	16.2%

Source: Prothonotary's Offices, Superior Court; Administrative Office of the Courts

Superior Court Civil 10 Year Caseload Trend



Fiscal Year

SUPERIOR COURT

Caseload Breakdowns - Fiscal Year 2011 - Criminal Filings									
	Indictment		Rule 9 Warrant		Information		Other*		Total
New Castle County	3,180	74.9%	163	3.8%	880	20.7%	21	0.5%	4,244
Kent County	1,553	85.8%	63	3.5%	190	10.5%	5	0.3%	1,811
Sussex County	671	31.6%	175	8.2%	1,279	60.2%	0	0.0%	2,125
State	5,404	66.1%	401	4.9%	2,349	28.7%	26	0.3%	8,180

Caseload Breakdowns - Fiscal Year 2011 - Criminal Dispositions									
	Trial		Guilty Plea**		Nolle Prosequi		Remand/Transfer		
New Castle County	130	3.1%	2,922	70.5%	591	14.3%	2		0.0%
Kent County	26	1.4%	1,229	66.1%	327	17.6%	3		0.2%
Sussex County	27	1.3%	1,495	74.2%	256	12.7%	1		0.0%
State	183	2.3%	5,646	70.4%	1,174	14.6%	6		0.1%

Caseload Breakdowns - Fiscal Year 2011 - Criminal Dispositions (cont.)									
	Dismissal		FOP/Drug Court		Consolidation		Total		
New Castle County	68	1.6%	306	7.4%	123	3.0%			4,142
Kent County	45	2.4%	124	6.7%	104	5.6%			1,858
Sussex County	4	0.2%	53	2.6%	180	8.9%			2,016
State	117	1.5%	483	6.0%	407	5.1%			8,016

* Includes appeals, transfers, reinstatements and severances.

** Includes Probation Before Judgment

FOP = First Offender Program

Source: Court Administrator and Case Scheduling Office, Superior Court; Administrative Office of the Courts

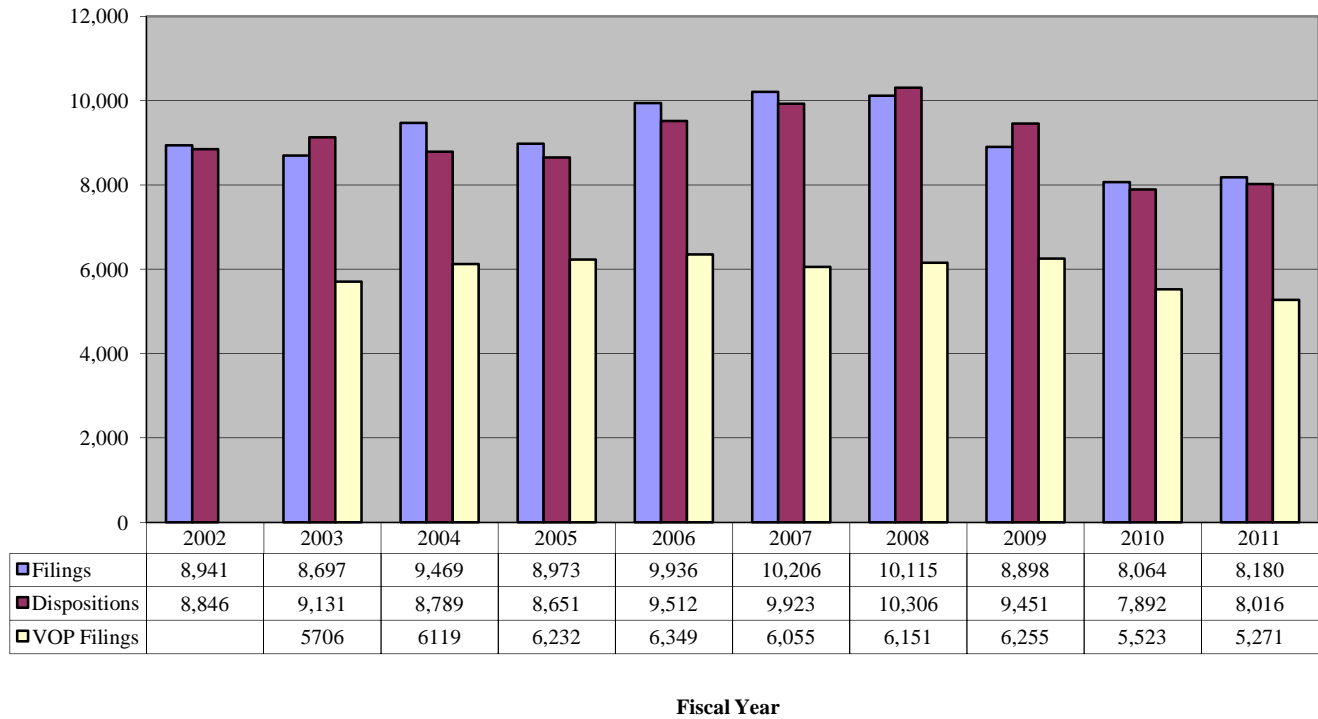
SUPERIOR COURT

Caseload Comparison - Fiscal Years 2010-2011 - Criminal Case Filings				
	2010	2011	Change	% Change
New Castle County	4,137	4,244	107	2.6%
Kent County	1,844	1,811	-33	-1.8%
Sussex County	2,083	2,125	42	2.0%
State	8,064	8,180	116	1.4%

Caseload Comparison - Fiscal Years 2010-2011 - Criminal Case Dispositions				
	2010	2011	Change	% Change
New Castle County	4,060	4,142	82	2.0%
Kent County	1,789	1,858	69	3.9%
Sussex County	2,043	2,016	-27	-1.3%
State	7,892	8,016	124	1.6%

Source: Court Administrator and Case Scheduling Office, Superior Court; Administrative Office of the Courts

Superior Court Criminal 10-Year Caseload Trend



The number of VOP filings is not available for 2002.

SUPERIOR COURT

Types of Dispositions Fiscal Year 2011 - Criminal Felony Guilty Pleas						
	Pled Guilty Original		Pled Guilty Lesser		Total	
New Castle County	1,790	89.6%	208	10.4%	1,998	100.0%
Kent County	621	82.0%	136	18.0%	757	100.0%
Sussex County	769	88.2%	103	11.8%	872	100.0%
State	3,180	87.7%	447	12.3%	3,627	100.0%

Types of Dispositions Fiscal Year 2011 - Criminal Misdemeanor Guilty Pleas						
	Pled Guilty Original		Pled Guilty Lesser*		Total	
New Castle County	528	57.1%	396	42.9%	924	100.0%
Kent County	195	41.3%	277	58.7%	472	100.0%
Sussex County	394	64.9%	213	35.1%	607	100.0%
State	1,117	55.8%	886	44.2%	2,003	100.0%

Types of Dispositions Fiscal Year 2011 - Criminal Total Guilty Pleas						
	Pled Guilty Original		Pled Guilty Lesser*		Total	
New Castle County	2,318	79.3%	604	20.7%	2,922	100.0%
Kent County	816	66.4%	413	33.6%	1,229	100.0%
Sussex County	1,163	78.6%	316	21.4%	1,479	100.0%
State	4,297	76.3%	1,333	23.7%	5,630	100.0%

* Includes Probation Before Judgment

Source: Court Administrator and Case Scheduling Office, Superior Court; Administrative Office of the Courts

SUPERIOR COURT

Types of Dispositions Fiscal Year 2011 - Criminal Trials - Part One							
	Jury Trial		Non-Jury Trial		Total		
New Castle County	111	75.5%	36	24.5%	147	100.0%	
Kent County	25	96.2%	1	3.8%	26	100.0%	
Sussex County	26	96.3%	1	3.7%	27	100.0%	
State	162	81.0%	38	19.0%	200	100.0%	
	Guilty		Not Guilty*		No Final Disposition**		Total
New Castle County	111	75.5%	19	12.9%	17	11.6%	147
Kent County	17	65.4%	5	19.2%	4	15.4%	26
Sussex County	22	81.5%	5	18.5%	0	0.0%	27
State	150	75.0%	29	14.5%	21	10.5%	200

Types of Dispositions Fiscal Year 2011 - Criminal Trials - Part Two								
Jury Trial								
	Guilty	Guilty LIO	Not Guilty	Pled Guilty At Trial	Nol Pros/Dismissed at Trial	Mistrial	Hung Jury	Total
New Castle County	55	12	17	10	2	7	8	111
Kent County	12	0	3	5	1	0	4	25
Sussex County	21	0	4	0	1	0	0	26
State	88	12	24	15	4	7	12	162
Non-Jury Trial								
	Guilty	Guilty LIO	Not Guilty	Pled Guilty	Nol Pros/Dismissed at Trial	Mistrial		Total***
New Castle County	31	2	0	1	0	0		34
Kent County	0	0	1	0	0	0		1
Sussex County	1	0	0	0	0	0		1
State	32	2	1	1	0	0		36
All Trials								
	Guilty	Guilty LIO	Not Guilty	Pled Guilty at Trial	Nol Pros/Dismissed at Trial	Mistrial	Hung Jury	Total***
New Castle County	86	14	17	11	2	7	8	145
Kent County	12	0	4	5	1	0	4	26
Sussex County	22	0	4	0	1	0	0	27
State	120	14	25	16	4	7	12	198

Types of Dispositions Fiscal Year 2011 - Criminal Nolle Prosequis						
	Nolle Prosequis By Special Condition		Nolle Prosequis By Merit		Total	
New Castle County	213	36.0%	378	64.0%	591	100.0%
Kent County	184	56.3%	143	43.7%	327	100.0%
Sussex County	31	12.1%	225	87.9%	256	100.0%
State	428	36.5%	746	63.5%	1,174	100.0%

* Includes Acquittals, Dismissals at Trial and Nolle Prosequis at Trial

** Hung Juries, Mistrials, and Reserved Decisions

*** Does not include Reserved Decisions

LIO = Lesser Included Offense

Nol Pros = Nolle Prosequi

Source: Court Administrator and Case Scheduling Office, Superior Court; Administrative Office of the Courts

SUPERIOR COURT

Performance Comparison - Fiscal Years 2010-2011 - Criminal Cases				
Average Time From Arrest to Disposition				
	2010	2011	Change	% Change
New Castle County	120.2 days	123.0 days	2.8 days	2.3%
Kent County	116.0 days	123.0 days	7.0 days	6.0%
Sussex County	137.1 days	138.1 days	1.0 days	0.7%
State	124.4 days	128.0 days	3.6 days	2.9%

Performance Comparison - Fiscal Years 2010-2011 - Criminal Cases				
Average Time From Indictment to Disposition				
	2010	2011	Change	% Change
New Castle County	87.2 days	87.7 days	0.5 days	0.6%
Kent County	69.5 days	70.4 days	0.9 days	1.3%
Sussex County	89.0 days	98.1 days	9.1 days	10.2%
State	81.9 days	85.4 days	3.5 days	4.3%

Source: Court Administrator and Case Scheduling Offices, Superior Court; Administrative Office of the Courts

SUPERIOR COURT

Performance Summary Fiscal Year 2011 - Criminal Cases - Elapsed Time			
	Total Number of Cases Disposed	Average Time from Arrest to Disposition	Average Time from Indictment to Disposition
New Castle County	4,142	123.0 days	87.7 days
Kent County	1,858	123.0 days	70.4 days
Sussex County	2,016	138.1 days	98.1 days
State	8,016	128.0 days	85.4 days

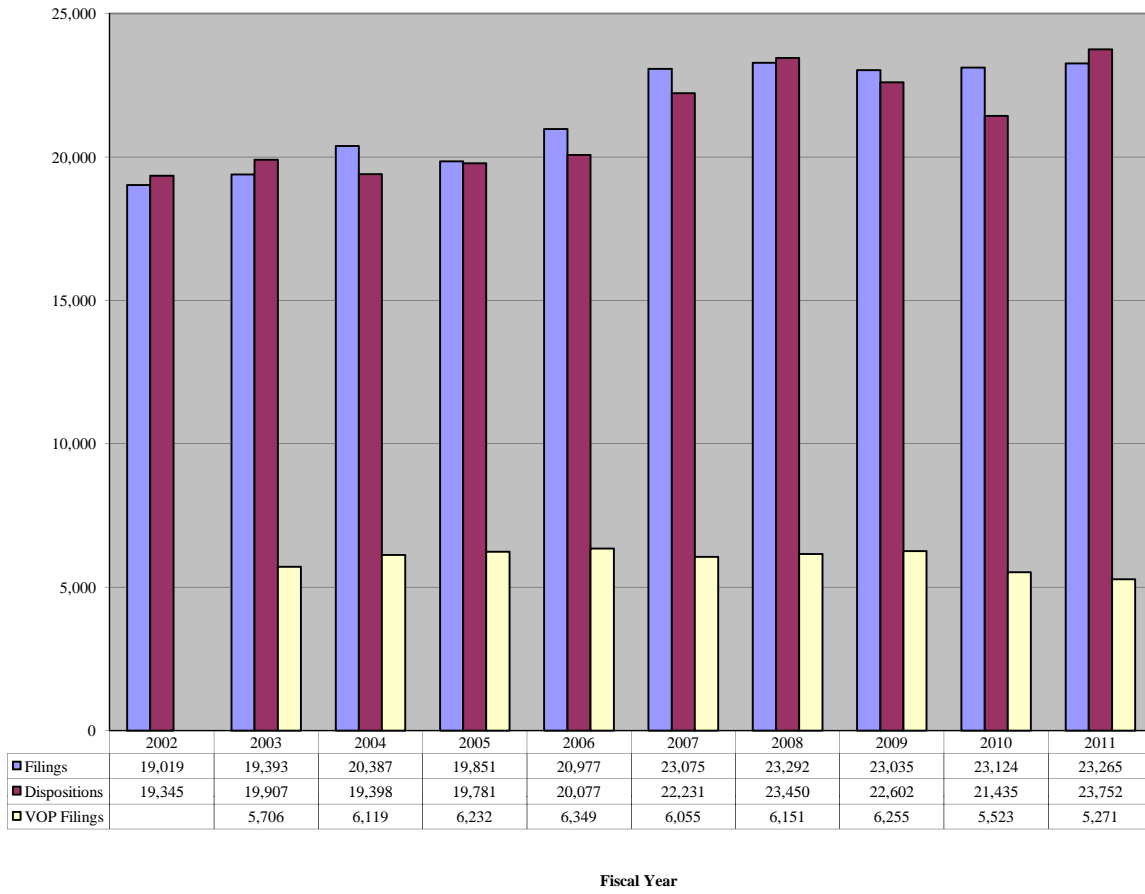
Performance Summary Fiscal Year 2011 - Criminal Cases - Compliance With Speedy Trial Standards							
	Total Number of Cases Disposed	Disposed of within 120 Days of Indictment (90%)		Disposed of within 180 Days of Indictment (98%)		Disposed of within 365 Days of Indictment (100%)	
New Castle County	4,142	2,893	69.8%	3,743	90.4%	4,087	98.7%
Kent County	1,858	1,549	83.4%	1,725	92.8%	1,843	99.2%
Sussex County	2,016	1,625	80.6%	1,874	93.0%	2,016	100.0%
State	8,016	6,067	75.7%	7,342	91.6%	7,946	99.1%

Criminal Cases Performance Explanatory Notes

- The performance summary charts measure the average time from the date of arrest to the date of disposition as well as the average time from the date of indictment/information to the date of disposition.
- In measuring the elapsed time for defendants for the purpose of determining the rate of compliance with the speedy trial standards, the following are excluded by the Court:
 - For all capiases, the time between the date that the capias is issued and the date that it is executed.
 - For all Rule 9 summonses and Rule 9 warrants, the time between the arrest and the indictment/information, if any.
 - For all nolle prosequis, the time between the scheduled trial date and the actual filing date of the nolle prosequis.
 - For all mental examinations, the time between the date that the examination is ordered and the date of the receipt of the results.
 - For all defendants deemed to be incompetent, the period in which the defendant is considered incompetent.

Source: Court Administrator and Case Scheduling Offices, Superior Court; Administrative Office of the Courts

Superior Court Total 10-Year Caseload Trend



The number of VOP filings is not available for 2002.

SUPERIOR COURT

Caseload Comparison - Fiscal Years 2010-2011 - Total Case Filings				
	2010	2011	Change	% Change
New Castle County	14,313	14,557	244	1.7%
Kent County	4,224	3,940	-284	-6.7%
Sussex County	4,587	4,768	181	3.9%
State	23,124	23,265	141	0.6%

Caseload Comparison - Fiscal Years 2010-2011 - Total Case Dispositions				
	2010	2011	Change	% Change
New Castle County	13,558	14,630	1,072	7.9%
Kent County	3,729	4,345	616	16.5%
Sussex County	4,148	4,777	629	15.2%
State	21,435	23,752	2,317	10.8%

Source: Court Administrator, Prothonotaries Offices, and Case Scheduling Offices, Superior Court; Administrative Office of the Courts