



2013 Annual Report Statistical Information for the Delaware Judiciary



SUPREME COURT
State of Delaware

2013 Annual Report Statistical Information

SUPREME COURT

Caseload Comparison - Fiscal Years 2012-2013 - Filings				
	2012	2013	Change	% Change
Criminal Appeals	381	325	-56	-14.7%
Civil Appeals	330	300	-30	-9.1%
Certifications	0	2	2	0%
Original Applications	28	17	-11	-39.3%
Bd. on Prof. Resp.	12	15	3	25.0%
Bd. of Bar Exam	0	0	0	0%
Bd. on Un. Prac. Law	0	0	0	0%
Advisory Opinions	1	0	-1	-100%
Other	5	2	-3	-60.0%
Total	757	661	-96	-12.7%

Caseload Comparison - Fiscal Years 2012-2013 - Dispositions				
	2012	2013	Change	% Change
Criminal Appeals	385	353	-32	-8.3%
Civil Appeals	314	321	7	2.2%
Certifications	2	1	-1	-50%
Original Applications	31	18	-13	-41.9%
Bd. on Prof. Resp.	9	17	8	89%
Bd. of Bar Exam	1	0	-1	-100%
Bd. on Un. Prac. Law	0	0	0	0%
Advisory Opinions	1	0	-1	-100%
Other	4	2	-2	-50%
Total	747	712	-35	-4.7%

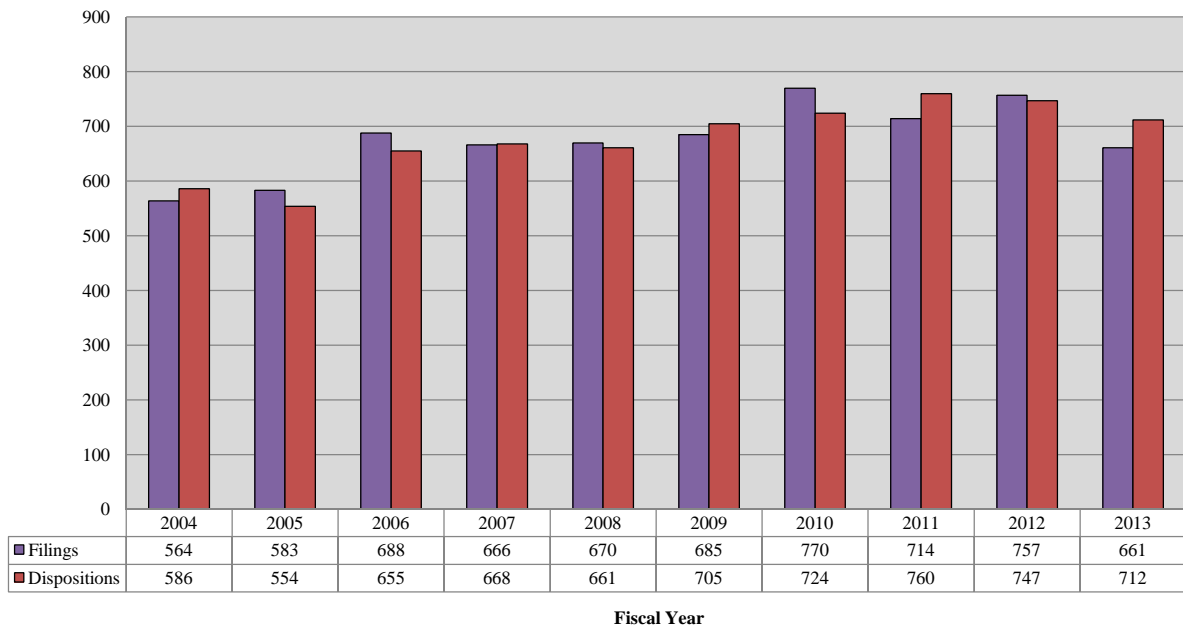
Bd. on Prof. Resp. = Board on Professional Responsibility.

Bd. of Bar Exam. = Board of Bar Examiners.

Bd. on Un. Prac. Law = Board on the Unauthorized Practice of Law.

Source: Court Administrator and Clerk of the Supreme Court; Administrative Office of the Courts.

Supreme Court 10-Year Total Caseload Trend



SUPREME COURT

Caseload Breakdowns - Fiscal Year 2013 - Filings										
	Court of Chancery		Superior Court		Family Court		Non-Court Originated		Total	
Criminal Appeals	0	0%	325	100%	0	0%	0	0%	325	100%
Civil Appeals	62	20.7%	172	57.3%	66	22.0%	0	0%	300	100%
Original Applications*	0	0%	0	0%	0	0%	36	100%	36	100%
Total	62	9.4%	497	75.2%	66	10.0%	36	5.4%	661	100%

Caseload Breakdowns - Fiscal Year 2013 - Dispositions										
	Court of Chancery		Superior Court		Family Court		Non-Court Originated		Total	
Criminal Appeals	0	0%	353	100%	0	0%	0	0%	353	100%
Civil Appeals	66	20.6%	181	56.4%	74	23.1%	0	0%	321	100%
Original Applications*	0	0%	0	0%	0	0%	38	100%	38	100%
Total	66	9.3%	534	75.0%	74	10.4%	38	5.3%	712	100%

*Original Applications include Certifications, Bd. On Prof. Resp., Bd. Of Bar Exam., Bd. on Un. Prac. Law, Advisory Opinions, and Other.

Bd. on Prof. Resp. = Board on Professional Responsibility.

Bd. of Bar Exam. = Board of Bar Examiners.

Bd. on Un. Prac. Law = Board on the Unauthorized Practice of Law.

Source: Court Administrator and Clerk of the Supreme Court; Administrative Office of the Courts.

SUPREME COURT

Types of Dispositions - Fiscal Year 2013 - Appeals										
	Affirmed		Affirmed Part/Reversed Part		Reversed		Remanded		Voluntary Dismissal	
Criminal Appeals	208	58.9%	1	0.3%	21	5.9%	13	3.7%	25	7.1%
Civil Appeals	164	45.7%	11	3.1%	19	5.3%	5	1.4%	48	13.4%
Total	372	52.2%	12	1.7%	40	5.6%	18	2.5%	73	10.3%
	Court Dismissal		Leave to Appeal Denied		Other*				Total	
Criminal Appeals	85	24.1%	0	0.0%	0	0.0%			353	100%
Civil Appeals	58	16.2%	34	9.5%	20	5.6%			359	100%
Total	143	20.1%	34	4.8%	20	2.8%			712	100%

Methods of Dispositions - Fiscal Year 2013						
	Assigned Opinion		Per Curiam Order		Written Order	
Criminal Appeals	37	10.5%	0	0%	291	82.4%
Civil Appeals	55	17.1%	3	1%	218	67.9%
Certifications	1	100%	0	0%	0	0%
Original Applications	0	0%	0	0%	16	88.9%
Bd. on Prof. Resp.	0	0%	2	12%	14	82.4%
Bd. of Bar Exam.	0	0%	0	0%	0	0%
Bd. on Un. Prac. Law	0	0%	0	0%	0	0%
Advisory Opinions	0	0%	0	0%	0	0%
Other	0	0%	0	0%	2	100%
Total	93	13.1%	5	1%	541	76.0%
	Voluntary Dismissal		Other*		Total	
Criminal Appeals	25	7.1%	0	0%	353	100%
Civil Appeals	45	14.0%	0	0%	321	100%
Certifications	0	0.0%	0	0%	1	100%
Original Applications	2	11.1%	0	0%	18	100%
Bd. on Prof. Resp.	1	5.9%	0	0%	17	100%
Bd. of Bar Exam.	0	0%	0	0%	0	-
Bd. on Un. Prac. Law	0	0%	0	0%	0	-
Advisory Opinions	0	0%	0	0%	0	-
Other	0	0%	0	0%	2	100%
Total	73	10.3%	0	0%	712	100%

*Includes any types or methods of dispositions not further broken down in these categories.

Bd. on Prof. Resp. = Board on Professional Responsibility.

Bd. of Bar Exam. = Board of Bar Examiners.

Bd. on Un. Prac. Law = Board on the Unauthorized Practice of Law.

Source: Court Administrator and Clerk of the Supreme Court; Administrative Office of the Courts.

SUPREME COURT

Performance Summary - Fiscal Year 2013 - Average Elapsed Time to Disposition					
	Number of Dispositions	Average Time From Filing to Disposition		Average Time From Submission to Disposition*	
Criminal Appeals	353	172.8	days	31.3	days
Civil Appeals	321	176.7	days	24.4	days
Certifications	1	239.0	days	62.0	days
Original Applications	18	35.2	days	13.8	days
BPR&BBE	17	38.5	days	9.4	days
Bd. on Un. Prac. Law	0	-	days	-	days
Advisory Opinions	0	-	days	-	days
Other	2	40.5	days	11.0	days
Total	712	168.1	days	28.6	days

Caseload Comparison - Fiscal Years 2012-2013 - Average Time from Filing to Disposition						
	2012		2013		Change	% Change
Criminal Appeals	181.8	days	172.8	days	-9.0 days	-5.0%
Civil Appeals	164.5	days	176.7	days	12.2 days	7.4%
Certifications	163.5	days	239.0	days	75.5 days	46.2%
Original Applications	53.8	days	35.2	days	-18.6 days	-34.6%
BPR & BBE	64.2	days	38.5	days	-25.7 days	-40.0%
Bd. on Un. Prac. Law	0.0	days	-	days	- days	-
Advisory Opinions	-	days	-	days	- days	-
Other	26.8	days	40.5	days	13.7 days	51.1%
Total	166.3	days	168.1	days	1.8 days	1.1%

*Average time from date submitted for judicial decision to actual date of disposition. The time for a case that is submitted and disposed in the same day is zero. Not all Supreme Court cases require a judicial decision.

BPR & BBE = Board on Professional Responsibility and Board of Bar Examiners.

Bd. on Un. Prac. Law = Board on the Unauthorized Practice of Law.

Source: Court Administrator and Clerk of the Supreme Court; Administrative Office of the Courts.

SUPREME COURT

Performance Breakdowns - Fiscal Year 2013 - Elapsed Time by Disposition Type					
	Number of Dispositions	Average Time From Filing to Disposition		Average Time From Submission to Disposition*	
Affirmed	372	207.4	days	37.9	days
Affirmed Part/Reversed Part	12	323.2	days	67.4	days
Reversed	40	346.3	days	45.0	days
Remanded	18	180.9	days	34.7	days
Voluntary Dismissal	73	100.0	days	0.0	days
Court Dismissal	143	79.6	days	12.7	days
Leave to Appeal Denied	34	40.8	days	26.9	days
Other	20	97.5	days	20.1	days
Total	712	168.1	days	28.6	days

Performance Breakdowns - Fiscal Year 2013 - Elapsed Time by Disposition Method					
	Number of Dispositions	Average Time From Filing to Disposition		Average Time From Submission to Disposition*	
Assigned Opinion	93	330.4	days	54.8	days
Per Curiam Opinion	5	209.4	days	36.2	days
Written Order	541	148.9	days	28.0	days
Voluntary Dismissal	73	100.0	days	0.0	days
Other	0	-	days	-	days
Total	712	168.1	days	28.6	days

*Average time from date submitted for judicial decision to actual date of disposition. The time for a case that is submitted and disposed in the same day is zero. Not all Supreme Court cases require a judicial decision.

Source: Court Administrator and Clerk of the Supreme Court; Administrative Office of the Courts.



COURT OF CHANCERY
State of Delaware

2013 Annual Report Statistical Information

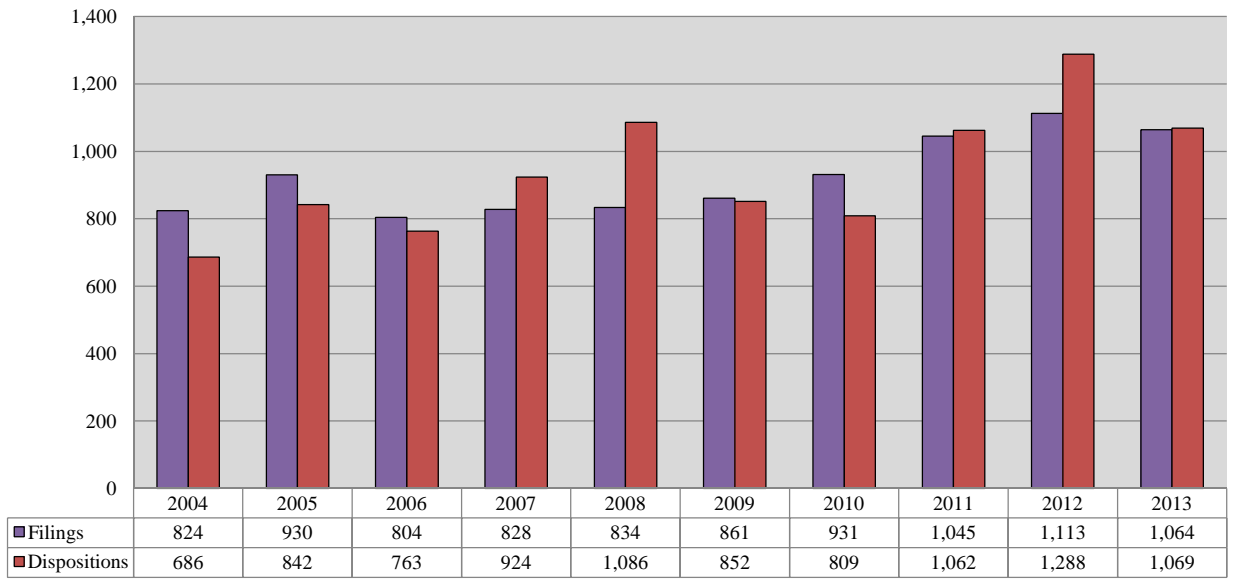
COURT OF CHANCERY

Caseload Comparison - Fiscal Years 2012-2013 - Civil Filings				
	2012	2013	Change	% Change
State	1,113	1,064	-49	-4.4%

Caseload Comparison - Fiscal Years 2012-2013 - Civil Dispositions				
	2012	2013	Change	% Change
State	1,288	1,069	-219	-17.0%

Source: Registers in Chancery; Administrative Office of the Courts.

Court of Chancery 10-Year Civil Caseload Trend



Fiscal Year

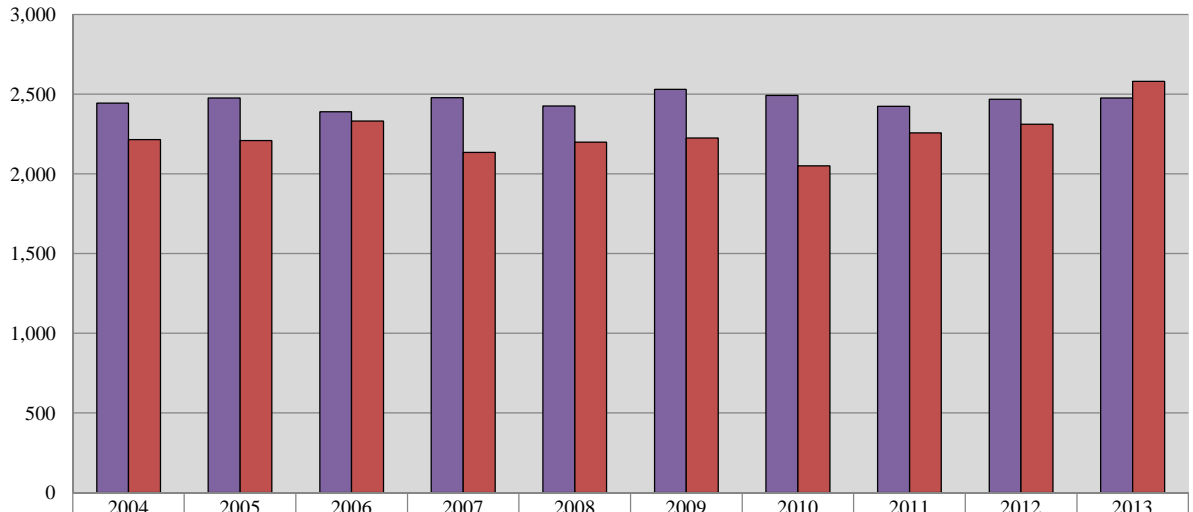
COURT OF CHANCERY

Caseload Comparison - Fiscal Years 2012-2013 - Estates Filings				
	2012	2013	Change	% Change
State	2,469	2,476	7	0.3%

Caseload Comparison - Fiscal Years 2012-2013 - Estates Dispositions				
	2012	2013	Change	% Change
State	2,312	2,582	270	11.7%

Source: Register of Wills; Administrative Office of the Courts.

Court of Chancery 10-Year Estates Caseload Trend



■ Filings	2,445	2,476	2,390	2,479	2,427	2,531	2,492	2,424	2,469	2,476
■ Dispositions	2,215	2,210	2,333	2,135	2,199	2,225	2,051	2,258	2,312	2,582

Fiscal Year

COURT OF CHANCERY

Caseload Comparison - Fiscal Years 2012-2013 - Miscellaneous Matters Filings				
	2012	2013	Change	% Change
State	667	615	-52	-7.8%

Caseload Comparison - Fiscal Years 2012-2013 - Miscellaneous Matters Dispositions				
	2012	2013	Change	% Change
State	2,432	1,328	-1,104	-45.4%

Source: Registers of Wills; Administrative Office of the Courts.

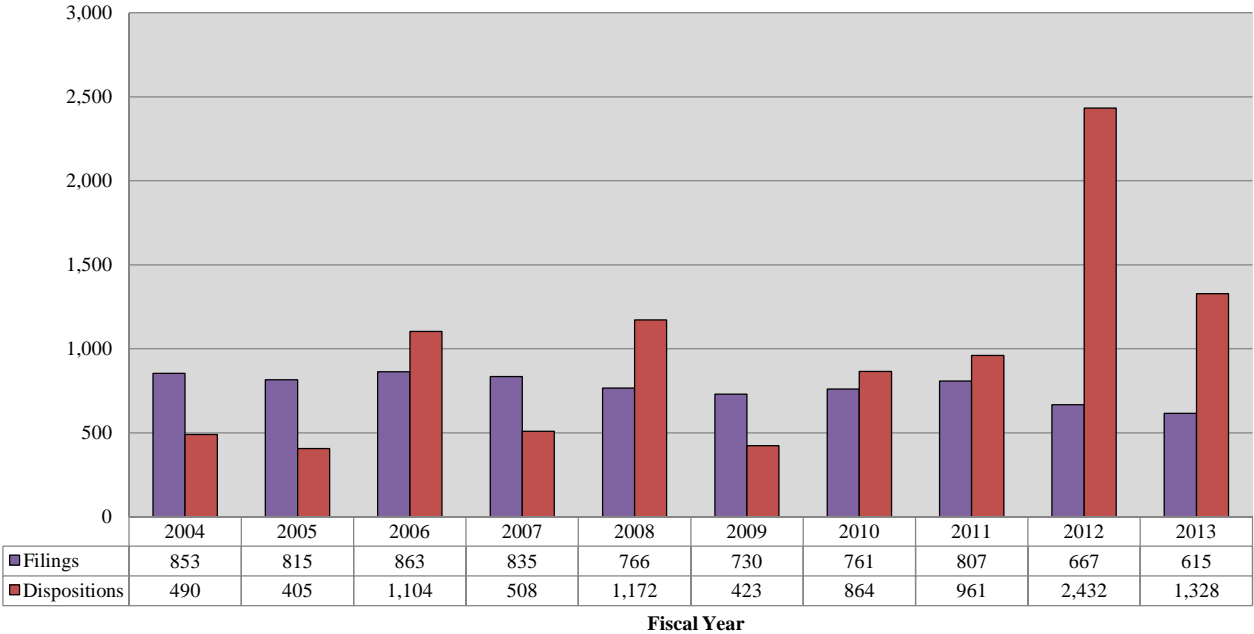
COURT OF CHANCERY

Caseload Breakdown - Fiscal Year 2013 - Miscellaneous Matters Filings										
	Guardians for Minors		Guardians for Infirm		Trusts		Other Matters		Total	
State	208	33.8%	271	44.1%	12	2.0%	124	20.2%	615	100%

Caseload Breakdown - Fiscal Year 2013 - Miscellaneous Matters Dispositions										
	Guardians for Minors		Guardians for Infirm		Trusts		Other Matters		Total	
State	646	48.6%	314	23.6%	31	2.3%	337	25.4%	1,328	100%

Source: Registers in Chancery; Administrative Office of the Courts.

Court of Chancery 10-Year Miscellaneous Caseload Trend



COURT OF CHANCERY

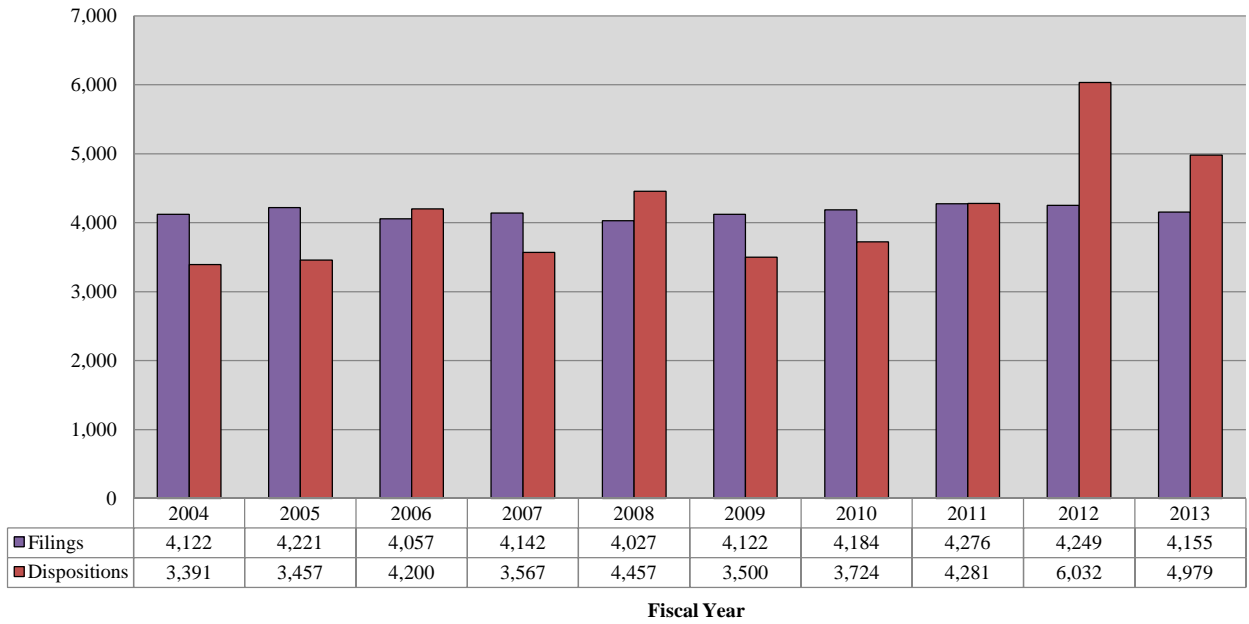
Caseload Comparison - Fiscal Years 2012-2013 - Total Case Filings*				
	2012	2013	Change	% Change
State	4,249	4,155	-94	-2.2%

Caseload Comparison - Fiscal Years 2012-2013 - Total Case Dispositions*				
	2012	2013	Change	% Change
State	6,032	4,979	-1,053	-17.5%

*Total includes Civil, Miscellaneous, and Estates.

Source: Registers in Chancery; Registers of Wills; Administrative Office of the Courts.

Court of Chancery 10-Year Total Caseload Trend (Civil, Miscellaneous & Estates)





SUPERIOR COURT
State of Delaware

2013 Annual Report Statistical Information

SUPERIOR COURT

Caseload Comparison - Fiscal Years 2012-2013 - Civil Case Filings				
	2012	2013	Change	% Change
New Castle County	8,988	8,737	-251	-2.9%
Kent County	1,612	1,378	-234	-17.0%
Sussex County	1,830	1,611	-219	-13.6%
State	12,430	11,726	-704	-6.0%

Caseload Comparison - Fiscal Years 2012-2013 - Civil Case Dispositions				
	2012	2013	Change	% Change
New Castle County	10,263	8,438	-1,825	-21.6%
Kent County	2,075	1,348	-727	-53.9%
Sussex County	2,084	1,833	-251	-13.7%
State	14,422	11,619	-2,803	-24.1%

Source: Prothonotary's Offices, Superior Court; Administrative Office of the Courts.

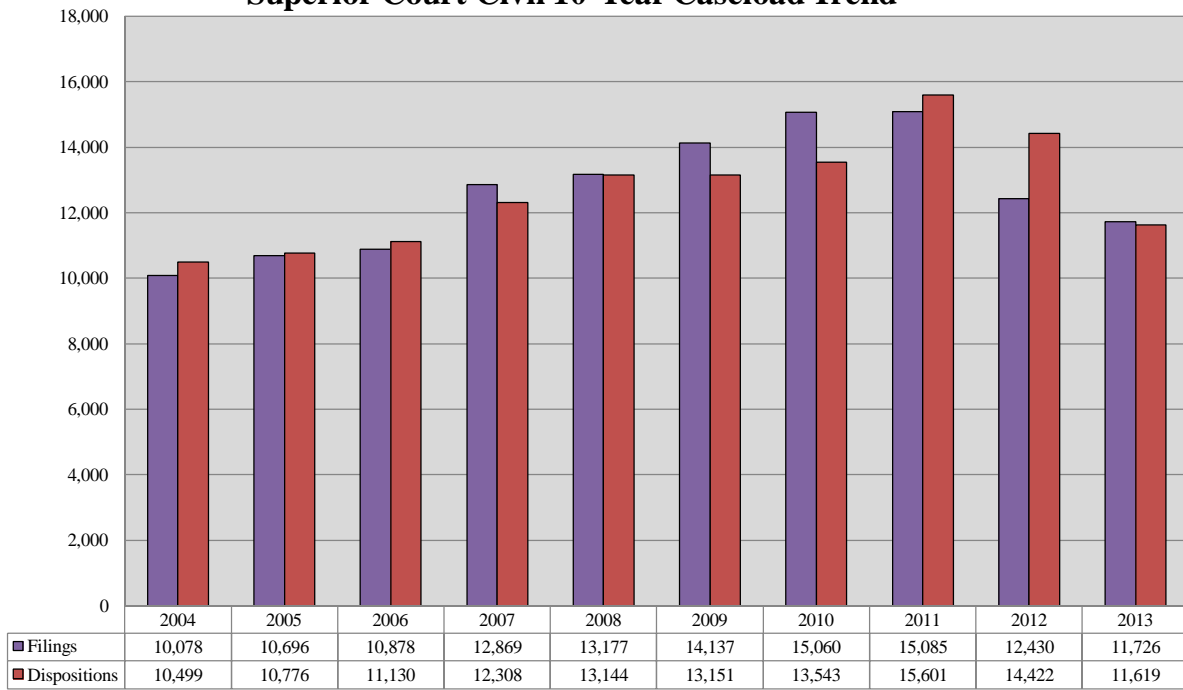
SUPERIOR COURT

Caseload Breakdowns - Fiscal Year 2013 - Civil Case Filings						
	Complaints		Mechanic's Liens and Mortgages		Appeals	
New Castle County	3,664	41.9%	1,134	13.0%	152	1.7%
Kent County	502	36.4%	408	29.6%	40	2.9%
Sussex County	366	22.7%	548	34.0%	50	3.1%
State	4,532	38.6%	2,090	17.8%	242	2.1%
	Involuntary Commitments		Miscellaneous		Total	
New Castle County	1,513	17.3%	2,274	26.0%	8,737	100%
Kent County	109	7.9%	319	23.1%	1,378	100%
Sussex County	12	0.7%	635	39.4%	1,611	100%
State	1,634	13.9%	3,228	27.5%	11,726	100%

Caseload Breakdowns - Fiscal Year 2013 - Civil Case Dispositions						
	Complaints		Mechanic's Liens and Mortgages		Appeals	
New Castle County	3,250	38.5%	1,276	15.1%	152	1.8%
Kent County	502	37.2%	384	28.5%	43	3.2%
Sussex County	435	23.7%	634	34.6%	75	4.1%
State	4,187	36.0%	2,294	19.7%	270	2.3%
	Involuntary Commitments		Miscellaneous		Total	
New Castle County	1,496	17.7%	2,264	26.8%	8,438	100%
Kent County	102	7.6%	317	23.5%	1,348	100%
Sussex County	43	2.3%	646	35.2%	1,833	100%
State	1,641	14.1%	3,227	27.8%	11,619	100%

Source: Prothonotary's Offices, Superior Court; Administrative Office of the Courts.

Superior Court Civil 10-Year Caseload Trend



Fiscal Year

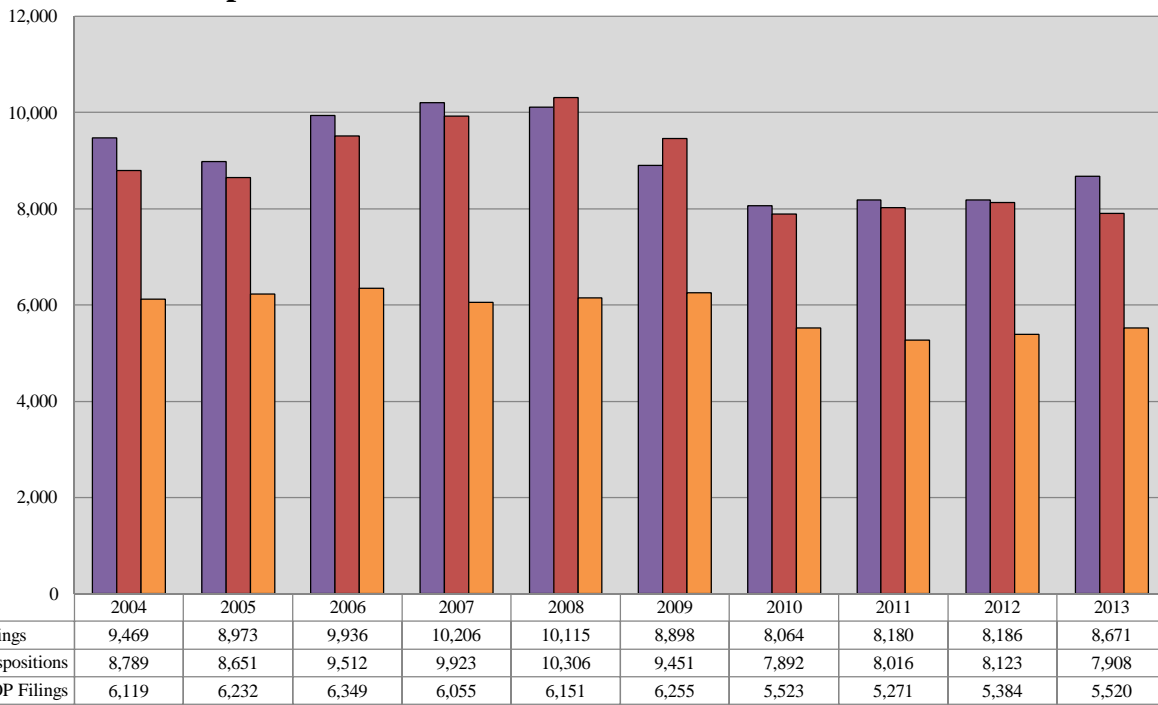
SUPERIOR COURT

Caseload Comparison - Fiscal Years 2012-2013 - Criminal Case Filings				
	2012	2013	Change	% Change
New Castle County	4,242	4,411	169	3.8%
Kent County	1,683	1,760	77	4.4%
Sussex County	2,261	2,500	239	9.6%
State	8,186	8,671	485	5.6%

Caseload Comparison - Fiscal Years 2012-2013 - Criminal Case Dispositions				
	2012	2013	Change	% Change
New Castle County	4,217	4,104	-113	-2.8%
Kent County	1,769	1,652	-117	-7.1%
Sussex County	2,137	2,152	15	0.7%
State	8,123	7,908	-215	-2.7%

Source: Court Administrator and Case Scheduling Office, Superior Court; Administrative Office of the Courts.

Superior Court Criminal 10-Year Caseload Trend



Fiscal Year

VOP = Violation of Probation.

SUPERIOR COURT

Caseload Breakdowns- Fiscal Year 2013 - Criminal Filings									
	Indictment		Rule 9 Warrant		Information		Other*		Total
New Castle County	3,182	72.1%	178	4.0%	1,014	23.0%	37	0.8%	4,411
Kent County	1,361	77.3%	21	1.2%	360	20.5%	18	1.0%	1,760
Sussex County	951	38.0%	229	9.2%	1,320	52.8%	0	0%	2,500
State	5,494	63.4%	428	4.9%	2,694	31.1%	55	0.6%	8,671

Caseload Breakdowns- Fiscal Year 2013 - Criminal Dispositions									
	Trial		Guilty Plea**		Nolle Prosequi		Remand/Transfer		
New Castle County	124	3.0%	2,876	70.1%	510	12.4%	1	0.0%	
Kent County	26	1.6%	1,104	66.8%	255	15.4%	5	0.3%	
Sussex County	15	0.7%	1,662	77.2%	268	12.5%	2	0.1%	
State	165	2.1%	5,642	71.3%	1,033	13.1%	8	0.1%	
	Dismissal		FOP/Drug Court		Consolidation		Total		
New Castle County	67	1.6%	354	8.6%	172	4.2%	4,104	100%	
Kent County	37	2.2%	134	8.1%	91	5.5%	1,652	100%	
Sussex County	27	1.3%	25	1.2%	153	7.1%	2,152	100%	
State	131	1.7%	513	6.5%	416	5.3%	7,908	100%	

*Includes appeals, transfers, reinstatements, and severances.

**Includes Probation Before Judgment.

FOP = First Offender Program.

Source: Court Administrator and Case Scheduling Office, Superior Court; Administrative Office of the Courts.

SUPERIOR COURT

Types of Dispositions - Fiscal Year 2013 - Criminal Trials - Part One							
	Jury Trial		Non-Jury Trial		Total		
New Castle County	134	85.4%	23	14.6%	157	100%	
Kent County	18	94.7%	1	5.3%	19	100%	
Sussex County	14	93.3%	1	6.7%	15	100%	
State	166	86.9%	25	13.1%	191	100%	

	Guilty		Not Guilty*		No Final Disposition**		Total	
New Castle County	94	59.9%	30	19.1%	33	21.0%	157	100%
Kent County	14	73.7%	4	21.1%	1	5.3%	19	100%
Sussex County	12	80.0%	2	13.3%	1	6.7%	15	100%
State	120	62.8%	36	18.8%	35	18.3%	191	100%

*Includes Acquittals, Dismissals at Trial, and Nolle Prosequis at Trial.

**Includes Hung Juries, Mistrials, and Reserved Decisions.

Source: Court Administrator and Case Scheduling Office, Superior Court; Administrative Office of the Courts.

SUPERIOR COURT

Types of Dispositions - Fiscal Year 2013 - Criminal Trials - Part Two

Jury Trial								
	Guilty	Guilty LIO	Not Guilty	Pled Guilty at Trial	Nol Pros/Dismissed at Trial	Mistrial	Hung Jury	Total
New Castle County	51	13	29	11	0	10	20	134
Kent County	10	1	4	2	0	0	1	18
Sussex County	9	2	2	0	0	1	0	14
State	70	16	35	13	0	11	21	166

Non-Jury Trial								
	Guilty	Guilty LIO	Not Guilty	Pled Guilty at Trial	Nol Pros/Dismissed at Trial	Mistrial		Total*
New Castle County	19	0	1	0	0	0		20
Kent County	1	0	0	0	0	0		1
Sussex County	1	0	0	0	0	0		1
State	21	0	1	0	0	0		22

All Trials								
	Guilty	Guilty LIO	Not Guilty	Pled Guilty at Trial	Nol Pros/Dismissed at Trial	Mistrial	Hung Jury	Total*
New Castle County	70	13	30	11	0	10	20	154
Kent County	11	1	4	2	0	0	1	19
Sussex County	10	2	2	0	0	1	0	15
State	91	16	36	13	0	11	21	188

Types of Dispositions Fiscal Year 2013 - Criminal Nolle Prosequis

	Nolle Prosequis By Special Condition		Nolle Prosequis By Merit		Total	
New Castle County	161	31.6%	349	68.4%	510	100%
Kent County	192	75.3%	63	24.7%	255	100%
Sussex County	35	13.1%	233	86.9%	268	100%
State	388	37.6%	645	62.4%	1033	100%

*Does not include Reserved Decisions.

LIO = Lesser Included Offense.

Nol Pros = Nolle Prosequi.

Source: Court Administrator and Case Scheduling Office, Superior Court; Administrative Office of the Courts.

SUPERIOR COURT

Types of Dispositions Fiscal Year 2013 - Criminal Felony Guilty Pleas						
	Pled Guilty Original		Pled Guilty Lesser		Total	
New Castle County	1,569	87.9%	216	12.1%	1,785	100%
Kent County	557	80.7%	133	19.3%	690	100%
Sussex County	826	83.0%	169	17.0%	995	100%
State	2,952	85.1%	518	14.9%	3,470	100%

Types of Dispositions Fiscal Year 2013 - Criminal Misdemeanor Guilty Pleas						
	Pled Guilty Original		Pled Guilty Lesser*		Total	
New Castle County	706	64.7%	385	35.3%	1,091	100%
Kent County	220	53.1%	194	46.9%	414	100%
Sussex County	476	71.4%	191	28.6%	667	100%
State	1,402	64.5%	770	35.5%	2,172	100%

Types of Dispositions Fiscal Year 2013 - Criminal Total Guilty Pleas						
	Pled Guilty Original		Pled Guilty Lesser*		Total	
New Castle County	2,275	79.1%	601	20.9%	2,876	100%
Kent County	777	70.4%	327	29.6%	1,104	100%
Sussex County	1,302	78.3%	360	21.7%	1,662	100%
State	4,354	77.2%	1,288	22.8%	5,642	100%

*Includes Probation Before Judgment.

Source: Court Administrator and Case Scheduling Office, Superior Court; Administrative Office of the Courts.

SUPERIOR COURT

Performance Summary Fiscal Year 2013 - Criminal Cases - Elapsed Time			
	Total Number of Cases Disposed	Average Time from Arrest to Disposition	Average Time from Indictment to Disposition
New Castle County	4,104	131.2 days	83.8 days
Kent County	1,652	143.3 days	84.3 days
Sussex County	2,152	167.2 days	123.5 days
State	7,908	143.5 days	94.7 days

Performance Summary Fiscal Year 2013 - Criminal Cases - Compliance with Speedy Trial Standards							
	Total Number of Cases Disposed	Disposed of within 120 Days of Indictment (90%)		Disposed of within 180 Days of Indictment (98%)		Disposed of within 365 Days of Indictment (100%)	
New Castle County	4,104	2,948	71.8%	3,744	91.2%	4,082	99.5%
Kent County	1,652	1,280	77.5%	1,465	88.7%	1,606	97.2%
Sussex County	2,152	1,644	76.4%	1,960	91.1%	2,152	100%
State	7,908	5,872	74.3%	7,169	90.7%	7,840	99.1%

Criminal Cases Performance Explanatory Notes - Fiscal Year 2013

1. The performance summary charts measure the average time from the date of arrest to the date of disposition as well as the average time from the date of indictment/information to the date of disposition.
2. In measuring the elapsed time for defendants for the purpose of determining the rate of compliance with the speedy trial standards, the following are excluded by the Court:
 - a) For all capiases, the time between the date that the capias is issued and the date that it is executed.
 - b) For all Rule 9 summonses and Rule 9 warrants, the time between the arrest and the indictment/information, if any.
 - c) For all nolle prosequis, the time between the scheduled trial date and the actual filing of the nolle prosequis.
 - d) For all mental examinations, the time between the date that the examination is ordered and the date of the receipt of the results.
 - e) For all defendants deemed to be incompetent, the period in which the defendant is considered incompetent.

Source: Court Administrator and Case Scheduling Office, Superior Court; Administrative Office of the Courts.

SUPERIOR COURT

Performance Comparison - Fiscal Years 2012-2013 - Criminal Cases - Average Time from Arrest to Disposition				
	2012 (in days)	2013 (in days)	Change (in days)	% Change
New Castle County	120.9	131.2	10.3	7.9%
Kent County	123.7	143.3	19.6	13.7%
Sussex County	46.3	167.2	120.9	72.3%
State	97.0	143.5	46.5	32.4%

Performance Comparison - Fiscal Years 2012-2013 - Criminal Cases - Average Time from Indictment to Disposition				
	2012 (in days)	2013 (in days)	Change (in days)	% Change
New Castle County	79.7	83.8	4.1	4.9%
Kent County	66.2	84.3	18.1	21.5%
Sussex County	15.8	123.5	107.7	87.2%
State	53.9	94.7	40.8	43.1%

Source: Court Administrator and Case Scheduling Office, Superior Court; Administrative Office of the Courts.

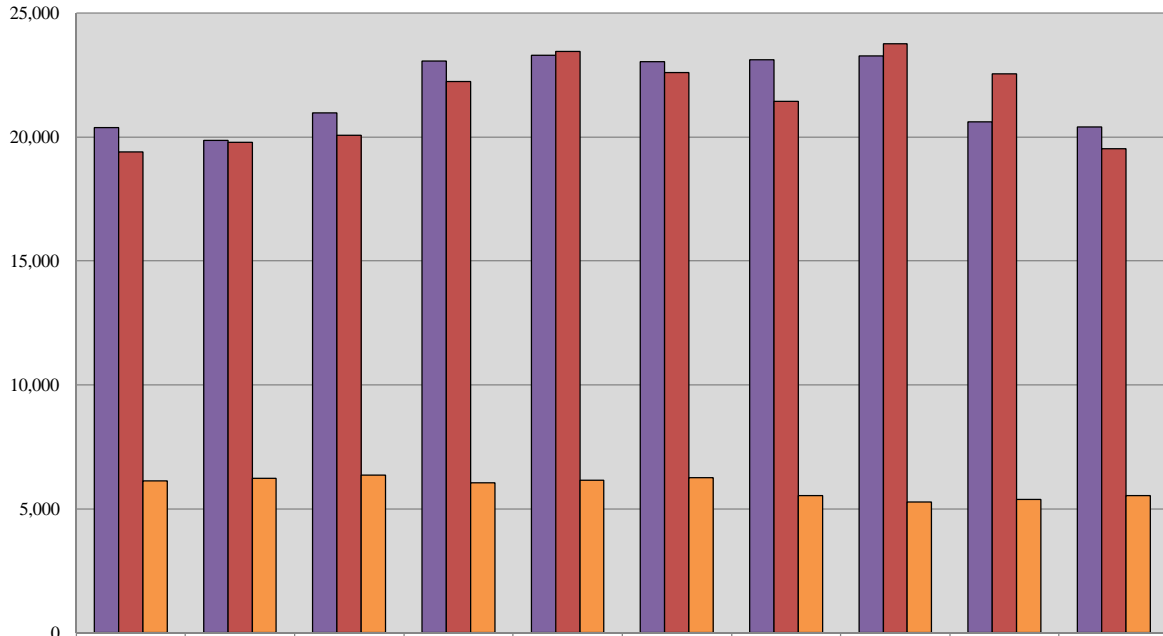
SUPERIOR COURT

Caseload Comparison - Fiscal Years 2012 - 2013 - Total Case Filings				
	2012	2013	Change	% Change
New Castle County	13,230	13,148	-82	-0.6%
Kent County	3,295	3,138	-157	-5.0%
Sussex County	4,091	4,111	20	0.5%
State	20,616	20,397	-219	-1.1%

Caseload Comparison - Fiscal Years 2012 - 2013 - Total Case Dispositions				
	2012	2013	Change	% Change
New Castle County	14,480	12,542	-1,938	-15.5%
Kent County	3,843	3,000	-843	-28.1%
Sussex County	4,221	3,985	-236	-5.9%
State	22,544	19,527	-3,017	-15.5%

Source: Court Administrator, Prothonotary's Offices, and Case Scheduling Office, Superior Court; Administrative Office of the Courts.

Superior Court Total 10-Year Caseload Trend



■ Filings	20,387	19,851	20,977	23,075	23,292	23,035	23,124	23,265	20,616	20,397
■ Dispositions	19,398	19,781	20,077	22,231	23,450	22,602	21,435	23,752	22,544	19,527
■ VOP Filings	6,119	6,232	6,349	6,055	6,151	6,255	5,523	5,271	5,384	5,520

Fiscal Year



FAMILY COURT
State of Delaware

2013 Annual Report Statistical Information

FAMILY COURT

Caseload Comparison - Fiscal Years 2012-2013 - Adult Criminal Case Filings				
	2012	2013	Change	% Change
New Castle County	2,937	2,863	-74	-2.5%
Kent County	849	749	-100	-11.8%
Sussex County	814	719	-95	-11.7%
State	4,600	4,331	-269	-5.8%

Caseload Comparison - Fiscal Years 2012-2013 - Adult Criminal Case Dispositions				
	2012	2013	Change	% Change
New Castle County	2,809	2,812	3	0.1%
Kent County	780	759	-21	-2.7%
Sussex County	783	751	-32	-4.1%
State	4,372	4,322	-50	-1.1%

Source: Court Administrator, Family Court; Administrative Office of the Courts.

FAMILY COURT

Caseload Comparison - Fiscal Years 2012-2013 - Civil Case Filings				
	2012	2013	Change	% Change
New Castle County	21,375	21,406	31	0.1%
Kent County	8,638	8,803	165	1.9%
Sussex County	10,536	10,302	-234	-2.2%
State	40,549	40,511	-38	-0.1%

Caseload Comparison - Fiscal Years 2012-2013 - Civil Case Dispositions				
	2012	2013	Change	% Change
New Castle County	21,451	20,663	-788	-3.7%
Kent County	8,909	8,664	-245	-2.8%
Sussex County	10,409	10,522	113	1.1%
State	40,769	39,849	-920	-2.3%

Source: Court Administrator, Family Court; Administrative Office of the Courts.

FAMILY COURT

Caseload Breakdown - Fiscal Year 2013 - Civil Case Filings								
	Divorces and Annulments		RTSC/ Other Civil Contempts		New Non-Support		Support Arrearages	
New Castle County	1,956	9.1%	636	3.0%	4,491	21.0%	2,219	10.4%
Kent County	858	9.7%	194	2.2%	1,749	19.9%	1,303	14.8%
Sussex County	836	8.1%	136	1.3%	2,127	20.6%	2,210	21.5%
State	3,650	9.0%	966	2.4%	8,367	20.7%	5,732	14.1%
	Support Modifications		Custody		Visitation		Protection from Abuse	
New Castle County	1,855	8.7%	2,265	10.6%	411	1.9%	2,246	10.5%
Kent County	619	7.0%	834	9.5%	151	1.7%	980	11.1%
Sussex County	710	6.9%	827	8.0%	160	1.6%	738	7.2%
State	3,184	7.9%	3,926	9.7%	722	1.8%	3,964	9.8%
	Adoptions		Termination of Parental Rights		Remaining Petition Types		Total	
New Castle County	128	0.6%	116	0.5%	5,083	23.7%	21,406	100%
Kent County	32	0.4%	31	0.4%	2,052	23.3%	8,803	100%
Sussex County	24	0.2%	37	0.4%	2,497	24.2%	10,302	100%
State	184	0.5%	184	0.5%	9,632	23.8%	40,511	100%

Caseload Breakdown - Fiscal Year 2013 - Civil Case Dispositions								
	Divorces and Annulments		RTSC/ Other Civil Contempts		New Non-Support		Support Arrearages	
New Castle County	2,053	9.9%	663	3.2%	4,062	19.7%	2,052	9.9%
Kent County	846	9.8%	180	2.1%	1,697	19.6%	1,313	15.2%
Sussex County	909	8.6%	149	1.4%	2,100	20.0%	2,378	22.6%
State	3,808	9.6%	992	2.5%	7,859	19.7%	5,743	14.4%
	Support Modifications		Custody		Visitation		Protection from Abuse	
New Castle County	1,725	8.3%	2,236	10.8%	440	2.1%	2,201	10.7%
Kent County	626	7.2%	793	9.2%	149	1.7%	841	9.7%
Sussex County	701	6.7%	853	8.1%	157	1.5%	741	7.0%
State	3,052	7.7%	3,882	9.7%	746	1.9%	3,783	9.5%
	Adoptions		Termination of Parental Rights		Remaining Petition Types		Total	
New Castle County	148	0.7%	109	0.5%	4,974	24.1%	20,663	100%
Kent County	34	0.4%	35	0.4%	2,150	24.8%	8,664	100%
Sussex County	15	0.1%	37	0.4%	2,482	23.6%	10,522	100%
State	197	0.5%	181	0.5%	9,606	24.1%	39,849	100%

RTSC = Rules to Show Cause.

Source: Court Administrator, Family Court; Administrative Office of the Courts.

FAMILY COURT

Caseload Comparison - Fiscal Years 2012-2013 - Juvenile Delinquency Case Filings				
	2012	2013	Change	% Change
New Castle County	3,705	3,109	-596	-16.1%
Kent County	1,363	1,220	-143	-10.5%
Sussex County	1,351	1,193	-158	-11.7%
State	6,419	5,522	-897	-14.0%

Caseload Comparison - Fiscal Years 2012-2013 - Juvenile Delinquency Case Dispositions				
	2012	2013	Change	% Change
New Castle County	4,059	3,362	-697	-17.2%
Kent County	1,649	1,431	-218	-13.2%
Sussex County	1,364	1,227	-137	-10.0%
State	7,072	6,020	-1,052	-14.9%

Source: Court Administrator, Family Court; Administrative Office of the Courts.

FAMILY COURT

Caseload Breakdowns - Fiscal Year 2013 - Juvenile Delinquency Case Filings						
	Felony		Misdemeanor		Traffic	
New Castle County	528	17.0%	2,076	66.8%	173	5.6%
Kent County	175	14.3%	858	70.3%	72	5.9%
Sussex County	192	16.1%	769	64.5%	127	10.6%
State	895	16.2%	3,703	67.1%	372	6.7%
	VOP				Total	
New Castle County	332	10.7%			3,109	100%
Kent County	115	9.4%			1,220	100%
Sussex County	105	8.8%			1,193	100%
State	552	10.0%			5,522	100%

Caseload Breakdowns - Fiscal Year 2013 - Juvenile Delinquency Case Dispositions						
	Felony		Misdemeanor		Traffic	
New Castle County	553	16.4%	2,260	67.2%	206	6.1%
Kent County	177	12.4%	1,065	74.4%	70	4.9%
Sussex County	171	13.9%	836	68.1%	121	9.9%
State	901	15.0%	4,161	69.1%	397	6.6%
	VOP				Total	
New Castle County	343	10.2%			3362	100%
Kent County	119	8.3%			1431	100%
Sussex County	99	8.1%			1227	100%
State	561	9.3%			6020	100%

VOP = Violations of Probation.

Source: Court Administrator, Family Court; Administrative Office of the Courts.

FAMILY COURT

Caseload Comparison - Fiscal Years 2012-2013 - Mediation Hearings Scheduled				
	2012	2013	Change	% Change
New Castle County	5,167	6,141	974	18.9%
Kent County	3,233	2,973	-260	-8.0%
Sussex County	4,026	4,686	660	16.4%
State	12,426	13,800	1,374	11.1%

Caseload Comparison - Fiscal Years 2012-2013 - Mediation Dispositions				
	2012	2013	Change	% Change
New Castle County	3,419	4,227	808	23.6%
Kent County	2,151	2,035	-116	-5.4%
Sussex County	2,788	3,001	213	7.6%
State	8,358	9,263	905	10.8%

Mediation Explanatory Notes Fiscal Year 2013

1. Mediation is the process prior to adjudication in which a trained mediator attempts to assist the parties in reaching an agreement. If the parties are unable to reach an agreement, the matter is scheduled to be heard before a commissioner or judge.
2. Custody, support, visitation, guardianship, imperiling family relations, and rule to show cause filings are scheduled for mediation.

Note: Mediation data was reported as Arbitration data in some previous fiscal years.

Source: Court Administrator, Family Court; Administrative Office of the Courts.

FAMILY COURT

Caseload Comparison - Fiscal Years 2012-2013 - Total Case Filings				
	2012	2013	Change	% Change
New Castle County	28,017	27,378	-639	-2.3%
Kent County	10,850	10,772	-78	-0.7%
Sussex County	12,701	12,214	-487	-3.8%
State	51,568	50,364	-1,204	-2.3%

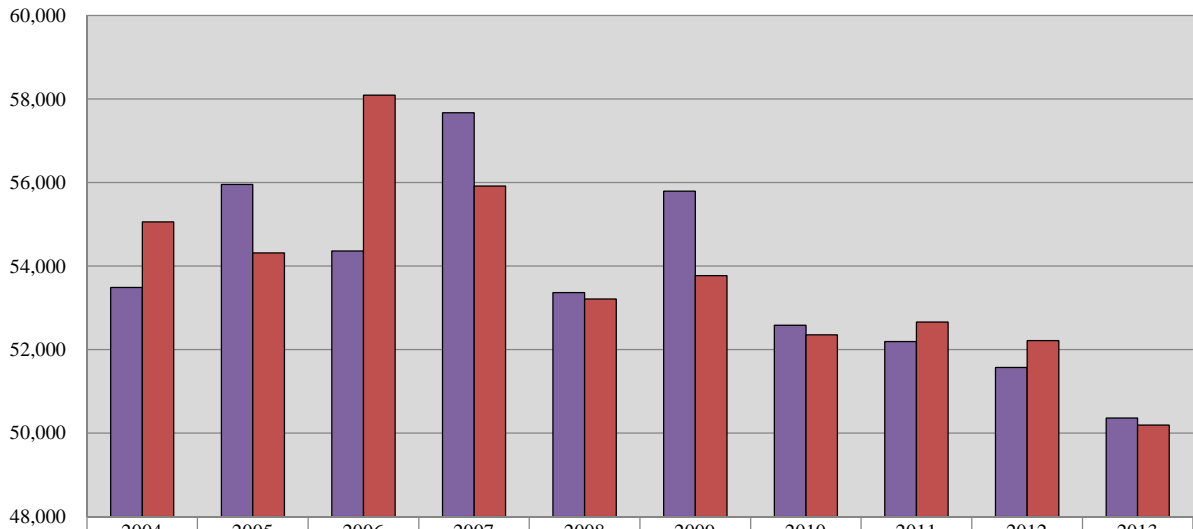
Caseload Comparison - Fiscal Years 2012-2013 - Total Case Dispositions				
	2012	2013	Change	% Change
New Castle County	28,319	26,837	-1,482	-5.2%
Kent County	11,338	10,854	-484	-4.3%
Sussex County	12,556	12,500	-56	-0.4%
State	52,213	50,191	-2,022	-3.9%

Total Caseload Explanatory Notes - Fiscal Year 2013

1. A civil filing is defined as one petition or one single civil incident filed with Family Court. In a divorce matter, although the petition may contain multiple ancillary matters to the divorce, it is counted as one filing.
2. A criminal or delinquency filing is defined as one incident filed against one individual or defendant. A single criminal or juvenile delinquency filing may be comprised of a single charge, or of multiple charges relating to a single incident.

Source: Court Administrator, Family Court; Administrative Office of the Courts.

Family Court 10-Year Total Caseload Trend



	2004	2005	2006	2007	2008	2009	2010	2011	2012	2013
■ Filings	53,490	55,959	54,361	57,672	53,366	55,797	52,580	52,189	51,568	50,364
■ Dispositions	55,056	54,313	58,094	55,920	53,211	53,772	52,353	52,661	52,213	50,191

Fiscal Year

Note: The number of filings for Fiscal Year 2009 was amended.



COURT OF COMMON PLEAS
State of Delaware

2013 Annual Report Statistical Information

COURT OF COMMON PLEAS

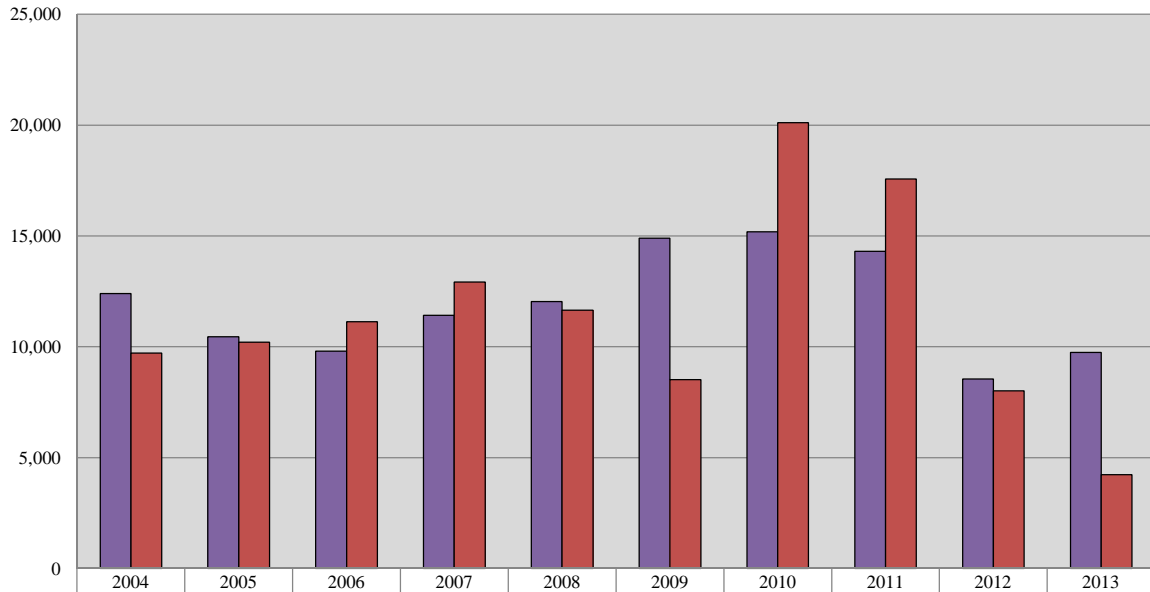
Caseload Summary - Fiscal Years 2012-2013 - Civil Case Filings				
	2012	2013	Change	% Change
New Castle County	5,218	6,040	822	15.8%
Kent County	1,548	1,894	346	22.4%
Sussex County	1,786	1,814	28	1.6%
State	8,552	9,748	1,196	14.0%

Caseload Summary - Fiscal Years 2012-2013 - Civil Case Dispositions				
	2012	2013	Change	% Change
New Castle County	4,340	2,432	-1,908	-44.0%
Kent County	1,560	795	-765	-49.0%
Sussex County	2,113	1,002	-1,111	-52.6%
State	8,013	4,229	-3,784	-47.2%

Caseload Breakdowns - Fiscal Year 2013 - Civil Case Filings						
	Complaints		Civil Judgments, Name Changes & Appeals		Total	
New Castle County	3,474	57.5%	2,566	42.5%	6,040	100%
Kent County	1,077	56.9%	817	43.1%	1,894	100%
Sussex County	1,048	57.8%	766	42.2%	1,814	100%
State	5,599	57.4%	4,149	42.6%	9,748	100%

Source: Court Administrator, Court of Common Pleas; Administrative Office of the Courts.

Court of Common Pleas 10-Year Civil Caseload Trend



	2004	2005	2006	2007	2008	2009	2010	2011	2012	2013
■ Filings	12,396	10,455	9,805	11,420	12,045	14,894	15,191	14,314	8,552	9,748
■ Dispositions	9,718	10,206	11,127	12,921	11,657	8,526	20,111	17,573	8,013	4,229

Fiscal Year

COURT OF COMMON PLEAS

Caseload Summary - Fiscal Years 2012-2013 - Criminal Misdemeanor Case Filings*

	2012	2013	Change	% Change
New Castle County	58,171	55,015	-3,156	-5.4%
Kent County	20,709	29,307	8,598	41.5%
Sussex County	22,404	27,682	5,278	23.6%
State	101,284	112,004	10,720	10.6%

Caseload Summary - Fiscal Years 2012-2013 - Criminal Misdemeanor Case Dispositions

	2012	2013	Change	% Change
New Castle County	62,035	44,030	-18,005	-29.0%
Kent County	19,354	23,534	4,180	21.6%
Sussex County	22,413	23,309	896	4.0%
State	103,802	90,873	-12,929	-12.5%

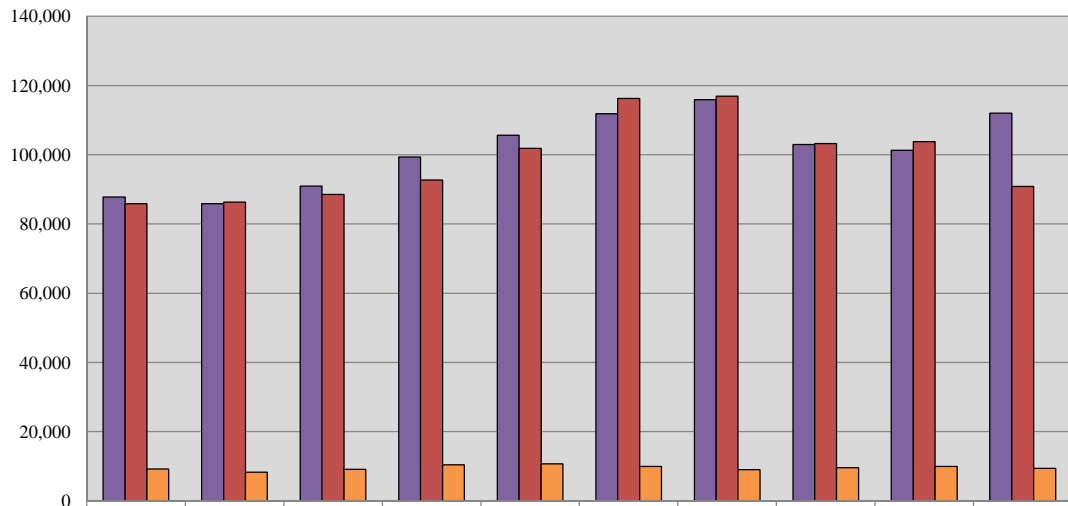
Caseload Summary - Fiscal Years 2012-2013 - Criminal Preliminary Hearing Case Filings

	2012	2013	Change	% Change
New Castle County	5,203	4,954	-249	-4.8%
Kent County	2,239	2,213	-26	-1.2%
Sussex County	2,475	2,231	-244	-9.9%
State	9,917	9,398	-519	-5.2%

*Includes Contempt of Court cases.

Source: Court Administrator, Court of Common Pleas; Administrative Office of the Courts.

Court of Common Pleas 10-Year Criminal Caseload Trend



	2004	2005	2006	2007	2008	2009	2010	2011	2012	2013
■ Misdemeanor Filings	87,836	85,867	90,964	99,345	105,607	111,797	115,882	102,939	101,284	112,004
■ Misdemeanor Dispositions	85,893	86,319	88,577	92,691	101,823	116,278	116,926	103,209	103,802	90,873
■ Preliminary Hearings	9,189	8,329	9,165	10,413	10,720	9,940	9,066	9,590	9,917	9,398

Fiscal Year

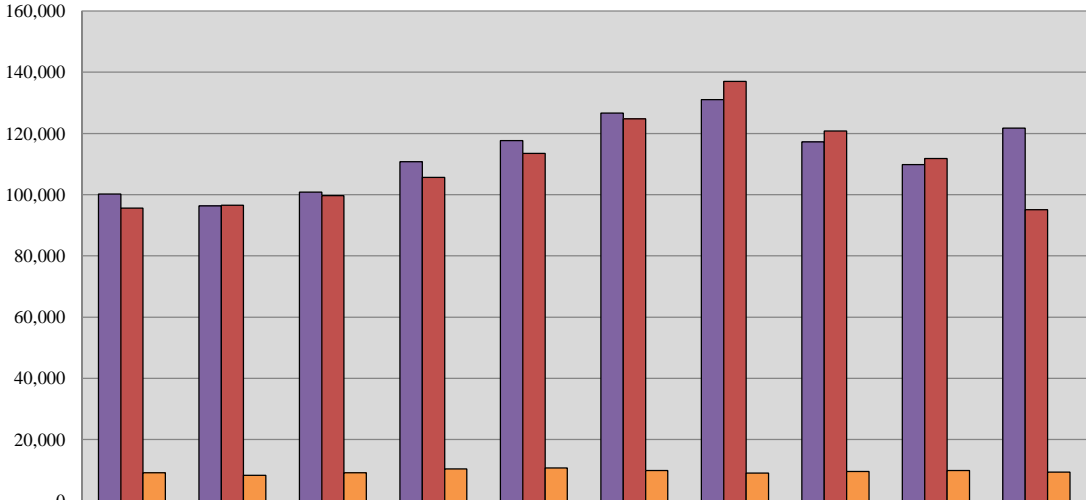
COURT OF COMMON PLEAS

Caseload Summary - Fiscal Years 2012-2013 - Total Criminal Misdemeanor and Civil Case Filings				
	2012	2013	Change	% Change
New Castle County	63,389	61,055	-2,334	-3.7%
Kent County	22,257	31,201	8,944	40.2%
Sussex County	24,190	29,496	5,306	21.9%
State	109,836	121,752	11,916	10.8%

Caseload Summary - Fiscal Years 2012-2013 - Total Criminal Misdemeanor and Civil Case Dispositions				
	2012	2013	Change	% Change
New Castle County	66,375	46,462	-19,913	-30.0%
Kent County	20,914	24,329	3,415	16.3%
Sussex County	24,526	24,311	-215	-0.9%
State	111,815	95,102	-16,713	-14.9%

Source: Court Administrator, Court of Common Pleas; Administrative Office of the Courts.

Court of Common Pleas 10-Year Total Caseload Trend (Civil & Criminal)



	2004	2005	2006	2007	2008	2009	2010	2011	2012	2013
■ Filings	100,232	96,322	100,814	110,765	117,652	126,691	131,073	117,253	109,836	121,752
■ Dispositions	95,611	96,525	99,704	105,612	113,480	124,804	137,037	120,782	111,815	95,102
■ Preliminary Hearings	9,189	8,329	9,165	10,413	10,720	9,940	9,066	9,590	9,917	9,398

Fiscal Year



JUSTICE OF THE PEACE COURT
State of Delaware

2013 Annual Report Statistical Information

JUSTICE OF THE PEACE COURT

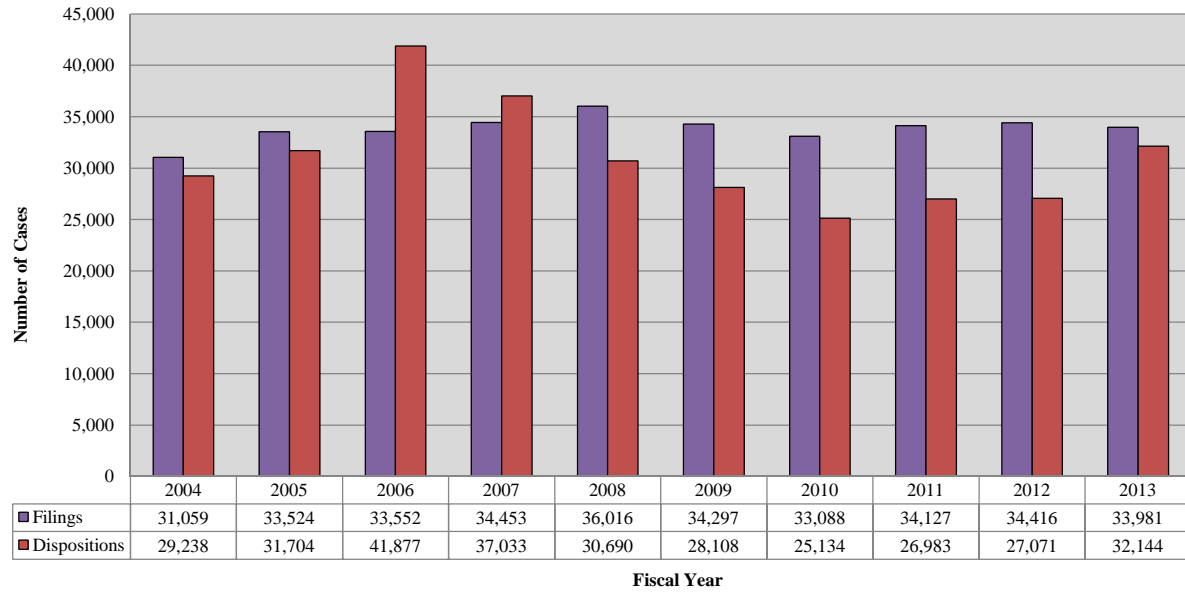
Caseload Summary - Fiscal Year 2013 - Civil Cases		
	Filings	Dispositions
New Castle County		
Court 9	2,170	1,667
Court 13	17,419	17,437
Kent County		
Court 16	7,569	6,467
Sussex County		
Court 17	6,823	6,573
State	33,981	32,144

Caseload Comparison - Fiscal Years 2012-2013 - Civil Case Filings				
	2012	2013	Change	% Change
New Castle County				
Court 9	2,011	2,170	159	7.9%
Court 13	18,142	17,419	-723	-4.0%
Kent County				
Court 16	7,119	7,569	450	6.3%
Sussex County				
Court 17	7,144	6,823	-321	-4.5%
State	34,416	33,981	-435	-1.3%

Caseload Comparison - Fiscal Years 2012-2013 - Civil Case Dispositions				
	2012	2013	Change	% Change
New Castle County				
Court 9	1,526	1,667	141	9.2%
Court 13	14,522	17,437	2,915	20.1%
Kent County				
Court 16	5,844	6,467	623	10.7%
Sussex County				
Court 17	5,179	6,573	1,394	26.9%
State	27,071	32,144	5,073	18.7%

Source: Chief Magistrate's Office, Justice of the Peace Court; Administrative Office of the Courts.

JP Court 10-Year Civil Caseload Trend

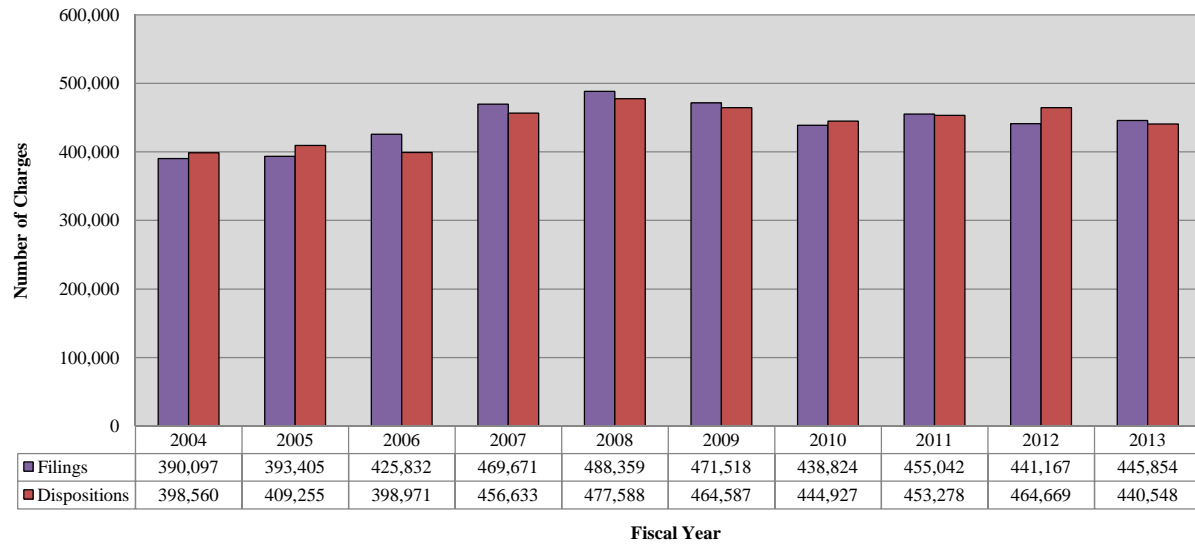


Note: The number of dispositions for Fiscal Year 2005 was amended.

Caseload Breakdowns - Fiscal Year 2013 - Civil Case Filings							
	Complaints		Landlord/Tenant		Total		
New Castle County							
Court 9	1,634	75.3%	536	24.7%	2,170	100%	
Court 13	5,442	31.2%	11,977	68.8%	17,419	100%	
Kent County							
Court 16	3,864	51.1%	3,705	48.9%	7,569	100%	
Sussex County							
Court 17	3,959	58.0%	2,864	42.0%	6,823	100%	
State	14,899	43.8%	19,082	56.2%	33,981	100%	

Source: Chief Magistrate's Office, Justice of the Peace Court; Administrative Office of the Courts.

JP Court 10-Year Criminal and Traffic Caseload Trend



Note: The number of dispositions for Fiscal Year 2004 was amended.

JUSTICE OF THE PEACE COURT

Caseload Breakdowns - Fiscal Year 2013 - Criminal and Traffic Filings (Defendants)											
	Title 7 - Fish/Game		Title 11 - Criminal		Title 21 - Traffic		Miscellaneous		Total		
New Castle County											
Court 9	283	6.2%	237	5.2%	3,740	82.3%	286	6.3%	4,546	100%	
Court 10	77	2.0%	172	4.5%	1,975	51.8%	1,589	41.7%	3,813	100%	
Court 11	108	0.3%	7,804	20.4%	27,665	72.3%	2,692	7.0%	38,269	100%	
Court 20	58	0.5%	3,797	29.7%	6,825	53.4%	2,095	16.4%	12,775	100%	
Kent County											
Court 6	43	0.8%	287	5.4%	4,816	90.8%	159	3.0%	5,305	100%	
Court 7	140	0.7%	4,666	23.9%	13,317	68.3%	1,367	7.0%	19,490	100%	
Court 8	1	0.0%	149	5.4%	2,541	91.6%	83	3.0%	2,774	100%	
Sussex County											
Court 1	68	2.3%	150	5.1%	2,367	80.9%	341	11.7%	2,926	100%	
Court 2	357	2.1%	8,954	53.5%	6,049	36.2%	1,371	8.2%	16,731	100%	
Court 3	456	4.0%	3,440	30.1%	6,334	55.3%	1,215	10.6%	11,445	100%	
Court 4	9	0.1%	579	6.4%	8,242	90.8%	249	2.7%	9,079	100%	
Court 14	1	0.0%	58	2.4%	2,311	95.4%	53	2.2%	2,423	100%	
State w/o VAC	1,601	1.2%	30,293	23.4%	86,182	66.5%	11,500	8.9%	129,576	100%	
VAC	696	0.5%	0	0%	140,810	99.3%	361	0.3%	141,867	100%	
State with VAC	2,297	0.8%	30,293	11.2%	226,992	83.6%	11,861	4.4%	271,443	100%	

VAC = Voluntary Assessment Center.

Source: Chief Magistrate's Office, Justice of the Peace Court; Administrative Office of the Courts.

JUSTICE OF THE PEACE COURT

Caseload Breakdowns - Fiscal Year 2013 - Criminal and Traffic Filings (Charges)										
	Title 7 - Fish/Game		Title 11 - Criminal		Title 21 - Traffic		Miscellaneous		Total	
New Castle County										
Court 9	406	4.9%	380	4.6%	7,112	85.4%	433	5.2%	8,331	100%
Court 10	85	1.6%	224	4.2%	3,334	61.9%	1,741	32.3%	5,384	100%
Court 11	145	0.2%	16,925	19.5%	63,737	73.6%	5,783	6.7%	86,590	100%
Court 20	71	0.3%	7,729	28.3%	15,661	57.4%	3,825	14.0%	27,286	100%
Kent County										
Court 6	61	0.6%	410	3.8%	10,176	93.2%	266	2.4%	10,913	100%
Court 7	214	0.5%	11,704	28.2%	26,665	64.2%	2,942	7.1%	41,525	100%
Court 8	1	0.0%	250	4.0%	5,853	94.0%	124	2.0%	6,228	100%
Sussex County										
Court 1	121	2.2%	197	3.6%	4,775	86.9%	403	7.3%	5,496	100%
Court 2	416	1.0%	24,773	57.1%	13,815	31.8%	4,377	10.1%	43,381	100%
Court 3	815	2.4%	15,125	44.2%	14,953	43.7%	3,295	9.6%	34,188	100%
Court 4	14	0.1%	1,036	5.6%	16,990	91.6%	502	2.7%	18,542	100%
Court 14	2	0.0%	193	3.3%	5,558	95.2%	87	1.5%	5,840	100%
State w/o VAC	2,351	0.8%	78,946	26.9%	188,629	64.2%	23,778	8.1%	293,704	100%
VAC	716	0.5%	0	0%	151,070	99.3%	364	0.2%	152,150	100%
State with VAC	3,067	0.7%	78,946	17.7%	339,699	76.2%	24,142	5.4%	445,854	100%

VAC = Voluntary Assessment Center.

Source: Chief Magistrate's Office, Justice of the Peace Court; Administrative Office of the Courts.

JUSTICE OF THE PEACE COURT

Caseload Comparison - Fiscal Years 2012-2013 - Criminal and Traffic Filings (Defendants)				
	2012	2013	Change	% Change
New Castle County				
Court 9	4,600	4,546	-54	-1.2%
Court 10	3,889	3,813	-76	-2.0%
Court 11	36,415	38,269	1,854	5.1%
Court 20	16,299	12,775	-3,524	-21.6%
Kent County				
Court 6	5,137	5,305	168	3.3%
Court 7	18,625	19,490	865	4.6%
Court 8	2,709	2,774	65	2.4%
Sussex County				
Court 1	2,792	2,926	134	4.8%
Court 2	17,820	16,731	-1,089	-6.1%
Court 3	11,110	11,445	335	3.0%
Court 4	8,341	9,079	738	8.8%
Court 5	2,330	2,423	93	4.0%
State Without VAC	130,067	129,576	-491	-0.4%
VAC	138,827	141,867	3,040	2.2%
State with VAC	268,894	271,443	2,549	0.9%

VAC = Voluntary Assessment Center.

Source: Chief Magistrate's Office, Justice of the Peace Court; Administrative Office of the Courts.

JUSTICE OF THE PEACE COURT

Caseload Comparison - Fiscal Years 2012-2013 - Criminal and Traffic Filings (Charges)				
	2012	2013	Change	% Change
New Castle County				
Court 9	8,529	8,331	-198	-2.3%
Court 10	5,398	5,384	-14	-0.3%
Court 11	83,294	86,590	3,296	4.0%
Court 20	32,741	27,286	-5,455	-16.7%
Kent County				
Court 6	10,028	10,913	885	8.8%
Court 7	39,167	41,525	2,358	6.0%
Court 8	6,133	6,228	95	1.5%
Sussex County				
Court 1	5,464	5,496	32	0.6%
Court 2	46,157	43,381	-2,776	-6.0%
Court 3	30,959	34,188	3,229	10.4%
Court 4	17,601	18,542	941	5.3%
Court 5	5,888	5,840	-48	-0.8%
State Without VAC	291,359	293,704	2,345	0.8%
VAC	149,808	152,150	2,342	1.6%
State with VAC	441,167	445,854	4,687	1.1%

VAC = Voluntary Assessment Center.

Source: Chief Magistrate's Office, Justice of the Peace Court; Administrative Office of the Courts.

JUSTICE OF THE PEACE COURT

Court Rankings - Fiscal Years 2012-2013 - Total Cases Filed* (Charges)				
2012 Rank w/o VAC	2013 Rank w/o VAC	2013 Total Filings		2013 % of Total w/o VAC
1	1	Court 11	86,590	26.4%
2	2	Court 2	43,381	13.2%
3	3	Court 7	41,525	12.7%
5	4	Court 3	34,188	10.4%
4	5	Court 20	27,286	8.3%
7	6	Court 4	18,542	5.7%
6	7	Court 13	17,419	5.3%
9	8	Court 6	10,913	3.3%
8	9	Court 9	10,501	3.2%
11	10	Court 16	7,569	2.3%
10	11	Court 17	6,823	2.1%
12	12	Court 8	6,228	1.9%
13	13	Court 14	5,840	1.8%
14	14	Court 1	5,496	1.7%
15	15	Court 10	5,384	1.6%
2013 State w/o VAC			327,685	100%
2013 VAC			152,150	
2013 State w/ VAC			479,835	

*Includes civil, criminal, and traffic filings.

VAC = Voluntary Assessment Center.

Source: Chief Magistrate's Office, Justice of the Peace Court; Administrative Office of the Courts.

JUSTICE OF THE PEACE COURT

Court Rankings - Fiscal Years 2012-2013 - Total Case Filings (Defendants)				
2012 Rank w/o VAC	2013 Rank w/o VAC	2013 Total Filings		2013 % of Total w/o VAC
1	1	Court 11	38,269	23.4%
2	2	Court 7	19,490	11.9%
3	3	Court 13	17,419	10.7%
5	4	Court 2	16,731	10.2%
4	5	Court 20	12,775	7.8%
6	6	Court 3	11,445	7.0%
7	7	Court 4	9,079	5.6%
10	8	Court 16	7,569	4.6%
8	9	Court 17	6,823	4.2%
9	10	Court 9	6,716	4.1%
11	11	Court 6	5,305	3.2%
12	12	Court 10	3,813	2.3%
13	13	Court 1	2,926	1.8%
14	14	Court 8	2,774	1.7%
15	15	Court 14	2,423	1.5%
2013 State w/o VAC			163,557	100%
2013 VAC			141,867	
2013 State w/ VAC			305,424	

VAC = Voluntary Assessment Center.

Source: Chief Magistrate's Office, Justice of the Peace Court; Administrative Office of the Courts.

JUSTICE OF THE PEACE COURT

Caseload Comparison - Fiscal Years 2012-2013 - Total Cases Filed (Charges)				
	2012	2013	Change	% Change
Criminal & Traffic	441,167	445,854	4,687	1.1%
Civil	34,416	33,981	-435	-1.3%
Total	475,583	479,835	4,252	0.9%

Caseload Comparison - Fiscal Years 2012-2013 - Total Cases Disposed (Charges)				
	2012	2013	Change	% Change
Criminal & Traffic	464,669	440,548	-24,121	-5.2%
Civil	27,071	32,144	5,073	18.7%
Total	491,740	472,692	-19,048	-3.9%

Source: Chief Magistrate's Office, Justice of the Peace Court; Administrative Office of the Courts.

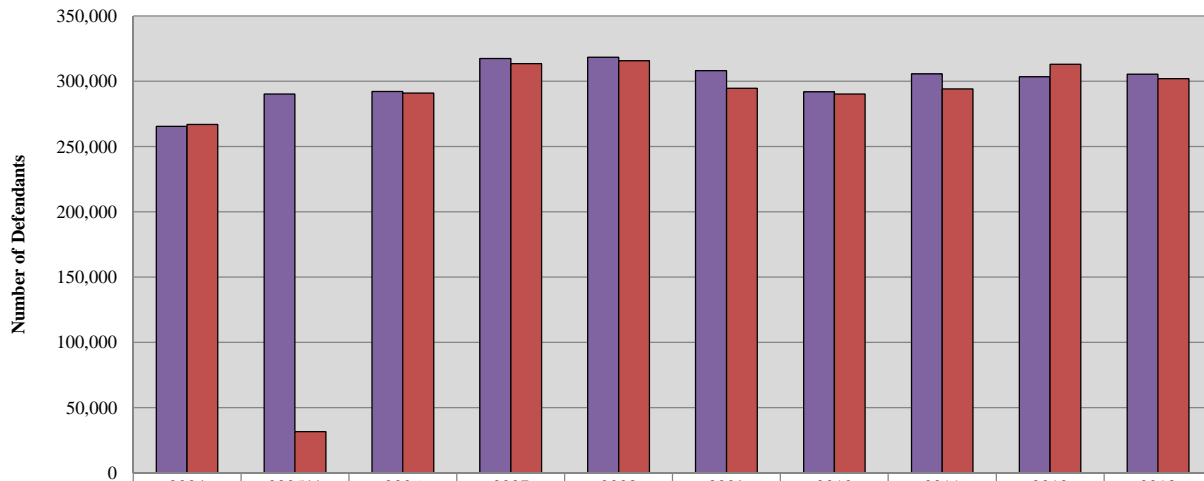
JUSTICE OF THE PEACE COURT

Caseload Comparison - Fiscal Years 2012-2013 - Total Case Filings (Defendants)				
	2012	2013	Change	% Change
Criminal & Traffic	268,894	271,443	2,549	0.9%
Civil	34,416	33,981	-435	-1.3%
Total	303,310	305,424	2,114	0.7%

Caseload Comparison - Fiscal Years 2012-2013 - Total Cases Dispositions (Defendants)				
	2012	2013	Change	% Change
Criminal & Traffic	285,905	269,688	-16,217	-5.7%
Civil	27,071	32,144	5,073	18.7%
Total	312,976	301,832	-11,144	-3.6%

Source: Chief Magistrate's Office, Justice of the Peace Court; Administrative Office of the Courts.

**JP Court 10-Year Total Caseload Trend*
(Civil, Criminal & Traffic)**



	2004	2005**	2006	2007	2008	2009	2010	2011	2012	2013
■ Filings	265,456	290,095	292,095	317,436	318,293	307,925	291,838	305,499	303,310	305,424
■ Dispositions	266,890	31,704	290,772	313,409	315,663	294,655	290,215	294,125	312,976	301,832

Fiscal Year

*Criminal filings and disposition information is by defendant.

**Criminal and traffic disposition information for 2005 is not available.



ALDERMAN'S COURTS
State of Delaware

2013 Annual Report Statistical Information

ALDERMAN'S COURTS*

Caseload Comparison - Fiscal Years 2012-2013 - Total Filings				
	2012	2013	Change	% Change
New Castle County				
Newark	16,157	17,496	1,339	8.3%
Newport	6,074	6,049	-25	-0.4%
Sussex County				
Bethany Beach	2,496	2,419	-77	-3.1%
Dewey Beach	1,160	451	-709	-61.1%
Laurel	1,802	2,845	1,043	57.9%
Rehoboth Beach	1,753	1,937	184	10.5%
State	29,442	31,197	1,755	6.0%

Caseload Comparison - Fiscal Years 2012-2013 - Total Dispositions				
	2012	2013	Change	% Change
New Castle County				
Newark	17,956	18,372	416	2.3%
Newport	6,074	6,049	-25	-0.4%
Sussex County				
Bethany Beach	2,496	2,419	-77	-3.1%
Dewey Beach	1,737	965	-772	-44.4%
Laurel	1,808	2,386	578	32.0%
Rehoboth Beach	1,561	1,874	313	20.1%
State	31,632	32,065	433	1.4%

The unit of count for criminal and traffic cases is the charge. For example, a defendant with three charges disposed of is counted as three dispositions.

*Alderman's Courts are not part of the Delaware court system. They are independent entities within their respective Municipalities. However, cases may be transferred or appealed to a State court.

Source: Alderman's Courts; Administrative Office of the Courts.