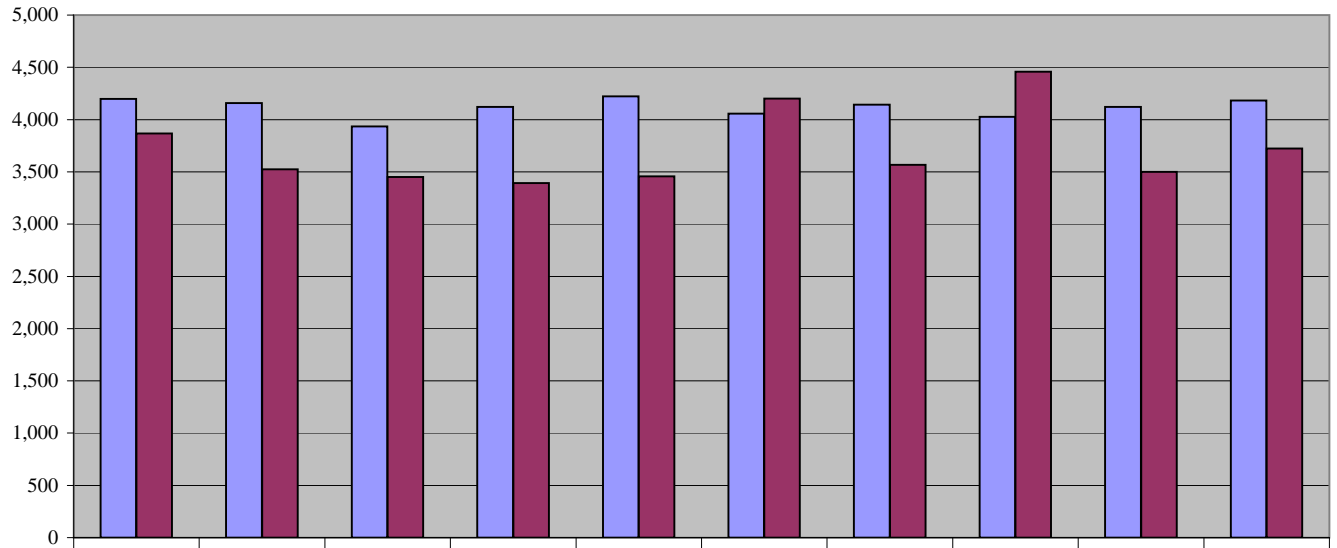


Court of Chancery 10-Year Total Caseload Trend (Civil, Miscellaneous, & Estates)



| | | | | | | | | | | |
|--------------|-------|-------|-------|-------|-------|-------|-------|-------|-------|-------|
| | 2001 | 2002 | 2003 | 2004 | 2005 | 2006 | 2007 | 2008 | 2009 | 2010 |
| Filings | 4,197 | 4,159 | 3,935 | 4,122 | 4,221 | 4,057 | 4,142 | 4,027 | 4,122 | 4,184 |
| Dispositions | 3,868 | 3,525 | 3,452 | 3,391 | 3,457 | 4,200 | 3,567 | 4,457 | 3,500 | 3,724 |

Fiscal Year