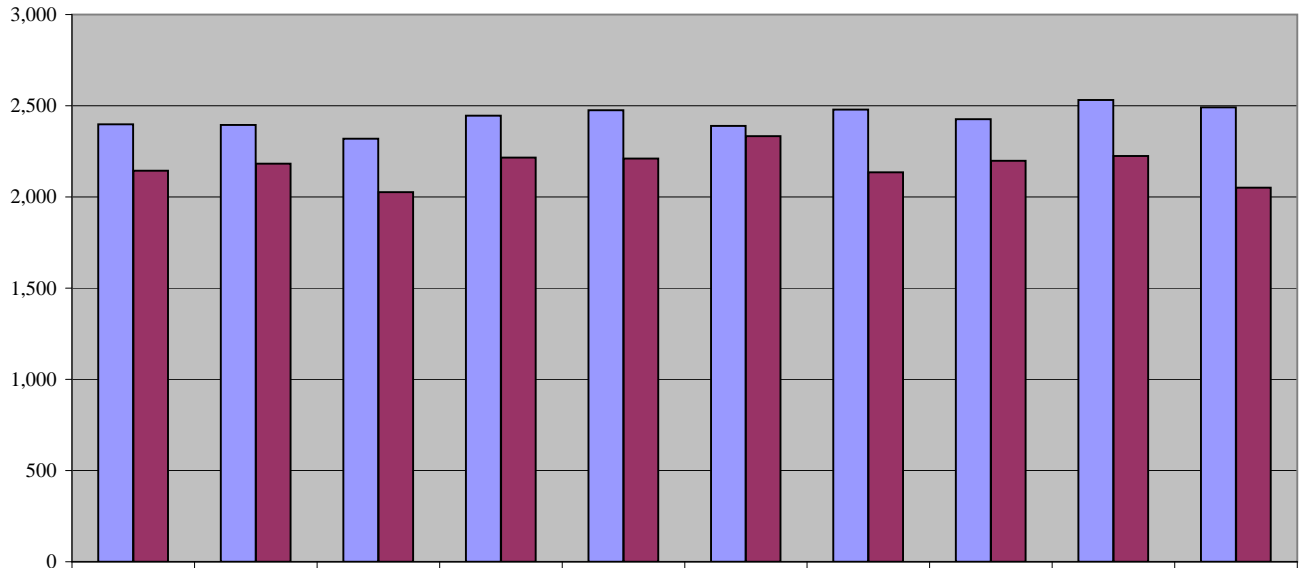


Court of Chancery 10-Year Estates Caseload Trend



	2001	2002	2003	2004	2005	2006	2007	2008	2009	2010
Filings	2,399	2,394	2,319	2,445	2,476	2,390	2,479	2,427	2,531	2,492
Dispositions	2,143	2,183	2,027	2,215	2,210	2,333	2,135	2,199	2,225	2,051

Fiscal Year