



COURT OF COMMON PLEAS
State of Delaware

2016 Annual Report Statistical Information

COURT OF COMMON PLEAS

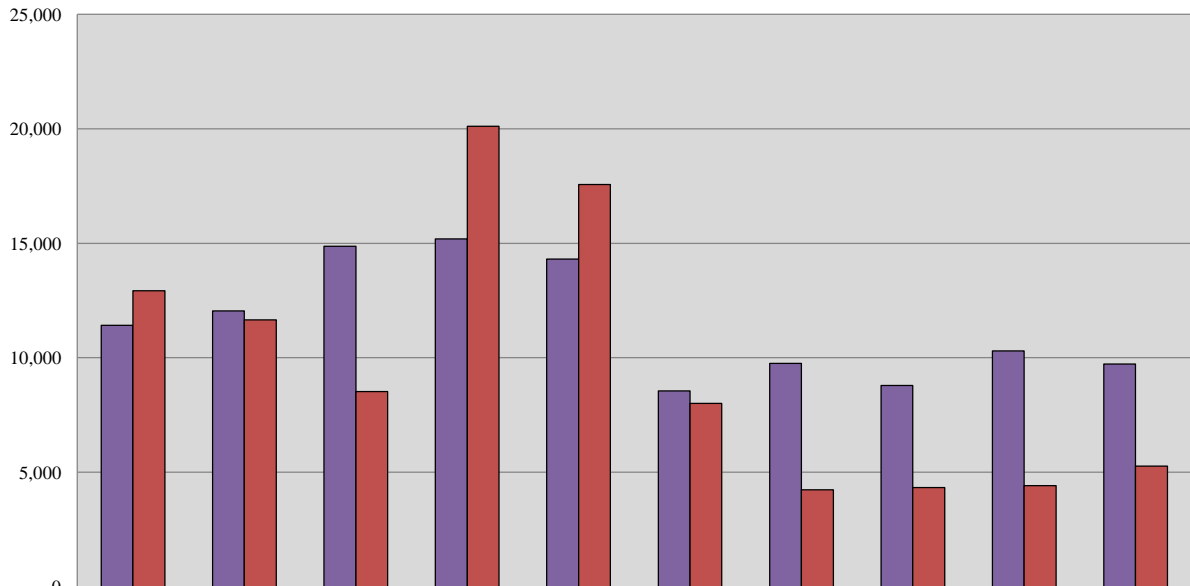
Caseload Summary - Fiscal Years 2015-2016 - Civil Case Filings				
	2015	2016	Change	% Change
New Castle County	6,169	5,727	-442	-7.2%
Kent County	2,014	1,887	-127	-6.3%
Sussex County	2,112	2,108	-4	-0.2%
State	10,295	9,722	-573	-5.6%

Caseload Summary - Fiscal Years 2015-2016 - Civil Case Dispositions				
	2015	2016	Change	% Change
New Castle County	2,602	2,952	350	13.5%
Kent County	748	1,014	266	35.6%
Sussex County	1,065	1,300	235	22.1%
State	4,415	5,266	851	19.3%

Caseload Breakdowns - Fiscal Year 2016 - Civil Case Filings						
	Complaints		Civil Judgments, Name Changes & Appeals		Total	
New Castle County	3,516	64.6%	2,211	35.4%	5,727	100%
Kent County	1,096	59.4%	791	40.6%	1,887	100%
Sussex County	1,252	62.7%	856	37.3%	2,108	100%
State	5,864	60.3%	3,858	39.7%	9,722	100%

Source: Court Administrator, Court of Common Pleas; Administrative Office of the Courts.

Court of Common Pleas 10-Year Civil Caseload Trend



■ Filings	11,420	12,045	14,874	15,191	14,314	8,552	9,748	8,793	10,295	9,722
■ Dispositions	12,921	11,657	8,526	20,111	17,573	8,013	4,229	4,327	4,415	5,266

Fiscal Year

COURT OF COMMON PLEAS

Caseload Summary - Fiscal Years 2015-2016 - Criminal Misdemeanor Case Filings*

	2015	2016	Change	% Change
New Castle County	45,885	48,014	2,129	4.6%
Kent County	27,824	25,984	-1,840	-6.6%
Sussex County	29,467	29,827	360	1.2%
State	103,176	103,825	649	0.6%

Caseload Summary - Fiscal Years 2015-2016 - Criminal Misdemeanor Case Dispositions

	2015	2016	Change	% Change
New Castle County	40,192	37,970	-2,222	-5.5%
Kent County	23,084	18,244	-4,840	-21.0%
Sussex County	24,090	21,459	-2,631	-10.9%
State	87,366	77,673	-9,693	-11.1%

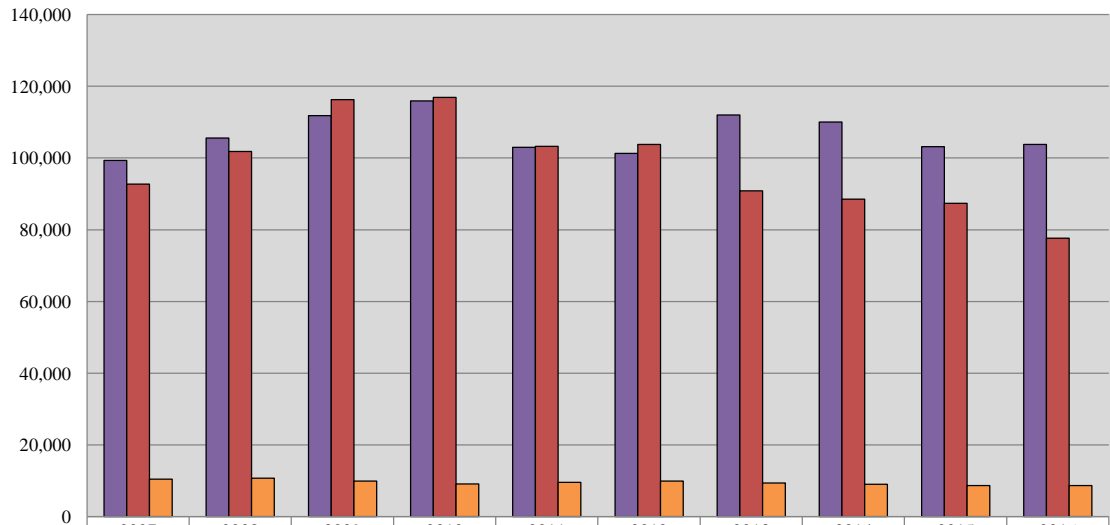
Caseload Summary - Fiscal Years 2015-2016 - Criminal Preliminary Hearing Case Filings

	2015	2016	Change	% Change
New Castle County	4,389	4,404	15	0.3%
Kent County	1,936	1,976	40	2.1%
Sussex County	2,296	2,309	13	0.6%
State	8,621	8,689	68	0.8%

*Includes Contempt of Court cases.

Source: Court Administrator, Court of Common Pleas; Administrative Office of the Courts.

Court of Common Pleas 10-Year Criminal Caseload Trend



■ Misdemeanor Filings	99,345	105,607	111,797	115,882	102,939	101,284	112,004	110,071	103,176	103,825
■ Misdemeanor Dispositions	92,691	101,823	116,278	116,926	103,209	103,802	90,873	88,507	87,366	77,673
■ Preliminary Hearings	10,413	10,720	9,940	9,066	9,590	9,917	9,398	9,011	8,621	8,689

Fiscal Year

COURT OF COMMON PLEAS

Caseload Summary - Fiscal Years 2015-2016 - Total Criminal Misdemeanor and Civil Case Filings				
	2015	2016	Change	% Change
New Castle County	52,054	53,741	1,687	3.2%
Kent County	29,838	27,871	-1,967	-6.6%
Sussex County	31,579	31,935	356	1.1%
State	113,471	113,547	76	0.1%

Caseload Summary - Fiscal Years 2015-2016 - Total Criminal Misdemeanor and Civil Case Dispositions				
	2015	2016	Change	% Change
New Castle County	42,794	40,922	-1,872	-4.4%
Kent County	23,832	19,258	-4,574	-19.2%
Sussex County	25,155	22,759	-2,396	-9.5%
State	91,781	82,939	-8,842	-9.6%

Source: Court Administrator, Court of Common Pleas; Administrative Office of the Courts.

Court of Common Pleas 10-Year Total Caseload Trend (Civil & Criminal)

