



JUSTICE OF THE PEACE COURT
State of Delaware

2012 Annual Report Statistical Information

JUSTICE OF THE PEACE COURT

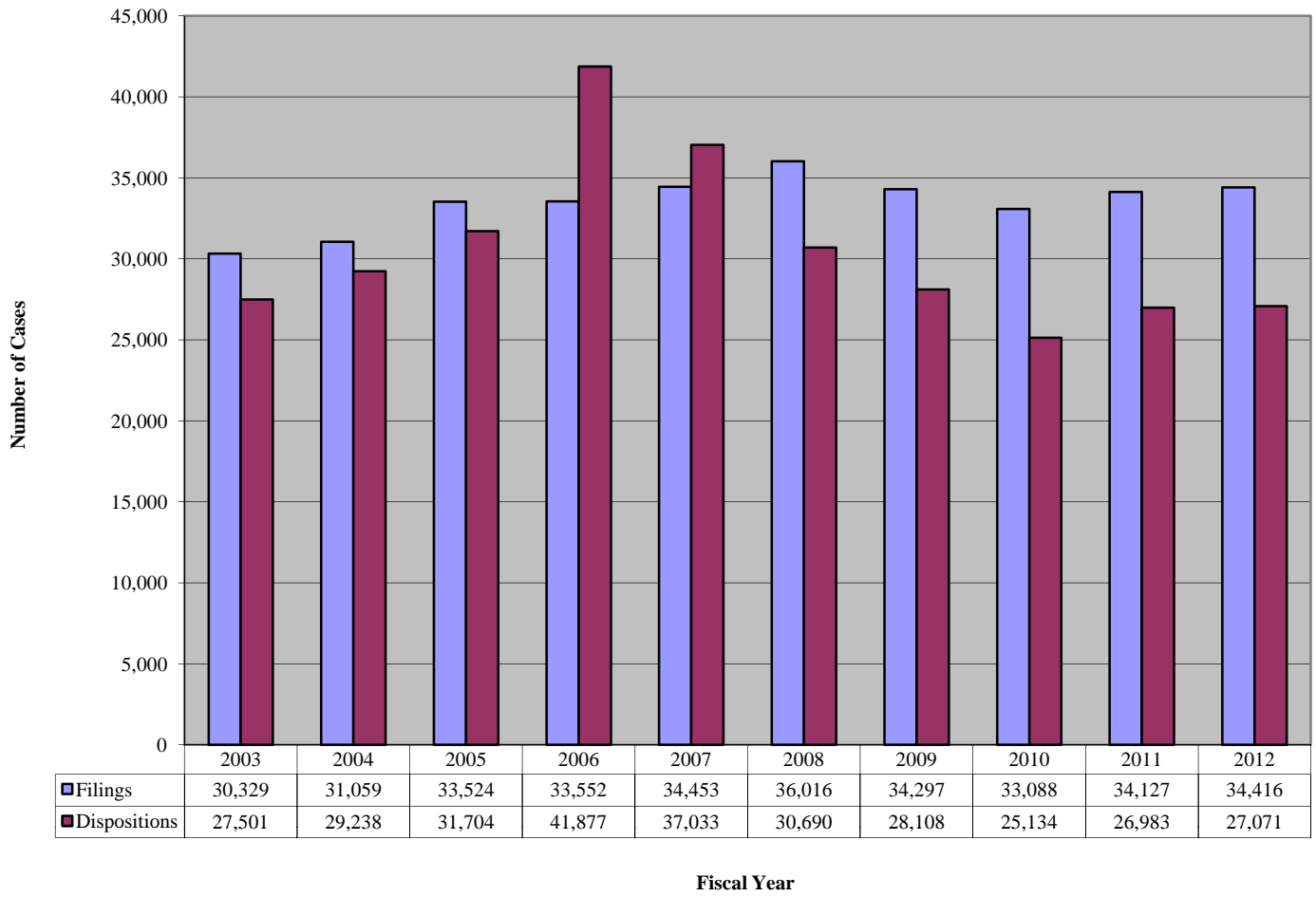
Caseload Summary Fiscal Year 2012 - Civil Cases		
	Filings	Dispositions
New Castle County		
Court 9	2,011	1,526
Court 12	0	0
Court 13	18,142	14,522
Kent County		
Court 16	7,119	5,844
Sussex County		
Court 17	7,144	5,179
Court 19	0	0
State	34,416	27,071

Caseload Comparison - Fiscal Years 2011-2012 - Civil Case Filings				
	2011	2012	Change	% Change
New Castle County				
Court 9	1,926	2,011	85	4.4%
Court 13	18,253	18,142	-111	-0.6%
Kent County				
Court 16	6,751	7,119	368	5.5%
Sussex County				
Court 17	7,197	7,144	-53	-0.7%
State	34,127	34,416	289	0.8%

Caseload Comparison - Fiscal Years 2011-2012 - Civil Case Dispositions				
	2011	2012	Change	% Change
New Castle County				
Court 9	1,187	1,526	339	28.6%
Court 13	16,218	14,522	-1,696	-10.5%
Kent County				
Court 16	5,445	5,844	399	7.3%
Sussex County				
Court 17	4,133	5,179	1,046	25.3%
State	26,983	27,071	88	0.3%

Source: Chief Magistrate's Office, Justice of the Peace Court; Administrative Office of the Courts

JP Court - 10 Year Civil Caseload Trend



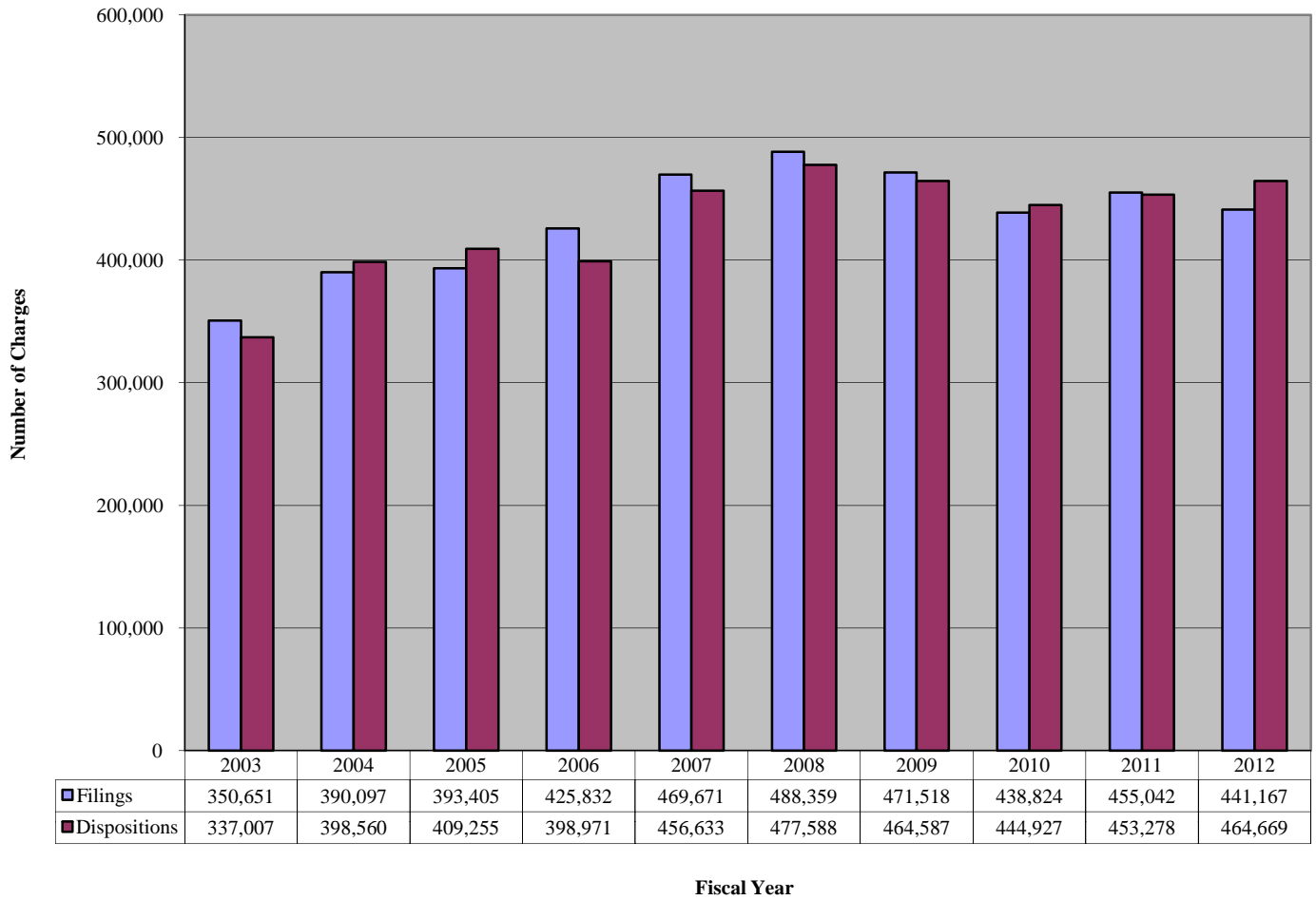
2005 Dispositions Amended

JUSTICE OF THE PEACE COURT

Caseload Breakdowns Fiscal Year 2012 - Civil Case Filings						
	Complaints		Landlord/Tenant		Total	
New Castle County						
Court 9	1,521	75.6%	490	24.4%	2,011	100%
Court 13	5,420	29.9%	12,722	70.1%	18,142	100%
Kent County						
Court 16	3,691	51.8%	3,428	48.2%	7,119	100%
Sussex County						
Court 17	4,216	59.0%	2,928	41.0%	7,144	100%
State	14,848	43.1%	19,568	56.9%	34,416	100%

Source: Chief Magistrate's Office, Justice of the Peace Court; Administrative Office of the Courts

JP Court - 10 Year Criminal and Traffic Caseload Trend



2004 Dispositions Amended

JUSTICE OF THE PEACE COURT

Caseload Breakdowns Fiscal Year 2012 - Criminal and Traffic Filings (defendants)

	Title 7 - Fish/Game		Title 11 - Criminal		Title 21 - Traffic		Miscellaneous		Total	
New Castle County										
Court 9	219	4.8%	184	4.0%	3,987	86.7%	210	4.6%	4,600	100%
Court 10	94	2.4%	163	4.2%	1,574	40.5%	2,058	52.9%	3,889	100%
Court 11	142	0.4%	8,225	22.6%	25,282	69.4%	2,766	7.6%	36,415	100%
Court 20	169	1.0%	3,909	24.0%	9,006	55.3%	3,215	19.7%	16,299	100%
Kent County										
Court 6	51	1.0%	396	7.7%	4,553	88.6%	137	2.7%	5,137	100%
Court 7	159	0.9%	4,596	24.7%	12,268	65.9%	1,602	8.6%	18,625	100%
Court 8	3	0.1%	122	4.5%	2,532	93.5%	52	1.9%	2,709	100%
Sussex County										
Court 1	42	1.5%	157	5.6%	2,102	75.3%	491	17.6%	2,792	100%
Court 2	315	1.8%	9,853	55.3%	6,417	36.0%	1,235	6.9%	17,820	100%
Court 3	440	4.0%	3,604	32.4%	5,613	50.5%	1,453	13.1%	11,110	100%
Court 4	27	0.3%	625	7.5%	7,434	89.1%	255	3.1%	8,341	100%
Court 14	0	0.0%	75	3.2%	2,179	93.5%	76	3.3%	2,330	100%
State without VAC*	1,661	1.3%	31,909	24.5%	82,947	63.8%	13,550	10.4%	130,067	100%
VAC*	462	0.3%	0	0.0%	138,226	99.6%	139	0.1%	138,827	100%
State with VAC*	2,123	0.8%	31,909	11.9%	221,173	82.3%	13,689	5.1%	268,894	100%

* VAC = Voluntary Assessment Center

Note: Court 15 merged with Court 11 in FY2010

Source: Chief Magistrate's Office, Justice of the Peace Court; Administrative Office of the Courts

JUSTICE OF THE PEACE COURT

Caseload Breakdowns Fiscal Year 2012 - Criminal and Traffic Filings (charges)										
	Title 7 - Fish/Game		Title 11 - Criminal		Title 21 - Traffic		Miscellaneous		Total	
New Castle County										
Court 9	313	3.7%	292	3.4%	7,643	89.6%	281	3.3%	8,529	100%
Court 10	104	1.9%	191	3.5%	2,847	52.7%	2,256	41.8%	5,398	100%
Court 11	184	0.2%	17,808	21.4%	59,268	71.2%	6,034	7.2%	83,294	100%
Court 20	190	0.6%	7,601	23.2%	19,638	60.0%	5,312	16.2%	32,741	100%
Kent County										
Court 6	59	0.6%	545	5.4%	9,190	91.6%	234	2.3%	10,028	100%
Court 7	208	0.5%	11,293	28.8%	24,557	62.7%	3,109	7.9%	39,167	100%
Court 8	3	0.0%	200	3.3%	5,855	95.5%	75	1.2%	6,133	100%
Sussex County										
Court 1	71	1.3%	245	4.5%	4,597	84.1%	551	10.1%	5,464	100%
Court 2	374	0.8%	27,023	58.5%	14,626	31.7%	4,134	9.0%	46,157	100%
Court 3	812	2.6%	12,859	41.5%	13,768	44.5%	3,520	11.4%	30,959	100%
Court 4	31	0.2%	1,205	6.8%	15,857	90.1%	508	2.9%	17,601	100%
Court 14	0	0.0%	138	2.3%	5,620	95.4%	130	2.2%	5,888	100%
State without VAC*	2,349	0.8%	79,400	27.3%	183,466	63.0%	26,144	9.0%	291,359	100%
VAC*	462	0.3%	0	0.0%	149,206	99.6%	140	0.1%	149,808	100%
State with VAC*	2,811	0.6%	79,400	18.0%	332,672	75.4%	26,284	6.0%	441,167	100%

* VAC = Voluntary Assessment Center

Note: Court 15 merged with Court 11 in FY2010

Source: Chief Magistrate's Office, Justice of the Peace Court; Administrative Office of the Courts

JUSTICE OF THE PEACE COURT

Caseload Comparison - Fiscal Years 2011-2012 - Criminal and Traffic Filings (defendants)				
	2011	2012	Change	% Change
New Castle County				
Court 9	4,888	4,600	-288	-5.9%
Court 10	5,758	3,889	-1,869	-32.5%
Court 11	34,911	36,415	1,504	4.3%
Court 15**	-	-	-	-
Court 20	16,308	16,299	-9	-0.1%
Kent County				
Court 6	5,114	5,137	23	0.4%
Court 7	19,917	18,625	-1,292	-6.5%
Court 8	2,242	2,709	467	20.8%
Sussex County				
Court 1	2,521	2,792	271	10.7%
Court 2	15,864	17,820	1,956	12.3%
Court 3	10,980	11,110	130	1.2%
Court 4	8,481	8,341	-140	-1.7%
Court 14	2,483	2,330	-153	-6.2%
State without VAC*	129,467	130,067	600	0.5%
VAC*	141,905	138,827	-3,078	-2.2%
State with VAC*	271,372	268,894	-2,478	-0.9%

* VAC = Voluntary Assessment Center

** Court 15 merged with Court 11 in FY2010

Source: Chief Magistrate's Office, Justice of the Peace Court; Administrative Office of the Courts

JUSTICE OF THE PEACE COURT

Caseload Comparison - Fiscal Years 2011-2012 - Criminal and Traffic Filings (charges)				
	2011	2012	Change	Change
New Castle County				
Court 9	9,567	8,529	-1,038	-10.8%
Court 10	10,384	5,398	-4,986	-48.0%
Court 11	83,962	83,294	-668	-0.8%
Court 15**	-	-	-	-
Court 20	34,614	32,741	-1,873	-5.4%
Kent County				
Court 6	9,657	10,028	371	3.8%
Court 7	43,479	39,167	-4,312	-9.9%
Court 8	5,172	6,133	961	18.6%
Sussex County				
Court 1	4,880	5,464	584	12.0%
Court 2	42,789	46,157	3,368	7.9%
Court 3	32,152	30,959	-1,193	-3.7%
Court 4	18,715	17,601	-1,114	-6.0%
Court 14	6,452	5,888	-564	-8.7%
State without VAC*	301,823	291,359	-10,464	-3.5%
VAC*	153,219	149,808	-3,411	-2.2%
State with VAC*	455,042	441,167	-13,875	-3.0%

* VAC = Voluntary Assessment Center

** Court 15 merged with Court 11 in FY2010

Source: Chief Magistrate's Office, Justice of the Peace Court; Administrative Office of the Courts

JUSTICE OF THE PEACE COURT

Court Rankings - Fiscal Year 2011-2012 - Total* Filings (charges)				
Rank w/o VAC	Total Filings		% of Total w/o VAC	
1	Court	11	83,294	25.6%
2	Court	2	46,157	14.2%
3	Court	7	39,167	12.0%
4	Court	20	32,741	10.1%
5	Court	3	30,959	9.5%
6	Court	13	18,142	5.6%
7	Court	4	17,601	5.4%
8	Court	9	10,540	3.2%
9	Court	6	10,028	3.1%
10	Court	17	7,144	2.2%
11	Court	16	7,119	2.2%
12	Court	8	6,133	1.9%
13	Court	14	5,888	1.8%
14	Court	1	5,464	1.7%
15	Court	10	5,398	1.7%
State w/o VAC			325,775	100.0%
VAC			149,808	
State w/ VAC			475,583	

* Includes civil, criminal, and traffic
 VAC = Voluntary Assessment Center

Note: Court 15 merged with Court 11 in FY2010

Source: Chief Magistrate's Office, Justice of the Peace Court; Administrative Office of the Courts

JUSTICE OF THE PEACE COURT

Court Rankings Fiscal Year 2011-2012 - Total Cases Filed (defendants)			
Rank w/o VAC		Total Filings	% of Total w/o VAC
1	Court 11	36,415	22.1%
2	Court 7	18,625	11.3%
3	Court 13	18,142	11.0%
4	Court 20	16,299	9.9%
5	Court 2	17,820	10.8%
6	Court 3	11,110	6.8%
7	Court 4	8,341	5.1%
8	Court 17	7,144	4.3%
9	Court 9	6,611	4.0%
10	Court 16	7,119	4.3%
11	Court 10	3,889	2.4%
12	Court 6	5,137	3.1%
13	Court 1	2,792	1.7%
15	Court 14	2,330	1.4%
14	Court 8	2,709	1.6%
	State w/o VAC*	164,483	100%
	VAC*	138,827	
	State w/ VAC*	303,310	

* VAC = Voluntary Assessment Center

Note: Court 15 merged with Court 11 in FY2010

Source: Chief Magistrate's Office, Justice of the Peace Court; Administrative Office of the Courts

JUSTICE OF THE PEACE COURT

Caseload Comparison - Fiscal Years 2011-2012 - Total Cases Filed (charges)				
	2011	2012	Change	% Change
Criminal & Traffic	455,042	441,167	-13,875	-3.0%
Civil	34,127	34,416	289	0.8%
Total	489,169	475,583	-13,586	-2.8%

Caseload Comparison - Fiscal Years 2011-2012 - Total Cases Disposed (charges)				
	2011	2012	Change	% Change
Criminal & Traffic	453,278	464,669	11,391	2.5%
Civil	26,983	27,071	88	0.3%
Total	480,261	491,740	11,479	2.4%

Source: Chief Magistrate's Office, Justice of the Peace Court; Administrative Office of the Courts

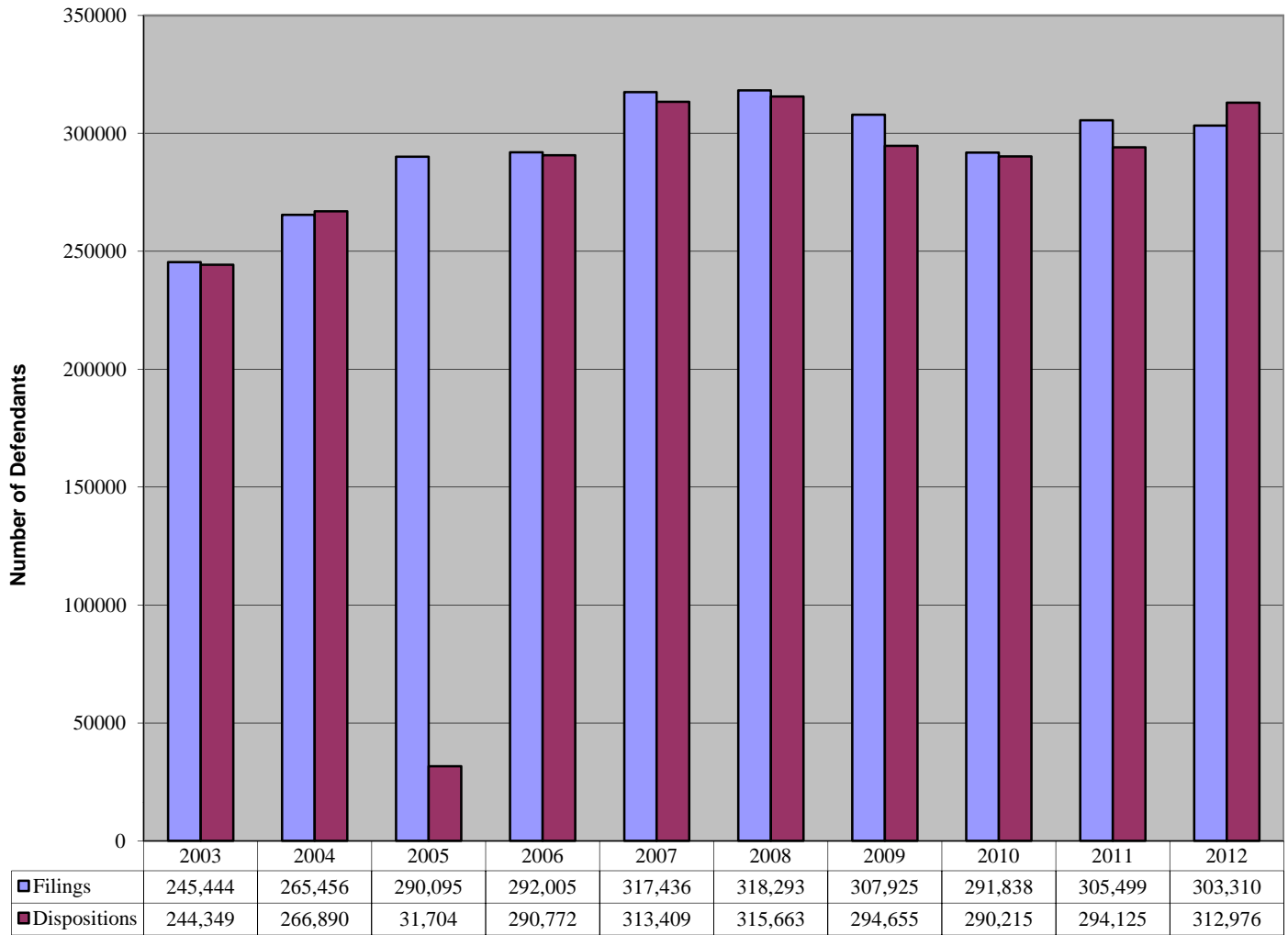
JUSTICE OF THE PEACE COURT

Caseload Comparison - Fiscal Years 2011-2012 - Total Case Filings (defendants)				
	2011	2012	Change	% Change
Criminal & Traffic	271,372	268,894	-2,478	-0.9%
Civil	34,127	34,416	289	0.8%
Total	305,499	303,310	-2,189	-0.7%

Caseload Comparison - Fiscal Years 2011-2012 - Total Case Dispositions (defendants)				
	2011	2012	Change	% Change
Criminal & Traffic	267,142	285,905	18,763	7.0%
Civil	26,983	27,071	88	0.3%
Total	294,125	312,976	18,851	6.4%

Source: Chief Magistrate's Office, Justice of the Peace Court; Administrative Office of the Courts

JP Court - 10 Year Total Caseload Trend (Civil, Criminal & Traffic)



Fiscal Year

Criminal filings and disposition information is by Defendant, which is similar to case information provided by the other courts.

Criminal and Traffic disposition information for 2005 is not available.