



COURT OF COMMON PLEAS  
State of Delaware

2012 Annual Report Statistical Information

**COURT OF COMMON PLEAS**

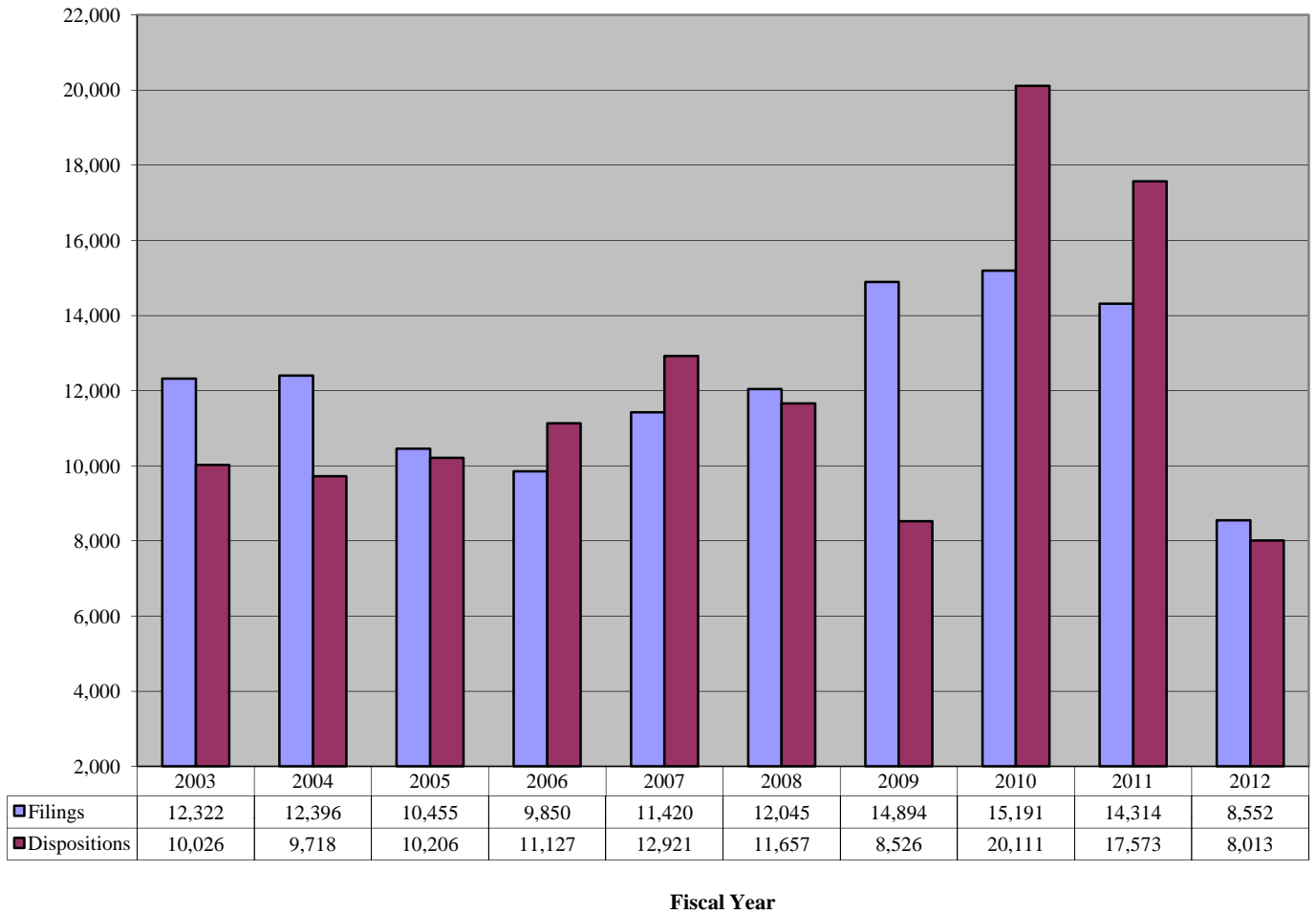
<b>Caseload Summary Fiscal Year 2011-2012 - Civil Case Filings</b>				
	2011	2,012	Change	% Change
New Castle County	8,409	5,218	-3,191	-37.9%
Kent County	2,837	1,548	-1,289	-45.4%
Sussex County	3,068	1,786	-1,282	-41.8%
<b>State</b>	<b>14,314</b>	<b>8,552</b>	<b>-5,762</b>	<b>-40.3%</b>

<b>Caseload Summary Fiscal Year 2011-2012 - Civil Case Dispositions</b>				
	2011	2,012	Change	% Change
New Castle County	10,105	4,340	-5,765	-57.1%
Kent County	3,591	1,560	-2,031	-56.6%
Sussex County	3,877	2,113	-1,764	-45.5%
<b>State</b>	<b>17,573</b>	<b>8,013</b>	<b>-9,560</b>	<b>-54.4%</b>

<b>Caseload Breakdowns Fiscal Year 2012 - Civil Case Filings</b>					
	Complaints		Civil Judgments, Name Changes, Appeals		Total
New Castle County	4,666	89.4%	552	10.6%	5,218
Kent County	1,401	90.5%	147	9.5%	1,548
Sussex County	1,655	92.7%	131	7.3%	1,786
<b>State</b>	<b>7,722</b>	<b>90.3%</b>	<b>830</b>	<b>9.7%</b>	<b>8,552</b>

Source: Court Administrator, Court of Common Pleas; Administrative Office of the Courts

**Court of Common Pleas 10-Year Civil Caseload Trend**



The increase in civil case dispositions was caused by several factors, including implementation of more efficient case processing procedures, attention to Rule 41(e) dismissals, and implementation of an expedited docket for debt collection cases.

## COURT OF COMMON PLEAS

<b>Caseload Summary Fiscal Year 2011-2012 - Criminal Misdemeanor Case Filings*</b>				
	2011	2012	Change	% Change
New Castle County	63,553	58,171	-5,382	-8.5%
Kent County	18,141	20,709	2,568	14.2%
Sussex County	21,245	22,404	1,159	5.5%
<b>State</b>	<b>102,939</b>	<b>101,284</b>	<b>-1,655</b>	<b>-1.6%</b>

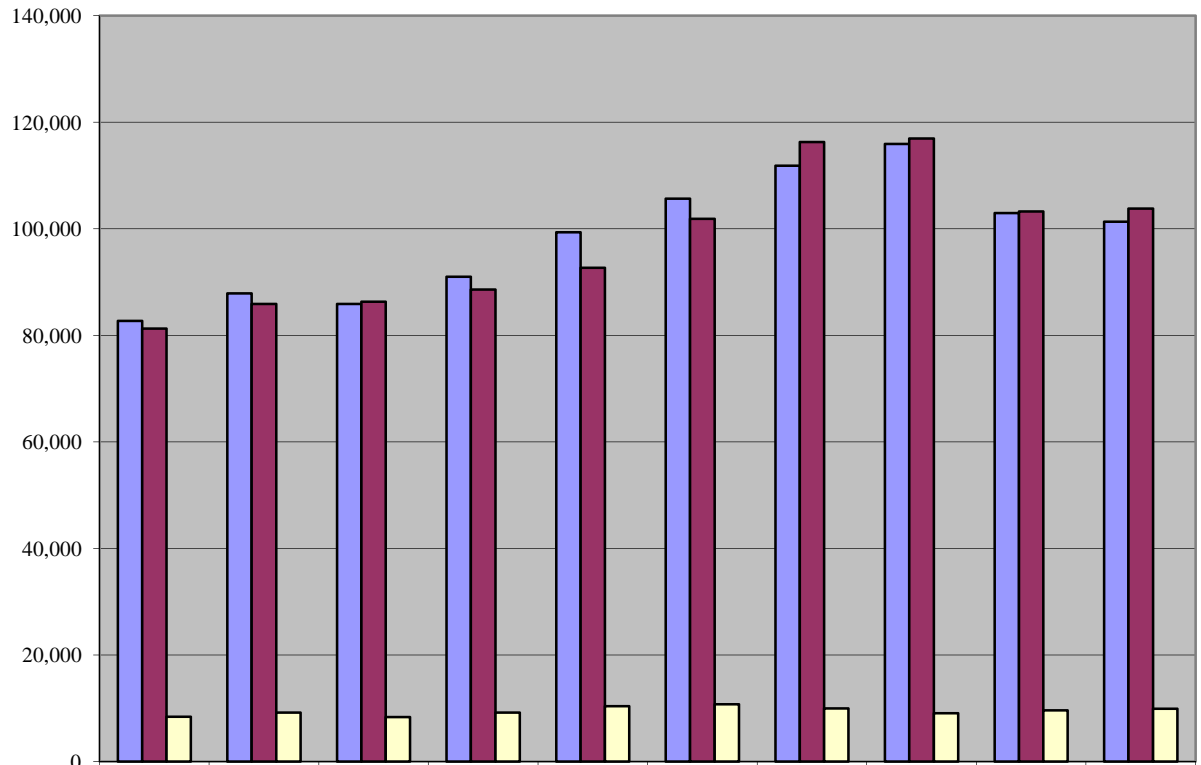
<b>Caseload Summary Fiscal Year 2011-2012 - Criminal Misdemeanor Case Dispositions</b>				
	2011	2012	Change	% Change
New Castle County	65,287	62,035	-3,252	-5.0%
Kent County	16,551	19,354	2,803	16.9%
Sussex County	21,371	22,413	1,042	4.9%
<b>State</b>	<b>103,209</b>	<b>103,802</b>	<b>593</b>	<b>0.6%</b>

<b>Caseload Summary Fiscal Year 2011-2012 - Criminal Preliminary Hearing Case Filings</b>				
	2011	2012	Change	% Change
New Castle County	5,135	5,203	68	1.3%
Kent County	2,238	2,239	1	0.0%
Sussex County	2,217	2,475	258	11.6%
<b>State</b>	<b>9,590</b>	<b>9,917</b>	<b>327</b>	<b>3.4%</b>

\* Includes Contempt of Court cases.

Source: Court Administrator, Court of Common Pleas; Administrative Office of the Courts

**Court of Common Pleas 10-Year Criminal Caseload Trend**



	2003	2004	2005	2006	2007	2008	2009	2010	2011	2012
Misdemeanor Filings	82,719	87,836	85,867	90,964	99,345	105,607	111,797	115,882	102,939	101,284
Misdemeanor Dispositions	81,257	85,893	86,319	88,577	92,691	101,823	116,278	116,926	103,209	103,802
Preliminary Hearings	8,386	9,189	8,329	9,165	10,413	10,720	9,940	9,066	9,590	9,917

**Fiscal Year**

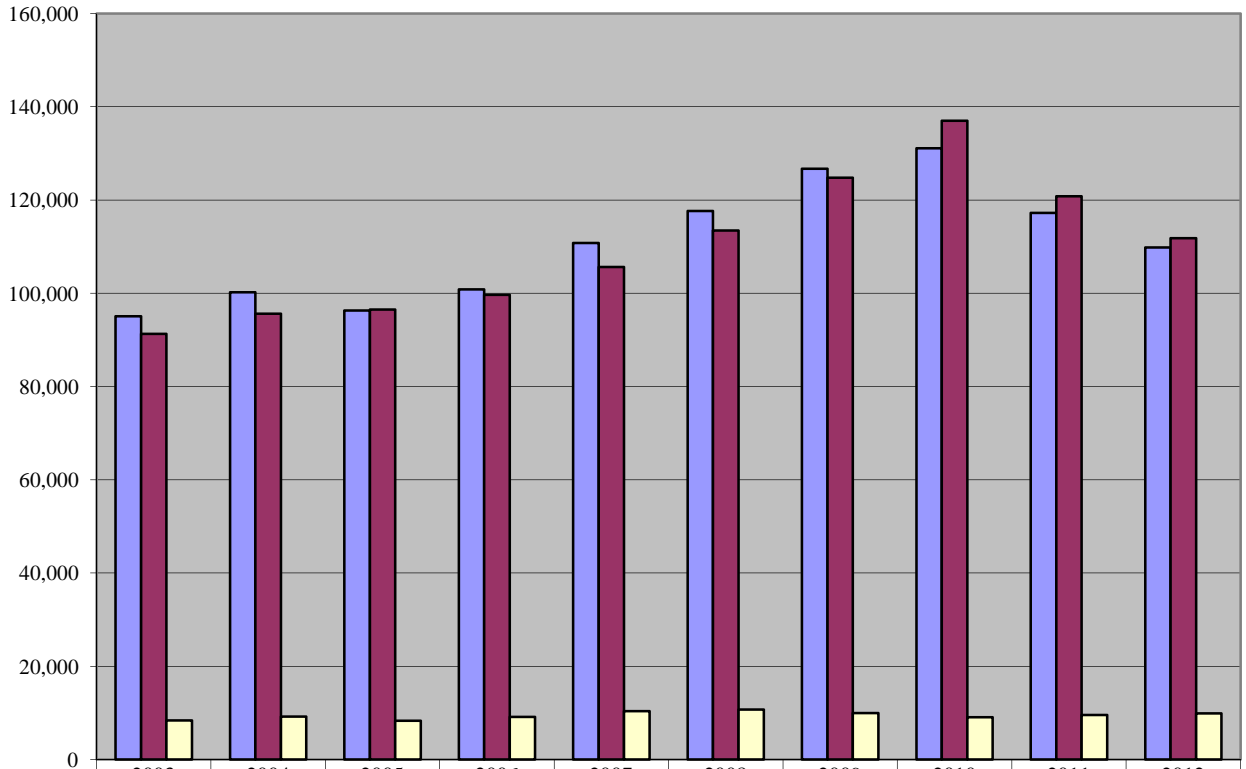
## COURT OF COMMON PLEAS

<b>Caseload Comparison - Fiscal Years 2011-2012 - Total Criminal Misdemeanor and Civil Case Filings</b>				
	2011	2012	Change	% Change
New Castle County	71,962	63,389	-8,573	-11.9%
Kent County	20,978	22,257	1,279	6.1%
Sussex County	24,313	24,190	-123	-0.5%
<b>State</b>	<b>117,253</b>	<b>109,836</b>	<b>-7,417</b>	<b>-6.3%</b>

<b>Caseload Comparison - Fiscal Years 2011-2012 - Total Criminal Misdemeanor and Civil Case Dispositions</b>				
	2011	2012	Change	% Change
New Castle County	75,392	66,375	-9,017	-12.0%
Kent County	20,142	20,914	772	3.8%
Sussex County	25,248	24,526	-722	-2.9%
<b>State</b>	<b>120,782</b>	<b>111,815</b>	<b>-8,967</b>	<b>-7.4%</b>

Source: Court Administrator, Court of Common Pleas; Administrative Office of the Courts

**Court of Common Pleas 10-Year Total Caseload Trend (Civil & Criminal)**



Filings	95,041	100,232	96,322	100,814	110,765	117,652	126,691	131,073	117,253	109,836
Dispositions	91,283	95,611	96,525	99,704	105,612	113,480	124,804	137,037	120,782	111,815
Preliminary Hearings	8,386	9,189	8,329	9,165	10,413	10,720	9,940	9,066	9,590	9,917

**Fiscal Year**